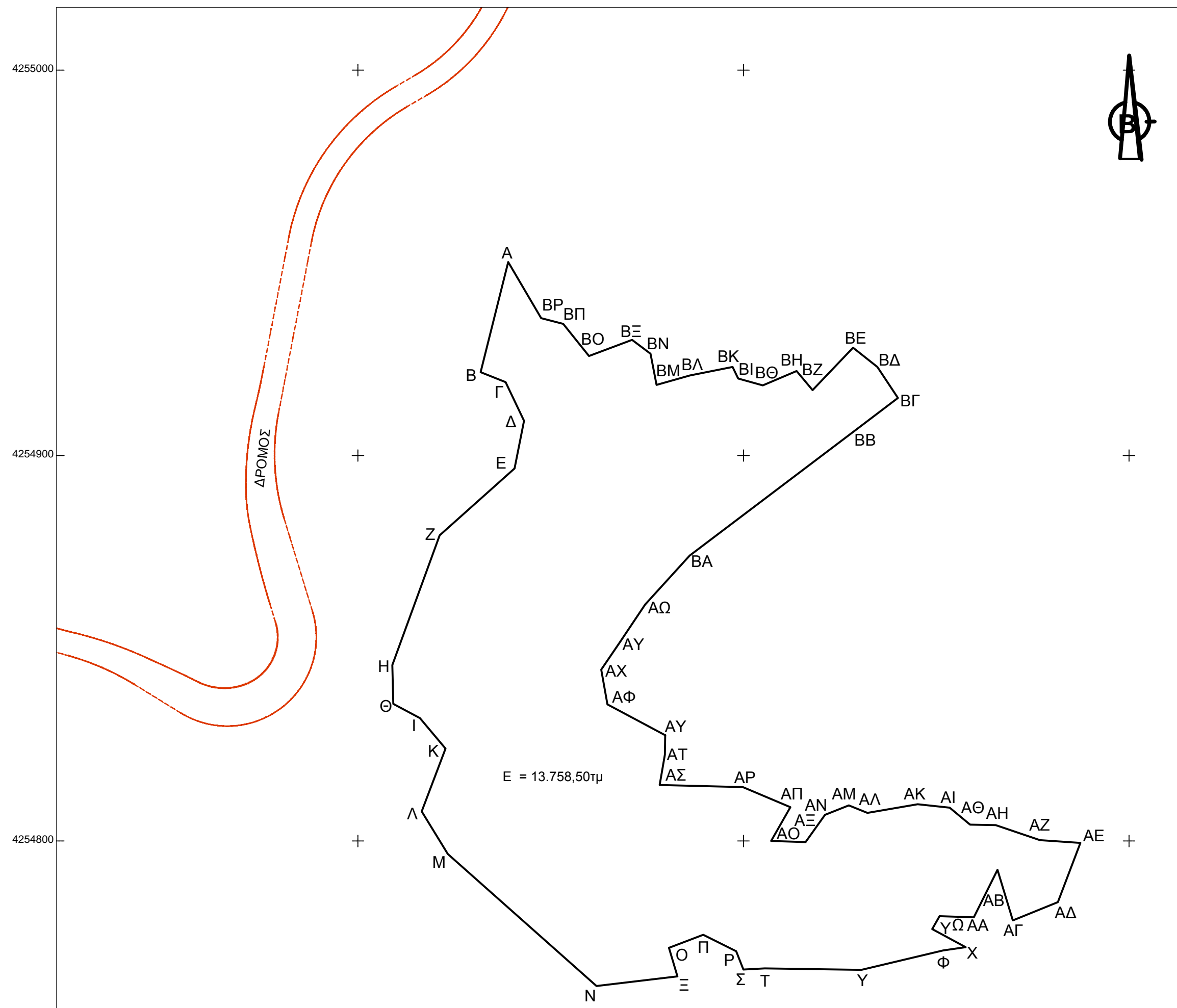


ΜΕ ΑΡΙΘΜΟ 328-25 4

6208 / 5

ΤΟΠΟΓΡΑΦΙΚΟ ΔΙΑΓΡΑΜΜΑ ΣΕ ΚΛΙΜΑΚΑ 1:1000



E (A,B,Γ,Δ,Ε,Ζ,Η,Θ,...,ΒΠ,ΒΡ,Α) = 13.758,50μ

ΠΙΝΑΚΑΣ ΣΥΝΤΕΤΑΓΜΕΝΩΝ ΚΑΤΑ ΕΓΣΑ 87

ΚΟΡΥΦΗ	X	Y
A	329638.96	4254950.16
B	329631.81	4254921.61
Γ	329638.28	4254919.00
Δ	329643.07	4254909.01
E	329640.63	4254896.62
Z	329621.21	4254879.29
H	329608.93	4254845.65
Θ	329609.18	4254835.55
I	329616.07	4254831.85
K	329622.71	4254823.96
Λ	329616.54	4254807.66
M	329623.31	4254796.63
N	329661.88	4254762.37
Ξ	329682.88	4254764.87
O	329680.66	4254772.26
Π	329689.55	4254775.67
P	329698.09	4254771.40
Σ	329699.99	4254766.65
T	329705.51	4254766.95
Y	329730.58	4254766.55
Φ	329751.77	4254771.59
X	329757.61	4254772.46
Υ	329748.96	4254777.12
Ω	329750.84	4254780.47
ΑΑ	329759.73	4254780.18
ΑΒ	329765.86	4254792.49
ΑΓ	329769.86	4254779.38
ΑΔ	329781.53	4254784.11
ΑΕ	329787.36	4254799.51
ΑΖ	329776.88	4254800.22
ΑΗ	329765.42	4254804.10
ΑΘ	329758.76	4254804.22

ΑΙ	329753.46	4254808.62
ΑΚ	329745.17	4254809.51
ΑΛ	329732.13	4254807.26
ΑΜ	329727.31	4254809.22
ΑΝ	329721.14	4254806.79
ΑΞ	329716.11	4254799.68
ΑΟ	329707.16	4254799.98
ΑΠ	329712.17	4254808.77
ΑΡ	329699.84	4254813.95
ΑΣ	329678.26	4254814.53
ΑΤ	329679.59	4254822.37
ΑΥ	329679.68	4254827.43
ΑΦ	329664.69	4254835.42
ΑΧ	329663.09	4254844.45
ΑΥ	329667.95	4254851.61
ΑΩ	329674.48	4254861.34
ΒΑ	329686.04	4254874.04
ΒΒ	329728.46	4254906.10
ΒΓ	329740.06	4254914.90
ΒΔ	329734.71	4254922.96
ΒΕ	329728.41	4254927.95
ΒΖ	329717.91	4254916.94
ΒΗ	329713.75	4254921.92
ΒΘ	329704.99	4254918.18
ΒΙ	329698.63	4254919.97
ΒΚ	329697.15	4254922.96
ΒΛ	329686.14	4254920.76
ΒΜ	329677.43	4254918.31
ΒΝ	329675.88	4254926.39
ΒΞ	329671.09	4254930.00
ΒΟ	329659.91	4254925.80
ΒΠ	329653.24	4254934.12
ΒΡ	329647.53	4254935.63

1: 1.000

ΔΙΑΤΑΞΕΙΣ		Ψ-Ω	3.84
ΚΟΡΥΦΕΣ	ΑΠΟΣΤΑΣΗ	Ω-ΑΑ	8.9
A-B	29.44	ΑΑ-ΑΒ	13.75
B-Γ	6.97	ΑΒ-ΑΓ	13.71
Γ-Δ	11.08	ΑΓ-ΑΔ	12.59
Δ-Ε	12.63	ΑΔ-ΑΕ	16.46
Ε-Ζ	26.03	ΑΕ-ΑΖ	10.51
Ζ-Η	35.81	ΑΖ-ΑΗ	12.09
Η-Θ	10.1	ΑΗ-ΑΘ	6.67
Θ-Ι	7.82	ΑΘ-ΑΙ	6.89
Ι-Κ	10.32	ΑΙ-ΑΚ	8.34
Κ-Λ	17.43	ΑΚ-ΑΛ	13.23
Λ-Μ	12.94	ΑΛ-ΑΜ	5.21
Μ-Ν	51.59	ΑΜ-ΑΝ	6.62
Ν-Ξ	21.15	ΑΝ-ΑΞ	8.71
Ξ-Ο	7.71	ΑΞ-ΑΟ	8.95
Ο-Π	9.52	ΑΟ-ΑΠ	10.12
Π-Ρ	9.55	ΑΠ-ΑΡ	13.37
Ρ-Σ	5.12	ΑΡ-ΑΣ	21.59
Σ-Τ	5.53	ΑΣ-ΑΤ	7.96
Τ-Υ	25.07	ΑΤ-ΑΥ	5.06
Υ-Φ	21.78	ΑΥ-ΑΦ	16.98
Φ-Χ	5.9	ΑΦ-ΑΧ	9.17
17,17	9,83	ΑΧ-ΑΥ	8,66