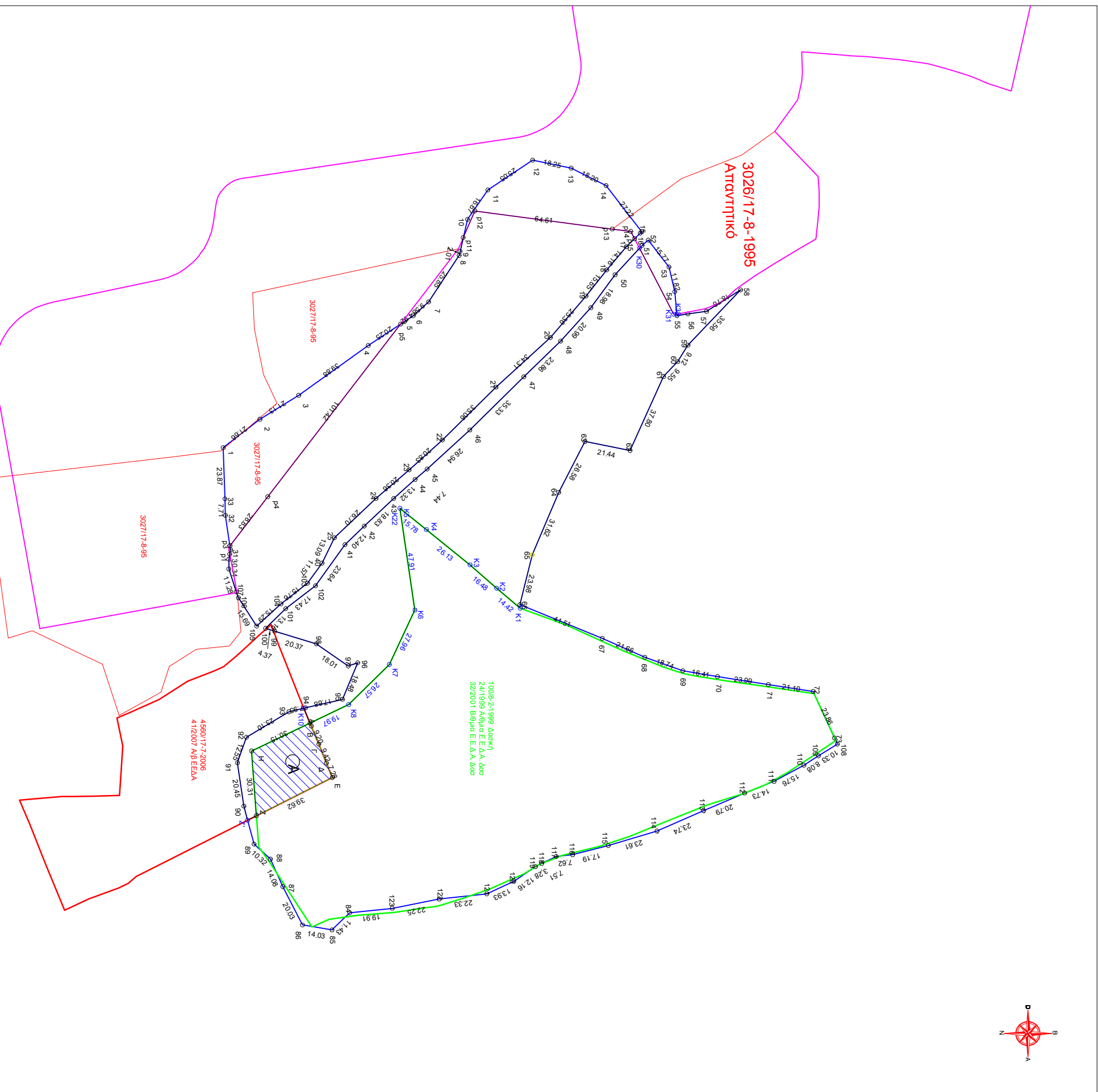


Σχέδιο γαιωπραχίου και Πίνακας Συντεταγμένων των Κορυφών του

Κλίμακα 1:2000



Πίνακας Συντεταγμένων των κορυφών του γεωμετρικού (E)-E2A-87

α/α	X	Y	Αποστάσεις
41	622999.176	390664.171	---
42	622990.804	390662.132	41.-42: 12.40
43	622977.699	390666.847	42.-43: 18.83
44	622988.833	390675.788	43.-44: 13.32
45	622963.979	390681.428	44.-45: 7.44
46	622945.799	390670.313	45.-46: 26.94
47	622920.998	390672.477	46.-47: 35.33
48	622888.813	390674.614	47.-48: 23.86
49	622873.513	390678.900	48.-49: 20.98
50	622859.829	390671.480	49.-50: 18.98
51	622849.829	390679.072	50.-51: 18.58
52	622837.373	390679.124	51.-52: 3.83
53	622819.844	390679.414	52.-53: 15.77
54	622819.844	390679.414	53.-54: 11.82
55	622819.844	390679.414	54.-55: 11.21
56	622819.844	390679.414	55.-56: 5.19
57	622819.844	390679.414	56.-57: 8.77
58	622819.844	390679.414	57.-58: 18.78
59	622819.844	390679.414	58.-59: 35.56
60	622819.844	390679.414	59.-60: 9.12
61	622819.844	390679.414	60.-61: 9.55
62	622819.844	390679.414	61.-62: 37.80
63	622819.844	390679.414	62.-63: 21.44
64	622819.844	390679.414	63.-64: 26.58
65	622819.844	390679.414	64.-65: 31.62
66	622819.844	390679.414	65.-66: 23.98
67	622819.844	390679.414	66.-67: 41.51
68	622819.844	390679.414	67.-68: 21.66
69	622819.844	390679.414	68.-69: 18.74
70	622819.844	390679.414	69.-70: 16.41
71	622819.844	390679.414	70.-71: 23.99
72	622819.844	390679.414	71.-72: 21.10
73	622819.844	390679.414	72.-73: 23.86
74	622819.844	390679.414	73.-74: 108.313
75	622819.844	390679.414	108.-109: 10.33
109	623027.561	390683.580	110.-111: 15.76
110	623027.561	390683.580	111.-112: 14.73
111	623027.561	390683.580	112.-113: 20.79
112	623027.561	390683.580	113.-114: 23.74
113	623027.561	390683.580	114.-115: 23.61
114	623027.561	390683.580	115.-116: 17.19
115	623027.561	390683.580	116.-117: 7.62
116	623027.561	390683.580	117.-118: 7.51
117	623027.561	390683.580	118.-119: 3.28
118	623027.561	390683.580	119.-120: 12.16
119	623027.561	390683.580	120.-121: 13.93
120	623027.561	390683.580	121.-122: 22.33
121	623027.561	390683.580	122.-123: 22.25
122	623027.561	390683.580	123.-124: 19.91
123	623027.561	390683.580	84.-85: 11.43
84	623027.561	390683.580	85.-86: 14.03
85	623027.561	390683.580	86.-87: 20.03
86	623027.561	390683.580	87.-88: 14.08
87	623027.561	390683.580	88.-89: 10.32
88	623027.561	390683.580	89.-90: 18.30
89	623027.561	390683.580	90.-91: 20.37
90	623027.561	390683.580	91.-92: 12.55
91	623027.561	390683.580	92.-93: 23.10
92	623027.561	390683.580	93.-94: 7.95
93	623027.561	390683.580	94.-95: 17.88
94	623027.561	390683.580	95.-96: 18.48
95	623027.561	390683.580	96.-97: 17.62
96	623027.561	390683.580	97.-98: 18.01
97	623027.561	390683.580	98.-99: 20.37
98	623027.561	390683.580	99.-100: 13.16
99	623027.561	390683.580	100.-101: 17.43
100	623027.561	390683.580	101.-102: 17.43
101	623027.561	390683.580	102.-41: 23.64
102	623027.561	390683.580	---
41	622999.176	390664.171	---

Πίνακας Συντεταγμένων των κορυφών του γεωμετρικού (E)-E2A-87-

α/α	X	Y	Αποστάσεις
1	622954.026	390656.467	---
2	622940.746	390660.576	2.-3: 21.13
3	622920.654	390661.566	2.-3: 21.13
4	622905.424	390663.074	3.-4: 39.88
5	622885.248	390667.862	4.-5: 20.25
6	622867.532	390674.955	5.-6: 4.82
7	622848.164	390682.120	6.-7: 9.68
8	622824.542	390686.292	7.-8: 25.65
9	622802.581	390690.746	8.-9: 2.20
10	622784.656	390700.198	9.-10: 15.57
11	622763.953	390709.681	10.-11: 16.67
12	622740.107	390720.557	11.-12: 25.05
13	622713.942	390734.422	12.-13: 18.25
14	622683.942	390754.718	13.-14: 18.25
15	622650.462	390781.385	14.-15: 27.22
16	622614.136	390817.670	15.-16: 16.98
17	622580.436	390874.257	16.-17: 9.88
18	622548.481	390955.558	17.-18: 14.46
19	622513.195	391074.841	18.-19: 15.66
20	622478.675	391234.788	19.-20: 25.38
21	622445.481	391434.811	20.-21: 54.31
22	622414.481	391688.534	21.-22: 38.06
23	622384.401	391997.038	22.-23: 20.83
24	622354.481	392354.718	23.-24: 20.38
25	622324.481	392764.841	24.-25: 28.70
26	622294.481	393234.521	25.-26: 13.09
27	622264.481	393764.841	26.-27: 11.57
28	622234.481	394354.841	27.-28: 15.78
29	622204.481	395004.841	28.-29: 15.29
30	622174.481	395714.841	29.-30: 10.57
31	622144.481	396484.841	30.-31: 11.28
32	622114.481	397314.841	31.-32: 16.45
33	622084.481	398204.841	32.-33: 17.71
34	622054.481	399154.841	33.-123: 8.71

Πίνακας Συντεταγμένων των κορυφών του K1-K2-65-66-K1

α/α	X	Y	Αποστάσεις
K1	623018.873	390672.746	---
K2	623019.517	390671.379	K1.-K2: 14.42
K3	623008.623	390670.412	K2.-K3: 16.48
K4	622992.201	390668.108	K3.-K4: 26.13
K5	622982.324	390668.773	K4.-K5: 15.78
K6	622972.728	390667.732	K5.-K6: 47.91
K7	622965.019	390663.810	K6.-K7: 27.96
K8	622957.674	390664.894	K7.-K8: 26.57
K9	622948.297	390666.878	K8.-A: 19.97
K10	622938.513	390664.003	A.-K10: 7.48
94	622927.240	390664.753	K10.-94: 0.77
95	622917.256	390664.984	94.-95: 17.68
96	622904.437	390662.940	95.-96: 18.48
97	622888.813	390664.622	96.-97: 4.72
98	622873.513	390661.354	97.-98: 18.01
99	622859.829	390661.584	98.-99: 20.37
100	622849.829	390661.584	99.-100: 4.37
101	622837.373	390661.584	100.-101: 13.16
102	622819.844	390661.584	101.-102: 17.43
41	622999.176	390664.171	101.-102: 17.43
42	622988.833	390665.132	41.-42: 12.40
43	622977.699	390666.847	42.-43: 18.83
44	622963.979	390675.788	43.-44: 13.32
45	622945.799	390681.428	44.-45: 7.44
46	622920.998	390672.477	45.-46: 26.94
47	622899.813	390674.614	46.-47: 35.33
48	622873.513	390678.900	47.-48: 23.86
49	622859.829	390671.480	48.-49: 20.98
50	622849.829	390679.072	49.-50: 18.98
51	622837.373	390679.124	50.-51: 18.58
52	622819.844	390679.414	51.-52: 3.83
53	622819.844	390679.414	52.-53: 15.77
54	622819.844	390679.414	53.-54: 11.82
55	622819.844	390679.414	54.-55: 11.21
56	622819.844	390679.414	55.-56: 5.19
57	622819.844	390679.414	56.-57: 8.77
58	622819.844	390679.414	57.-58: 18.78
59	622819.844	390679.414	58.-59: 35.56
60	622819.844	390679.414	59.-60: 9.12
61	622819.844	390679.414	60.-61: 9.55
62	622819.844	390679.414	61.-62: 37.80
63	622819.844	390679.414	62.-63: 21.44
64	622819.844	390679.414	63.-64: 26.58
65	622819.844	390679.414	64.-65: 31.62
66	622819.844	390679.414	65.-66: 23.98
67	622819.844	390679.414	66.-67: 41.51
68	622819.844	390679.414	67.-68: 21.66
69	622819.844	390679.414	68.-69: 18.74
70	622819.844	390679.414	69.-70: 16.41
71	622819.844	390679.414	70.-71: 23.99
72	622819.844	390679.414	71.-72: 21.10
73	622819.844	390679.414	72.-73: 23.86
74	622819.844	390679.414	73.-74: 108.313
109	623027.561	390683.580	108.-109: 10.33
110	623027.561	390683.580	110.-111: 15.76
111	623027.561	390683.580	111.-112: 14.73
112	623027.561	390683.580	112.-113: 20.79
113	623027.561	390683.580	113.-114: 23.74
114	623027.561	390683.580	114.-115: 23.61
115	623027.561	390683.580	115.-116: 17.19
116	623027.561	390683.580	116.-117: 7.62
117	623027.561	390683.580	117.-118: 7.51
118	623027.561	390683.580	118.-119: 3.28
119	623027.561	390683.580	119.-120: 12.16
120	623027.561	390683.580	120.-121: 13.93
121	623027.561	390683.580	121.-122: 22.33
122	623027.561	390683.580	122.-123: 22.25
123	623027.561	390683.580	123.-124: 19.91
84	623027.561	390683.580	84.-85: 11.43
85	623027.561	390683.580	85.-86: 14.03
86	623027.561	390683.580	86.-87: 20.03
87	623027.561	390683.580	87.-88: 14.08
88	623027.561	390683.580	88.-89: 10.32
89	623027.561	390683.580	89.-90: 18.30
90	623027.561	390683.580	90.-91: 20.37
91	623027.561	390683.580	91.-92: 12.55
92	623027.561	390683.580	92.-93: 23.10
93	623027.561	390683.580	93.-94: 7.95
94	623027.561	390683.580	94.-95: 17.88
95	623027.561	390683.580	95.-96: 18.48
96	623027.561	390683.580	96.-97: 17.62
97	623027.561	390683.580	97.-98: 18.01
98	623027.561	390683.580	98.-99: 20.37
99	623027.561	390683.580	99.-100: 13.16
100	623027.561	390683.580	100.-101: 17.43
101	623027.561	390683.580	101.-102: 17.43
102	623027.561	390683.580	102.-41: 23.64
41	622999.176	390664.171	