

Table with 3 columns: A/A, X, Y. Contains data for EMBΛOY Δ1 (A1, B1, B2, ...).

Table with 3 columns: A/A, X, Y. Contains data for EMBΛOY Δ2 (A1, B1, B2, ...).

Table with 3 columns: A/A, X, Y. Contains data for EMBΛOY Δ3 (A1, B1, B2, ...).

Table with 3 columns: A/A, X, Y. Contains data for EMBΛOY Δ4 (A1, B1, B2, ...).

Table with 3 columns: A/A, X, Y. Contains data for EMBΛOY Δ5 (A1, B1, B2, ...).

Table with 3 columns: A/A, X, Y. Contains data for EMBΛOY Δ6 (A1, B1, B2, ...).

Table with 3 columns: A/A, X, Y. Contains data for EMBΛOY Δ7 (A1, B1, B2, ...).

Table with 3 columns: A/A, X, Y. Contains data for EMBΛOY Δ8 (A1, B1, B2, ...).

Table with 3 columns: A/A, X, Y. Contains data for EMBΛOY Δ9 (A1, B1, B2, ...).

Table with 3 columns: A/A, X, Y. Contains data for EMBΛOY Δ10 (A1, B1, B2, ...).

Table with 3 columns: A/A, X, Y. Contains data for EMBΛOY Δ11 (A1, B1, B2, ...).

Table with 3 columns: A/A, X, Y. Contains data for EMBΛOY Δ12 (A1, B1, B2, ...).

Table with 3 columns: A/A, X, Y. Contains data for EMBΛOY Δ13 (A1, B1, B2, ...).

Table with 3 columns: A/A, X, Y. Contains data for EMBΛOY Δ14 (A1, B1, B2, ...).

Table with 3 columns: A/A, X, Y. Contains data for EMBΛOY Δ15 (A1, B1, B2, ...).

Table with 3 columns: A/A, X, Y. Contains data for EMBΛOY Δ16 (A1, B1, B2, ...).

Table with 3 columns: A/A, X, Y. Contains data for EMBΛOY Δ17 (A1, B1, B2, ...).

Table with 3 columns: A/A, X, Y. Contains data for EMBΛOY Δ18 (A1, B1, B2, ...).

Table with 3 columns: A/A, X, Y. Contains data for EMBΛOY Δ19 (A1, B1, B2, ...).

Table with 3 columns: A/A, X, Y. Contains data for EMBΛOY Δ20 (A1, B1, B2, ...).

Table with 3 columns: A/A, X, Y. Contains data for EMBΛOY Δ21 (A1, B1, B2, ...).

Table with 3 columns: A/A, X, Y. Contains data for EMBΛOY Δ22 (A1, B1, B2, ...).

Table with 3 columns: A/A, X, Y. Contains data for EMBΛOY Δ23 (A1, B1, B2, ...).

Table with 3 columns: A/A, X, Y. Contains data for EMBΛOY Δ24 (A1, B1, B2, ...).

Table with 3 columns: A/A, X, Y. Contains data for EMBΛOY Δ25 (A1, B1, B2, ...).

Table with 3 columns: A/A, X, Y. Contains data for EMBΛOY Δ26 (A1, B1, B2, ...).

Table with 3 columns: A/A, X, Y. Contains data for EMBΛOY Δ27 (A1, B1, B2, ...).

Table with 3 columns: A/A, X, Y. Contains data for EMBΛOY Δ28 (A1, B1, B2, ...).

Table with 3 columns: A/A, X, Y. Contains data for EMBΛOY Δ29 (A1, B1, B2, ...).

Table with 3 columns: A/A, X, Y. Contains data for EMBΛOY Δ30 (A1, B1, B2, ...).

Table with 3 columns: A/A, X, Y. Contains data for EMBΛOY Δ31 (A1, B1, B2, ...).

Table with 3 columns: A/A, X, Y. Contains data for EMBΛOY Δ32 (A1, B1, B2, ...).

Table with 3 columns: A/A, X, Y. Contains data for EMBΛOY Δ33 (A1, B1, B2, ...).

Table with 3 columns: A/A, X, Y. Contains data for EMBΛOY Δ34 (A1, B1, B2, ...).

Table with 3 columns: A/A, X, Y. Contains data for EMBΛOY Δ35 (A1, B1, B2, ...).

Table with 3 columns: A/A, X, Y. Contains data for EMBΛOY Δ36 (A1, B1, B2, ...).

Table with 3 columns: A/A, X, Y. Contains data for EMBΛOY Δ37 (A1, B1, B2, ...).

Table with 3 columns: A/A, X, Y. Contains data for EMBΛOY Δ38 (A1, B1, B2, ...).

Table with 3 columns: A/A, X, Y. Contains data for EMBΛOY Δ39 (A1, B1, B2, ...).

Table with 3 columns: A/A, X, Y. Contains data for EMBΛOY Δ40 (A1, B1, B2, ...).

Table with 3 columns: A/A, X, Y. Contains data for EMBΛOY Δ41 (A1, B1, B2, ...).

Table with 3 columns: A/A, X, Y. Contains data for EMBΛOY Δ42 (A1, B1, B2, ...).

Table with 3 columns: A/A, X, Y. Contains data for EMBΛOY Δ43 (A1, B1, B2, ...).

Table with 3 columns: A/A, X, Y. Contains data for EMBΛOY Δ44 (A1, B1, B2, ...).

Table with 3 columns: A/A, X, Y. Contains data for EMBΛOY Δ45 (A1, B1, B2, ...).

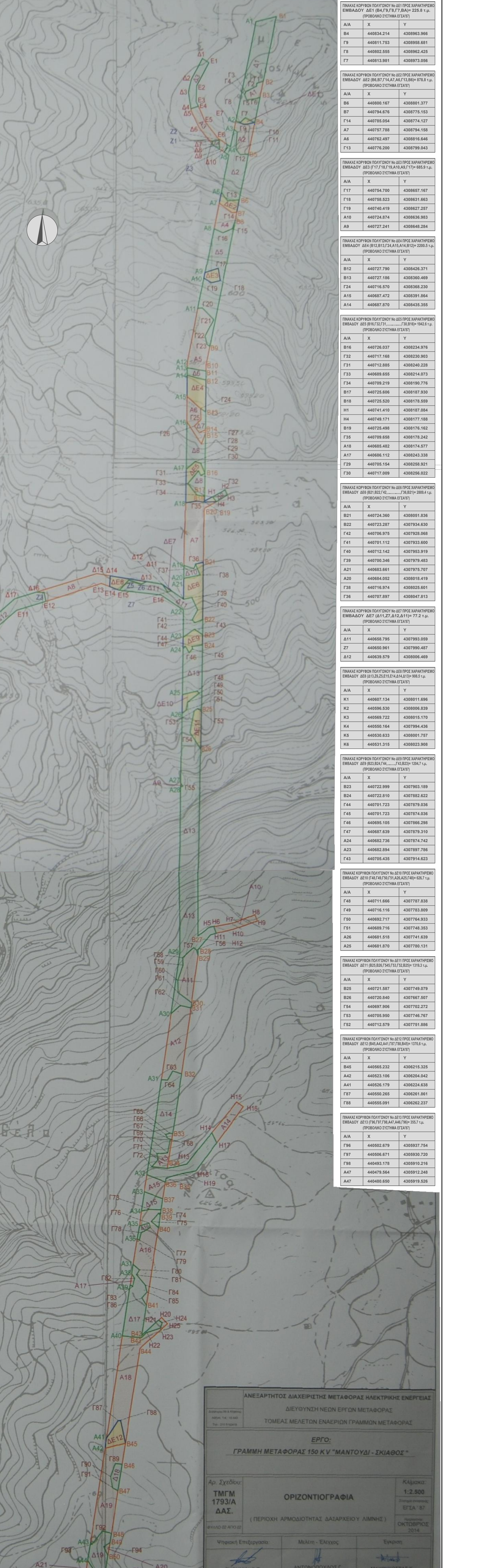
Table with 3 columns: A/A, X, Y. Contains data for EMBΛOY Δ46 (A1, B1, B2, ...).

Table with 3 columns: A/A, X, Y. Contains data for EMBΛOY Δ47 (A1, B1, B2, ...).

Table with 3 columns: A/A, X, Y. Contains data for EMBΛOY Δ48 (A1, B1, B2, ...).

Table with 3 columns: A/A, X, Y. Contains data for EMBΛOY Δ49 (A1, B1, B2, ...).

Table with 3 columns: A/A, X, Y. Contains data for EMBΛOY Δ50 (A1, B1, B2, ...).



Handwritten notes and signatures. Includes 'ΥΠΟΜΟΝΗΜΑ' (Project) and 'ΕΠΙΧΕΙΡΗΣΙΑΚΟ ΠΡΟΓΡΑΜΜΑ' (Operational Program) sections.

Official stamp and title block for the project. Title: 'ΓΡΑΜΜΗ ΜΕΤΑΦΟΡΑΣ 150 KV "ΜΑΝΤΟΥΛΙ - ΣΚΙΑΘΟΣ"'. Includes fields for 'ΕΡΓΟ:', 'ΤΜΓΜ 1933/A ΔΑΣ', and 'ΟΡΙΖΟΝΤΙΟΓΡΑΦΙΑ'.