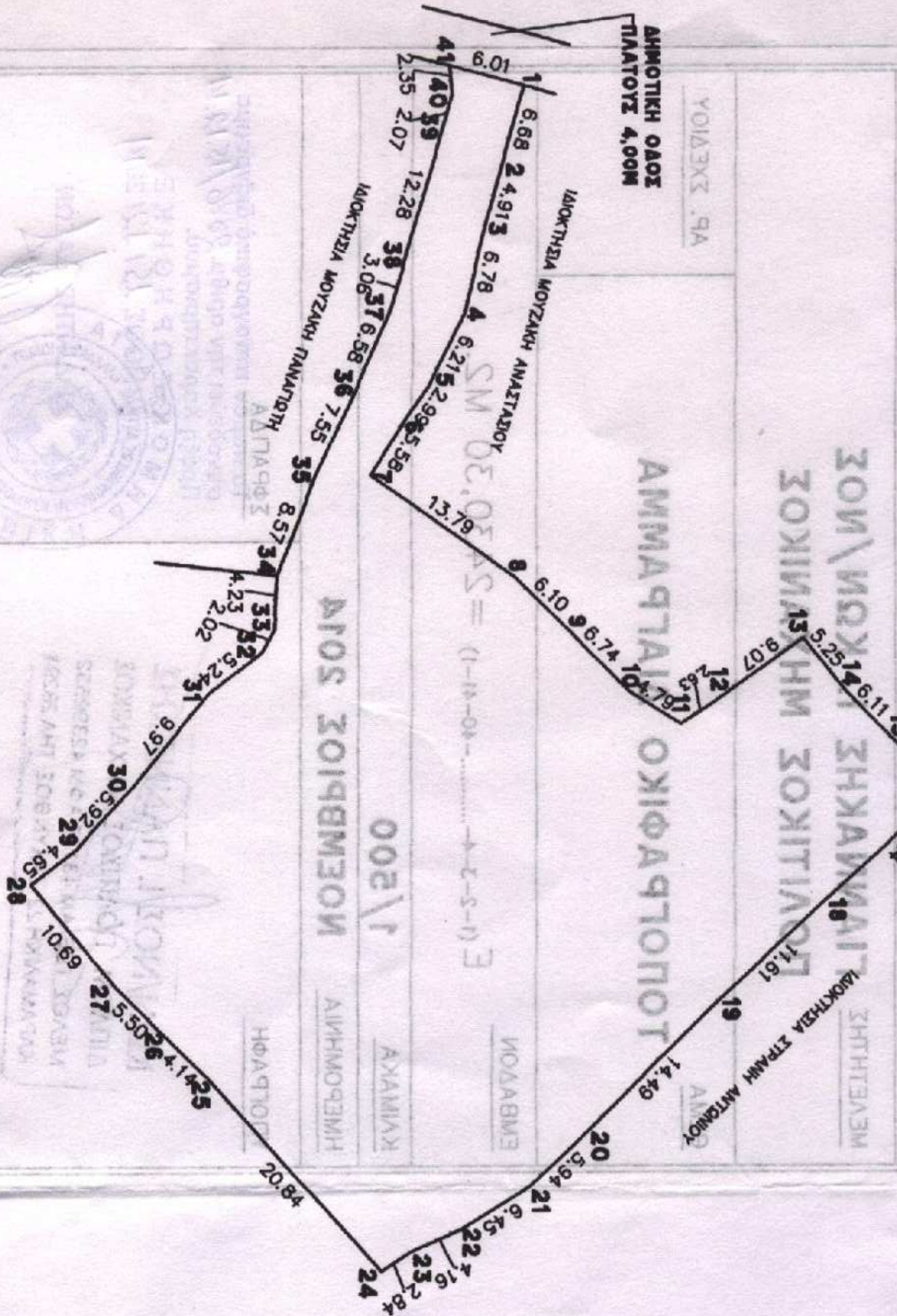


ΕΛΛΗΝΙΚΗ ΔΗΜΟΚΡΑΤΙΑ
ΥΠΟΥΡΓΕΙΟ ΠΑΙΔΕΙΑΣ, ΕΡΕΥΝΑΣ ΚΑΙ ΘΡΗΣΚΕΥΜΑΤΩΝ
ΙΝΣΤΙΤΟΥΤΟ ΤΕΧΝΟΛΟΓΙΑΣ ΥΠΟΛΟΓΙΣΤΩΝ ΚΑΙ ΜΑΘΗΜΑΤΩΝ (ΙΤΥΣΟ)

ΜΕΤΡΗΣΗ ΕΠΙΦΑΝΕΙΑΣ ΚΑΙ ΠΕΡΙΜΕΤΡΟΥ ΠΟΛΥΓΩΝΟΥ ΜΕ ΤΗ ΜΕΘΟΔΟ ΤΩΝ ΣΤΕΡΕΩΜΑΤΩΝ



ΣΗΜΕΙΟ	X	Y	ΜΗΚΟΣ
1	219438.16	4189339.80	6.68
2	219444.59	4189338.01	4.91
3	219449.34	4189336.74	6.78
4	219455.93	4189335.15	6.21
5	219461.53	4189332.44	2.99
6	219463.96	4189330.70	5.58
7	219468.73	4189327.80	13.79
8	219476.74	4189339.03	6.10
9	219481.04	4189343.36	6.74
10	219486.80	4189348.13	4.79
11	219488.37	4189352.17	2.63
12	219486.94	4189354.38	9.07
13	219491.62	4189361.72	5.25
14	219486.73	4189364.99	6.11
15	219490.14	4189369.22	3.01
16	219492.28	4189371.34	2.17
17	219493.82	4189372.86	12.84
18	219502.39	4189363.31	11.61
19	219510.31	4189354.82	14.49
20	219520.47	4189344.49	5.94
21	219524.52	4189340.15	6.45
22	219527.93	4189334.68	4.16
23	219529.64	4189330.89	2.84
24	219531.21	4189328.52	20.84
25	219515.64	4189314.65	4.14
26	219512.73	4189311.71	5.50
27	219506.86	4189307.80	10.69
28	219500.62	4189301.00	4.65
29	219497.78	4189304.68	5.92
30	219493.44	4189308.71	9.97
31	219485.73	4189315.03	5.24
32	219482.50	4189319.16	2.02
33	219480.73	4189320.14	4.23
34	219476.51	4189320.39	8.57
35	219468.53	4189323.52	7.55
36	219461.69	4189326.71	6.58
37	219455.64	4189329.31	3.06
38	219452.72	4189330.20	12.28
39	219440.91	4189333.58	2.07
40	219438.93	4189334.17	2.35
41	219436.59	4189334.00	6.01
1	219438.16	4189339.80	

$E = 1/2 \sum (X_i + X_{i+1})(Y_i - Y_{i+1})$
 $E = 2430.30 \mu^2$

ΕΡΓΟΔΟΤΗΣ

**ΡΕΙΝΤΑΡ ΝΤΑΡΓΟΥΙΝ ΑΙΣΛΑΝΤΣΜΟΕΝ ΜΠΟΗΛΕ
ΛΑΙΛΑ ΚΡΙΣΤΙΝ ΓΟΥΙΛΓΚΟΥΝΣΕΝΤΟΤΙΡ ΜΠΟΗΛΕ**

ΕΡΓΟ

ΘΕΣΗ

**Τ.Κ. ΚΑΤΩ ΓΕΡΑΚΑΡΙ, ΔΗΜ. ΕΝΩΤ. ΑΛΥΚΩΝ
ΔΗΜΟΥ ΖΑΚΥΝΘΟΥ, ΠΕΡ.ΕΝΩΤ. ΙΟΝΙΩΝ ΝΗΣΩΝ
(ΘΕΣΗ.ΑΓΙΑ ΜΑΡΙΝΑ).**

ΜΕΛΕΤΗΤΗΣ

**ΓΙΑΝΝΑΚΗΣ Ι. ΚΩΝ/ΝΟΣ
ΠΟΛΙΤΙΚΟΣ ΜΗΧΑΝΙΚΟΣ**

ΘΕΜΑ

ΤΟΠΟΓΡΑΦΙΚΟ ΔΙΑΓΡΑΜΜΑ

ΑΡ. ΣΧΕΔΙΟΥ

ΣΧΕΔΙΟ ΚΑΤΑΣΤΑΣΗΣ
ΜΟ.Α. ΣΥΝΑΝΤ.

ΕΜΒΑΔΟΝ

$E = (1-2-3-4-.....-40-41-1) = 2430,30 \text{ M}^2.$

ΚΛΙΜΑΚΑ

1/500

ΗΜΕΡΟΜΗΝΙΑ

ΝΟΕΜΒΡΙΟΣ 2014

ΥΠΟΓΡΑΦΗ

ΚΩΝ/ΝΟΣ Ι. ΠΑΝ/ΝΑΚΗΣ
ΔΙΠΛΩΜ. ΠΟΛΙΤΙΚΟΣ ΜΗΧΑΝΙΚΟΣ
ΜΕΛΟΣ ΓΕΩ.ΤΕΧ.ΕΤ. 48185.ΑΦΜ 42392552
ΚΑΡΑΜΑΛΙΧΗ 22 ΖΑΚΥΝΘΟΣ ΤΗΛ 28291

ΣΦΡΑΓΙΔΑ
το παρόν τοπογραφικό διάγραμμα
συνοδεύει την αριθμ. 2886/15.12.14
Πράξη Χαρακτηρισμού.



ΥΠΟΛΟΓΙΣΜΟΣ ΕΜΒΑΔΩΝ

συνολικό μήκος περιμέτρου ναυπηγείου ναυπηγείων ναυπηγείων με τα θωράκια

Ε = 1/5 Σ(Xi + Xi+1)(Yi - Yi+1)

Σ = 40

ΣΤΗΛΗ	Χ	Υ
1	08.0220814	01.2520810
2	10.0220814	02.2520810
3	12.0220814	03.2520810
4	14.0220814	04.2520810
5	16.0220814	05.2520810
6	18.0220814	06.2520810
7	20.0220814	07.2520810
8	22.0220814	08.2520810
9	24.0220814	09.2520810
10	26.0220814	10.2520810
11	28.0220814	11.2520810
12	30.0220814	12.2520810
13	32.0220814	13.2520810
14	34.0220814	14.2520810
15	36.0220814	15.2520810
16	38.0220814	16.2520810
17	40.0220814	17.2520810
18	42.0220814	18.2520810
19	44.0220814	19.2520810
20	46.0220814	20.2520810
21	48.0220814	21.2520810
22	50.0220814	22.2520810
23	52.0220814	23.2520810
24	54.0220814	24.2520810
25	56.0220814	25.2520810
26	58.0220814	26.2520810
27	60.0220814	27.2520810
28	62.0220814	28.2520810
29	64.0220814	29.2520810
30	66.0220814	30.2520810
31	68.0220814	31.2520810
32	70.0220814	32.2520810
33	72.0220814	33.2520810
34	74.0220814	34.2520810
35	76.0220814	35.2520810
36	78.0220814	36.2520810
37	80.0220814	37.2520810
38	82.0220814	38.2520810
39	84.0220814	39.2520810
40	86.0220814	40.2520810
41	88.0220814	41.2520810
42	90.0220814	42.2520810
43	92.0220814	43.2520810
44	94.0220814	44.2520810
45	96.0220814	45.2520810
46	98.0220814	46.2520810
47	100.0220814	47.2520810
48	102.0220814	48.2520810
49	104.0220814	49.2520810
50	106.0220814	50.2520810
51	108.0220814	51.2520810
52	110.0220814	52.2520810
53	112.0220814	53.2520810
54	114.0220814	54.2520810
55	116.0220814	55.2520810
56	118.0220814	56.2520810
57	120.0220814	57.2520810
58	122.0220814	58.2520810
59	124.0220814	59.2520810
60	126.0220814	60.2520810
61	128.0220814	61.2520810
62	130.0220814	62.2520810
63	132.0220814	63.2520810
64	134.0220814	64.2520810
65	136.0220814	65.2520810
66	138.0220814	66.2520810
67	140.0220814	67.2520810
68	142.0220814	68.2520810
69	144.0220814	69.2520810
70	146.0220814	70.2520810
71	148.0220814	71.2520810
72	150.0220814	72.2520810
73	152.0220814	73.2520810
74	154.0220814	74.2520810
75	156.0220814	75.2520810
76	158.0220814	76.2520810
77	160.0220814	77.2520810
78	162.0220814	78.2520810
79	164.0220814	79.2520810
80	166.0220814	80.2520810
81	168.0220814	81.2520810
82	170.0220814	82.2520810
83	172.0220814	83.2520810
84	174.0220814	84.2520810
85	176.0220814	85.2520810
86	178.0220814	86.2520810
87	180.0220814	87.2520810
88	182.0220814	88.2520810
89	184.0220814	89.2520810
90	186.0220814	90.2520810
91	188.0220814	91.2520810
92	190.0220814	92.2520810
93	192.0220814	93.2520810
94	194.0220814	94.2520810
95	196.0220814	95.2520810
96	198.0220814	96.2520810
97	200.0220814	97.2520810
98	202.0220814	98.2520810
99	204.0220814	99.2520810
100	206.0220814	100.2520810