

**ΤΟΠΟΓΡΑΦΙΚΟ ΔΙΑΓΡΑΜΜΑ**  
**ΛΙΤΩΜΕΝΟΥ ΛΑΤΟΜΙΚΟΥ ΧΩΡΟΥ ΜΑΡΜΑΡΩΝ**  
**& ΕΥΡΥΤΕΡΗΣ ΠΕΡΙΟΧΗΣ**

θέση "ΑΓΙΑ ΒΑΡΒΑΡΑ" Δ.Ε. ΛΑΦΥΣΤΙΟΥ, Δήμου ΛΕΒΑΔΕΩΝ,  
Περιφ. Ενδήςιας Βοιωτίας, Περιφέρειας ΣΤΕΡΕΑΣ ΕΛΛΑΔΑΣ

Ιδιοκτήτρια: ΕΛΛΗΝΙΚΟ ΔΗΜΟΣΙΟ  
Μίσθωση - Εκμετάλλευση: ΓΕΩΡΓΙΑ Ε.Π.Ε.

Κλίμακα 1:5.000

ΠΙΝΑΚΑΣ ΣΥΝΤΕΤΑΓΜΕΝΩΝ ΑΙΤΩΜΕΝΟΥ ΧΩΡΟΥ

σημείο	X	Y	X	Y
A	-6.126,00	+18.344,00	403.650,62	4.252.281,92
B	-6.095,00	+18.330,00	403.681,45	4.252.267,58
Γ	-6.123,67	+18.155,07	403.650,83	4.252.083,03
Δ	-6.212,00	+18.155,00	403.662,64	4.252.03,94
E	-6.234,00	+18.154,00	403.540,52	4.252.095,19
Z	-6.267,00	+18.195,00	403.507,55	4.252.095,56
H	-6.272,75	+18.204,25	403.502,35	4.252.143,86
Θ	-6.258,57	+18.230,62	403.496,83	4.252.170,40
Κ	-6.163,00	+18.294,00	403.515,07	4.252.232,35

Κ.Δ.Σ. "ΥΠΕΡΑΣΤΑΣΗ ΠΕΡΙΟΧΗΣ" (Γ.Π.02.000)  
Π.Υ.Π. 19/19.01.2013

Εμβαδόν Χώρου = 20.108,84 μ<sup>2</sup>

**ΒΕΒΑΙΩΣΗ**

Σε απόσταση 250 μ γύρω από το λατομικό χώρο δεν υπάρχουν μετακινούμενα ορόσημα, τοιχοματικές εγκαταστάσεις, σαρύλλια, κρηπίδες, σιδηροδρομικές γραμμές, ενδεδειγμένα υδρομολογικά ορόσημα και άλλα ορόσημα που λαμβάνονται υπόψη για την έκδοση της άδειας. Τίτλοι των ορισμένων και λατομικών χώρων που εμπεριλαμβάνονται στο λατομικό χώρο έχουν την ελάχιστη απόσταση από τον λατομικό χώρο σύμφωνα με τις προδιαγραφές του αρ. 66 του ΚΜΔΕ.

ΑΘΗΝΑ ΝΟΕΜΒΡΙΟΣ 2013  
Ο Συντάκτης

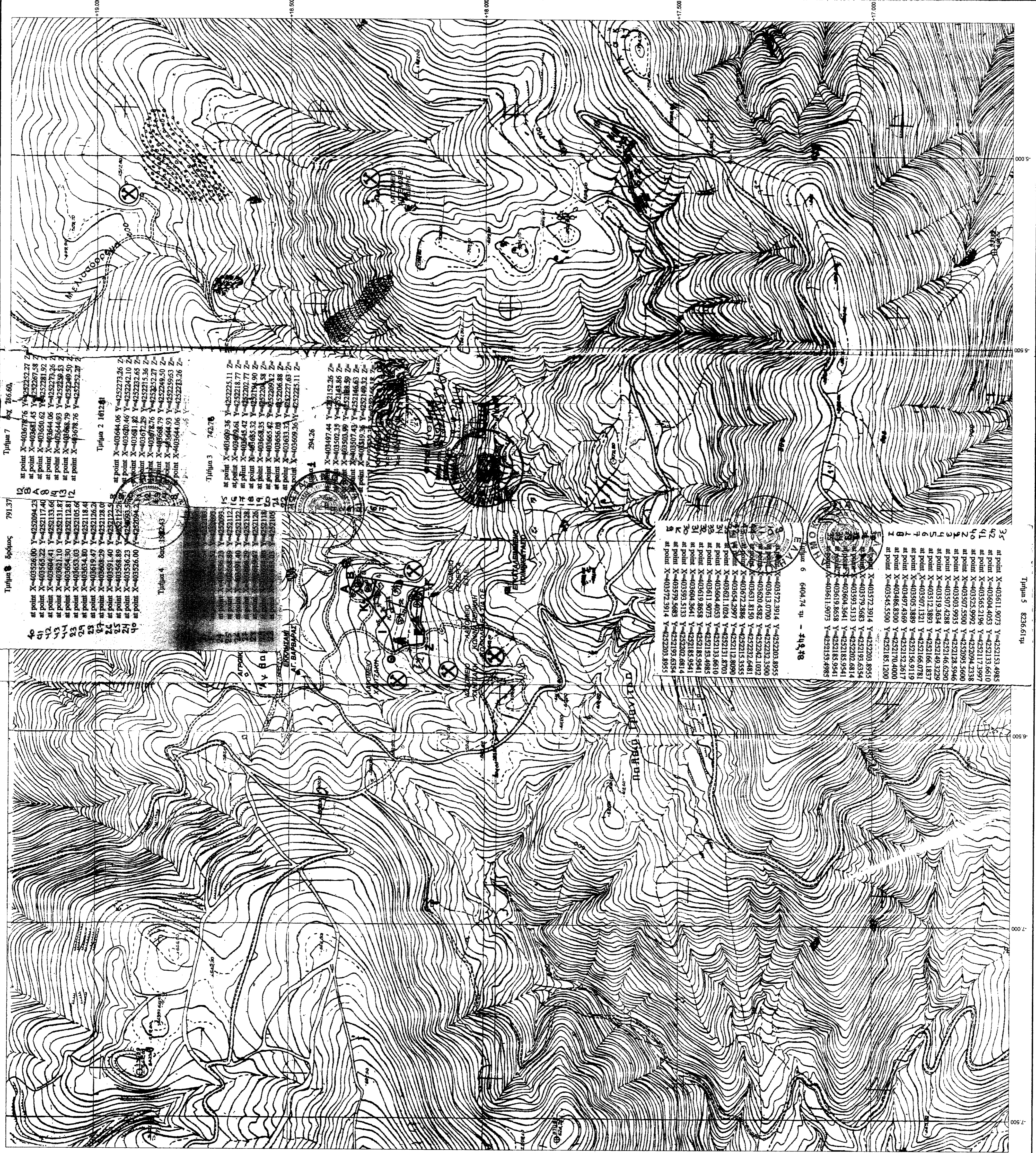
**ΜΑΝΗΣ ΙΩΑΝΝ. ΝΙΚΟΛΑΟΣ**  
ΔΙΠΛΩΜΑΤΟΥΧΟΣ ΓΕΩΓΡΑΦΟΣ ΜΗΧΑΝΙΚΟΣ  
ΕΞΕΛΙΚΤΙΚΟ ΜΕΤΡΩΝ ΓΕΩΓΡΑΦΙΚΗΣ  
ΜΕΛΟΣ Τ.Ε.Ε. ΓΕΩΓΡΑΦΩΝ ΜΗΤΡΩΟΥ 87786  
Α. ΠΑΡΑΡΤΗΜΑΤΟΣ Α.Υ.Π. (Π.Π.Α.Α. - Π.Α.Π.Α.Α.Α.Α.)  
ΑΔΜΗ: 139405129 - ΔΟΥ Κ. ΑΘΗΝΩΝ

**ΥΠΟΜΝΗΜΑ**

- όρια αποβλήτων λατομικού χώρου
- όρια γειτονικών λατομικών χώρων
- κρήνες, δοχεία, χαλαροδοχείο
- λατομικές εγκαταστάσεις
- ορόσημα σύμφωνα με προδιαγραφές αποβλήτων χώρου



ΑΕΡΟΦΩΤΟΓΡΑΦΙΑ ΧΑΡΤΗ Γ.Υ.Σ. "ΛΕΒΑΔΕΙΑ" ΚΛΙΜΑΚΑΣ 1 : 80.000



Τμήμα 7 786,60

at point X=403678,76 Y=4252252,27 Z=...  
at point X=403681,45 Y=4252267,58 Z=...  
at point X=403690,02 Y=4252281,92 Z=...  
at point X=403694,06 Y=4252292,36 Z=...  
at point X=403698,79 Y=4252304,57 Z=...  
at point X=403698,76 Y=4252325,27 Z=...

Τμήμα 2 1812,81

at point X=403644,06 Y=4252273,26 Z=...  
at point X=403640,46 Y=4252242,10 Z=...  
at point X=403681,82 Y=4252232,65 Z=...  
at point X=403672,39 Y=4252215,36 Z=...  
at point X=403678,76 Y=4252232,27 Z=...  
at point X=403668,79 Y=4252249,50 Z=...  
at point X=403644,06 Y=4252259,63 Z=...  
at point X=403644,06 Y=4252223,26 Z=...

Τμήμα 3 742,78

at point X=403609,36 Y=4252223,11 Z=...  
at point X=403696,61 Y=4252218,77 Z=...  
at point X=403645,43 Y=4252202,77 Z=...  
at point X=403683,32 Y=4252204,58 Z=...  
at point X=403668,83 Y=4252209,13 Z=...  
at point X=403665,42 Y=4252208,88 Z=...  
at point X=403631,31 Y=4252227,63 Z=...  
at point X=403609,36 Y=4252225,11 Z=...

Τμήμα 4 294,26

at point X=403497,44 Y=4252152,26 Z=...  
at point X=403502,35 Y=4252148,46 Z=...  
at point X=403503,49 Y=4252188,59 Z=...  
at point X=403507,43 Y=4252196,63 Z=...  
at point X=403510,43 Y=4252198,63 Z=...

Τμήμα 5 8236,61 μ<sup>2</sup>

at point X=403611,9073 Y=4252133,4985 Z=...  
at point X=403604,4033 Y=4252133,6610 Z=...  
at point X=403652,2196 Y=4252117,1997 Z=...  
at point X=403525,9992 Y=4252094,2338 Z=...  
at point X=403507,5500 Y=4252095,5600 Z=...  
at point X=403503,9935 Y=4252128,5946 Z=...  
at point X=403507,4288 Y=4252146,6250 Z=...  
at point X=403519,3634 Y=4252166,6250 Z=...  
at point X=403512,3893 Y=4252166,6250 Z=...  
at point X=403505,3889 Y=4252166,6250 Z=...  
at point X=403507,1321 Y=4252166,6250 Z=...  
at point X=403512,3893 Y=4252166,6250 Z=...  
at point X=403507,4389 Y=4252166,6250 Z=...  
at point X=403507,4389 Y=4252166,6250 Z=...  
at point X=403507,4389 Y=4252166,6250 Z=...  
at point X=403507,4389 Y=4252166,6250 Z=...  
at point X=403507,4389 Y=4252166,6250 Z=...

Τμήμα 6 6404,74 μ<sup>2</sup> - 419,48

at point X=403572,3914 Y=4252203,8935 Z=...  
at point X=403579,5683 Y=4252193,6334 Z=...  
at point X=403593,5133 Y=4252202,6814 Z=...  
at point X=403604,5641 Y=4252185,9544 Z=...  
at point X=403611,5073 Y=4252185,9544 Z=...  
at point X=403545,5500 Y=4252185,1200 Z=...  
at point X=403572,3914 Y=4252203,8935 Z=...  
at point X=403612,0700 Y=4252232,3360 Z=...  
at point X=403620,4382 Y=4252242,1032 Z=...  
at point X=403631,8150 Y=4252232,6481 Z=...  
at point X=403672,2386 Y=4252215,5355 Z=...  
at point X=403654,2997 Y=4252212,8090 Z=...  
at point X=403621,1024 Y=4252213,6610 Z=...  
at point X=403604,4033 Y=4252213,6610 Z=...  
at point X=403611,9073 Y=4252213,6610 Z=...  
at point X=403619,8658 Y=4252183,4983 Z=...  
at point X=403604,5641 Y=4252183,4983 Z=...  
at point X=403593,5133 Y=4252202,6814 Z=...  
at point X=403572,3914 Y=4252193,6334 Z=...  
at point X=403572,3914 Y=4252203,8935 Z=...

Τμήμα 7 791,37

at point X=403506,00 Y=4252094,23 Z=...  
at point X=403545,22 Y=4252117,40 Z=...  
at point X=403604,41 Y=4252133,66 Z=...  
at point X=403621,10 Y=4252131,87 Z=...  
at point X=403645,50 Y=4252112,81 Z=...  
at point X=403653,03 Y=4252112,81 Z=...  
at point X=403654,80 Y=4252118,44 Z=...  
at point X=403619,47 Y=4252122,5 Z=...  
at point X=403608,29 Y=4252128,0 Z=...  
at point X=403591,40 Y=4252122,5 Z=...  
at point X=403568,89 Y=4252112,81 Z=...  
at point X=403536,23 Y=4252093,5 Z=...  
at point X=403526,00 Z=...

Τμήμα 8 1382,43

at point X=403506,00 Y=4252094,23 Z=...  
at point X=403545,22 Y=4252117,40 Z=...  
at point X=403604,41 Y=4252133,66 Z=...  
at point X=403621,10 Y=4252131,87 Z=...  
at point X=403645,50 Y=4252112,81 Z=...  
at point X=403653,03 Y=4252112,81 Z=...  
at point X=403654,80 Y=4252118,44 Z=...  
at point X=403619,47 Y=4252122,5 Z=...  
at point X=403608,29 Y=4252128,0 Z=...  
at point X=403591,40 Y=4252122,5 Z=...  
at point X=403568,89 Y=4252112,81 Z=...  
at point X=403536,23 Y=4252093,5 Z=...  
at point X=403526,00 Z=...

Τμήμα 9 791,37

at point X=403506,00 Y=4252094,23 Z=...  
at point X=403545,22 Y=4252117,40 Z=...  
at point X=403604,41 Y=4252133,66 Z=...  
at point X=403621,10 Y=4252131,87 Z=...  
at point X=403645,50 Y=4252112,81 Z=...  
at point X=403653,03 Y=4252112,81 Z=...  
at point X=403654,80 Y=4252118,44 Z=...  
at point X=403619,47 Y=4252122,5 Z=...  
at point X=403608,29 Y=4252128,0 Z=...  
at point X=403591,40 Y=4252122,5 Z=...  
at point X=403568,89 Y=4252112,81 Z=...  
at point X=403536,23 Y=4252093,5 Z=...  
at point X=403526,00 Z=...

Τμήμα 10 1382,43

at point X=403506,00 Y=4252094,23 Z=...  
at point X=403545,22 Y=4252117,40 Z=...  
at point X=403604,41 Y=4252133,66 Z=...  
at point X=403621,10 Y=4252131,87 Z=...  
at point X=403645,50 Y=4252112,81 Z=...  
at point X=403653,03 Y=4252112,81 Z=...  
at point X=403654,80 Y=4252118,44 Z=...  
at point X=403619,47 Y=4252122,5 Z=...  
at point X=403608,29 Y=4252128,0 Z=...  
at point X=403591,40 Y=4252122,5 Z=...  
at point X=403568,89 Y=4252112,81 Z=...  
at point X=403536,23 Y=4252093,5 Z=...  
at point X=403526,00 Z=...

Τμήμα 11 791,37

at point X=403506,00 Y=4252094,23 Z=...  
at point X=403545,22 Y=4252117,40 Z=...  
at point X=403604,41 Y=4252133,66 Z=...  
at point X=403621,10 Y=4252131,87 Z=...  
at point X=403645,50 Y=4252112,81 Z=...  
at point X=403653,03 Y=4252112,81 Z=...  
at point X=403654,80 Y=4252118,44 Z=...  
at point X=403619,47 Y=4252122,5 Z=...  
at point X=403608,29 Y=4252128,0 Z=...  
at point X=403591,40 Y=4252122,5 Z=...  
at point X=403568,89 Y=4252112,81 Z=...  
at point X=403536,23 Y=4252093,5 Z=...  
at point X=403526,00 Z=...

Τμήμα 12 1382,43

at point X=403506,00 Y=4252094,23 Z=...  
at point X=403545,22 Y=4252117,40 Z=...  
at point X=403604,41 Y=4252133,66 Z=...  
at point X=403621,10 Y=4252131,87 Z=...  
at point X=403645,50 Y=4252112,81 Z=...  
at point X=403653,03 Y=4252112,81 Z=...  
at point X=403654,80 Y=4252118,44 Z=...  
at point X=403619,47 Y=4252122,5 Z=...  
at point X=403608,29 Y=4252128,0 Z=...  
at point X=403591,40 Y=4252122,5 Z=...  
at point X=403568,89 Y=4252112,81 Z=...  
at point X=403536,23 Y=4252093,5 Z=...  
at point X=403526,00 Z=...