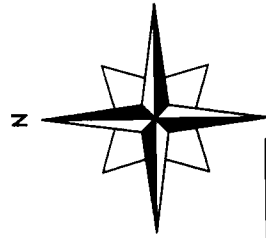
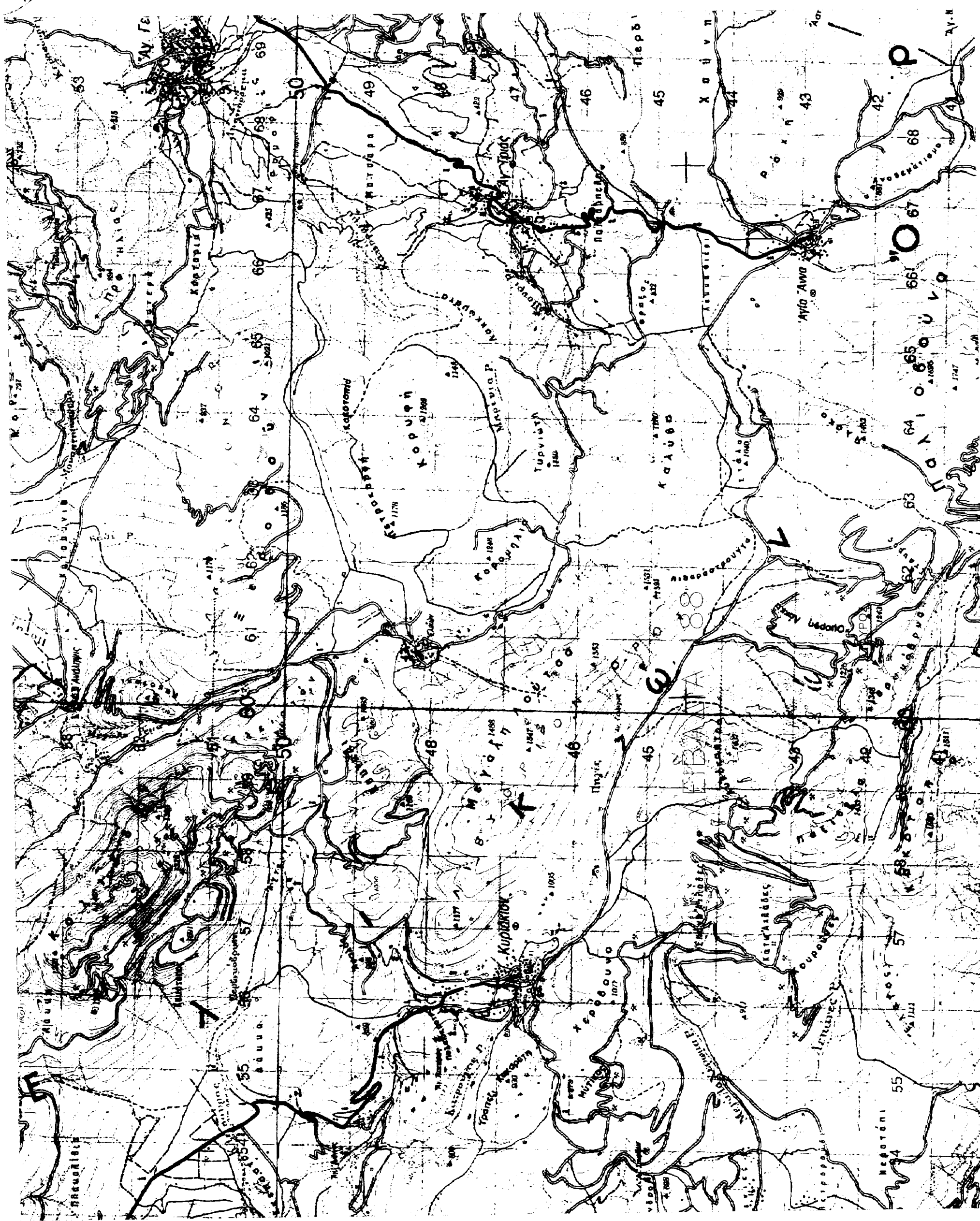


ΦΥΛΟ ΧΑΡΤΗ Γ.Υ.Σ. 6316/7 ΚΛΙΜΑΚΑ 1:5.000  
ΟΡΘΟΦΩΤΟΧΑΡΤΗ 396-239 ΚΛΙΜΑΚΑ 1:5.000



ΟΔΟΠΟΡΙΚΟ ΚΛΙΜΑΚΑ 1:50.000  
ΦΥΛΟ ΧΑΡΤΟΥ 188 ΛΙΒΑΔΕΙΑ



Κορυφές	ΨΗΣΤΑΜΕΝΟΣ ΔΡΟΜΟΣ			γ
	X	Y	πλευρές	
1	399444.3	4239495.0	9.31	
2	399448.6	4239486.8	25.46	
3	399428.8	4239502.8	20.47	
4	399412.5	4239515.2	19.77	
5	399396.6	4239526.9	36.78	
6	399370.3	4239552.6	25.45	
7	399355.6	4239573.4	54.87	
8	399315.6	4239610.9	73.38	
9	399263.6	4239662.6	27.80	
10	399242.9	4239681.2	45.54	
11	399204.0	4239705.0	37.40	
12	399179.6	4239733.3	21.84	
13	399162.1	4239746.4	20.51	
14	399145.5	4239758.4	33.68	
15	399116.3	4239775.2	39.73	
16	399079.5	4239805.0	31.83	
	14.8	4239830.0	20.54	
	25.2	4239847.6	21.38	
	14.6	4239864.6	23.09	
	25.0	4239880.6	20.66	
	25.0	4239900.6	8.18	
	24.6	4239907.2	16.70	
	24.6	4239917.9	13.12	
	24.6	4239879.0	21.24	
	24.6	4239864.7	15.39	
	24.6	4239853.3	21.98	
	24.6	4239834.4	19.75	
	24.6	4239817.8	32.23	
	24.6	4239802.9	49.94	
	24.6	4239786.5	66.17	
	24.6	4239767.6	16.18	
	24.6	4239737.2	20.54	
	24.6	4239722.0	22.32	
	24.6	4239705.9	13.23	
	24.6	4239699.6	25.82	
	24.6	4239686.0	23.52	
	24.6	4239671.4	46.83	
	24.6	4239637.7	51.43	
	24.6	4239600.7	41.06	
	24.6	4239573.9	22.20	
	24.6	4239555.2	32.05	
	24.6	4239533.0	28.30	
	24.6	4239514.6	31.00	

ΤΜΗΜΑ 1 384452.08 25.2  
 Α Χ=399014.5885 Υ=4239855.0012 ΔΔ.6  
 Β Χ=399014.5885 Υ=4239847.6233 ΔΔ.6  
 Γ Χ=399023.2197 Υ=4239830.0486 ΔΔ.6  
 Δ Χ=399044.8412 Υ=4239804.9921 ΔΔ.6  
 Ε Χ=399079.5041 Υ=4239790.1313 ΔΔ.6  
 ΣΤ Χ=399116.3249 Υ=4239775.1997 ΔΔ.6  
 Ζ Χ=399145.5288 Υ=4239758.4416 ΔΔ.6  
 Η Χ=399179.6299 Υ=4239746.4299 ΔΔ.6  
 Θ Χ=399204.0299 Υ=4239733.3299 ΔΔ.6  
 Ι Χ=399242.9299 Υ=4239722.0299 ΔΔ.6  
 Κ Χ=399263.6299 Υ=4239705.0299 ΔΔ.6  
 Λ Χ=399284.9299 Υ=4239681.2299 ΔΔ.6  
 Μ Χ=399315.6299 Υ=4239662.6299 ΔΔ.6  
 Ν Χ=399355.6299 Υ=4239643.4299 ΔΔ.6  
 Ξ Χ=399370.3299 Υ=4239626.9299 ΔΔ.6  
 Ο Χ=399396.6299 Υ=4239610.9299 ΔΔ.6  
 Π Χ=399412.5299 Υ=4239595.2299 ΔΔ.6  
 Ρ Χ=399428.8299 Υ=4239580.8299 ΔΔ.6  
 Σ Χ=399448.6299 Υ=4239565.4299 ΔΔ.6  
 Τ Χ=399464.8299 Υ=4239550.0299 ΔΔ.6  
 Υ Χ=399481.0299 Υ=4239534.6299 ΔΔ.6  
 Φ Χ=399497.2299 Υ=4239519.2299 ΔΔ.6  
 Χ Χ=399513.4299 Υ=4239503.8299 ΔΔ.6  
 Ψ Χ=399529.6299 Υ=4239488.0299 ΔΔ.6  
 Ω Χ=399545.8299 Υ=4239472.2299 ΔΔ.6  
 Ω Χ=399562.0299 Υ=4239456.4299 ΔΔ.6  
 Ω Χ=399578.2299 Υ=4239440.8299 ΔΔ.6  
 Ω Χ=399594.4299 Υ=4239425.2299 ΔΔ.6  
 Ω Χ=399610.6299 Υ=4239409.6299 ΔΔ.6  
 Ω Χ=399626.8299 Υ=4239393.4299 ΔΔ.6  
 Ω Χ=399643.0299 Υ=4239377.2299 ΔΔ.6  
 Ω Χ=399659.2299 Υ=4239361.0299 ΔΔ.6  
 Ω Χ=399675.4299 Υ=4239344.8299 ΔΔ.6  
 Ω Χ=399691.6299 Υ=4239328.6299 ΔΔ.6  
 Ω Χ=399707.8299 Υ=4239312.4299 ΔΔ.6  
 Ω Χ=399724.0299 Υ=4239296.2299 ΔΔ.6  
 Ω Χ=399740.2299 Υ=4239280.0299 ΔΔ.6  
 Ω Χ=399756.4299 Υ=4239263.8299 ΔΔ.6  
 Ω Χ=399772.6299 Υ=4239247.6299 ΔΔ.6  
 Ω Χ=399788.8299 Υ=4239230.4299 ΔΔ.6  
 Ω Χ=399805.0299 Υ=4239214.2299 ΔΔ.6  
 Ω Χ=399821.2299 Υ=4239198.0299 ΔΔ.6  
 Ω Χ=399837.4299 Υ=4239181.8299 ΔΔ.6  
 Ω Χ=399853.6299 Υ=4239165.6299 ΔΔ.6  
 Ω Χ=399869.8299 Υ=4239149.4299 ΔΔ.6  
 Ω Χ=399886.0299 Υ=4239133.2299 ΔΔ.6  
 Ω Χ=399902.2299 Υ=4239117.0299 ΔΔ.6  
 Ω Χ=399918.4299 Υ=4239100.8299 ΔΔ.6  
 Ω Χ=399934.6299 Υ=4239084.6299 ΔΔ.6  
 Ω Χ=399950.8299 Υ=4239068.4299 ΔΔ.6  
 Ω Χ=399967.0299 Υ=4239052.2299 ΔΔ.6  
 Ω Χ=399983.2299 Υ=4239036.0299 ΔΔ.6  
 Ω Χ=399999.4299 Υ=4239019.8299 ΔΔ.6  
 Ω Χ=400015.6299 Υ=4239003.6299 ΔΔ.6  
 Ω Χ=400031.8299 Υ=4239000.0299 ΔΔ.6  
 Ω Χ=400048.0299 Υ=4239000.0299 ΔΔ.6  
 Ω Χ=400064.2299 Υ=4239000.0299 ΔΔ.6  
 Ω Χ=400080.4299 Υ=4239000.0299 ΔΔ.6  
 Ω Χ=400096.6299 Υ=4239000.0299 ΔΔ.6  
 Ω Χ=400112.8299 Υ=4239000.0299 ΔΔ.6  
 Ω Χ=400129.0299 Υ=4239000.0299 ΔΔ.6  
 Ω Χ=400145.2299 Υ=4239000.0299 ΔΔ.6  
 Ω Χ=400161.4299 Υ=4239000.0299 ΔΔ.6  
 Ω Χ=400177.6299 Υ=4239000.0299 ΔΔ.6  
 Ω Χ=400193.8299 Υ=4239000.0299 ΔΔ.6  
 Ω Χ=400210.0299 Υ=4239000.0299 ΔΔ.6  
 Ω Χ=400226.2299 Υ=4239000.0299 ΔΔ.6  
 Ω Χ=400242.4299 Υ=4239000.0299 ΔΔ.6  
 Ω Χ=400258.6299 Υ=4239000.0299 ΔΔ.6  
 Ω Χ=400274.8299 Υ=4239000.0299 ΔΔ.6  
 Ω Χ=400291.0299 Υ=4239000.0299 ΔΔ.6  
 Ω Χ=400307.2299 Υ=4239000.0299 ΔΔ.6  
 Ω Χ=400323.4299 Υ=4239000.0299 ΔΔ.6  
 Ω Χ=400339.6299 Υ=4239000.0299 ΔΔ.6  
 Ω Χ=400355.8299 Υ=4239000.0299 ΔΔ.6  
 Ω Χ=400372.0299 Υ=4239000.0299 ΔΔ.6  
 Ω Χ=400388.2299 Υ=4239000.0299 ΔΔ.6  
 Ω Χ=400404.4299 Υ=4239000.0299 ΔΔ.6  
 Ω Χ=400420.6299 Υ=4239000.0299 ΔΔ.6  
 Ω Χ=400436.8299 Υ=4239000.0299 ΔΔ.6  
 Ω Χ=400453.0299 Υ=4239000.0299 ΔΔ.6  
 Ω Χ=400469.2299 Υ=4239000.0299 ΔΔ.6  
 Ω Χ=400485.4299 Υ=4239000.0299 ΔΔ.6  
 Ω Χ=400501.6299 Υ=4239000.0299 ΔΔ.6  
 Ω Χ=400517.8299 Υ=4239000.0299 ΔΔ.6  
 Ω Χ=400534.0299 Υ=4239000.0299 ΔΔ.6  
 Ω Χ=400550.2299 Υ=4239000.0299 ΔΔ.6  
 Ω Χ=400566.4299 Υ=4239000.0299 ΔΔ.6  
 Ω Χ=400582.6299 Υ=4239000.0299 ΔΔ.6  
 Ω Χ=400598.8299 Υ=4239000.0299 ΔΔ.6  
 Ω Χ=400615.0299 Υ=4239000.0299 ΔΔ.6  
 Ω Χ=400631.2299 Υ=4239000.0299 ΔΔ.6  
 Ω Χ=400647.4299 Υ=4239000.0299 ΔΔ.6  
 Ω Χ=400663.6299 Υ=4239000.0299 ΔΔ.6  
 Ω Χ=400679.8299 Υ=4239000.0299 ΔΔ.6  
 Ω Χ=400696.0299 Υ=4239000.0299 ΔΔ.6  
 Ω Χ=400712.2299 Υ=4239000.0299 ΔΔ.6  
 Ω Χ=400728.4299 Υ=4239000.0299 ΔΔ.6  
 Ω Χ=400744.6299 Υ=4239000.0299 ΔΔ.6  
 Ω Χ=400760.8299 Υ=4239000.0299 ΔΔ.6  
 Ω Χ=400777.0299 Υ=4239000.0299 ΔΔ.6  
 Ω Χ=400793.2299 Υ=4239000.0299 ΔΔ.6  
 Ω Χ=400809.4299 Υ=4239000.0299 ΔΔ.6  
 Ω Χ=400825.6299 Υ=4239000.0299 ΔΔ.6  
 Ω Χ=400841.8299 Υ=4239000.0299 ΔΔ.6  
 Ω Χ=400858.0299 Υ=4239000.0299 ΔΔ.6  
 Ω Χ=400874.2299 Υ=4239000.0299 ΔΔ.6  
 Ω Χ=400890.4299 Υ=4239000.0299 ΔΔ.6  
 Ω Χ=400906.6299 Υ=4239000.0299 ΔΔ.6  
 Ω Χ=400922.8299 Υ=4239000.0299 ΔΔ.6  
 Ω Χ=400939.0299 Υ=4239000.0299 ΔΔ.6  
 Ω Χ=400955.2299 Υ=4239000.0299 ΔΔ.6  
 Ω Χ=400971.4299 Υ=4239000.0299 ΔΔ.6  
 Ω Χ=400987.6299 Υ=4239000.0299 ΔΔ.6  
 Ω Χ=401003.8299 Υ=4239000.0299 ΔΔ.6  
 Ω Χ=401020.0299 Υ=4239000.0299 ΔΔ.6  
 Ω Χ=401036.2299 Υ=4239000.0299 ΔΔ.6  
 Ω Χ=401052.4299 Υ=4239000.0299 ΔΔ.6  
 Ω Χ=401068.6299 Υ=4239000.0299 ΔΔ.6  
 Ω Χ=401084.8299 Υ=4239000.0299 ΔΔ.6  
 Ω Χ=401101.0299 Υ=4239000.0299 ΔΔ.6  
 Ω Χ=401117.2299 Υ=4239000.0299 ΔΔ.6  
 Ω Χ=401133.4299 Υ=4239000.0299 ΔΔ.6  
 Ω Χ=401149.6299 Υ=4239000.0299 ΔΔ.6  
 Ω Χ=401165.8299 Υ=4239000.0299 ΔΔ.6  
 Ω Χ=401182.0299 Υ=4239000.0299 ΔΔ.6  
 Ω Χ=401198.2299 Υ=4239000.0299 ΔΔ.6  
 Ω Χ=401214.4299 Υ=4239000.0299 ΔΔ.6  
 Ω Χ=401230.6299 Υ=4239000.0299 ΔΔ.6  
 Ω Χ=401246.8299 Υ=4239000.0299 ΔΔ.6  
 Ω Χ=401263.0299 Υ=4239000.0299 ΔΔ.6  
 Ω Χ=401279.2299 Υ=4239000.0299 ΔΔ.6  
 Ω Χ=401295.4299 Υ=4239000.0299 ΔΔ.6  
 Ω Χ=401311.6299 Υ=4239000.0299 ΔΔ.6  
 Ω Χ=401327.8299 Υ=4239000.0299 ΔΔ.6  
 Ω Χ=401344.0299 Υ=4239000.0299 ΔΔ.6  
 Ω Χ=401360.2299 Υ=4239000.0299 ΔΔ.6  
 Ω Χ=401376.4299 Υ=4239000.0299 ΔΔ.6  
 Ω Χ=401392.6299 Υ=4239000.0299 ΔΔ.6  
 Ω Χ=401408.8299 Υ=4239000.0299 ΔΔ.6  
 Ω Χ=401425.0299 Υ=4239000.0299 ΔΔ.6  
 Ω Χ=401441.2299 Υ=4239000.0299 ΔΔ.6  
 Ω Χ=401457.4299 Υ=4239000.0299 ΔΔ.6  
 Ω Χ=401473.6299 Υ=4239000.0299 ΔΔ.6  
 Ω Χ=401489.8299 Υ=4239000.0299 ΔΔ.6  
 Ω Χ=401506.0299 Υ=4239000.0299 ΔΔ.6  
 Ω Χ=401522.2299 Υ=4239000.0299 ΔΔ.6  
 Ω Χ=401538.4299 Υ=4239000.0299 ΔΔ.6  
 Ω Χ=401554.6299 Υ=4239000.0299 ΔΔ.6  
 Ω Χ=401570.8299 Υ=4239000.0299 ΔΔ.6  
 Ω Χ=401587.0299 Υ=4239000.0299 ΔΔ.6  
 Ω Χ=401603.2299 Υ=4239000.0299 ΔΔ.6  
 Ω Χ=401619.4299 Υ=4239000.0299 ΔΔ.6  
 Ω Χ=401635.6299 Υ=4239000.0299 ΔΔ.6  
 Ω Χ=401651.8299 Υ=4239000.0299 ΔΔ.6  
 Ω Χ=401668.0299 Υ=4239000.0299 ΔΔ.6  
 Ω Χ=401684.2299 Υ=4239000.0299 ΔΔ.6  
 Ω Χ=401700.4299 Υ=4239000.0299 ΔΔ.6  
 Ω Χ=401716.6299 Υ=4239000.0299 ΔΔ.6  
 Ω Χ=401732.8299 Υ=4239000.0299 ΔΔ.6  
 Ω Χ=401749.0299 Υ=4239000.0299 ΔΔ.6  
 Ω Χ=401765.2299 Υ=4239000.0299 ΔΔ.6  
 Ω Χ=401781.4299 Υ=4239000.0299 ΔΔ.6  
 Ω Χ=401797.6299 Υ=4239000.0299 ΔΔ.6  
 Ω Χ=401813.8299 Υ=4239000.0299 ΔΔ.6  
 Ω Χ=401830.0299 Υ=4239000.0299 ΔΔ.6  
 Ω Χ=401846.2299 Υ=4239000.0299 ΔΔ.6  
 Ω Χ=401862.4299 Υ=4239000.0299 ΔΔ.6  
 Ω Χ=401878.6299 Υ=4239000.0299 ΔΔ.6  
 Ω Χ=401894.8299 Υ=4239000.0299 ΔΔ.6  
 Ω Χ=401911.0299 Υ=4239000.0299 ΔΔ.6  
 Ω Χ=401927.2299 Υ=4239000.0299 ΔΔ.6  
 Ω Χ=401943.4299 Υ=4239000.0299 ΔΔ.6  
 Ω Χ=401959.6299 Υ=4239000.0299 ΔΔ.6  
 Ω Χ=401975.8299 Υ=4239000.0299 ΔΔ.6  
 Ω Χ=401992.0299 Υ=4239000.0299 ΔΔ.6  
 Ω Χ=402008.2299 Υ=4239000.0299 ΔΔ.6  
 Ω Χ=402024.4299 Υ=4239000.0299 ΔΔ.6  
 Ω Χ=402040.6299 Υ=4239000.0299 ΔΔ.6  
 Ω Χ=402056.8299 Υ=4239000.0299 ΔΔ.6  
 Ω Χ=402073.0299 Υ=4239000.0299 ΔΔ.6  
 Ω Χ=402089.2299 Υ=4239000.0299 ΔΔ.6  
 Ω Χ=402105.4299 Υ=4239000.0299 ΔΔ.6  
 Ω Χ=402121.6299 Υ=4239000.0299 ΔΔ.6  
 Ω Χ=402137.8299 Υ=4239000.0299 ΔΔ.6  
 Ω Χ=402154.0299 Υ=4239000.0299 ΔΔ.6  
 Ω Χ=402170.2299 Υ=4239000.0299 ΔΔ.6  
 Ω Χ=402186.4299 Υ=4239000.0299 ΔΔ.6  
 Ω Χ=402202.6299 Υ=4239000.0299 ΔΔ.6  
 Ω Χ=402218.8299 Υ=4239000.0299 ΔΔ.6  
 Ω Χ=402235.0299 Υ=4239000.0299 ΔΔ.6  
 Ω Χ=402251.2299 Υ=4239000.0299 ΔΔ.6  
 Ω Χ=402267.4299 Υ=4239000.0299 ΔΔ.6  
 Ω Χ=402283.6299 Υ=4239000.0299 ΔΔ.6  
 Ω Χ=402299.8299 Υ=4239000.0299 ΔΔ.6  
 Ω Χ=402316.0299 Υ=4239000.0299 ΔΔ.6  
 Ω Χ=402332.2299 Υ=4239000.0299 ΔΔ.6  
 Ω Χ=402348.4299 Υ=4239000.0299 ΔΔ.6  
 Ω Χ=402364.6299 Υ=4239000.0299 ΔΔ.6  
 Ω Χ=402380.8299 Υ=4239000.0299 ΔΔ.6  
 Ω Χ=402397.0299 Υ=4239000.0299 ΔΔ.6  
 Ω Χ=402413.2299 Υ=4239000.0299 ΔΔ.6  
 Ω Χ=402429.4299 Υ=4239000.0299 ΔΔ.6  
 Ω Χ=402445.6299 Υ=4239000.0299 ΔΔ.6  
 Ω Χ=402461.8299 Υ=4239000.0299 ΔΔ.6  
 Ω Χ=402478.0299 Υ=4239000.0299 ΔΔ.6  
 Ω Χ=402494.2299 Υ=4239000.0299 ΔΔ.6  
 Ω Χ=402510.4299 Υ=4239000.0299 ΔΔ.6  
 Ω Χ=402526.6299 Υ=4239000.0299 ΔΔ.6  
 Ω Χ=402542.8299 Υ=4239000.0299 ΔΔ.6  
 Ω Χ=402559.0299 Υ=4239000.0299 ΔΔ.6  
 Ω Χ=402575.2299 Υ=4239000.0299 ΔΔ.6  
 Ω Χ=402591.4299 Υ=4239000.0299 ΔΔ.6  
 Ω Χ=402607.6299 Υ=4239000.0299 ΔΔ.6  
 Ω Χ=402623.8299 Υ=4239000.0299 ΔΔ.6  
 Ω Χ=402640.0299 Υ=4239000.0299 ΔΔ.6  
 Ω Χ=402656.2299 Υ=4239000.0299 ΔΔ.6  
 Ω Χ=402672.4299 Υ=4239000.0299 ΔΔ.6  
 Ω Χ=402688.6299 Υ=4239000.0299 ΔΔ.6  
 Ω Χ=402704.8299 Υ=4239000.0299 ΔΔ.6  
 Ω Χ=402721.0299 Υ=4239000.0299 ΔΔ.6  
 Ω Χ=402737.2299 Υ=4239000.0299 ΔΔ.6  
 Ω Χ=402753.4299 Υ=4239000.0299 ΔΔ.6  
 Ω Χ=402769.6299 Υ=4239000.0299 ΔΔ.6  
 Ω Χ=402785.8299 Υ=4239000.0299 ΔΔ.6  
 Ω Χ=402802.0299 Υ=4239000.0299 ΔΔ.6  
 Ω Χ=402818.2299 Υ=4239000.0299 ΔΔ.6  
 Ω Χ=402834.4299 Υ=4239000.0299 ΔΔ.6  
 Ω Χ=402850.6299 Υ=4239000.0299 ΔΔ.6  
 Ω Χ=402866.8299 Υ=4239000.0299 ΔΔ.6  
 Ω Χ=402883.0299 Υ=4239000.0299 ΔΔ.6  
 Ω Χ=402899.2299 Υ=4239000.0299 ΔΔ.6  
 Ω Χ=402915.4299 Υ=4239000.0299 ΔΔ.6  
 Ω Χ=402931.6299 Υ=4239000.0299 ΔΔ.6  
 Ω Χ=402947.8299 Υ=4239000.0299 ΔΔ.6  
 Ω Χ=402964.0299 Υ=4239000.0299 ΔΔ.6  
 Ω Χ=402980.2299 Υ=4239000.0299 ΔΔ.6  
 Ω Χ=402996.4299 Υ=4239000.0299 ΔΔ.6  
 Ω Χ=403012.6299 Υ=4239000.0299 ΔΔ.6  
 Ω Χ=403028.8299 Υ=4239000.0299 ΔΔ.6  
 Ω Χ=403045.0299 Υ=4239000.0299 ΔΔ.6  
 Ω Χ=403061.2299 Υ=4239000.0299 ΔΔ.6  
 Ω Χ=403077.4299 Υ=4239000.0299 ΔΔ.6  
 Ω Χ=403093.6299 Υ=4239000.0299 ΔΔ.6  
 Ω Χ=403109.8299 Υ=4239000.0299 ΔΔ.6  
 Ω Χ=403126.0299 Υ=4239000.0299 ΔΔ.6  
 Ω Χ=403142.2299 Υ=4239000.0299 ΔΔ.6  
 Ω Χ=403158.4299 Υ=4239000.0299 ΔΔ.6  
 Ω Χ=403174.6299 Υ=4239000.0299 ΔΔ.6  
 Ω Χ=403190.8299 Υ=4239000.0299 ΔΔ.6  
 Ω Χ=403207.0299 Υ=4239000.0299 ΔΔ.6  
 Ω Χ=403223.2299 Υ=4239000.0299 ΔΔ.6  
 Ω Χ=403239.4299 Υ=4239000.0299 ΔΔ.6  
 Ω Χ=403255.6299 Υ=4239000.0299 ΔΔ.6  
 Ω Χ=403271.8299 Υ=4239000.0299 ΔΔ.6  
 Ω Χ=403288.0299 Υ=4239000.0299 ΔΔ.6  
 Ω Χ=403304.2299 Υ=4239000.0299 ΔΔ.6  
 Ω Χ=403320.4299 Υ=4239000.0299 ΔΔ.6  
 Ω Χ=403336.6299 Υ=4239000.0299 ΔΔ.6  
 Ω Χ=403352.8299 Υ=4239000.0299 ΔΔ.6  
 Ω Χ=403369.0299 Υ=4239000.0299 ΔΔ.6  
 Ω Χ=403385.2299 Υ=4239000.0299 ΔΔ.6  
 Ω Χ=403401.4299 Υ=4239000.0299 ΔΔ.6  
 Ω Χ=403417.6299 Υ=4239000.0299 ΔΔ.6  
 Ω Χ=403433.8299 Υ=4239000.0299 ΔΔ.6  
 Ω Χ=403450.0299 Υ=4239000.0299 ΔΔ.6  
 Ω Χ=403466.2299 Υ=4239000.0299 ΔΔ.6  
 Ω Χ=403482.4299 Υ=4239000.0299 ΔΔ.6  
 Ω Χ=403498.6299 Υ=4239000.0299 ΔΔ.6  
 Ω Χ=403514.8299 Υ=4239000.0299 ΔΔ.6  
 Ω Χ=403531.0299 Υ=4239000.0299 ΔΔ.6  
 Ω Χ=403547.2299 Υ=4239000.0299 ΔΔ.6  
 Ω Χ=403563.4299 Υ=4239000.0299 ΔΔ.6  
 Ω Χ=403579.6299 Υ=4239000.0299 ΔΔ.6  
 Ω Χ=403595.8299 Υ=4239000.0299 ΔΔ.6