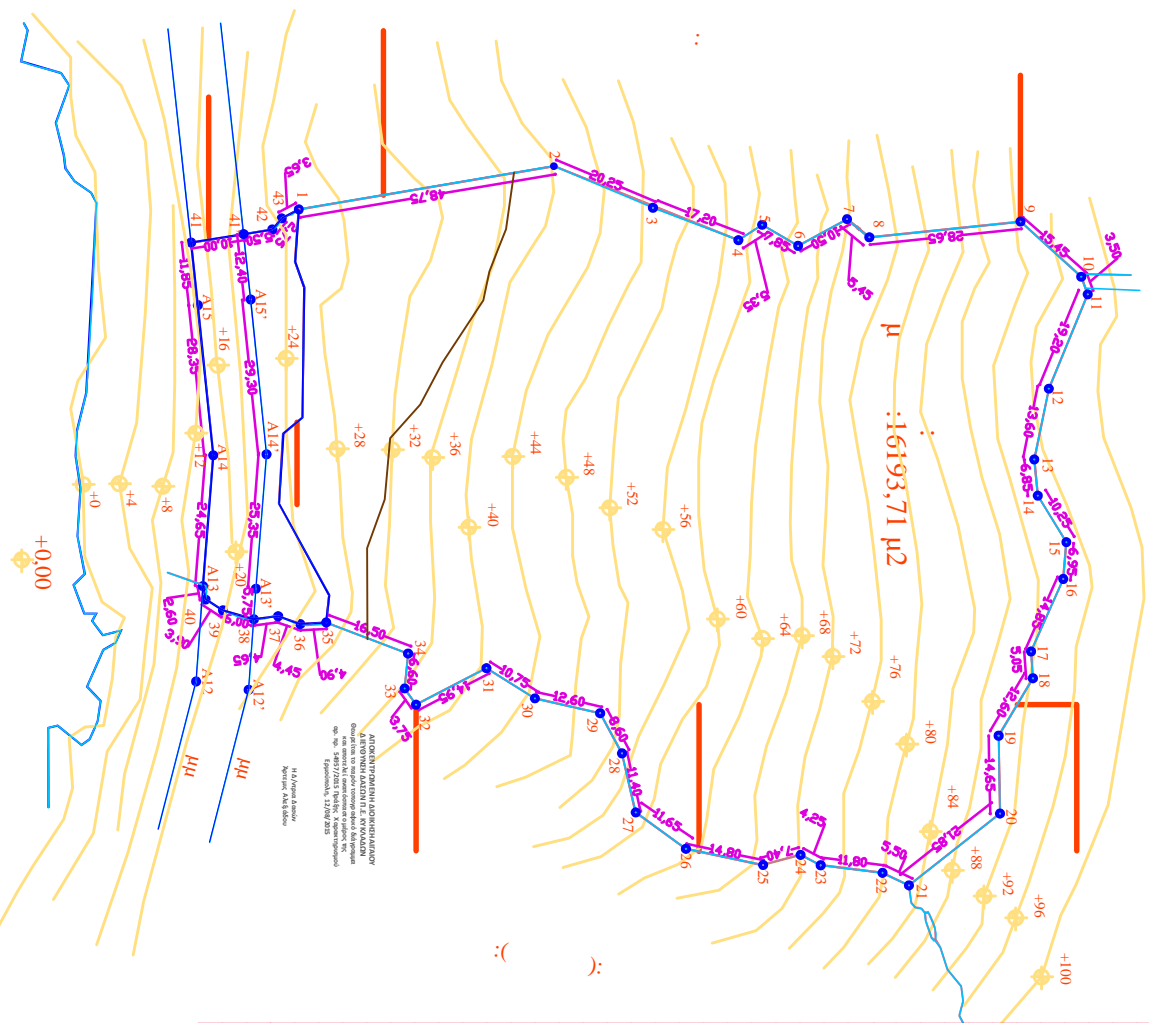


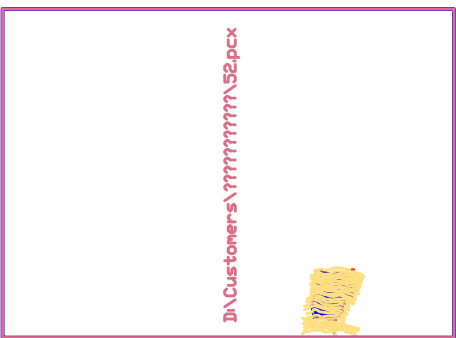


:1/1 000



	X _n	Y _n
1	542635.18	4108742.54
2	542627.04	4108790.64
3	542634.88	4108809.32
4	542640.98	4108825.42
5	542638.08	4108829.93
6	542642.04	4108836.66
7	542637.02	4108845.94
8	542640.44	4108850.14
9	542637.47	4108878.63
10	542647.86	4108890.08
11	542651.17	4108891.31
12	542668.93	4108883.98
13	542682.26	4108881.24
14	542689.08	4108881.90
15	542697.82	4108887.28
16	542704.75	4108880.63
17	542718.40	4108880.63
18	542723.44	4108880.97
19	542734.27	4108874.51
20	542748.93	4108874.78
21	542762.45	4108857.60
22	542760.08	4108852.68
23	542758.63	4108840.91
24	542756.68	4108837.13
25	542758.61	4108829.98
26	542755.55	4108815.54
27	542748.72	4108806.09
28	542737.58	4108805.50
29	542730.03	4108799.36
30	542727.24	4108787.07
31	542721.55	4108777.93
32	542728.44	4108764.65
33	542725.36	4108762.50
34	542718.79	4108763.15
35	542712.95	4108747.71
36	542713.25	4108742.82
37	542711.76	4108738.63
38	542712.33	4108734.01
39	542710.67	4108728.24
40	542708.55	4108724.97
A13	542705.99	4108724.46
A14	542681.41	4108726.41
A15	542653.15	4108723.51
41	542641.42	4108722.33
42	542638.95	4108737.55
43	542636.86	4108739.22
A15	542639.90	4108732.13
A15	542652.13	4108733.46
A14	542681.30	4108736.45
A13	542706.59	4108734.45

:10 μ . . . 7532.6



1) (1,2,3...39,40, 13, 14, 15,41,41',42,43,1)=16193,71 2.
 (41',41, 15, 14, 13,40,39,38,37, 13', 14', 15',41)
 =702,40 2

. 651-77

2014