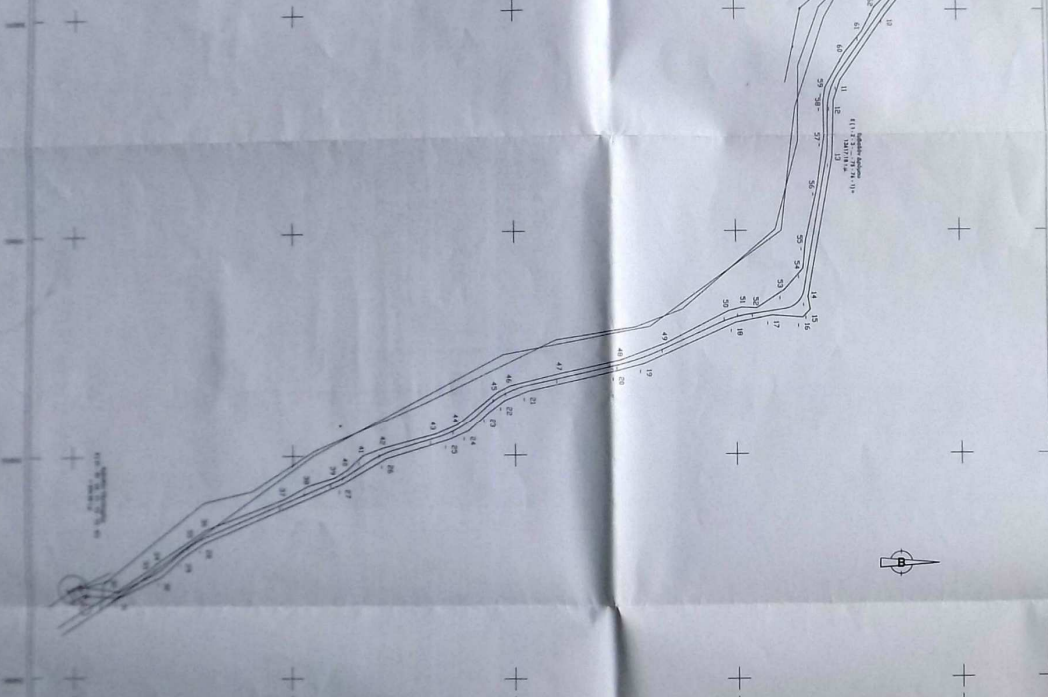




ΑΡΧΙΤΕΚΤΟΝΙΚΟ ΠΡΟΤΥΠΟ ΚΑΤΑΣΤΡΟΦΟΥ



ΑΡΧΙΤΕΚΤΟΝΙΚΟ
ΠΡΟΤΥΠΟ ΚΑΤΑΣΤΡΟΦΟΥ

ΤΑΜΙΑ 1 - ΥΔΡΟΜΕΤΡΑ 1

ΣΕΙΡΑ	Υ	Α
Y1	307750	421694.66
Y2	307730	421699.50
Y3	307710	421704.34
Y4	307690	421709.18

ΓΡΑΦΕΙΟ ΤΕΧΝΙΚΩΝ ΕΡΓΩΝ

ΤΑΜΙΑ 2 - ΔΡΟΜΟΣ

ΣΕΙΡΑ	Υ	Α
2	307800	421680.00
3	307800	421680.00
4	307800	421680.00
5	307800	421680.00
6	307800	421680.00
7	307800	421680.00
8	307800	421680.00
9	307800	421680.00
10	307800	421680.00
11	307800	421680.00
12	307800	421680.00
13	307800	421680.00
14	307800	421680.00
15	307800	421680.00
16	307800	421680.00
17	307800	421680.00
18	307800	421680.00
19	307800	421680.00
20	307800	421680.00
21	307800	421680.00
22	307800	421680.00
23	307800	421680.00
24	307800	421680.00
25	307800	421680.00
26	307800	421680.00
27	307800	421680.00
28	307800	421680.00
29	307800	421680.00
30	307800	421680.00
31	307800	421680.00
32	307800	421680.00
33	307800	421680.00
34	307800	421680.00
35	307800	421680.00
36	307800	421680.00
37	307800	421680.00
38	307800	421680.00
39	307800	421680.00
40	307800	421680.00
41	307800	421680.00
42	307800	421680.00
43	307800	421680.00
44	307800	421680.00
45	307800	421680.00
46	307800	421680.00
47	307800	421680.00
48	307800	421680.00
49	307800	421680.00
50	307800	421680.00
51	307800	421680.00
52	307800	421680.00
53	307800	421680.00
54	307800	421680.00
55	307800	421680.00
56	307800	421680.00
57	307800	421680.00
58	307800	421680.00
59	307800	421680.00
60	307800	421680.00

ΤΑΜΙΑ 3 - ΣΥΝΤΡΗΜΑ

A01	307780	421692
A2	307780	421692
A3	307780	421692
A4	307811	421681
A5	307842	421670
A6	307873	421659
A7	307904	421648
A8	307935	421637
A9	307966	421626
A10	307997	421615
A11	308028	421604
A12	308059	421593
A13	308090	421582
A14	308121	421571
A15	308152	421560
A16	308183	421549
A17	308214	421538
A18	308245	421527
A19	308276	421516
A20	308307	421505
A21	308338	421494
A22	308369	421483
A23	308400	421472
A24	308431	421461
A25	308462	421450
A26	308493	421439
A27	308524	421428
A28	308555	421417
A29	308586	421406
A30	308617	421395
A31	308648	421384
A32	308679	421373
A33	308710	421362

ΑΡΙΘΜΟΣ ΠΡΩΤΟΚΟΛΛΟΥ: 7

ΕΠΙΣΤΗΜΟΝΙΚΗ ΟΜΑΔΑ

ΜΗΧΑΝΙΚΟΙ

ΕΠΙΧΕΙΡΗΣΙΑΚΗ ΕΚΔΟΣΗ

ΑΡΧΙΤΕΚΤΟΝΙΚΟ ΠΡΟΤΥΠΟ ΚΑΤΑΣΤΡΟΦΟΥ

ΚΑΤΑΣΤΡΟΦΗ

ΜΟΝΟ ΦΑΣΜΑΤΙΚΗΣ ΕΡΓΑΣΙΑΣ ΟΤ. ΕΡΓΟΣ Ο.Τ. Μ.Υ.

ΔΙΑΧΕΙΡΙΣΗ ΠΡΟΓΡΑΜΜΑΤΟΣ ΕΡΓΑΣΙΑΣ

ΑΡΧΙΤΕΚΤΟΝΙΚΟ ΠΡΟΤΥΠΟ ΚΑΤΑΣΤΡΟΦΟΥ

ΕΠΙΣΤΗΜΟΝΙΚΗ ΟΜΑΔΑ

ΑΡΧΙΤΕΚΤΟΝΙΚΟ ΠΡΟΤΥΠΟ ΚΑΤΑΣΤΡΟΦΟΥ

ΑΡΧΙΤΕΚΤΟΝΙΚΟ ΠΡΟΤΥΠΟ ΚΑΤΑΣΤΡΟΦΟΥ

ΑΡΧΙΤΕΚΤΟΝΙΚΟ ΠΡΟΤΥΠΟ ΚΑΤΑΣΤΡΟΦΟΥ

ТМННМА 1 : ΥΔΡΟΜΗΧΙΑ 1

α/α	X	Y
Y1	308720.50	4215994.88
Y2	308729.37	4215999.50
Y3	308724.74	4216008.37
Y4	308715.88	4216003.74

ΤΜΗΜΑ 2 : ΔΡΟΜΟΣ

Σημείο	X	Y	Απόσταση
1	307815.368	4216764.077	75.96
2	307891.224	4216768.021	25.47
3	307916.481	4216771.277	57.52
4	307970.814	4216790.144	18.85
5	307989.603	4216791.648	78.60
6	308068.203	4216791.230	57.16
7	308125.333	4216789.353	30.06
8	308152.627	4216776.768	37.26
9	308181.969	4216753.811	29.05
10	308204.754	4216735.789	73.97
11	308265.775	4216693.985	19.30
12	308284.109	4216687.949	50.98
13	308335.078	4216686.677	126.30
14	308459.353	4216664.147	11.69
15	308470.875	4216666.149	9.61
16	308477.806	4216659.489	27.60
17	308475.763	4216631.961	33.14
18	308482.187	4216599.451	88.82
19	308518.251	4216518.282	26.01
20	308524.857	4216493.123	82.95
21	308542.493	4216412.069	22.75
22	308550.826	4216390.900	18.43
23	308561.761	4216376.064	24.05
24	308577.894	4216358.226	18.30
25	308585.301	4216341.491	59.95
26	308602.624	4216284.102	43.93
27	308624.449	4216245.976	136.82
28	308677.454	4216119.839	22.50
29	308689.745	4216100.989	26.51
30	308707.112	4216080.956	44.50
31	308726.306	4216040.810	5.80
32	308720.727	4216039.219	35.73
33	308701.485	4216069.329	11.41
34	308694.215	4216078.129	37.12
35	308674.073	4216109.306	14.56
36	308665.661	4216121.190	75.82
37	308638.638	4216192.031	25.16
38	308626.672	4216214.165	25.11
39	308619.464	4216238.218	12.81
40	308612.764	4216249.136	19.73
41	308599.558	4216263.794	19.49
42	308592.841	4216282.093	47.67
43	308580.773	4216328.210	21.64
44	308572.468	4216348.195	46.28
45	308543.467	4216384.255	12.64
46	308537.726	4216395.514	47.10
47	308526.860	4216441.345	56.44
48	308515.320	4216496.596	43.77
49	308500.104	4216537.639	62.41
50	308471.670	4216593.193	12.36
51	308468.626	4216605.171	13.18
52	308469.317	4216618.332	29.56
53	308453.232	4216643.134	25.29
54	308434.227	4216659.824	24.80
55	308409.560	4216662.409	50.07
56	308360.694	4216673.308	44.11
57	308317.003	4216679.379	32.72
58	308284.285	4216678.876	12.31
59	308272.112	4216680.722	36.05
60	308240.703	4216698.413	25.05
61	308221.224	4216714.170	25.26
62	308198.761	4216725.726	30.91
63	308176.897	4216747.581	31.93
64	308150.517	4216765.570	19.42
65	308133.039	4216774.040	44.96
66	308088.716	4216781.578	18.68
67	308070.037	4216781.679	25.25
68	308044.938	4216778.936	25.36
69	308019.916	4216783.067	38.15
70	307981.766	4216782.751	21.71
71	307961.675	4216774.530	29.61
72	307933.695	4216764.852	16.40
73	307917.451	4216762.573	14.41
74	307903.428	4216759.260	36.73
75	307866.827	4216756.229	51.06
76	307815.766	4216755.890	8.20

ΤΜΗΜΑ 3 : ΟΙΚΟΠΕΔΟ

α/α	X	Y
A1	307761.84	4216826
A2	307768.69	4216822.51
A3	307795.86	4216816.17
A4	307811.91	4216810.72
A5	307837.32	4216803.18
A6	307846.43	4216798.13
A7	307846.02	4216794.93
A8	307845.28	4216789.2
A9	307844.9	4216786.22
A10	307844.42	4216782.45
A11	307840.48	4216751.7
A12	307838.83	4216739.02
A13	307838.44	4216736.01
A14	307837.7	4216730.38
A15	307831.73	4216731.67
A16	307829.82	4216733.26
A17	307826.08	4216733.54
A18	307822.12	4216735.27
A19	307819.57	4216740.14
A20	307814.87	4216746.25
A21	307809.39	4216750.95
A22	307805.29	4216754.01
A23	307801.75	4216754.31
A24	307797.29	4216756.68
A25	307782.38	4216769.83
A26	307781.24	4216772.29
A27	307764.25	4216790.73
A28	307762.07	4216794.06
A29	307762.47	4216796.21
A30	307762.82	4216798.06
A31	307756.88	4216818.77
A32	307760.71	4216824.35

Σημείο	X	Y
1'	307842.25	4216765.47
2'	307841.04	42167556.06
3'	307891.84	42167558.30
4'	307889.25	4216767.92