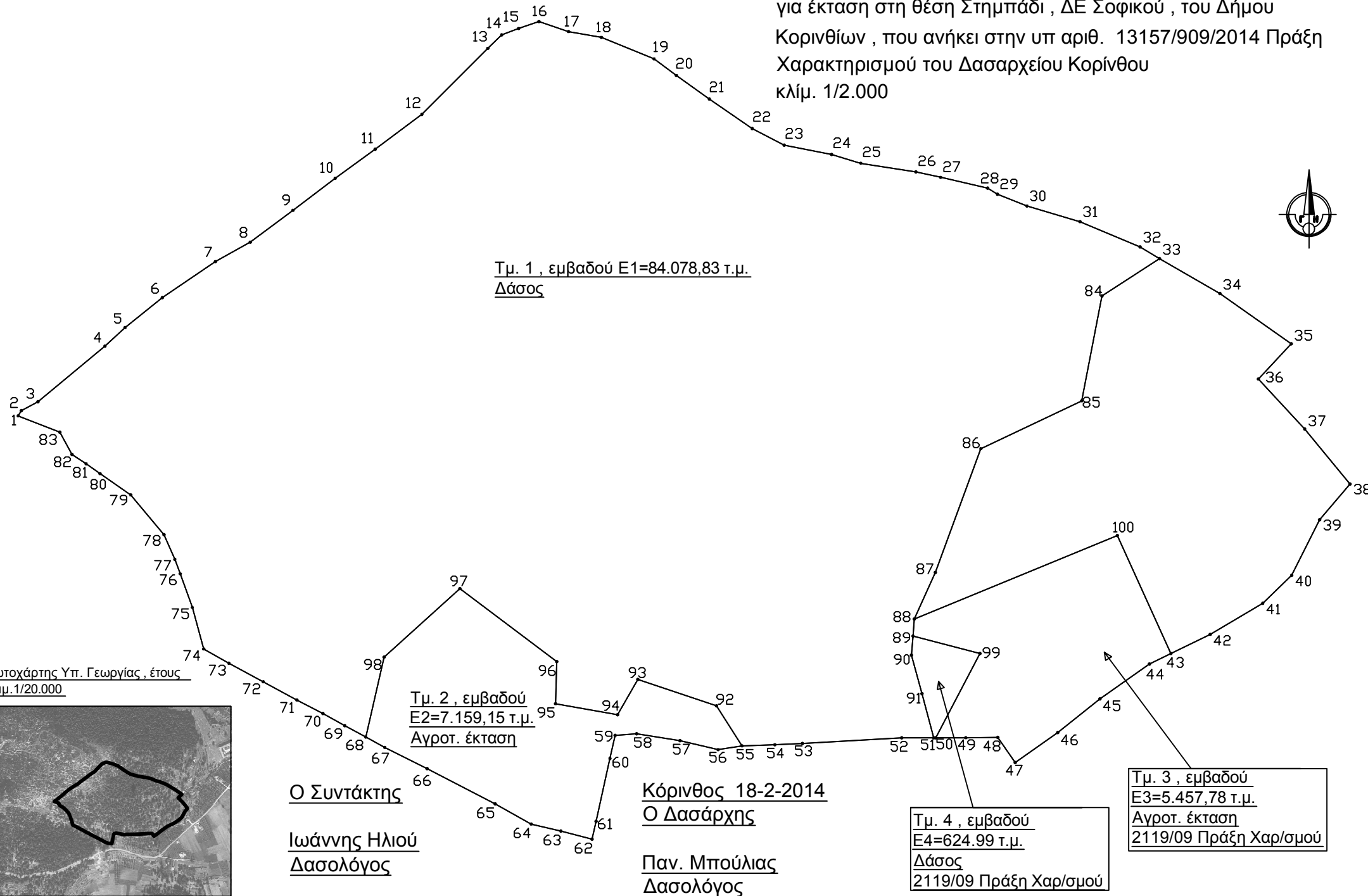


# Τοπογραφικό Διάγραμμα

για έκταση στη θέση Στημπάδι, ΔΕ Σοφικού, του Δήμου Κορινθίων, που ανήκει στην υπ αριθ. 13157/909/2014 Πράξη Χαρακτηρισμού του Δασαρχείου Κορίνθου κλίμ. 1/2.000



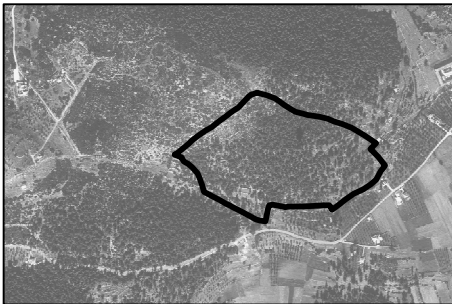
Τμ. 1, εμβαδού E1=84.078,83 τ.μ.  
Δάσος

Τμ. 2, εμβαδού E2=7.159,15 τ.μ.  
Αγροτ. έκταση

Τμ. 4, εμβαδού E4=624,99 τ.μ.  
Δάσος  
2119/09 Πράξη Χαρ/σμού

Τμ. 3, εμβαδού E3=5.457,78 τ.μ.  
Αγροτ. έκταση  
2119/09 Πράξη Χαρ/σμού

Ορθοφωτοχάρτης Υπ. Γεωργίας, έτους 1996 κλίμ. 1/20.000



Ο Συντάκτης  
Ιωάννης Ηλιού  
Δασολόγος

Κόρινθος 18-2-2014  
Ο Δασάρχης  
Παν. Μπούλιας  
Δασολόγος

ΕΜΒΑΔΟΜΕΤΡΗΣΗ ΓΗΠΕΔΟΥ			
ΣΗΜΕΙΟ	X	Y	ΜΗΚΟΣ
1	419220.64	4183534.63	
2	419221.97	4183536.74	2.49
3	419228.84	4183540.45	7.82
4	419256.89	4183563.73	36.45
5	419265.23	4183571.54	11.42
6	419280.84	4183583.98	19.96
7	419303.00	4183599.00	26.78
8	419317.61	4183607.13	16.72
9	419335.34	4183620.49	22.20
10	419353.07	4183633.85	20.64
11	419369.74	4183646.02	24.39
12	419389.31	4183660.57	38.91
13	419416.83	4183688.09	8.14
14	419422.65	4183693.78	7.49
15	419429.68	4183696.37	8.98
16	419438.17	4183699.26	13.05
17	419450.56	4183695.16	13.97
18	419464.31	4183692.65	23.67
19	419486.20	4183683.67	11.68
20	419493.61	4183676.74	16.88
21	419509.36	4183666.97	21.81
22	419527.32	4183654.59	15.03
23	419540.65	4183647.63	20.16
24	419560.44	4183643.80	12.79
25	419572.70	4183640.14	23.25
26	419595.67	4183636.54	10.57
27	419605.98	4183634.21	20.21
28	419625.68	4183629.70	4.81
29	419629.76	4183627.16	13.20
30	419642.00	4183622.20	23.13
31	419664.19	4183615.72	27.21
32	419689.28	4183605.19	9.52
33	419697.42	4183600.25	36.45
34	419722.69	4183585.70	20.04
35	419752.46	4183564.66	28.52
36	419738.74	4183550.04	29.84
37	419758.14	4183529.13	19.51
38	419777.06	4183506.06	26.03
39	419764.36	4183491.24	16.84
40	419752.72	4183467.96	18.19
41	419740.55	4183456.31	10.09
42	419718.59	4183443.35	25.25
43	419702.25	4183435.35	22.50
44	419693.19	4183430.91	21.84
45	419672.55	4183416.36	12.73
46	419654.98	4183406.30	13.33
47	419637.10	4183389.77	12.50
48	419629.82	4183400.22	0.82
49	419616.49	4183400.18	13.44
50	419604.00	4183400.14	11.49
51	419603.17	4183400.13	13.76
52	419589.74	4183400.09	10.18
53	419548.26	4183397.76	16.33
54	419536.79	4183397.14	18.33
55	419523.03	4183396.77	9.94
56	419512.98	4183395.13	26.96
57	419497.09	4183398.89	7.55
58	419478.99	4183401.81	13.39
59	419470.03	4183401.19	17.24
60	419467.89	4183391.49	32.02
61	419462.04	4183365.17	19.81
62	419460.35	4183357.81	9.06
63	419447.38	4183361.15	9.97
64	419434.94	4183364.09	10.42
65	419419.86	4183372.46	12.26
66	419391.48	4183387.27	16.01
67	419373.75	4183396.12	16.22
68	419365.78	4183400.43	12.15
69	419356.99	4183405.13	14.91
70	419347.90	4183410.62	6.40
71	419337.04	4183415.92	11.26
72	419322.26	4183423.53	7.14
73	419308.69	4183431.25	10.56
74	419298.13	4183437.26	43.912
75	419293.32	4183454.54	44.61
76	419288.34	4183468.60	46.52
77	419286.04	4183474.57	55.18
78	419281.56	4183484.90	21.28
79	419276.72	4183501.61	7.15
80	419254.83	4183510.44	10.56
81	419248.96	4183514.50	43.912
82	419243.04	4183518.48	44.61
83	419237.97	4183527.75	46.52
84	419233.39	4183534.63	55.18
85	419664.84	4183540.90	21.28
86	419622.84	4183520.91	7.15
87	419603.79	4183469.12	7.98
88	419594.94	4183449.77	16.73
89	419594.40	4183442.64	85.98
90	419593.79	4183434.69	34.68
91	419598.17	4183418.54	16.98
92	419591.34	4183413.49	26.43
93	419479.44	4183424.47	17.57
94	419471.06	4183409.70	50.65
95	419445.05	4183414.38	42.68
96	419445.58	4183431.94	248.93
97	419405.15	4183462.45	75.63
98	419373.45	4183433.87	461.87
99	419622.38	4183435.36	
100	419679.79	4183484.58	
1	419220.64	4183534.63	

E = 129308.95 μ2