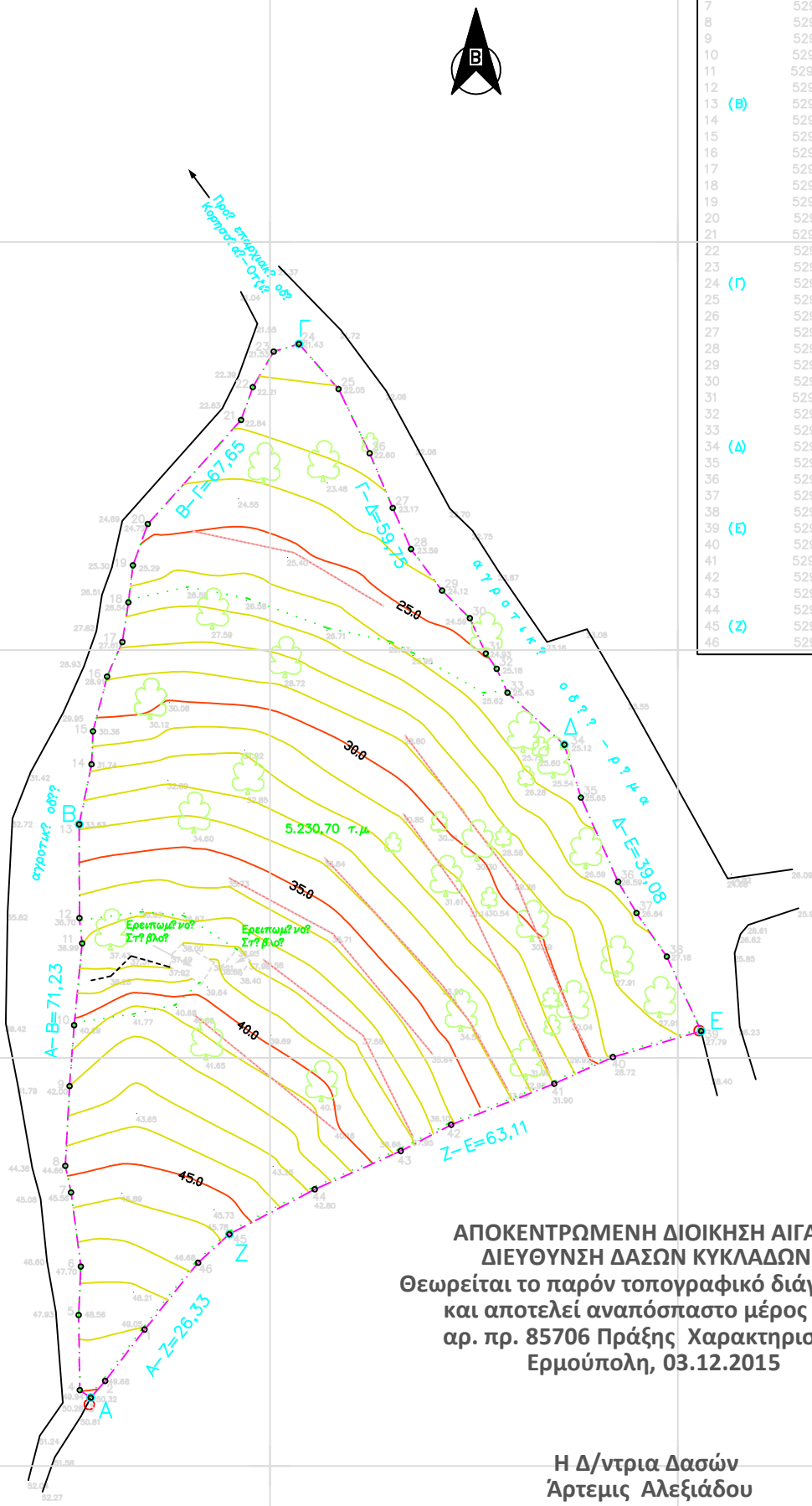


Κωδικός: Ε1 E= 5.230,70 μ ²			
Κορυφές	X	Y	Πλευρές
1	529884.621	4168116.726	7.95
2	529879.774	4168110.419	2.70
3	(A) 529878.011	4168108.374	1.64
4	529876.668	4168109.307	9.19
5	529876.525	4168118.498	5.96
6	529876.785	4168124.452	9.14
7	529875.592	4168133.514	3.34
8	529874.890	4168136.781	9.79
9	529875.413	4168146.554	7.49
10	529875.973	4168154.018	10.07
11	529876.959	4168164.042	3.12
12	529876.618	4168167.148	11.49
13	(B) 529876.596	4168178.641	7.49
14	529878.102	4168185.982	4.06
15	529878.283	4168190.040	6.92
16	529880.016	4168196.737	4.64
17	529881.882	4168200.982	4.91
18	529882.626	4168205.834	4.58
19	529883.184	4168210.375	5.39
20	529885.014	4168215.442	17.13
21	529896.449	4168228.191	4.26
22	529897.878	4168232.205	5.05
23	529900.445	4168236.559	3.23
24	(Γ) 529903.533	4168237.499	7.35
25	529908.389	4168231.978	8.75
26	529912.201	4168224.098	7.26
27	529915.042	4168217.413	5.53
28	529917.285	4168212.359	6.35
29	529921.095	4168207.276	4.80
30	529924.494	4168203.892	4.75
31	529926.457	4168199.571	2.30
32	529927.784	4168197.695	3.22
33	529929.115	4168194.762	9.44
34	(Δ) 529936.081	4168188.394	6.80
35	529938.121	4168181.905	11.28
36	529942.682	4168171.585	4.43
37	529944.934	4168167.769	6.51
38	529948.644	4168162.423	10.05
39	(E) 529952.853	4168153.292	11.28
40	529942.032	4168150.100	7.90
41	529934.837	4168146.840	13.60
42	529922.203	4168141.809	6.96
43	529916.034	4168138.594	11.55
44	529905.484	4168133.903	11.83
45	(Z) 529895.010	4168128.406	5.20
46	529891.173	4168124.900	10.48



ΑΠΟΚΕΝΤΡΩΜΕΝΗ ΔΙΟΙΚΗΣΗ ΑΙΓΑΙΟΥ
ΔΙΕΥΘΥΝΣΗ ΔΑΣΩΝ ΚΥΚΛΑΔΩΝ
 Θεωρείται το παρόν τοπογραφικό διάγραμμα
 και αποτελεί αναπόσπαστο μέρος της
 αρ. πρ. 85706 Πράξης Χαρακτηρισμού
 Ερμούπολη, 03.12.2015

Η Δ/ντρια Δασών
 Άρτεμις Αλεξιάδου