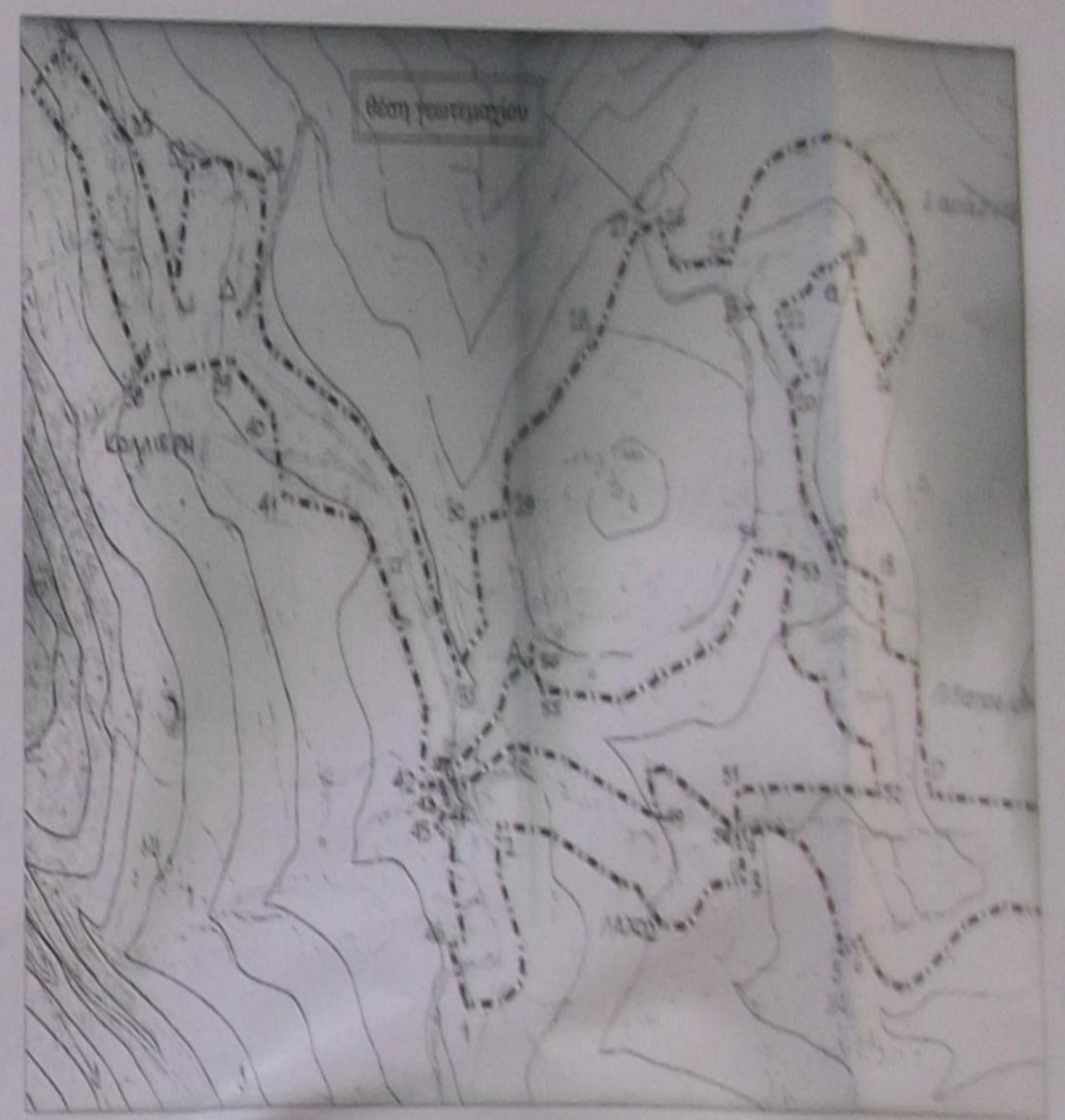




διαγράμμα οριοθέτησης οικισμού "ελατρίθια"



ΤΟ ΠΑΡΟΝ ΓΗΠΕΔΟ ΕΙΝΑΙ ΕΞΑΡΤΗΘΕΝ ΑΠΟ ΤΟ ΕΘΝΙΚΟ ΤΡΙΓΩΝΟΜΕΤΡΙΚΟ ΔΙΚΤΥΟ ΤΗΣ ΧΩΡΑΣ ΜΕ ΣΥΝΤΕΤΑΓΜΕΝΕΣ Ε.Γ.Σ.Α. 87

οδοιμετρικό σκρίψισμα

ΕΜΒΑΔΟΜΕΤΡΗΣΗ ΓΗΠΕΔΟΥ

Με τη βοήθεια των ορθογώνιων συντεταγμένων ΕΓΣΑ 87

ΠΙΝΑΚΑΣ ΣΥΝΤΕΤΑΓΜΕΝΩΝ ΣΗΜΕΙΩΝ ΤΩΝ ΟΙΚΟΠΕΔΩΝ

ΟΜΟΙΟΤΗΤΑ	Χ	Υ	ΜΗΚΟΣ
1	20717.800	47603.513	1.98
2	20718.000	47603.596	1.98
3	20719.000	47603.742	1.98
4	20719.318	47603.825	1.97
5	20719.636	47603.908	1.97
6	20719.954	47603.991	1.97
7	20720.272	47604.074	1.97
8	20720.590	47604.157	1.97
9	20720.908	47604.240	1.97
10	20721.226	47604.323	1.97
11	20721.544	47604.406	1.97
12	20721.862	47604.489	1.97
13	20722.180	47604.572	1.97
14	20722.498	47604.655	1.97
15	20722.816	47604.738	1.97
16	20723.134	47604.821	1.97
17	20723.452	47604.904	1.97
18	20723.770	47604.987	1.97
19	20724.088	47605.070	1.97
20	20724.406	47605.153	1.97
21	20724.724	47605.236	1.97
22	20725.042	47605.319	1.97
23	20725.360	47605.402	1.97
24	20725.678	47605.485	1.97
25	20726.000	47605.568	1.97
26	20726.318	47605.651	1.97
27	20726.636	47605.734	1.97
28	20726.954	47605.817	1.97
29	20727.272	47605.900	1.97
30	20727.590	47605.983	1.97
31	20727.908	47606.066	1.97
32	20728.226	47606.149	1.97
33	20728.544	47606.232	1.97
34	20728.862	47606.315	1.97
35	20729.180	47606.398	1.97
36	20729.500	47606.481	1.97
37	20729.818	47606.564	1.97
38	20730.136	47606.647	1.97
39	20730.454	47606.730	1.97
40	20730.772	47606.813	1.97
41	20731.090	47606.896	1.97
42	20731.408	47606.979	1.97
43	20731.726	47607.062	1.97
44	20732.044	47607.145	1.97
45	20732.362	47607.228	1.97
46	20732.680	47607.311	1.97
47	20733.000	47607.394	1.97
48	20733.318	47607.477	1.97
49	20733.636	47607.560	1.97
50	20733.954	47607.643	1.97
51	20734.272	47607.726	1.97
52	20734.590	47607.809	1.97
53	20734.908	47607.892	1.97
54	20735.226	47607.975	1.97
55	20735.544	47608.058	1.97
56	20735.862	47608.141	1.97
57	20736.180	47608.224	1.97
58	20736.500	47608.307	1.97
59	20736.818	47608.390	1.97
60	20737.136	47608.473	1.97
61	20737.454	47608.556	1.97
62	20737.772	47608.639	1.97
63	20738.090	47608.722	1.97
64	20738.408	47608.805	1.97
65	20738.726	47608.888	1.97
66	20739.044	47608.971	1.97
67	20739.362	47609.054	1.97
68	20739.680	47609.137	1.97
69	20739.998	47609.220	1.97
70	20740.316	47609.303	1.97
71	20740.634	47609.386	1.97
72	20740.952	47609.469	1.97
73	20741.270	47609.552	1.97
74	20741.588	47609.635	1.97
75	20741.906	47609.718	1.97
76	20742.224	47609.801	1.97
77	20742.542	47609.884	1.97
78	20742.860	47609.967	1.97
79	20743.178	47610.050	1.97
80	20743.496	47610.133	1.97
81	20743.814	47610.216	1.97
82	20744.132	47610.299	1.97
83	20744.450	47610.382	1.97
84	20744.768	47610.465	1.97
85	20745.086	47610.548	1.97
86	20745.404	47610.631	1.97
87	20745.722	47610.714	1.97
88	20746.040	47610.797	1.97
89	20746.358	47610.880	1.97
90	20746.676	47610.963	1.97
91	20746.994	47611.046	1.97
92	20747.312	47611.129	1.97
93	20747.630	47611.212	1.97
94	20747.948	47611.295	1.97
95	20748.266	47611.378	1.97
96	20748.584	47611.461	1.97
97	20748.902	47611.544	1.97
98	20749.220	47611.627	1.97
99	20749.538	47611.710	1.97
100	20749.856	47611.793	1.97

- Α 20718.74, 47603.502
- Β 20719.308, 47603.608
- Γ 20719.872, 47603.714
- Δ 20719.182, 47603.820
- Ε 20719.746, 47603.926

Handwritten signature and official blue stamp with Greek text and a date.

Additional official stamp and handwritten notes at the bottom of the page.

