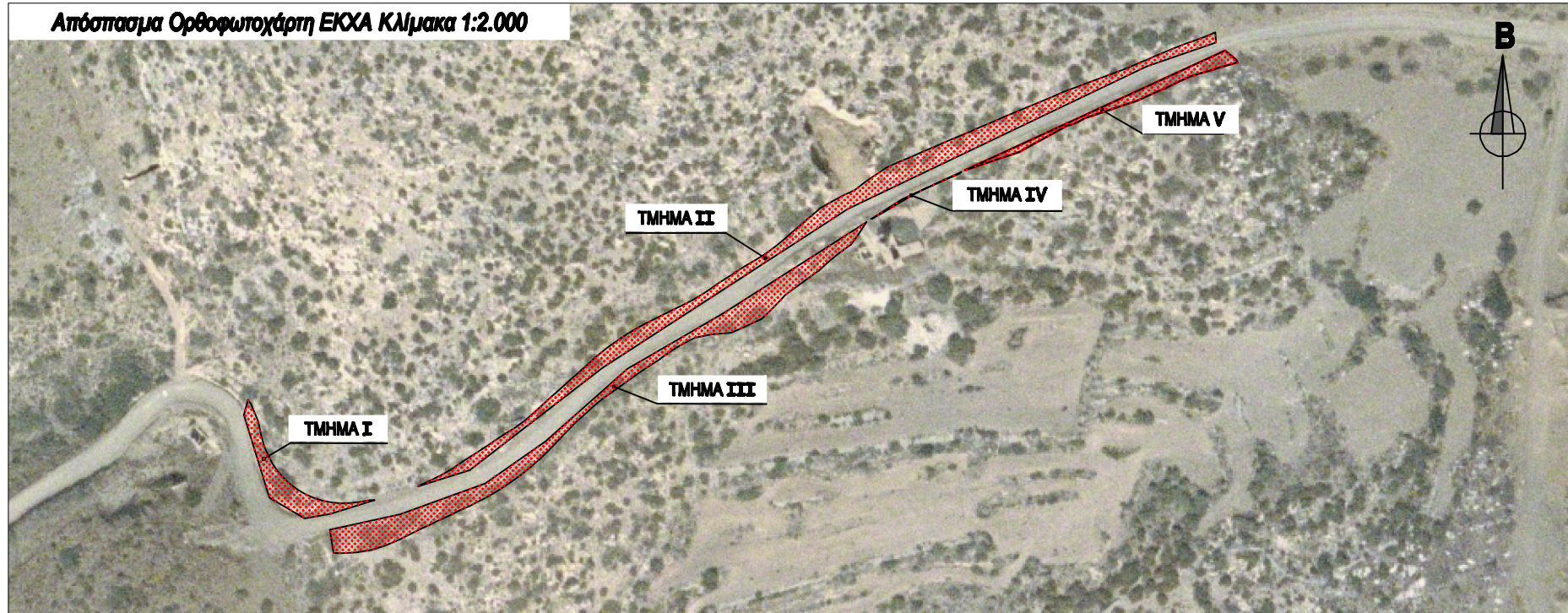



# ΤΟΠΟΓΡΑΦΙΚΟ ΔΙΑΓΡΑΜΜΑ Θέση «Ανάληψη» νήσου Αστυπάλαιας

Ανήκει στο αρ. πρωτ. 16873 / 8-3-2016 έγγραφο της Δ/νσης Δασών Δωδύσου



## ΥΠΟΜΝΗΜΑ

 = Τμήματα Ι, ΙΙ, ΙΙΙ, ΙV και V εμβαδού 243,77 τ.μ., 1.019,05 τ.μ., 887,78 τ.μ., 7,53 τ.μ. και 177,91 τ.μ. αντίστοιχα, που έχουν χαρακτηριστεί με την αρ. πρωτ. 8764/10/19-1-2011 πράξη της Δ/νσης Δασών Δωδύσου. Το παρόν συνοδεύεται από πίνακα συντεταγμένων των κορυφών των επιμέρους τμημάτων στο ΕΓΣΑ '87.

Ρόδος 26-2-2016

Ο Εισηγητής

Παπακωνσταντίνου Σπυρίδων  
Δασολόγος MSc

ΘΕΩΡΗΘΗΚΕ

Ρόδος 8-3-2016

Η Δ/ντρια Δασών Δωδύσου

Μπαλατσούκα Αικατερίνη  
Δασολόγος MSc

Ανήκει στο αρ. πρωτ. 16873 / 8 - 3 - 2016 απόφαση της Δ/σης Δασών Δωδ/σου

**ΠΙΝΑΚΑΣ ΣΥΝΤΕΤΑΓΜΕΝΩΝ ΚΟΡΥΦΩΝ (ΕΓΣΑ '87)**

ΤΜΗΜΑ I					
X=714250.7848	Y=4050570.4089	X=714250.7848	Y=4050570.4089	X=714250.7848	Y=4050570.4089
X=714249.4314	Y=4050570.3416	X=714249.4314	Y=4050570.3416	X=714249.4314	Y=4050570.3416
X=714246.4626	Y=4050569.8776	X=714246.4626	Y=4050569.8776	X=714246.4626	Y=4050569.8776
X=714243.5313	Y=4050569.4555	X=714243.5313	Y=4050569.4555	X=714243.5313	Y=4050569.4555
X=714240.5762	Y=4050569.3707	X=714240.5762	Y=4050569.3707	X=714240.5762	Y=4050569.3707
X=714237.7552	Y=4050569.5899	X=714237.7552	Y=4050569.5899	X=714237.7552	Y=4050569.5899
X=714234.8593	Y=4050570.1452	X=714234.8593	Y=4050570.1452	X=714234.8593	Y=4050570.1452
X=714232.0489	Y=4050571.0262	X=714232.0489	Y=4050571.0262	X=714232.0489	Y=4050571.0262
X=714229.3603	Y=4050572.2206	X=714229.3603	Y=4050572.2206	X=714229.3603	Y=4050572.2206
X=714226.9098	Y=4050573.6138	X=714226.9098	Y=4050573.6138	X=714226.9098	Y=4050573.6138
X=714224.5309	Y=4050575.3442	X=714224.5309	Y=4050575.3442	X=714224.5309	Y=4050575.3442
X=714222.3640	Y=4050577.3354	X=714222.3640	Y=4050577.3354	X=714222.3640	Y=4050577.3354
X=714220.4376	Y=4050579.5615	X=714220.4376	Y=4050579.5615	X=714220.4376	Y=4050579.5615
X=714218.8702	Y=4050581.9070	X=714218.8702	Y=4050581.9070	X=714218.8702	Y=4050581.9070
X=714217.5200	Y=4050584.5186	X=714217.5200	Y=4050584.5186	X=714217.5200	Y=4050584.5186
X=714216.3558	Y=4050587.2246	X=714216.3558	Y=4050587.2246	X=714216.3558	Y=4050587.2246
X=714215.4894	Y=4050590.0537	X=714215.4894	Y=4050590.0537	X=714215.4894	Y=4050590.0537
X=714215.3280	Y=4050591.0126	X=714215.3280	Y=4050591.0126	X=714215.3280	Y=4050591.0126
X=714214.3731	Y=4050595.1508	X=714214.3731	Y=4050595.1508	X=714214.3731	Y=4050595.1508
X=714212.0579	Y=4050600.5531	X=714212.0579	Y=4050600.5531	X=714212.0579	Y=4050600.5531
X=714211.1944	Y=4050601.7216	X=714211.1944	Y=4050601.7216	X=714211.1944	Y=4050601.7216
X=714209.9159	Y=4050597.0914	X=714209.9159	Y=4050597.0914	X=714209.9159	Y=4050597.0914
X=714217.9854	Y=4050571.1079	X=714217.9854	Y=4050571.1079	X=714217.9854	Y=4050571.1079
X=714229.0283	Y=4050564.7331	X=714229.0283	Y=4050564.7331	X=714229.0283	Y=4050564.7331
X=714236.9408	Y=4050566.0536	X=714236.9408	Y=4050566.0536	X=714236.9408	Y=4050566.0536
<b>Εμβαδόν τμήματος I = 243,77 τ.μ.</b>					

ΤΜΗΜΑ III					
X=714359.9044	Y=4050628.7442	X=714293.0654	Y=4050575.6628	X=714349.0153	Y=4050620.1355
X=714330.0044	Y=4050611.4668	X=714293.1420	Y=4050575.7151	X=714351.4031	Y=4050621.3267
X=714304.4614	Y=4050588.7692	X=714296.6216	Y=4050578.2269	X=714356.4037	Y=4050622.2496
X=714285.4895	Y=4050575.6338	X=714299.9696	Y=4050580.9082	X=714362.5155	Y=4050622.8573
X=714258.8396	Y=4050565.8966	X=714303.1779	Y=4050583.7521	X=714366.6191	Y=4050624.5548
X=714236.8886	Y=4050561.0802	X=714303.2456	Y=4050583.8153	X=714370.6505	Y=4050626.4657
X=714238.0385	Y=4050553.9254	X=714306.0383	Y=4050586.6884	X=714372.0392	Y=4050627.1827
X=714240.3748	Y=4050553.8068	X=714308.8310	Y=4050589.5615	X=714375.3223	Y=4050630.2496
X=714245.0988	Y=4050554.0413	X=714311.6237	Y=4050592.4346	X=714378.4215	Y=4050633.4566
X=714249.7624	Y=4050554.8126	X=714313.6060	Y=4050594.4739	X=714379.4594	Y=4050634.6074
X=714254.2937	Y=4050556.1422	X=714316.5520	Y=4050597.1797	X=714382.7050	Y=4050636.9610
X=714258.4294	Y=4050557.9602	X=714319.5013	Y=4050599.8818	X=714385.9507	Y=4050639.3146
X=714262.0026	Y=4050559.7614	X=714322.6070	Y=4050602.4132	X=714389.1963	Y=4050641.6682
X=714265.6102	Y=4050561.4895	X=714324.9572	Y=4050604.0509	X=714389.9261	Y=4050642.1974
X=714269.2310	Y=4050563.1894	X=714328.0524	Y=4050606.1532	X=714392.9166	Y=4050644.8569
X=714270.1572	Y=4050563.6242	X=714331.0201	Y=4050608.3669	X=714395.9553	Y=4050647.4586
X=714273.7673	Y=4050565.3469	X=714333.4507	Y=4050610.1476	X=714399.2078	Y=4050649.8040
X=714277.3774	Y=4050567.0695	X=714336.5532	Y=4050612.1646	X=714399.9704	Y=4050650.2938
X=714280.9875	Y=4050568.7922	X=714339.6573	Y=4050614.1982	X=714402.1452	Y=4050653.3278
X=714281.9110	Y=4050569.2329	X=714342.1478	Y=4050615.9769	X=714404.3129	Y=4050656.5713
X=714285.7364	Y=4050571.1902	X=714345.5032	Y=4050618.2142	X=714404.9218	Y=4050657.5038
X=714289.4576	Y=4050573.3354				
<b>Εμβαδόν τμήματος III = 887,78 τ.μ.</b>					

ΤΜΗΜΑ ΙΙ					
X=714492.7234	Y=4050706.2582	X=714333.9163	Y=4050624.6847	X=714422.3600	Y=4050679.3775
X=714410.9721	Y=4050667.2504	X=714337.0222	Y=4050626.3173	X=714426.0314	Y=4050680.9654
X=714399.0071	Y=4050661.5412	X=714340.6038	Y=4050628.0985	X=714429.7027	Y=4050682.5533
X=714322.1290	Y=4050611.7681	X=714344.1853	Y=4050629.8797	X=714433.3829	Y=4050684.1231
X=714280.6546	Y=4050579.8061	X=714346.5601	Y=4050631.0608	X=714437.0623	Y=4050685.6924
X=714264.5030	Y=4050574.7247	X=714350.1321	Y=4050632.8612	X=714440.7416	Y=4050687.2618
X=714264.8594	Y=4050574.8931	X=714353.5953	Y=4050634.8812	X=714444.4210	Y=4050688.8312
X=714268.4810	Y=4050576.5913	X=714355.8045	Y=4050636.3963	X=714448.0994	Y=4050690.4001
X=714272.0736	Y=4050578.3513	X=714358.8119	Y=4050638.5062	X=714451.7860	Y=4050691.9529
X=714275.5259	Y=4050580.4096	X=714361.8775	Y=4050640.4531	X=714455.4726	Y=4050693.5056
X=714276.3847	Y=4050580.9878	X=714362.9494	Y=4050641.1282	X=714459.1591	Y=4050695.0583
X=714279.3979	Y=4050583.0890	X=714365.9947	Y=4050643.1061	X=714462.8457	Y=4050696.6110
X=714282.4606	Y=4050585.0225	X=714369.1391	Y=4050644.9908	X=714466.5323	Y=4050698.1638
X=714285.4909	Y=4050586.9887	X=714370.2717	Y=4050645.6244	X=714470.2844	Y=4050699.5678
X=714285.5553	Y=4050587.0328	X=714373.6712	Y=4050647.7935	X=714474.0355	Y=4050700.9715
X=714288.5803	Y=4050589.0150	X=714376.8447	Y=4050650.2336	X=714477.7867	Y=4050702.3752
X=714291.5901	Y=4050591.0500	X=714379.9311	Y=4050652.7782	X=714481.5379	Y=4050703.7790
X=714294.7413	Y=4050592.9817	X=714380.6251	Y=4050653.3503	X=714485.2881	Y=4050705.1823
X=714294.8112	Y=4050593.0225	X=714383.6561	Y=4050655.9612	X=714488.9743	Y=4050706.7358
X=714298.0723	Y=4050595.3843	X=714386.6872	Y=4050658.5722	X=714490.6436	Y=4050707.4393
X=714301.0951	Y=4050598.0062	X=714389.7182	Y=4050661.1831	X=714492.6606	Y=4050708.2893
X=714304.0260	Y=4050600.7285	X=714390.3997	Y=4050661.7701	X=714494.8616	Y=4050709.2169
X=714306.1063	Y=4050602.6607	X=714394.1331	Y=4050663.9750	X=714498.5499	Y=4050710.7656
X=714309.0892	Y=4050605.3262	X=714397.9480	Y=4050665.9733	X=714502.2382	Y=4050712.3144
X=714312.0721	Y=4050607.9917	X=714401.2875	Y=4050667.5257	X=714504.4405	Y=4050713.2391
X=714315.0550	Y=4050610.6572	X=714404.6791	Y=4050670.1260	X=714508.3905	Y=4050714.6191
X=714317.1723	Y=4050612.5492	X=714408.1993	Y=4050672.6097	X=714510.7899	Y=4050715.4178
X=714320.3950	Y=4050615.4005	X=714411.3461	Y=4050674.6137	X=714512.3105	Y=4050716.0528
X=714323.7576	Y=4050618.0882	X=714415.0174	Y=4050676.2016	X=714514.1056	Y=4050716.7991
X=714326.5935	Y=4050620.1514	X=714418.6887	Y=4050677.7896	X=714514.4105	Y=4050713.6741
X=714330.1979	Y=4050622.5094				

**Εμβαδόν τμήματος ΙΙ = 1.019,05 τ.μ.**

ΤΜΗΜΑ ΙV					
X=714406.4369	Y=4050658.4717	X=714430.3508	Y=4050671.0012	X=714415.9672	Y=4050663.9538
X=714416.0553	Y=4050664.6165	X=714426.6928	Y=4050669.3827	X=714413.2388	Y=4050662.2321
X=714434.6745	Y=4050673.1693	X=714423.0347	Y=4050667.7642	X=714410.0261	Y=4050660.3865
X=714434.0089	Y=4050672.6197	X=714419.4308	Y=4050666.0209	X=714406.8207	Y=4050658.5427

**Εμβαδόν τμήματος ΙV = 7,53 τ.μ.**

ΤΜΗΜΑ V					
X=714435.7563	Y=4050673.6662	X=714499.0150	Y=4050699.6359	X=714467.2125	Y=4050687.3788
X=714517.2193	Y=4050711.0869	X=714496.8346	Y=4050698.6607	X=714466.9181	Y=4050687.2169
X=714520.7687	Y=4050708.1979	X=714493.1830	Y=4050697.0274	X=714463.3975	Y=4050685.2812
X=714521.0495	Y=4050707.3358	X=714489.5313	Y=4050695.3941	X=714459.8770	Y=4050683.3455
X=714520.5890	Y=4050707.3147	X=714485.7191	Y=4050694.1336	X=714456.3564	Y=4050681.4098
X=714519.3617	Y=4050706.9826	X=714481.9060	Y=4050692.8728	X=714452.8359	Y=4050679.4741
X=714515.7746	Y=4050705.9079	X=714478.0929	Y=4050691.6120	X=714449.0372	Y=4050678.1824
X=714512.1916	Y=4050704.7912	X=714474.2798	Y=4050690.3512	X=714445.2377	Y=4050676.8904
X=714508.5374	Y=4050703.7884	X=714473.3924	Y=4050690.0578	X=714441.4381	Y=4050675.5983
X=714506.2873	Y=4050702.9738	X=714470.6983	Y=4050688.5537	X=714437.6385	Y=4050674.3063
X=714502.6093	Y=4050701.4013				

**Εμβαδόν τμήματος V = 177,91 τ.μ.**