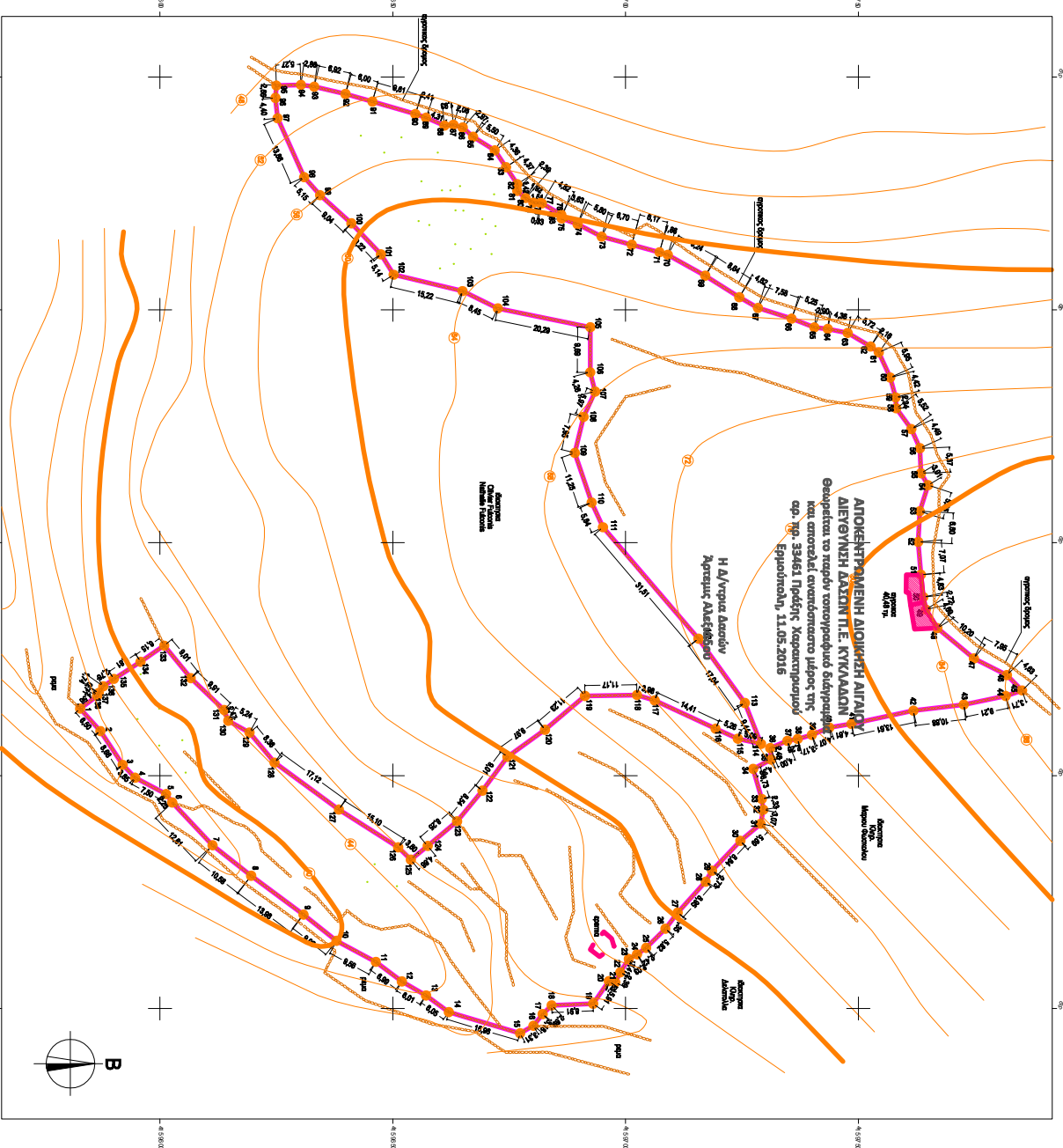


μ	X	Y
1	597486.0119	415962.0469
2	597486.0665	415961.1982
4	597500.4656	415959.8693
5	597505.7719	415960.2864
6	597514.8488	415960.6267
7	597521.1481	415961.2833
8	597528.6304	415961.9759
9	597535.6880	415962.8297
10	597542.9729	415963.8073
11	597550.4819	415964.9264
12	597558.2301	415966.1982
13	597566.2027	415967.6510
14	597574.3289	415969.3399
15	597582.6119	415971.2833
16	597591.1599	415973.4988
17	597600.0000	415975.9988
18	597609.1818	415978.7988
19	597618.7056	415981.9000
20	597628.5727	415985.3267
21	597638.7988	415989.0811
22	597649.3811	415993.1811
23	597660.3267	415997.6311
24	597671.6311	416002.4311
25	597683.2988	416007.5811
26	597695.3267	416013.0811
27	597707.7181	416018.9311
28	597720.4727	416025.1311
29	597733.5988	416031.6811
30	597747.0988	416038.5811
31	597760.9665	416045.8311
32	597775.1988	416053.4311
33	597789.7988	416061.3811
34	597804.7665	416069.6811
35	597820.1000	416078.3311
36	597835.8000	416087.3311
37	597851.8665	416096.6811
38	597868.2988	416106.3811
39	597885.1000	416116.4311
40	597902.2727	416126.8311
41	597919.8181	416137.5811
42	597937.7272	416148.6811
43	597956.0000	416160.1311
44	597974.6311	416171.9311
45	597993.6181	416184.0811
46	598012.9665	416196.5811
47	598032.6811	416209.4311
48	598052.7665	416222.6311
49	598073.2181	416236.1811
50	598094.0311	416250.0811
51	598115.2181	416264.3311
52	598136.7665	416278.9311
53	598158.6811	416293.8811
54	598180.9665	416309.1811
55	598203.6181	416324.8311
56	598226.6311	416340.8311
57	598250.0000	416357.1811
58	598273.7272	416373.8811
59	598297.8181	416390.9311
60	598322.2727	416408.3311
61	598347.0988	416426.0811
62	598372.2988	416444.1811
63	598397.8665	416462.6311
64	598423.8000	416481.4311
65	598449.1000	416500.5811
66	598474.7665	416520.0811
67	598500.8000	416539.9311
68	598527.2181	416560.1311
69	598554.0000	416580.6811
70	598581.1599	416601.5811
71	598608.6811	416622.8311
72	598636.5811	416644.4311
73	598664.8311	416666.3811
74	598693.4311	416688.6811
75	598722.3811	416711.3311
76	598751.6811	416734.3311
77	598781.3311	416757.6811
78	598811.3311	416781.3811
79	598841.6811	416805.3811
80	598872.3811	416829.6811
81	598903.3311	416854.2811
82	598934.5811	416879.1811
83	598966.0811	416904.3811
84	598997.8311	416929.8811
85	599029.8311	416955.6811
86	599062.0811	416981.7811
87	599094.5811	417008.1811
88	599127.3311	417034.8811
89	599160.3311	417061.8811
90	599193.5811	417089.1811
91	599227.0811	417116.6811
92	599260.8311	417144.3811
93	599294.8311	417172.2811
94	599329.0811	417200.3811
95	599363.5811	417228.6811
96	599398.3311	417257.1811
97	599433.3311	417285.8811
98	599468.5811	417314.7811
99	599504.0811	417343.8811
100	599539.8311	417373.1811



μ	X	Y
101	602988.0000	415962.4669
102	602993.4669	415961.1680
103	602998.9338	415960.0757
104	602998.6340	415962.5693
105	602993.7931	415962.4451
106	602991.5180	415962.4174
107	602991.5480	415963.4599
108	602991.5480	415964.5024
109	602991.5480	415965.5449
110	602991.5480	415966.5874
111	602991.5480	415967.6299
112	602991.5480	415968.6724
113	602991.5480	415969.7149
114	602991.5480	415970.7574

μ	X	Y
115	602992.5917	415971.8000
116	602993.6342	415972.8425
117	602994.6767	415973.8850
118	602995.7192	415974.9275
119	602996.7617	415975.9700
120	602997.8042	415977.0125
121	602998.8467	415978.0550
122	602999.8892	415979.0975
123	603000.9317	415980.1400
124	603001.9742	415981.1825
125	603003.0167	415982.2250
126	603004.0592	415983.2675
127	603005.1017	415984.3100
128	603006.1442	415985.3525

μ	X	Y
129	602998.0000	415986.3950
130	602999.0425	415987.4375
131	603000.0850	415988.4800
132	603001.1275	415989.5225
133	603002.1700	415990.5650
134	603003.2125	415991.6075
135	603004.2550	415992.6500
136	603005.2975	415993.6925
137	603006.3400	415994.7350
138	603007.3825	415995.7775

1. 1:3,456,7,8,9,10,11,12,13,14,15,16,17,18,19,20,21,22,23,24,25-26
 27,28,29,30,31,32,33,34,35,36,37,38,39,40,41,42,43,44,45,46,47,48,49,50,51,52,53,54,55,56,57,58,59
 60,61,62,63,64,65,66,67,68,69,70,71,72,73,74,75,76,77,78,79,80,81,82,83,84,85,86,87,88,89,90
 91,92,93,94,95,96,97,98,99,100,101,102,103,104,105,106,107,108,109,110,111,112,113,114,115,116
 117,118,119,120,121,122,123,124,125,126,127,128,129,130,131,132,133,134,135,136,137,138,139
 140,141,142,143,144,145,146,147,148,149,150,151,152,153,154,155,156,157,158,159,160,161,162,163,164,165,166,167,168,169,170,171,172,173,174,175,176,177,178,179,180,181,182,183,184,185,186,187,188,189,190,191,192,193,194,195,196,197,198,199,200

2015 / 1:500

9.1456 / F:210719723 / 69776408
 2.3.84200 / F:228023553 / 6944979312

1. 230 μ
 2. 41 μ
 3. 14 μ
 4. 14 μ
 5. 1023 μ
 6. 87 μ
 7. 133783 μ
 8. 1823 μ