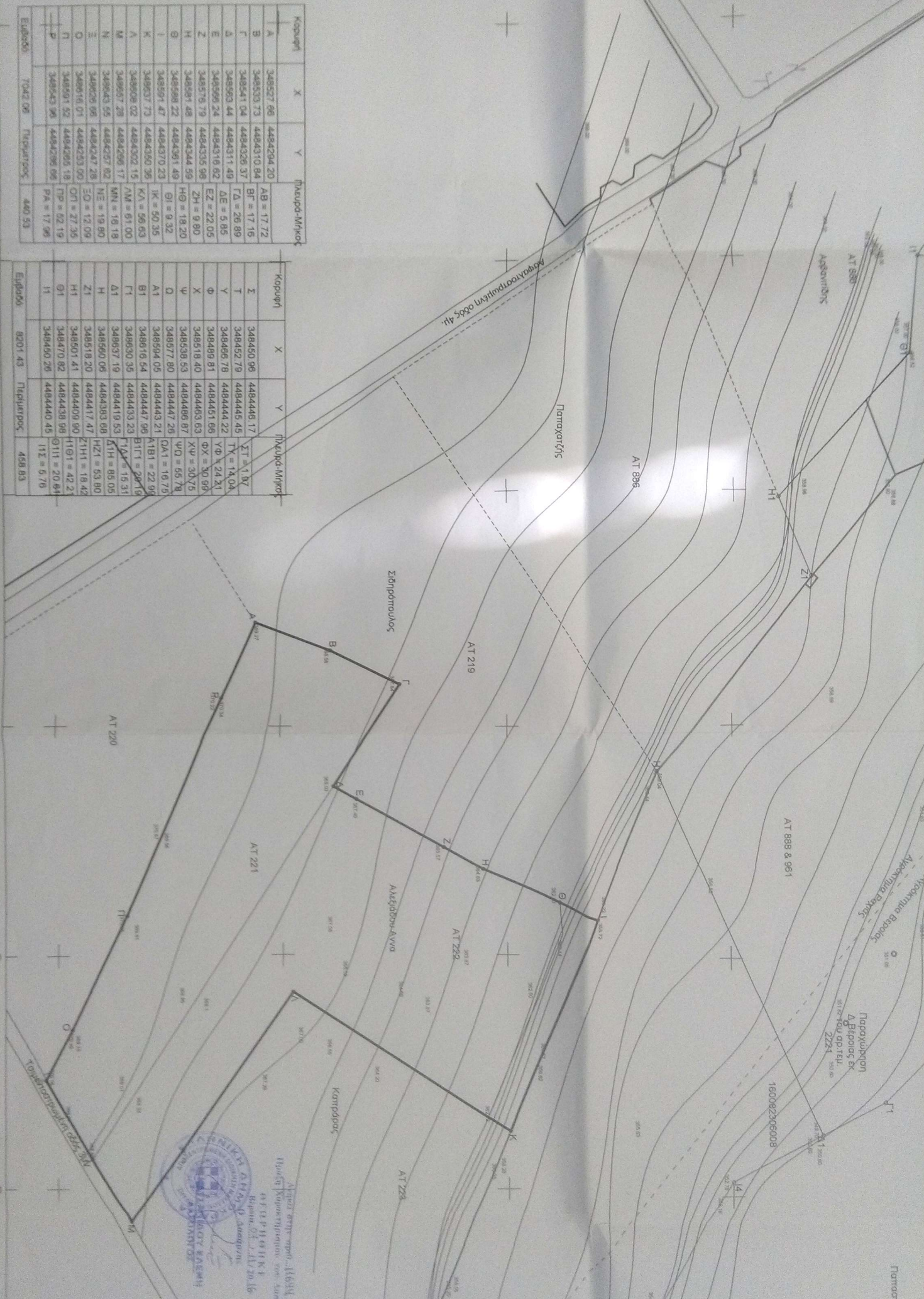


Κορυφή	X	Y	Πλευρά-Μήκος
A	348527.66	4494294.20	AB = 17.72
B	348533.73	4494310.84	BF = 17.16
C	348541.04	4494326.37	FD = 26.89
D	348593.24	4494311.49	DE = 5.85
E	348596.24	4494316.82	EZ = 22.05
Z	348579.19	4494335.98	ZH = 9.80
H	348581.48	4494344.59	HG = 18.20
G	348588.22	4494361.49	GI = 9.32
I	348591.47	4494370.23	IK = 50.35
K	348537.73	4494350.36	KJ = 56.63
J	348509.82	4494302.15	JN = 61.00
N	348567.28	4494296.17	NI = 19.80
M	348543.55	4494257.82	NO = 12.09
O	348516.01	4494233.00	OP = 27.26
P	348501.52	4494205.18	PA = 17.96

Κορυφή	X	Y	Πλευρά-Μήκος
Σ	348450.99	4484446.17	ΣΤ = 1.87
T	348452.79	4484445.45	ΤΥ = 14.04
Υ	348466.78	4484444.22	ΥΘ = 24.21
Φ	348489.81	4484451.66	ΦΧ = 30.99
X	348518.40	4484463.63	ΧΨ = 30.75
Ψ	348538.53	4484488.87	ΨΩ = 66.78
Ω	348577.80	4484447.26	ΩΑ1 = 16.75
A1	348594.05	4484443.21	A1B1 = 22.95
B1	348616.54	4484447.96	B1Γ1 = 28.16
Γ1	348630.35	4484433.23	Γ1Δ1 = 15.31
Δ1	348637.19	4484419.53	Δ1Η = 85.05
H	348590.08	4484383.88	ΗΖ1 = 63.80
Z1	348518.20	4484417.47	Ζ1Η1 = 18.42
H1	348501.41	4484405.90	Η1Θ1 = 42.2
Θ1	348470.82	4484438.98	Θ1Ι1 = 20.84
Ι1	348450.26	4484440.48	Ι1Σ = 6.78

348400
348450
348500
348550
348600
348650



ΕΛΛΗΝΙΚΗ ΔΗΜΟΚΡΑΤΙΑ
ΥΠΟΥΡΓΕΙΟ ΠΑΙΔΕΙΑΣ, ΕΡΕΥΝΑΣ ΚΑΙ ΘΡΗΣΚΕΥΜΑΤΩΝ
ΙΝΣΤΙΤΟΥΤΟ ΤΕΧΝΟΛΟΓΙΑΣ ΥΠΟΛΟΓΙΣΤΩΝ ΚΑΙ ΕΚΔΟΣΕΩΝ ΔΙΔΑΚΤΙΚΩΝ ΒΙΒΛΙΩΝ (ΙΤΥΣΣΕ)