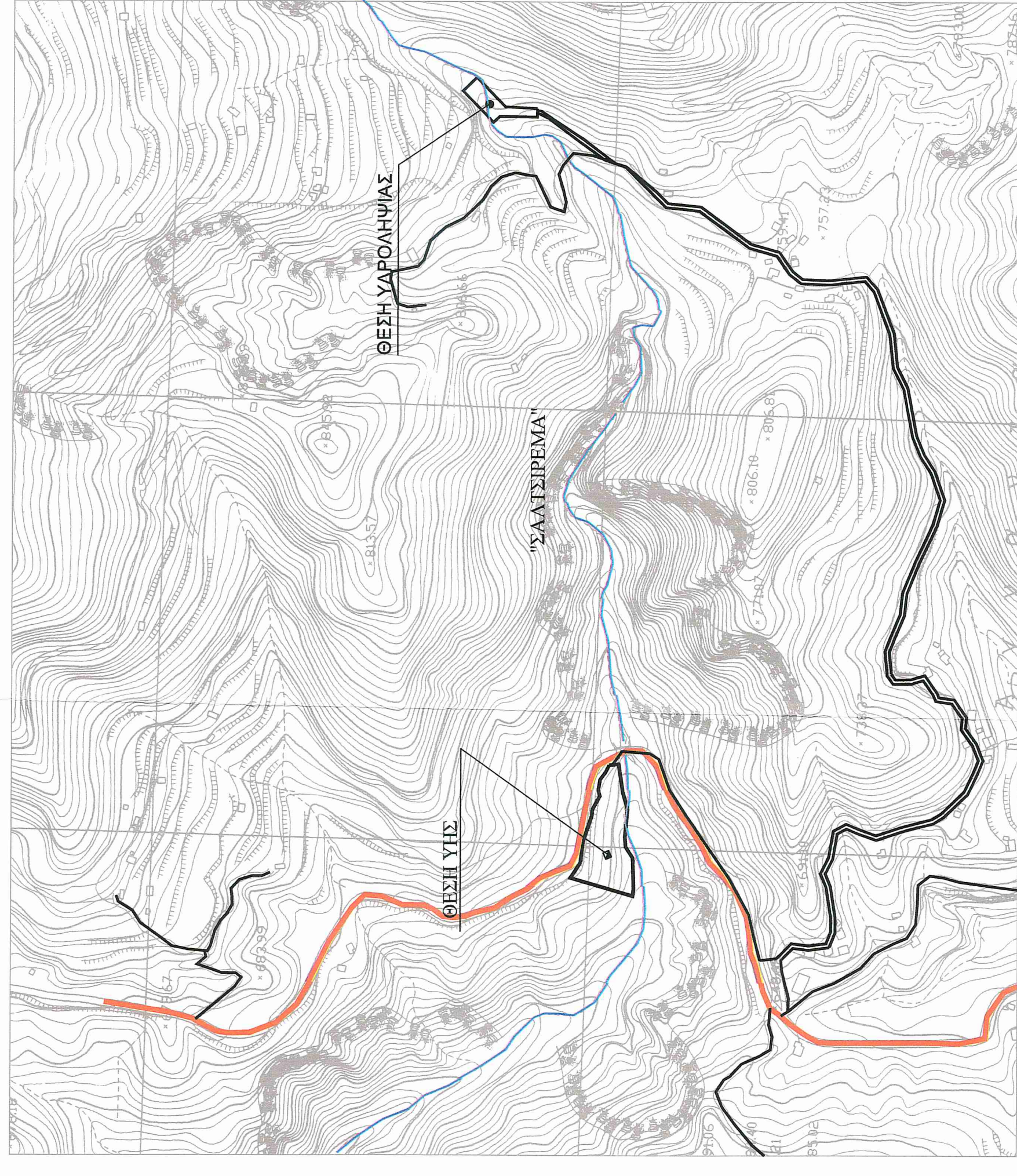


**ΑΙΧΜΟΝΗ ΧΑΡΑΚΤΗΡΙΣΤΙΚΩΝ ΣΗΜΕΙΩΝ ΜΕΣΩ ΑΠΟΣΤΑΣΜΑΤΟΣ ΧΑΡΤΗΣ ΓΥΣ ΠΙΣΤΑΡΙΟΥ 5:08 2 ΚΩΔΙΚΟΣ 1/5000**



**ΣΥΝΤΕΤΛΜΕΝΕΣ ΚΟΡΥΦΕΣ ΚΑΤΑΛΗΨΗΣ ΑΓΡΟΥ ΚΑΤΑ ΜΙΚΡΟΣ ΔΗΜΟΤΙΚΗΣ ΟΔΟΥ ΠΡΟΣ ΚΟΝΚΑ ΑΓΙΑΝΤΩΝ(ΑΝΑΝΗ ΣΤΟ ΟΡΙΟ ΤΗΣ ΟΔΟΥ-ΠΛΑΤΟΣ 2,00μ. - Ε)**

ΣΗΜΕΙΟ	X	Y	Z	ΕΠΙΜΕΤΡΟ	X	Y	Z	ΕΠΙΜΕΤΡΟ	X	Y	Z	ΕΠΙΜΕΤΡΟ	X	Y	Z	ΕΠΙΜΕΤΡΟ	
52	24862.063	437367.889	63	24862.602	437364.354	94	24863.441	437350.533	125	24867.390	437362.693	156	24867.390	437351.523	187	24867.390	437362.693
53	24864.960	437367.250	64	24863.175	437360.340	95	24869.659	437350.236	126	24867.013	437360.071	157	24867.013	437352.722	188	24867.013	437360.071
54	24868.001	437366.327	65	24862.739	437360.217	96	24868.217	437350.236	127	24868.217	437350.236	158	24868.217	437350.236	189	24868.217	437360.071
55	24868.636	437366.258	66	24863.516	437358.281	97	24868.636	437350.656	128	24869.659	437350.656	159	24869.659	437350.656	190	24869.659	437360.071
56	24868.643	437362.774	67	24862.550	437358.165	98	24868.643	437350.656	129	24869.659	437350.656	160	24869.659	437350.656	191	24869.659	437360.071
57	24865.678	437362.832	68	24862.751	437358.437	99	24868.643	437350.656	130	24869.659	437350.656	161	24869.659	437350.656	192	24869.659	437360.071
58	24852.791	437369.161	69	24862.229	437355.236	100	24868.643	437350.656	131	24869.659	437350.656	162	24869.659	437350.656	193	24869.659	437360.071
59	24852.791	437369.161	70	24862.442	437355.047	101	24868.643	437350.656	132	24869.659	437350.656	163	24869.659	437350.656	194	24869.659	437360.071
60	24858.800	437362.743	71	24863.949	437353.850	102	24868.643	437350.656	133	24869.659	437350.656	164	24869.659	437350.656	195	24869.659	437360.071
61	24858.800	437362.743	72	24863.949	437353.850	103	24868.643	437350.656	134	24869.659	437350.656	165	24869.659	437350.656	196	24869.659	437360.071
62	24858.800	437362.743	73	24863.949	437353.850	104	24868.643	437350.656	135	24869.659	437350.656	166	24869.659	437350.656	197	24869.659	437360.071
			74	24862.017	437345.004	105	24868.643	437350.656	136	24869.659	437350.656	167	24869.659	437350.656	198	24869.659	437360.071
			75	24862.017	437345.004	106	24868.643	437350.656	137	24869.659	437350.656	168	24869.659	437350.656	199	24869.659	437360.071
			76	24862.017	437345.004	107	24868.643	437350.656	138	24869.659	437350.656	169	24869.659	437350.656	200	24869.659	437360.071
			77	24862.017	437345.004	108	24868.643	437350.656	139	24869.659	437350.656	170	24869.659	437350.656			
			78	24862.017	437345.004	109	24868.643	437350.656	140	24869.659	437350.656	171	24869.659	437350.656			
			79	24862.017	437345.004	110	24868.643	437350.656	141	24869.659	437350.656	172	24869.659	437350.656			
			80	24862.017	437345.004	111	24868.643	437350.656	142	24869.659	437350.656	173	24869.659	437350.656			
			81	24862.017	437345.004	112	24868.643	437350.656	143	24869.659	437350.656	174	24869.659	437350.656			
			82	24862.017	437345.004	113	24868.643	437350.656	144	24869.659	437350.656	175	24869.659	437350.656			
			83	24862.017	437345.004	114	24868.643	437350.656	145	24869.659	437350.656	176	24869.659	437350.656			
			84	24862.017	437345.004	115	24868.643	437350.656	146	24869.659	437350.656	177	24869.659	437350.656			
			85	24862.017	437345.004	116	24868.643	437350.656	147	24869.659	437350.656	178	24869.659	437350.656			
			86	24862.017	437345.004	117	24868.643	437350.656	148	24869.659	437350.656	179	24869.659	437350.656			
			87	24862.017	437345.004	118	24868.643	437350.656	149	24869.659	437350.656	180	24869.659	437350.656			
			88	24862.017	437345.004	119	24868.643	437350.656	150	24869.659	437350.656	181	24869.659	437350.656			
			89	24862.017	437345.004	120	24868.643	437350.656	151	24869.659	437350.656	182	24869.659	437350.656			
			90	24862.017	437345.004	121	24868.643	437350.656	152	24869.659	437350.656	183	24869.659	437350.656			
			91	24862.017	437345.004	122	24868.643	437350.656	153	24869.659	437350.656	184	24869.659	437350.656			
			92	24862.017	437345.004	123	24868.643	437350.656	154	24869.659	437350.656	185	24869.659	437350.656			
			93	24862.017	437345.004	124	24868.643	437350.656	155	24869.659	437350.656	186	24869.659	437350.656			

**ΣΥΝΤΕΤΛΜΕΝΕΣ ΚΟΡΥΦΕΣ ΚΑΤΑΛΗΨΗΣ ΑΓΡΟΥ ΚΑΤΑ ΜΙΚΡΟΣ ΔΗΜΟΤΙΚΗΣ ΟΔΟΥ ΠΡΟΣ ΚΟΝΚΑ ΑΓΙΑΝΤΩΝ(ΑΝΑΝΗ ΣΤΟ ΟΡΙΟ ΤΗΣ ΟΔΟΥ-ΠΛΑΤΟΣ 2,00μ. - Ε)**

ΣΗΜΕΙΟ	X	Y	Z	ΕΠΙΜΕΤΡΟ	X	Y	Z	ΕΠΙΜΕΤΡΟ	X	Y	Z	ΕΠΙΜΕΤΡΟ	X	Y	Z	ΕΠΙΜΕΤΡΟ	
33	24849.623	437366.328	2	24870.237	437366.328	33	24849.623	437366.328	64	24850.339	437366.328	95	24851.055	437366.328	126	24851.771	437366.328
34	24849.623	437366.328	3	24870.237	437366.328	34	24849.623	437366.328	65	24850.339	437366.328	96	24851.055	437366.328	127	24851.771	437366.328
35	24849.623	437366.328	4	24870.237	437366.328	35	24849.623	437366.328	66	24850.339	437366.328	97	24851.055	437366.328	128	24851.771	437366.328
36	24849.623	437366.328	5	24870.237	437366.328	36	24849.623	437366.328	67	24850.339	437366.328	98	24851.055	437366.328	129	24851.771	437366.328
37	24849.623	437366.328	6	24870.237	437366.328	37	24849.623	437366.328	68	24850.339	437366.328	99	24851.055	437366.328	130	24851.771	437366.328
38	24849.623	437366.328	7	24870.237	437366.328	38	24849.623	437366.328	69	24850.339	437366.328	100	24851.055	437366.328	131	24851.771	437366.328
39	24849.623	437366.328	8	24870.237	437366.328	39	24849.623	437366.328	70	24850.339	437366.328	101	24851.055	437366.328	132	24851.771	437366.328
40	24849.623	437366.328	9	24870.237	437366.328	40	24849.623	437366.328	71	24850.339	437366.328	102	24851.055	437366.328	133	24851.771	437366.328
41	24849.623	437366.328	10	24870.237	437366.328	41	24849.623	437366.328	72	24850.339	437366.328	103	24851.055	437366.328	134	24851.771	437366.328
42	24849.623	437366.328	11	24870.237	437366.328	42	24849.623	437366.328	73	24850.339	437366.328	104	24851.055	437366.328	135	24851.771	437366.328
43	24849.623	437366.328	12	24870.237	437366.328	43	24849.623	437366.328	74	24850.339	437366.328	105	24851.055	437366.328	136	24851.771	437366.328
44	24849.623	437366.328	13	24870.237	437366.328	44	24849.623	437366.328	75	24850.339	437366.328	106	24851.055	437366.328	137	24851.771	437366.328
45	24849.623	437366.328	14	24870.237	437366.328	45	24849.623	437366.328	76	24850.339	437366.328	107	24851.055	437366.328	138	24851.771	437366.328
46	24849.623	437366.328	15	24870.237	437366.328	46	24849.623	437366.328	77	24850.339	437366.328	108	24851.055	437366.328	139	24851.771	437366.328
47	24849.623	437366.328	16	24870.237	437366.328	47	24849.623	437366.328	78	24850.339	437366.328	109	24851.055	437366.328	140	24851.771	437366.328
48	24849.623	437366.328	17	24870.237	437366.328	48	24849.623	437366.328	79	24850.339	437366.328	110	24851.055	437366.328	141	24851.771	437366.328
49	24849.623	437366.328	18	24870.237	437366.328	49	24849.623	437366.328	80	24850.339	437366.328	111	24851.055	437366.328	142	24851.771	437366.328
50	24849.623	437366.328	19	24870.237	437366.328	50	24849.623	437366.328	81	24850.339	437366.328	112	24851.055	437366.328	143	24851.771	437366.328
51	24849.623	437366.328	20	24870.237	437366.328	51	24849.623	437366.328	82	24850.339	437366.328	113	24851.055	437366.328	144	24851.771	437366.328
52	24849.623	437366.328	21	24870.237	437366.328	52	24849.623	437366.328	83	24850.339	437366.328	114	24851.055	437366.328	145	24851.771	437366.328
53	24849.623	437366.328	22	24870.237	437366.328	53	24849.623	437366.328	84	24850.339	437366.328	115	24851.055	437366.328	146	24851.771	437366.328
54	24849.623	437366.328	23	24870.237	437366.328	54	24849.623	437366.328	85	24850.339	437366.328	116	24851.055	437366.328	147	24851.771	437366.328
55	24849.623	437366.328	24	24870.237	437366.328	55	24849.623	437366.328	86	24850.339	437366.328	117	24851.055	437366.328	148	24851.771	437366.328
56	24849.623	437366.328	25	24870.237	437366.328	56	24849.623	437366.328	87	24850.339	437366.328	118	24851.055	437366.328	149	24851.771	437366.328
57	24849.623	437366.328	26	24870.237	437366.328	57	248										