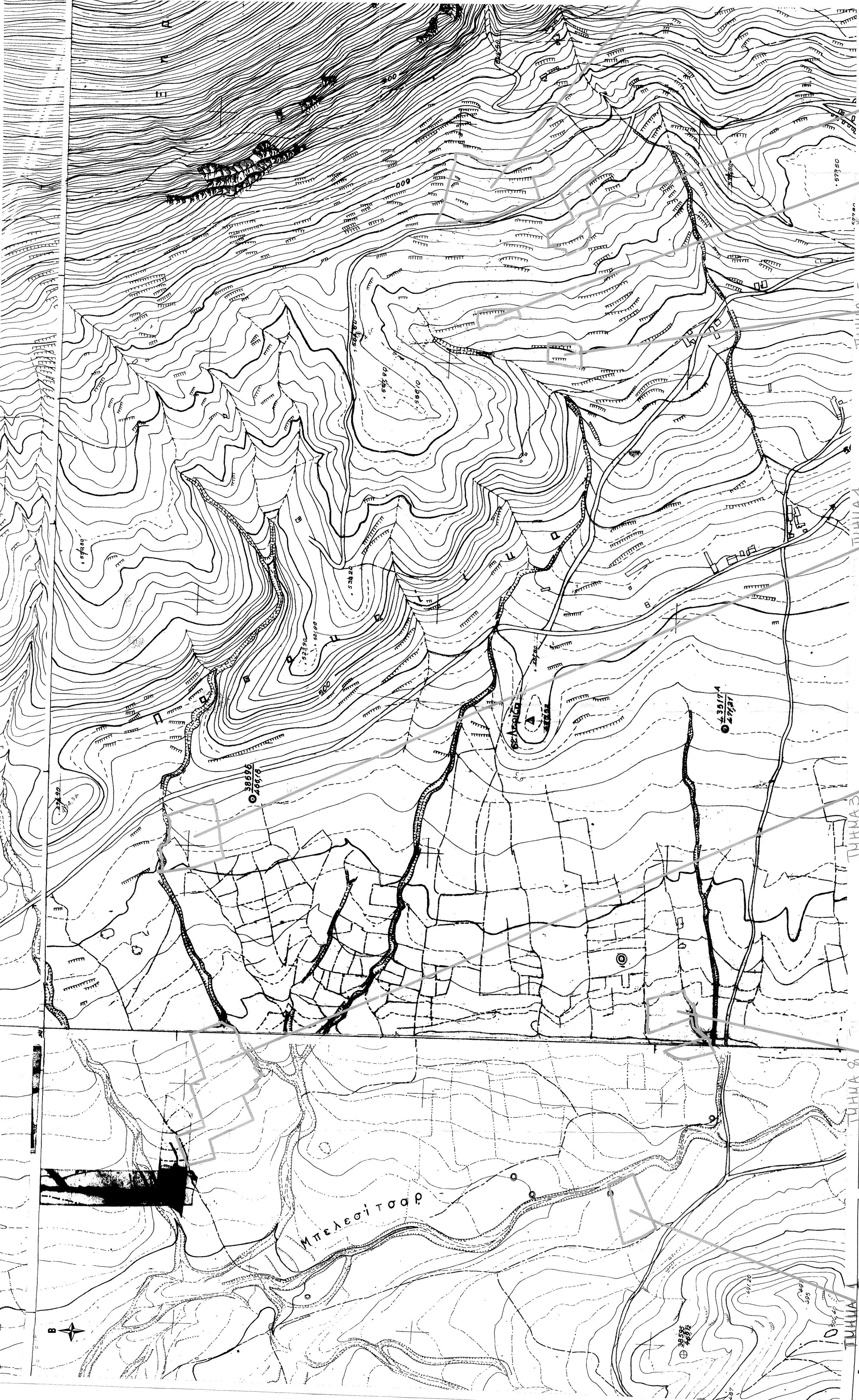


ΑΠΟΤΥΠΩΣΗ ΣΕ ΧΑΡΤΗ Γ.Υ.Σ. ΚΛ. 1:5.000

ΑΠΟΤΥΠΩΣΗ ΣΕ ΥΠΟΒΑΘΡΟ GOOGLE MAPS ΚΛ. 1:5.000



ΑΡ. ΠΥΛΩΝ

Συντεταγμένες Μέρους (ΕΓΓΑ Β7)  
Ε-22.953.91

Σημείο	X	Y	Απόσταση σημείων (v-y-1)
A	343.772.3540	4.258.408.7249	41,08
B	343.787.2371	4.258.370.4523	34,65
C	343.800.0205	4.258.340.1117	113,86
D	343.906.3258	4.258.389.7762	54,30
E	343.858.4274	4.258.440.9765	120,46
F	343.772.3540	4.258.408.7249	120,46

Συντεταγμένες Νότια (ΕΓΓΑ Β7)  
Ε-27.288.27

Σημείο	X	Y	Απόσταση σημείων (v-y-1)
A	344.078.1888	4.259.314.9061	4,00
B	344.081.9696	4.259.316.2058	32,76
C	344.096.3219	4.259.306.7546	10,10
D	344.153.3261	4.259.305.2907	59,94
E	344.187.7148	4.259.317.2510	36,41
F	344.213.3115	4.259.351.6791	70,20
G	344.207.5124	4.259.241.9195	11,52
H	344.201.8988	4.259.252.7321	17,13
I	344.184.0945	4.259.215.6276	20,33
K	344.174.6428	4.259.214.6276	9,44
L	344.160.9451	4.259.209.9458	14,55
M	344.151.9306	4.259.198.1480	14,85
N	344.129.2483	4.259.179.1838	29,57
O	344.117.9006	4.259.183.0544	11,99
P	344.109.4280	4.259.178.2957	6,09
Q	344.105.3460	4.259.170.6100	13,21
R	344.103.5468	4.259.164.6390	6,41
S	344.091.9522	4.259.162.0273	21,08
T	344.078.4278	4.259.359.9545	4,66
U	344.064.8847	4.259.365.7288	12,16
V	344.064.1889	4.259.400.5942	28,45
W	344.064.3847	4.259.305.8335	7,82
X	344.046.8462	4.259.271.2583	89,39
Y	344.145.4426	4.259.305.7627	52,49
Z	344.145.4426	4.259.286.0730	10,59
A1	343.939.7697	4.259.154.0225	39,71
B1	343.915.6212	4.259.320.3047	58,97
C1	344.145.2200	4.258.308.7331	8,05
D1	344.048.0182	4.258.304.5337	9,81
E1	344.160.7949	4.258.327.1768	26,00
F1	344.188.9414	4.258.342.0216	89,69
G1	344.202.9177	4.258.328.0249	21,25
H1	344.211.3278	4.258.368.8478	12,19
I1	344.198.0500	4.258.360.4000	18,61
J1	344.229.6000	4.258.370.4000	95,22
K1	344.200.5841	4.258.361.7542	3,00
L1	344.205.1532	4.258.362.4890	4,63
M1	344.214.9480	4.258.362.8967	9,80
N1	344.235.0942	4.258.361.4377	20,20

Συντεταγμένες Ανατολικά (ΕΓΓΑ Β7)  
Ε-33.744.64

Σημείο	X	Y	Απόσταση σημείων (v-y-1)
A	344.328.4231	4.259.376.9480	8,91
B	344.337.2898	4.259.376.0245	11,11
C	344.337.8171	4.259.376.0440	11,09
D	344.363.3500	4.258.513.0400	11,69
E	344.562.1500	4.258.511.0900	21,27
F	344.562.9500	4.258.513.0400	13,88
G	344.564.8000	4.258.514.0400	13,88
H	344.567.6262	4.258.554.9262	61,97
I	344.574.8238	4.258.544.3978	7,58
J	344.574.8238	4.258.581.5812	26,10
K	344.583.9609	4.259.381.6885	4,83
L	344.583.9609	4.259.376.0539	5,35
M	344.586.8961	4.259.368.2317	22,69
N	344.588.9890	4.259.379.4251	8,79
O	344.588.9890	4.259.379.4251	4,77
P	344.598.0805	4.259.365.0988	3,02
Q	344.598.0805	4.259.369.7201	7,17
R	344.611.2735	4.259.369.7201	3,35
S	344.629.6255	4.259.369.7201	13,32
T	344.629.6255	4.259.369.7201	11,31
U	344.629.6255	4.259.369.7201	11,31
V	344.629.6255	4.259.369.7201	7,73
W	344.629.6255	4.259.369.7201	4,66
X	344.629.6255	4.259.369.7201	12,16
Y	344.629.6255	4.259.369.7201	9,94
Z	344.629.6255	4.259.369.7201	8,22
A1	343.939.7697	4.259.154.0225	39,71
B1	343.915.6212	4.259.320.3047	58,97
C1	344.145.2200	4.258.308.7331	8,05
D1	344.048.0182	4.258.304.5337	9,81
E1	344.160.7949	4.258.327.1768	26,00
F1	344.188.9414	4.258.342.0216	89,69
G1	344.202.9177	4.258.328.0249	21,25
H1	344.211.3278	4.258.368.8478	12,19
I1	344.198.0500	4.258.360.4000	18,61
J1	344.229.6000	4.258.370.4000	95,22
K1	344.200.5841	4.258.361.7542	3,00
L1	344.205.1532	4.258.362.4890	4,63
M1	344.214.9480	4.258.362.8967	9,80
N1	344.235.0942	4.258.361.4377	20,20

Συντεταγμένες Κόρυφα (ΕΓΓΑ Β7)  
Ε-3.094.63

Σημείο	X	Y	Απόσταση σημείων (v-y-1)
A	345.610.6262	4.258.533.1842	26,97
B	345.610.6262	4.258.533.1842	26,97
C	345.610.6262	4.258.533.1842	26,97
D	345.610.6262	4.258.533.1842	26,97
E	345.610.6262	4.258.533.1842	26,97
F	345.610.6262	4.258.533.1842	26,97
G	345.610.6262	4.258.533.1842	26,97
H	345.610.6262	4.258.533.1842	26,97
I	345.610.6262	4.258.533.1842	26,97
J	345.610.6262	4.258.533.1842	26,97
K	345.610.6262	4.258.533.1842	26,97
L	345.610.6262	4.258.533.1842	26,97
M	345.610.6262	4.258.533.1842	26,97
N	345.610.6262	4.258.533.1842	26,97
O	345.610.6262	4.258.533.1842	26,97
P	345.610.6262	4.258.533.1842	26,97
Q	345.610.6262	4.258.533.1842	26,97
R	345.610.6262	4.258.533.1842	26,97
S	345.610.6262	4.258.533.1842	26,97
T	345.610.6262	4.258.533.1842	26,97
U	345.610.6262	4.258.533.1842	26,97
V	345.610.6262	4.258.533.1842	26,97
W	345.610.6262	4.258.533.1842	26,97
X	345.610.6262	4.258.533.1842	26,97
Y	345.610.6262	4.258.533.1842	26,97
Z	345.610.6262	4.258.533.1842	26,97

Συντεταγμένες Καλάδες (ΕΓΓΑ Β7)  
Ε-22.953.79

Σημείο	X	Y	Απόσταση σημείων (v-y-1)
A	345.856.3275	4.258.819.2399	39,35
B	345.856.3275	4.258.819.2399	39,35
C	345.856.3275	4.258.819.2399	39,35
D	345.856.3275	4.258.819.2399	39,35
E	345.856.3275	4.258.819.2399	39,35
F	345.856.3275	4.258.819.2399	39,35
G	345.856.3275	4.258.819.2399	39,35
H	345.856.3275	4.258.819.2399	39,35
I	345.856.3275	4.258.819.2399	39,35
J	345.856.3275	4.258.819.2399	39,35
K	345.856.3275	4.258.819.2399	39,35
L	345.856.3275	4.258.819.2399	39,35
M	345.856.3275	4.258.819.2399	39,35
N	345.856.3275	4.258.819.2399	39,35
O	345.856.3275	4.258.819.2399	39,35
P	345.856.3275	4.258.819.2399	39,35
Q	345.856.3275	4.258.819.2399	39,35
R	345.856.3275	4.258.819.2399	39,35
S	345.856.3275	4.258.819.2399	39,35
T	345.856.3275	4.258.819.2399	39,35
U	345.856.3275	4.258.819.2399	39,35
V	345.856.3275	4.258.819.2399	39,35
W	345.856.3275	4.258.819.2399	39,35
X	345.856.3275	4.258.819.2399	39,35
Y	345.856.3275	4.258.819.2399	39,35
Z	345.856.3275	4.258.819.2399	39,35

ΕΡΓΟ : ΑΠΟΤΥΠΩΣΗ ΑΓΡΟΤΕΜΑΧΙΩΝ

"ΚΙΟΛΙ", "ΛΑΓΟΡΕΜΑ", "ΝΕΡΙΖΑ",  
"ΧΑΛΙΑΔΕΣ", "ΚΟΥΡΖΑ"  
ΚΤΗΜΑΤΙΚΗΣ ΠΕΡΙΦΕΡΕΙΑΣ  
ΘΕΣΣΙΕΣ ΕΡΓΩΝ: Τ.Κ. ΜΑΛΑΝΔΡΙΝΟΥ ΔΗΜΟΥ ΔΩΡΙΔΙΟΣ

"ΜΑΡΜΑΡΟ"  
ΚΤΗΜΑΤΙΚΗΣ ΠΕΡΙΦΕΡΕΙΑΣ  
Τ.Κ. ΑΝΥΓΓΑΛΙΑΣ ΔΗΜΟΥ ΔΩΡΙΔΙΟΣ

ΜΕΛΕΤΗΤΗΣ ΒΕΛΛΙΑΣ ΓΕΩΡΓΙΟΣ  
ΠΟΛΙΤΙΚΟΣ ΜΗΧΑΝΙΚΟΣ

ΘΕΜΑ ΣΧΕΔΙΟΥ:  
ΑΡΙΘΜΟΣ ΣΧΕΔΙΟΥ  
Τ1

ΤΟΠΟΓΡΑΦΙΚΟ ΔΙΑΓΡΑΜΜΑ

ΚΛΙΜΑΚΑ ΣΧΕΔΙΟΥ 1:5000

ΗΜΕΡΟΜΗΝΙΑ: ΟΚΤΩΒΡΙΟΣ 2020

ΣΦΡΑΓΙΔΑ ΤΟΠΟΓΡΑΦΗ

ΒΕΩΡΗΣΗ

ΓΕΩΡΓΙΟΣ ΒΕΛΛΙΑΣ  
ΔΙΠΛΩΜΑΤΙΚΟΣ ΜΗΧΑΝΙΚΟΣ  
ΑΡ. ΠΡΩΤ. ΔΟΥ Τ.Ε.Ε. 10427 4  
ΑΜΙΑΝΕΣ Π. ΛΑΜΙΑ. ΚΙΝ. 69447398 7  
ΑΦΗ: 7305944475 ΔΟΥ: ΛΑΜΙΑ Σ