

ΚΑΙΜΑΚΑ 1 : 50.000

ΥΠΟΜΝΗΜΑ	ΟΡΙΑ ΓΗΠΕΔΩΝ - ΠΟΛΥΓΩΝΩΝ ΑΙΟΛΙΚΟΥ ΠΑΡΚΟΥ	
—	ΥΦΙΣΤΑΜΕΝΗ ΟΔΟΠΟΙΑ	
ΚΟΡΥΦΕΣ ΠΟΛΥΓΩΝΟΥ ΓΗΠΕΔΟΥ ΕΚΤΑΣΗΣ Ε1 (ΕΓΣΑ87)		
ΚΟΡΥΦΗ	X	Y
K1	380527.000	4253946.000
K2	380943.000	4253630.000
K3	381097.000	4253839.000
K4	380678.000	4254115.000
ΕΜΒΛΑΔΟΝ ΟΙΚΙΠΕΔΟΥ = 124.047,5 Μ ²		
ΚΟΡΥΦΕΣ ΠΟΛΥΓΩΝΟΥ ΓΗΠΕΔΟΥ ΕΚΤΑΣΗΣ Ε2 (ΕΓΣΑ87)		
ΚΟΡΥΦΗ	X	Y
K5	381486	4252789
K6	380569	4252627
K7	381546	4252384
K8	381300	4252485
K9	381271	4252685
ΕΜΒΛΑΔΟΝ ΟΙΚΙΠΕΔΟΥ = 77.890,5 Μ ²		
ΚΟΡΥΦΕΣ ΠΟΛΥΓΩΝΟΥ ΓΗΠΕΔΟΥ ΕΚΤΑΣΗΣ Ε3 (ΕΓΣΑ87)		
ΚΟΡΥΦΗ	X	Y
K10	380849	4252070
K11	381146	4252180
K12	381030	4252462
K13	380738	4252346
ΕΜΒΛΑΔΟΝ ΟΙΚΙΠΕΔΟΥ = 96.605,0 Μ ²		
ΣΥΝΟΛΙΚΟ ΕΜΒΛΑΔΟΝ ΓΗΠΕΔΩΝ 1, 2 & 3 ΑΞΙΘΕ = 124.047,5 + 77.890,5 + 96.605,0 = 298.543,0 Μ ²		

ΑΠΟΤΥΠΩΣΗ ΓΗΠΕΔΩΝ
ΕΚΤΑΣΕΩΝ Ε1, Ε2 & Ε3
ΕΜΒΛΑΔΩΝ 124.047,5 Τ.Μ.,
77.890,5 Τ.Μ. ΚΑΙ 96.605,0 Τ.Μ.
ΑΝΤΙΣΤΟΙΧΑ, ΣΤΟΥΣ ΧΑΡΤΕΣ
ΓΥΣ 63046 ΚΑΙ 63047

**ΑΙΟΛΙΚΗ ΕΝΕΡΓΟΚΛΑΝ ΠΑΡΝΑΣΣΟΣ
ΜΟΝΟΠΡΟΣΩΠΗ Ε.Π.Ε.**

Λ. Χαλανδρίου & Γούναρη 2, Αγία Παρασκευή 15943, Τηλ: 2155512100

ΕΡΓΟ / ΘΕΣΗ / ΦΟΡΕΑΣ ΕΡΓΟΥ:
**ΠΡΟΤΕΙΝΟΜΕΝΟΣ ΑΙΟΛΙΚΟΣ ΣΤΑΘΜΟΣ ΠΑΡΑΓΩΓΗΣ
ΗΛΕΚΤΡΙΚΗΣ ΕΝΕΡΓΕΙΑΣ ΙΣΧΥΟΣ 12,00 MW ΣΤΗ ΘΕΣΗ
"ΓΡΑΜΜΕΝΗ ΠΛΑΚΑ - ΡΑΧΗ" ΤΟΥ ΔΗΜΟΥ
ΔΙΣΤΟΜΟΥ-ΑΡΑΧΟΒΑΣ-ΑΝΤΙΚΥΡΑΣ, ΔΗΜΟΤΙΚΗΣ ΕΝΟΤΗΤΑΣ
ΑΝΤΙΚΥΡΑΣ-ΔΙΣΤΟΜΟΥ, ΠΕΡΙΦΕΡΕΙΑΚΗΣ ΕΝΟΤΗΤΑΣ
ΒΟΙΩΤΙΑΣ, ΠΕΡΙΦΕΡΕΙΑΣ ΣΤΕΡΕΑΣ ΕΛΛΑΔΑΣ**

**ΤΟΠΟΓΡΑΦΙΚΟ ΔΙΑΓΡΑΜΜΑ ΓΙΑ ΕΚΔΟΣΗ ΠΡΑΞΗΣ
ΧΑΡΑΚΤΗΡΙΣΜΟΥ ΤΩΝ ΕΚΤΑΣΕΩΝ Ε1, Ε2 & Ε3**

ΑΡΙΘΜΟΣ ΣΧΕΔΙΟΥ: ΠΑΧ-1

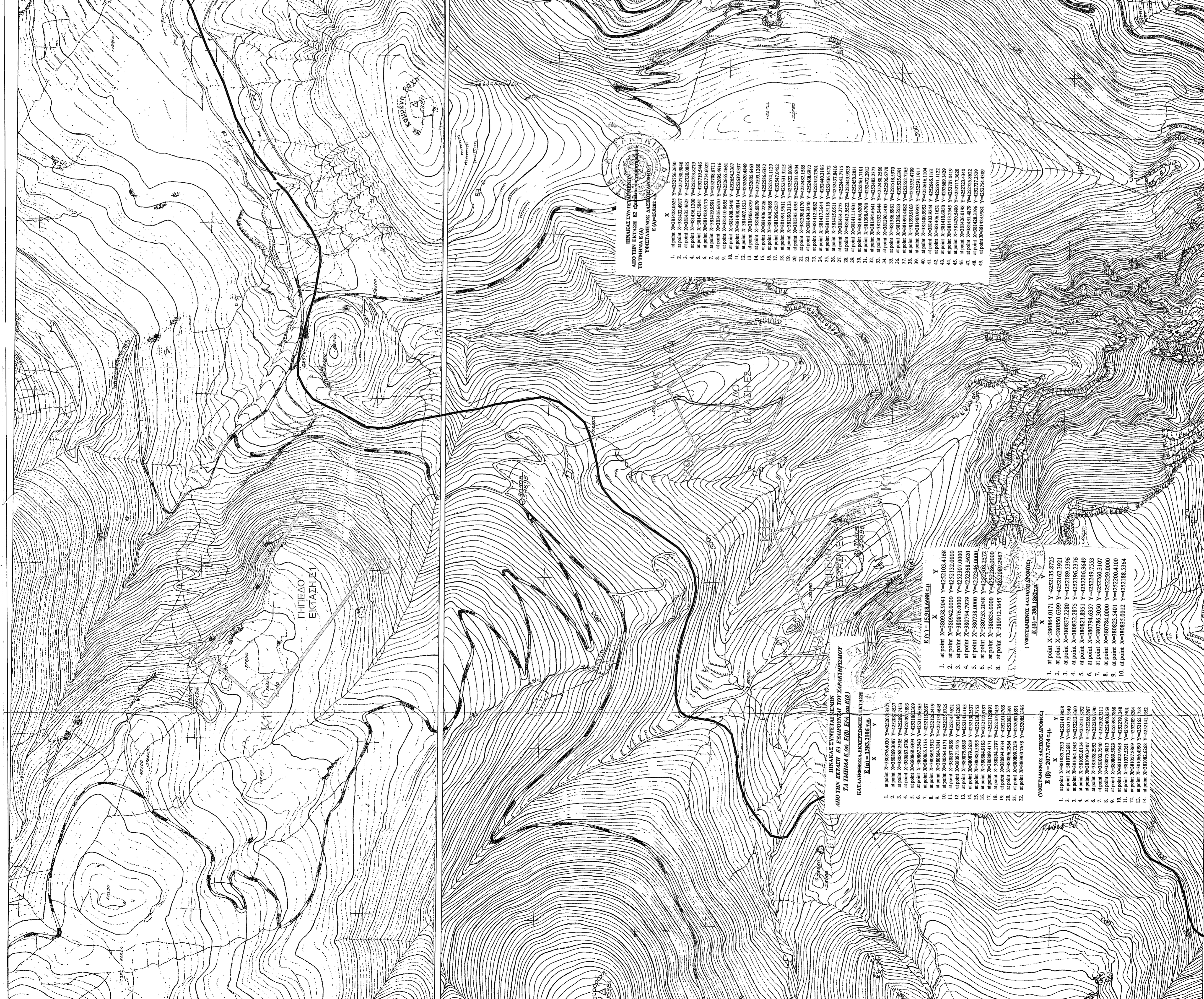
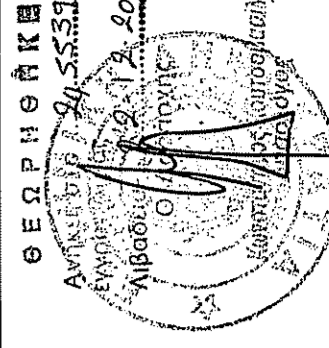
ΚΑΙΜΑΚΑ: 1 : 5.000
1 : 50.000

ΜΕΛΕΤΗΤΗΣ:

ΧΡΗΣΤΟΣ ΚΥΡΙΑΚΟΠΟΥΛΟΣ
ΔΙΠΛΩΜΑΤΟΥΧΟΣ ΠΟΛΙΤΙΚΟΣ ΜΗΧΑΝΙΚΟΣ
Λ.ΧΑΛΑΝΔΡΙΟΥ & ΓΟΥΝΑΡΗ 2, ΑΓΙΑ ΠΑΡΑΣΚΕΥΗ
Τηλ. 2155512100, Κιν. 6949880000

ΣΦΡΑΓΙΣ / ΥΠΟΓΡΑΦΗ:

ΧΡΗΣΤΟΣ Β. ΚΥΡΙΑΚΟΠΟΥΛΟΣ
ΔΙΠΛΩΜΑΤΟΥΧΟΣ ΠΟΛΙΤΙΚΟΣ ΜΗΧΑΝΙΚΟΣ
ΠΡΑΚΤΙΚΗΣ ΕΡΓΑΣΙΑΣ & ΜΕΛΕΤΩΝ
Κ.Π. Τ.Ε.Ε. 6949880000
ΔΟΧ/ΜΕΛΕΤΗΤΗΣ-ΔΟΥΛΗΠΟΙΩΝ ΑΤΙΤΗΣ



ΠΙΝΑΚΑΣ ΣΥΝΤΕΤΑΓΜΕΝΩΝ
ΑΠΟ ΤΗΝ ΕΚΤΑΣΗ Ε2
ΤΟ ΤΜΗΜΑ Ε (Α)
ΥΦΙΣΤΑΜΕΝΟΣ ΔΙΑΣΤΟΜΟΥ
Ε (Α) - 15.918,688 Μ²

Α/Α	X	Y
1.	at point X=381428.025	Y=4252746.2600
2.	at point X=381432.617	Y=4252748.9846
3.	at point X=381434.100	Y=4252750.8279
4.	at point X=381431.594	Y=4252719.5446
5.	at point X=381435.120	Y=4252723.8279
6.	at point X=381432.919	Y=4252714.6022
7.	at point X=381434.100	Y=4252719.5446
8.	at point X=381416.661	Y=4252695.4916
9.	at point X=381410.865	Y=4252665.4661
10.	at point X=381408.549	Y=4252654.3397
11.	at point X=381406.689	Y=4252654.3397
12.	at point X=381406.689	Y=4252654.3397
13.	at point X=381406.689	Y=4252654.3397
14.	at point X=381406.689	Y=4252654.3397
15.	at point X=381406.689	Y=4252654.3397
16.	at point X=381406.689	Y=4252654.3397
17.	at point X=381406.689	Y=4252654.3397
18.	at point X=381406.689	Y=4252654.3397
19.	at point X=381406.689	Y=4252654.3397
20.	at point X=381406.689	Y=4252654.3397
21.	at point X=381406.689	Y=4252654.3397
22.	at point X=381406.689	Y=4252654.3397
23.	at point X=381406.689	Y=4252654.3397
24.	at point X=381406.689	Y=4252654.3397
25.	at point X=381406.689	Y=4252654.3397
26.	at point X=381406.689	Y=4252654.3397
27.	at point X=381406.689	Y=4252654.3397
28.	at point X=381406.689	Y=4252654.3397
29.	at point X=381406.689	Y=4252654.3397
30.	at point X=381406.689	Y=4252654.3397
31.	at point X=381406.689	Y=4252654.3397
32.	at point X=381406.689	Y=4252654.3397
33.	at point X=381406.689	Y=4252654.3397
34.	at point X=381406.689	Y=4252654.3397
35.	at point X=381406.689	Y=4252654.3397
36.	at point X=381406.689	Y=4252654.3397
37.	at point X=381406.689	Y=4252654.3397
38.	at point X=381406.689	Y=4252654.3397
39.	at point X=381406.689	Y=4252654.3397
40.	at point X=381406.689	Y=4252654.3397
41.	at point X=381406.689	Y=4252654.3397
42.	at point X=381406.689	Y=4252654.3397
43.	at point X=381406.689	Y=4252654.3397
44.	at point X=381406.689	Y=4252654.3397
45.	at point X=381406.689	Y=4252654.3397
46.	at point X=381406.689	Y=4252654.3397
47.	at point X=381406.689	Y=4252654.3397
48.	at point X=381406.689	Y=4252654.3397
49.	at point X=381406.689	Y=4252654.3397
50.	at point X=381406.689	Y=4252654.3397
51.	at point X=381406.689	Y=4252654.3397
52.	at point X=381406.689	Y=4252654.3397
53.	at point X=381406.689	Y=4252654.3397
54.	at point X=381406.689	Y=4252654.3397
55.	at point X=381406.689	Y=4252654.3397
56.	at point X=381406.689	Y=4252654.3397
57.	at point X=381406.689	Y=4252654.3397
58.	at point X=381406.689	Y=4252654.3397
59.	at point X=381406.689	Y=4252654.3397
60.	at point X=381406.689	Y=4252654.3397
61.	at point X=381406.689	Y=4252654.3397
62.	at point X=381406.689	Y=4252654.3397
63.	at point X=381406.689	Y=4252654.3397
64.	at point X=381406.689	Y=4252654.3397
65.	at point X=381406.689	Y=4252654.3397

ΠΙΝΑΚΑΣ ΣΥΝΤΕΤΑΓΜΕΝΩΝ
ΑΠΟ ΤΗΝ ΕΚΤΑΣΗ Ε3
ΤΟ ΤΜΗΜΑ Ε (Β) ΕΠΙ ΤΩΝ Ε2
ΥΦΙΣΤΑΜΕΝΟΣ ΔΙΑΣΤΟΜΟΥ
Ε (Β) - 2077,7474 Μ²

Α/Α	X	Y
1.	at point X=380876.400	Y=4252013.327
2.	at point X=380880.397	Y=4252014.858
3.	at point X=380884.394	Y=4252016.389
4.	at point X=380888.391	Y=4252017.920
5.	at point X=380892.388	Y=4252020.451
6.	at point X=380896.385	Y=4252022.982
7.	at point X=380900.382	Y=4252024.513
8.	at point X=380904.379	Y=4252026.044
9.	at point X=380908.376	Y=4252027.575
10.	at point X=380912.373	Y=4252029.106
11.	at point X=380916.370	Y=4252030.637
12.	at point X=380920.367	Y=4252032.168
13.	at point X=380924.364	Y=4252033.699
14.	at point X=380928.361	Y=4252035.230
15.	at point X=380932.358	Y=4252036.761
16.	at point X=380936.355	Y=4252038.292
17.	at point X=380940.352	Y=4252040.823
18.	at point X=380944.349	Y=4252042.354
19.	at point X=380948.346	Y=4252043.885
20.	at point X=380952.343	Y=4252045.416
21.	at point X=380956.340	Y=4252046.947
22.	at point X=380960.337	Y=4252048.478

ΠΙΝΑΚΑΣ ΣΥΝΤΕΤΑΓΜΕΝΩΝ
ΑΠΟ ΤΗΝ ΕΚΤΑΣΗ Ε1
ΤΟ ΤΜΗΜΑ Ε (Α) ΕΠΙ ΤΩΝ Ε2
ΥΦΙΣΤΑΜΕΝΟΣ ΔΙΑΣΤΟΜΟΥ
Ε (Α) - 15.918,688 Μ²

Α/Α	X	Y
1.	at point X=380938.994	Y=4252103.4168
2.	at point X=380942.000	Y=4252132.0000
3.	at point X=380945.006	Y=4252160.5921
4.	at point X=380948.012	Y=4252189.1842
5.	at point X=380951.018	Y=4252217.7763
6.	at point X=380954.024	Y=4252246.3684
7.	at point X=380957.030	Y=4252274.9605
8.	at point X=380960.036	Y=4252303.5526
9.	at point X=380963.042	Y=4252332.1447
10.	at point X=380966.048	Y=4252360.7368
11.	at point X=380969.054	Y=4252389.3289
12.	at point X=380972.060	Y=4252417.9210
13.	at point X=380975.066	Y=4252446.5131
14.	at point X=380978.072	Y=4252475.1052
15.	at point X=380981.078	Y=4252503.6973
16.	at point X=380984.084	Y=4252532.2894
17.	at point X=380987.090	Y=4252560.8815
18.	at point X=380990.096	Y=4252589.4736
19.	at point X=380993.102	Y=4252618.0657
20.	at point X=380996.108	Y=4252646.6578
21.	at point X=380999.114	Y=4252675.2499
22.	at point X=381002.120	Y=4252703.8420