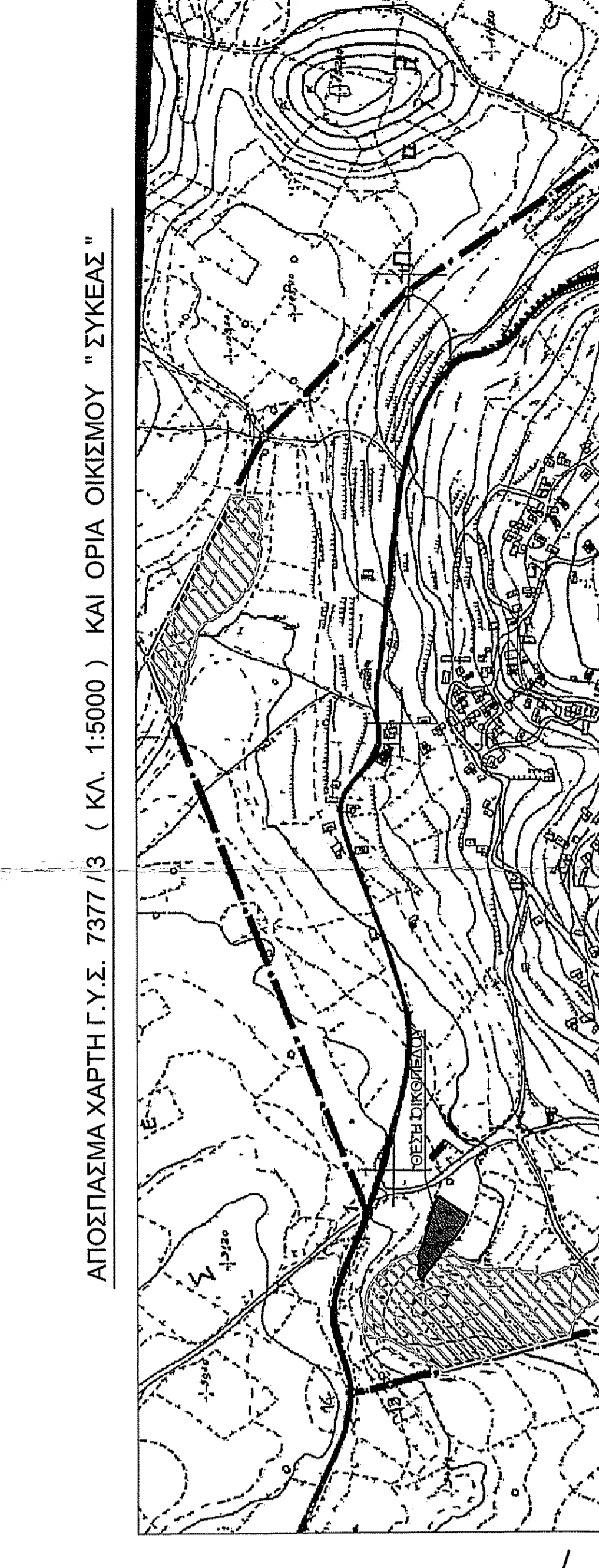
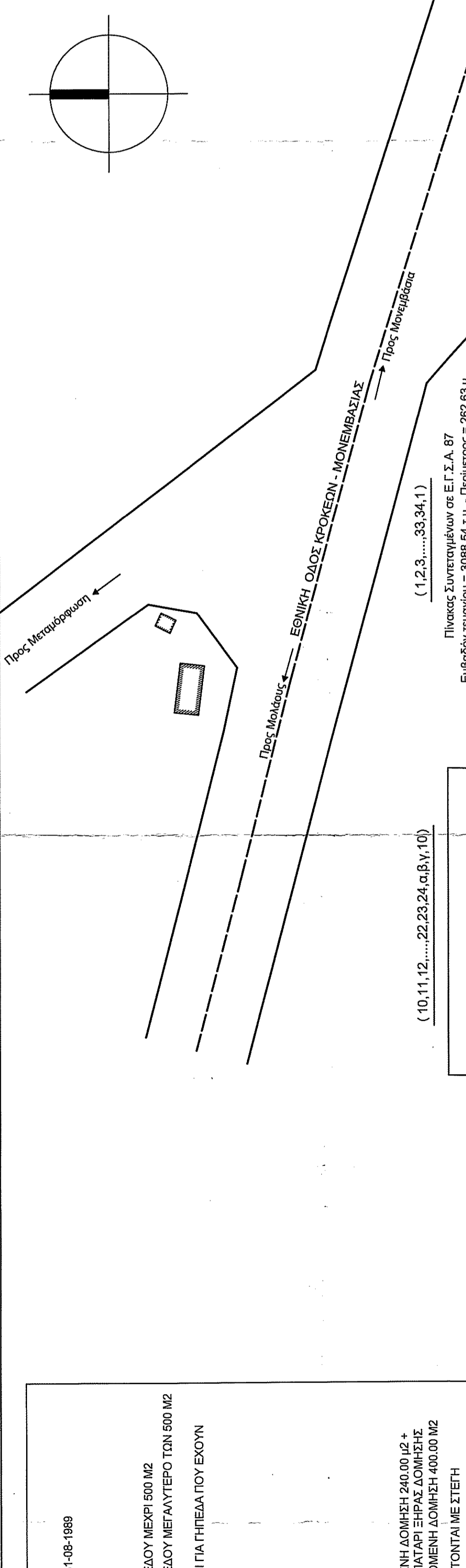


ΟΡΘΟΔΟΜΗΣΗ
 ΠΛ. 24/4/95 (Φ.Ε.Κ. 181 ΔΤΗΣ 3/1/95)
 ΚΑΙ ΠΛ. 1/2/99 (Φ.Ε.Κ. 183 ΔΤΗΣ 2/2/97)
 ΚΑΙ ΠΛ. 1/2/99 (Φ.Ε.Κ. 184 ΔΤΗΣ 2/2/97) Δ. ΤΗΣ 24-08-1988
 ΠΡΟΣΦΩΝΗ : (Φ.Ε.Κ. 3, ΔΤΗΣ 13-01-1985)
 ΠΛΑΤΑΓΙΑ ΤΗΣ 4 ΝΟΕΜΒΡΙΟΥ 2011 Φ.Ε.Κ. 289 ΑΔΤ
 ΑΡΤΙΟΤΗΤΑ ΚΑΤΑ ΚΑΝΟΝΑ 500 Μ2
 ΕΛΑΧΙΣΤΟ ΜΙΚΡΟΣ ΠΡΟΣΤΟΙΥ 10 Μ ΠΑ ΕΜΒΛΑΝΤ ΓΥΡΕΛΟΥ ΜΕΧΡΙ 500 Μ2
 ΕΛΑΧΙΣΤΟ ΜΙΚΡΟΣ ΠΡΟΣΤΟΙΥ 15 Μ ΠΑ ΕΜΒΛΑΝΤ ΓΥΡΕΛΟΥ ΜΕΓΑΛΥΤΕΡΟ 100 Μ2
 Η ΑΝΩΤΕΡΑ ΑΠΛΗΤΗΡΗ ΜΙΚΡΟΣ ΠΡΟΣΤΟΙΥ ΔΕΝ ΙΣΧΥΕΙ ΠΑ ΓΥΡΕΛΟΥ ΕΧΟΥΝ
 ΔΗΜΙΟΥΡΓΗΘΕΙ ΜΕΧΡΙ ΤΗΝ 4-11-2011
 ΚΑΤΑ ΠΑΡΕΚΛΙΣΗ ΜΕΛΑ ΣΤΑ ΟΡΙΑ ΤΟΥ ΟΙΚΙΣΜΟΥ
 ΒΕΡΡΟΥΝΤΑΙ ΑΡΤΙΑ ΚΑΙ ΟΙΚΟΔΟΜΗΜΑ ΤΑ ΟΙΚΙΩΝ
 ΜΕ ΟΠΟΙΟΔΗΠΟΤΕ ΕΜΒΛΑΝΤ ΕΧΑΝ ΣΤΕ 300Μ2
 ΜΕΓΕΛΥΣΕΙΣ ΕΙΣ ΤΗ 107 ΑΥΤΟ 24/185 ΠΛ.
 ΜΕΓΕΛΥΣΕΙΣ ΕΙΣ ΤΗ 107 ΑΥΤΟ 24/185 ΠΛ.
 ΕΠΙΠΡΟΣΘΕΜΕΝΗ ΚΑΛΥΨΗ 5.0.80
 ΕΠΙΠΡΟΣΘΕΜΕΝΗ ΔΟΜΗΣΗ:
 ΠΑ ΓΥΡΕΛΟ ΜΙΚΡΟΤΕΡΟ ΤΩΝ 200 Σ.Δ. 1.00
 ΠΑ ΓΥΡΕΛΟ ΜΙΚΡΟΤΕΡΑ ΤΩΝ 700 Μ2 Σ.Δ. ΕΠΙΠΡΟΣΘΕΜΕΝΗ ΔΟΜΗΝ 240.00 Μ2
 ΠΑ ΓΥΡΕΛΟ ΜΕΓΑΛΥΤΕΡΑ Η Ή ΤΩΝ 700 Μ2 ΕΠΙΠΡΟΣΘΕΜΕΝΗ ΔΟΜΗΝ 400.00 Μ2
 ΟΙ ΔΩΡΟΦΟΡΕ ΑΝΕΠΙΘΕΜΕΝΕΣ ΟΙΚΟΔΟΜΕΣ ΘΑ ΚΑΛΥΠΤΟΝΤΑΙ ΜΕ ΣΤΕΦΗ



ΔΙΑΓΡΑΜΜΙΣΜΕΝΟ ΤΜΗΜΑ
(Γραμμή Εισιτηρίων)

Πτυχός Συντεταγμένων σε Ε.Τ.Α. 87
Εμβαδόν τμήματος = 873.59 τ.μ. - Περιμετρός = 132.95 μ.

Α/Α	X	Y	Αποστάσεις
10	404950.12	4089274.91	10 - 11: 7.89
11	404944.33	4089278.83	11 - 12: 4.08
12	404938.55	4089283.02	12 - 13: 4.11
13	404932.77	4089287.21	13 - 14: 4.14
14	404926.99	4089285.06	14 - 15: 14.82
15	404921.21	4089282.93	15 - 16: 7.89
16	404915.43	4089278.83	16 - 17: 2.80
17	404909.65	4089274.91	17 - 18: 1.34
18	404903.87	4089270.99	18 - 19: 3.84
19	404898.09	4089266.06	19 - 20: 26.79
20	404892.31	4089252.33	20 - 21: 6.04
21	404886.53	4089238.61	21 - 22: 3.04
22	404880.75	4089224.89	22 - 23: 3.11
23	404874.97	4089211.17	23 - 24: 9.45
24	404869.19	4089197.45	α - β: 18.39
25	404863.41	4089183.73	β - γ: 8.16
26	404857.63	4089170.01	γ - δ: 2.89

(1, 2, 3, ..., 33, 34, 1)

Πτυχός Συντεταγμένων σε Ε.Τ.Α. 87
Εμβαδόν τμήματος = 3088.54 τ.μ. - Περιμετρός = 292.83 μ.

Α/Α	X	Y	Αποστάσεις
1	405003.57	4089248.61	1 - 2: 12.63
2	404997.79	4089244.69	2 - 3: 12.43
3	404992.01	4089240.77	3 - 4: 16.01
4	404986.23	4089236.85	4 - 5: 7.19
5	404980.45	4089232.93	5 - 6: 13.81
6	404974.67	4089228.01	6 - 7: 13.81
7	404968.89	4089224.09	7 - 8: 2.96
8	404963.11	4089219.17	8 - 9: 2.30
9	404957.33	4089215.25	9 - 10: 1.91
10	404951.55	4089211.33	10 - 11: 4.08
11	404945.77	4089207.41	11 - 12: 4.08
12	404940.00	4089203.49	12 - 13: 5.63
13	404934.22	4089199.57	13 - 14: 4.11
14	404928.44	4089195.65	14 - 15: 14.92
15	404922.66	4089191.73	15 - 16: 14.92
16	404916.88	4089187.81	16 - 17: 2.80
17	404911.10	4089183.89	17 - 18: 3.84
18	404905.32	4089179.97	18 - 19: 1.34
19	404899.54	4089176.05	19 - 20: 26.79
20	404893.76	4089172.13	20 - 21: 6.04
21	404887.98	4089168.21	21 - 22: 3.04
22	404882.20	4089164.29	22 - 23: 3.11
23	404876.42	4089160.37	23 - 24: 9.45
24	404870.64	4089156.45	α - β: 18.39
25	404864.86	4089152.53	β - γ: 8.16
26	404859.08	4089148.61	γ - δ: 2.89
27	404853.30	4089144.69	δ - ε: 12.63
28	404847.52	4089140.77	ε - ζ: 12.43
29	404841.74	4089136.85	ζ - η: 16.01
30	404835.96	4089132.93	η - θ: 7.19
31	404830.18	4089129.01	θ - ι: 13.81
32	404824.40	4089125.09	ι - κ: 13.81
33	404818.62	4089121.17	κ - λ: 2.96
34	404812.84	4089117.25	λ - μ: 2.30
35	404807.06	4089113.33	μ - ν: 1.91
36	404801.28	4089109.41	ν - ξ: 4.08
37	404795.50	4089105.49	ξ - ο: 4.08
38	404789.72	4089101.57	ο - π: 5.63
39	404783.94	4089097.65	π - ρ: 4.11
40	404778.16	4089093.73	ρ - σ: 14.92
41	404772.38	4089089.81	σ - τ: 14.92
42	404766.60	4089085.89	τ - υ: 2.80
43	404760.82	4089081.97	υ - φ: 3.84
44	404755.04	4089077.05	φ - χ: 1.34
45	404749.26	4089073.13	χ - ψ: 26.79
46	404743.48	4089069.21	ψ - ω: 6.04
47	404737.70	4089065.29	ω - α: 3.04
48	404731.92	4089061.37	α - β: 3.11
49	404726.14	4089057.45	β - γ: 9.45
50	404720.36	4089053.53	γ - δ: 18.39
51	404714.58	4089049.61	δ - ε: 8.16
52	404708.80	4089045.69	ε - ζ: 2.89
53	404703.02	4089041.77	ζ - η: 12.63
54	404697.24	4089037.85	η - θ: 12.43
55	404691.46	4089033.93	θ - ι: 16.01
56	404685.68	4089030.01	ι - κ: 7.19
57	404679.90	4089026.09	κ - λ: 13.81
58	404674.12	4089022.17	λ - μ: 13.81
59	404668.34	4089018.25	μ - ν: 2.96
60	404662.56	4089014.33	ν - ξ: 2.30
61	404656.78	4089010.41	ξ - ο: 1.91
62	404651.00	4089006.49	ο - π: 4.08
63	404645.22	4089002.57	π - ρ: 4.08
64	404639.44	4088998.65	ρ - σ: 5.63
65	404633.66	4088994.73	σ - τ: 4.11
66	404627.88	4088990.81	τ - υ: 14.92
67	404622.10	4088986.89	υ - φ: 14.92
68	404616.32	4088982.97	φ - χ: 2.80
69	404610.54	4088978.05	χ - ψ: 3.84
70	404604.76	4088974.13	ψ - ω: 1.34
71	404598.98	4088970.21	ω - α: 26.79
72	404593.20	4088966.29	α - β: 6.04
73	404587.42	4088962.37	β - γ: 3.04
74	404581.64	4088958.45	γ - δ: 3.11
75	404575.86	4088954.53	δ - ε: 9.45
76	404570.08	4088950.61	ε - ζ: 18.39
77	404564.30	4088946.69	ζ - η: 8.16
78	404558.52	4088942.77	η - θ: 2.89
79	404552.74	4088938.85	θ - ι: 12.63
80	404546.96	4088934.93	ι - κ: 12.43
81	404541.18	4088931.01	κ - λ: 16.01
82	404535.40	4088927.09	λ - μ: 7.19
83	404529.62	4088923.17	μ - ν: 13.81
84	404523.84	4088919.25	ν - ξ: 13.81
85	404518.06	4088915.33	ξ - ο: 2.96
86	404512.28	4088911.41	ο - π: 2.30
87	404506.50	4088907.49	π - ρ: 1.91
88	404500.72	4088903.57	ρ - σ: 4.08
89	404494.94	4088900.01	σ - τ: 4.08
90	404489.16	4088896.09	τ - υ: 5.63
91	404483.38	4088892.17	υ - φ: 4.11
92	404477.60	4088888.25	φ - χ: 14.92
93	404471.82	4088884.33	χ - ψ: 14.92
94	404466.04	4088880.41	ψ - ω: 2.80
95	404460.26	4088876.49	ω - α: 3.84
96	404454.48	4088872.57	α - β: 1.34
97	404448.70	4088871.13	β - γ: 26.79
98	404442.92	4088867.21	γ - δ: 6.04
99	404437.14	4088863.29	δ - ε: 3.04
100	404431.36	4088859.37	ε - ζ: 3.11
101	404425.58	4088855.45	ζ - η: 9.45
102	404419.80	4088851.53	η - θ: 18.39
103	404414.02	4088847.61	θ - ι: 8.16
104	404408.24	4088843.69	ι - κ: 2.89
105	404402.46	4088839.77	κ - λ: 12.63
106	404396.68	4088835.85	λ - μ: 12.43
107	404390.90	4088831.93	μ - ν: 16.01
108	404385.12	4088827.01	ν - ξ: 7.19
109	404379.34	4088823.09	ξ - ο: 13.81
110	404373.56	4088819.17	ο - π: 13.81
111	404367.78	4088815.25	π - ρ: 2.96
112	404362.00	4088811.33	ρ - σ: 2.30
113	404356.22	4088807.41	σ - τ: 1.91
114	404350.44	4088803.49	τ - υ: 4.08
115	404344.66	4088799.57	υ - φ: 4.08
116	404338.88	4088795.65	φ - χ: 5.63
117	404333.10	4088791.73	χ - ψ: 4.11
118	404327.32	4088787.81	ψ - ω: 14.92
119	404321.54	4088783.89	ω - α: 14.92
120	404315.76	4088779.97	α - β: 2.80
121	404310.00	4088776.05	β - γ: 3.84
122	404304.22	4088772.13	γ - δ: 1.34
123	404298.44	4088768.21	δ - ε: 26.79
124	404292.66	4088764.29	ε - ζ: 6.04
125	404286.88	4088760.37	ζ - η: 3.04
126	404281.10	4088756.45	η - θ: 3.11
127	404275.32	4088752.53	θ - ι: 9.45
128	404269.54	4088748.61	ι - κ: 18.39
129	404263.76	4088744.69	κ - λ: 8.16
130	404257.98	4088740.77	λ - μ: 2.89
131	404252.20	4088736.85	μ - ν: 12.63
132	404246.42	4088732.93	ν - ξ: 12.43
133	404240.64	4088729.01	ξ - ο: 16.01
134	404234.86	4088725.09	ο - π: 7.19
135	404229.08	4088721.17	π - ρ: 13.81
136	404223.30	4088717.25	ρ - σ: 13.81
137	404217.52	4088713.33	σ - τ: 2.96
138	404211.74	4088709.41	τ - υ: 2.30
139	404205.96	4088705.49	υ - φ: 1.91
140	404200.18	4088701.57	φ - χ: 4.08
141	404194.40	4088697.65	χ - ψ: 4.08
142	404188.62	4088693.73	ψ - ω: 5.63
143	404182.84	4088689.81	ω - α: 4.11
144	404177.06	4088685.89	α - β: 14.92
145	404171.28	4088681.97	β - γ: 14.92
146	404165.50	4088678.05	γ - δ: 2.80
147	404159.72	4088674.13	δ - ε: 3.84
148	404153.94	4088670.21	ε - ζ: 1.34
149	404148.16	4088666.29	ζ - η: 26.79
150	404142.38	4088662.37	η - θ: 6.04
151	404136.60	4088658.45	θ - ι: 3.04
152	404130.82	4088654.53	ι - κ: 3.11
153	404125.04	4088650.61	κ - λ: 9.45
154	404119.26	4088646.69	λ - μ: 18.39
155	404113.48	4088642.77	μ - ν: 8.16
156	404107.70	4088638.85	ν - ξ: 2.89
157	404101.92	4088634.93	ξ - ο: 12.63
158	404096.14	4088631.01	ο - π: 12.43
159	404090.36	4088627.09	π - ρ: 16.01
160	404084.58	4088623.17	ρ - σ: 7.19
161	404078.80	4088619.25	σ - τ: 13.81
162	404073.02	4088615.33	τ - υ: 13.81
163	404067.24	4088611.41	υ - φ: 2.96
164	404061.46	4088607.49	φ - χ: 2.30
165	404055.68	4088603.57	χ - ψ: 1.91
166	404049.90	4088599.65	ψ - ω: 4.08
167	404044.12	4088595.73	ω - α: 4.08
168	404038.34	4088591.81	α - β: 5.63
169	404032.56	4088587.89	β - γ: 4.11
170	404026.78	4088583.97	γ - δ: 14.92
171	404021.00	4088580.05	δ - ε: 14.92
172	404015.22	4088576.13	ε - ζ: 2.80
173	404009.44	4088572.21	ζ - η: 3.84
174	404003.66	4088568.29	η - θ: 1.34
175	404000.00	4088564.37	θ - ι: 26.79
176	403996.34	4088560.45	ι - κ: 6.04