

TAMAYO DE JOE ALO KOTI AKTHOM EMASION: 111607 04 01			
CP	W	W	
52	272988.500	43460978.014	
53	272757.109	434283.0296	
54	272962.160	434272.930	
55	273040.390	434178.0303	
56	273040.390	434178.0303	
57	273021.004	4340070.306	
58	27314.4027	4340070.7988	
59	273021.004	4340070.7988	
60	273020.238	434042.2413	
61	27303.7994	434075.4045	
62	27303.7994	434075.4045	
63	274218.250	434075.732	
64	274218.250	434075.732	
65	27408.145	434118.015	
66	27408.145	434118.015	
67	274848.127	434175.9487	
68	274140.871	434186.765	
69	274140.871	434186.765	
70	274078.439	434027.3987	
71	274078.439	434027.3987	
72	274078.439	434027.3987	
73	274078.439	434027.3987	
74	274078.439	434027.3987	
75	274078.439	434027.3987	
76	274078.439	434027.3987	
77	274078.439	434027.3987	
78	274078.439	434027.3987	
79	274078.439	434027.3987	
80	274078.439	434027.3987	
81	274078.439	434027.3987	
82	274078.439	434027.3987	
83	274078.439	434027.3987	
84	274078.439	434027.3987	
85	274078.439	434027.3987	
86	274078.439	434027.3987	
87	274078.439	434027.3987	
88	274078.439	434027.3987	
89	274078.439	434027.3987	
90	274078.439	434027.3987	
91	274078.439	434027.3987	
92	274078.439	434027.3987	
93	274078.439	434027.3987	
94	274078.439	434027.3987	
95	274078.439	434027.3987	
96	274078.439	434027.3987	
97	274078.439	434027.3987	
98	274078.439	434027.3987	
99	274078.439	434027.3987	
100	274078.439	434027.3987	

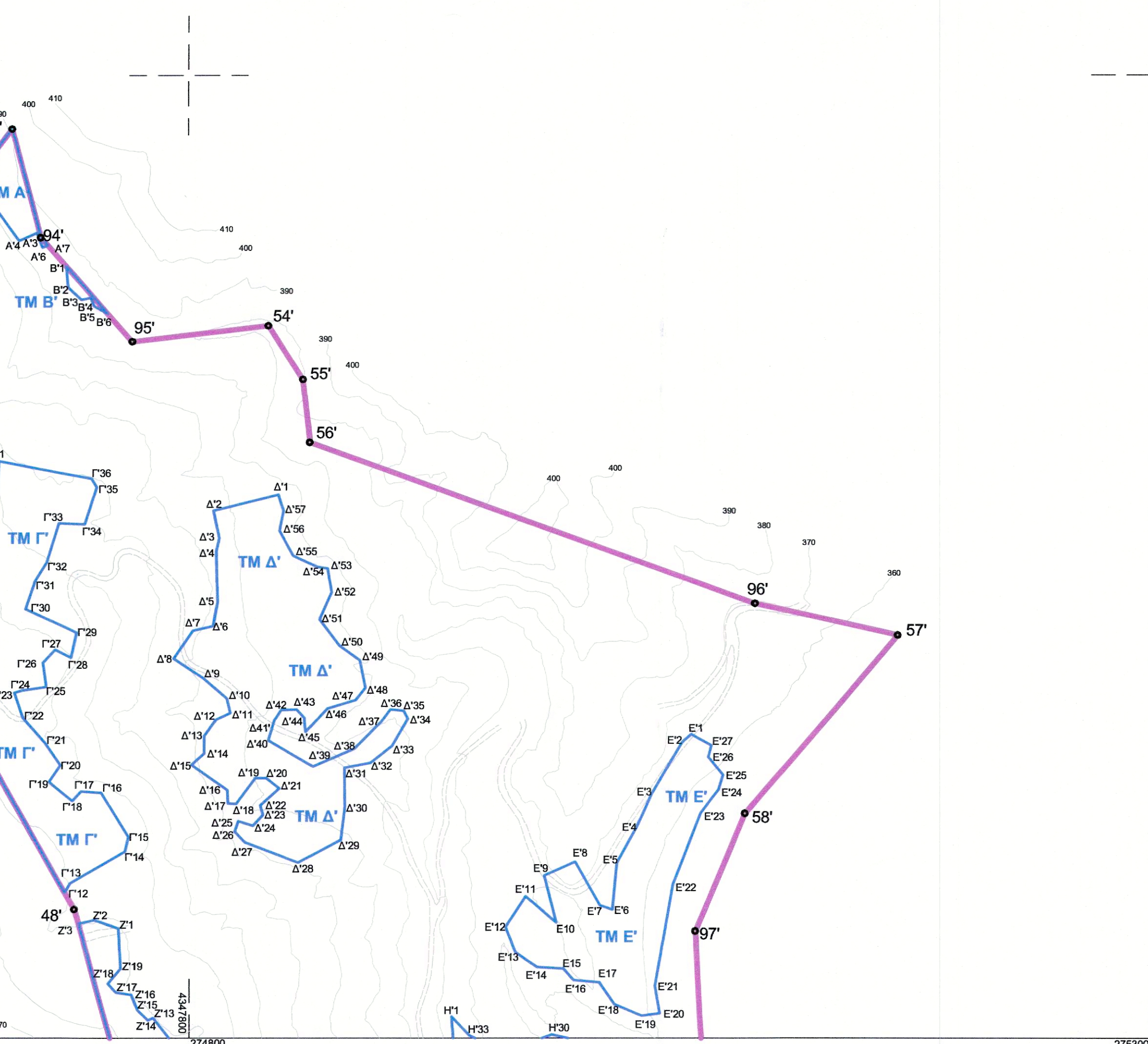
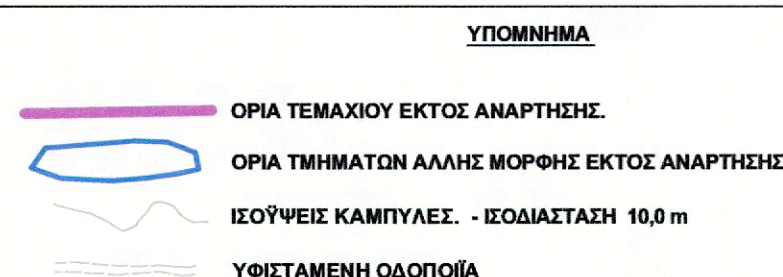
[illegible]

EMBALLUNG: 55470402 (u)				TMMMA N / GGR587				
KOPFSEIT	W	KOPFSEIT	X	W	KOPFSEIT	X	W	
35	272892.1850	3417291.6320	A107	273784.3521	345680.9447	V211	274022.4048	345731.7515
36	272892.7330	34172871.1222	A107	273800.7481	345680.1347	V212	274022.1127	345730.9452
37	272893.2860	34172878.1100	A107	273817.1401	345680.3247	V213	274021.8217	345730.7382
38	272893.2144	34172855.4500	A107	273846.2517	345680.4005	V214	273998.6141	345734.3386
39	272893.1780	34172855.4500	A107	273846.2517	345680.4005	V215	273998.6141	345734.3386
40	272893.8833	34172871.6845	A110	273846.2517	345680.1322	V216	273998.6141	345734.3386
41	272894.3002	34172871.6845	A110	273846.2517	345680.1322	V217	273998.6141	345734.3386
42	272894.3002	34172871.6845	A110	273846.2517	345680.1322	V218	273998.6141	345734.3386
43	272894.3339	34172871.6845	A110	273846.2517	345680.1322	V219	273998.6141	345734.3386
44	272894.3339	34172871.6845	A110	273846.2517	345680.1322	V220	273998.6141	345734.3386
45	272894.3339	34172871.6845	A110	273846.2517	345680.1322	V221	273998.6141	345734.3386
46	272894.3339	34172871.6845	A110	273846.2517	345680.1322	V222	273998.6141	345734.3386
47	272894.3339	34172871.6845	A110	273846.2517	345680.1322	V223	273998.6141	345734.3386
48	272894.3339	34172871.6845	A110	273846.2517	345680.1322	V224	273998.6141	345734.3386
49	272894.3339	34172871.6845	A110	273846.2517	345680.1322	V225	273998.6141	345734.3386
50	272894.3339	34172871.6845	A110	273846.2517	345680.1322	V226	273998.6141	345734.3386
51	272894.3339	34172871.6845	A110	273846.2517	345680.1322	V227	273998.6141	345734.3386
52	272894.3339	34172871.6845	A110	273846.2517	345680.1322	V228	273998.6141	345734.3386
53	272894.3339	34172871.6845	A110	273846.2517	345680.1322	V229	273998.6141	345734.3386
54	272894.3339	34172871.6845	A110	273846.2517	345680.1322	V230	273998.6141	345734.3386
55	272894.3339	34172871.6845	A110	273846.2517	345680.1322	V231	273998.6141	345734.3386
56	272894.3339	34172871.6845	A110	273846.2517	345680.1322	V232	273998.6141	345734.3386
57	272894.3339	34172871.6845	A110	273846.2517	345680.1322	V233	273998.6141	345734.3386
58	272894.3339	34172871.6845	A110	273846.2517	345680.1322	V234	273998.6141	345734.3386
59	272894.3339	34172871.6845	A110	273846.2517	345680.1322	V235	273998.6141	345734.3386
60	272894.3339	34172871.6845	A110	273846.2517	345680.1322	V236	273998.6141	345734.3386
61	272894.3339	34172871.6845	A110	273846.2517	345680.1322	V237	273998.6141	345734.3386
62	272894.3339	34172871.6845	A110	273846.2517	345680.1322	V238	273998.6141	345734.3386
63	272894.3339	34172871.6845	A110	273846.2517	345680.1322	V239	273998.6141	345734.3386
64	272894.3339	34172871.6845	A110	273846.2517	345680.1322	V240	273998.6141	345734.3386
65	272894.3339	34172871.6845	A110	273846.2517	345680.1322	V241	273998.6141	345734.3386
66	272894.3339	34172871.6845	A110	273846.2517	345680.1322	V242	273998.6141	345734.3386
67	272894.3339	34172871.6845	A110	273846.2517	345680.1322	V243	273998.6141	345734.3386
68	272894.3339	34172871.6845	A110	273846.2517	345680.1322	V244	273998.6141	345734.3386
69	272894.3339	34172871.6845	A110	273846.2517	345680.1322	V245	273998.6141	345734.3386
70	272894.3339	34172871.6845	A110	273846.2517	345680.1322	V246	273998.6141	345734.3386
71	272894.3339	34172871.6845	A110	273846.2517	345680.1322	V247	273998.6141	345734.3386
72	272894.3339	34172871.6845	A110	273846.2517	345680.1322	V248	273998.6141	345734.3386
73	272894.3339	34172871.6845	A110	273846.2517	345680.1322	V249	273998.6141	345734.3386
74	272894.3339	34172871.6845	A110	273846.2517	345680.1322	V250	273998.6141	345734.3386
75	272894.3339	34172871.6845	A110	273846.2517	345680.1322	V251	273998.6141	345734.3386
76	272894.3339	34172871.6845	A110	273846.2517	345680.1322	V252	273998.6141	345734.3386
77	272894.3339	34172871.6845	A110	273846.2517	345680.1322	V253	273998.6141	345734.3386
78	272894.3339	34172871.6845	A110	273846.2517	345680.1322	V254	273998.6141	345734.3386
79	272894.3339	34172871.6845	A110	273846.2517	345680.1322	V255	273998.6141	345734.3386
80	272894.3339	34172871.6845	A110	273846.2517	345680.1322	V256	273998.6141	345734.3386
81	272894.3339	34172871.6845	A110	273846.2517	345680.1322	V257	273998.6141	345734.3386
82	272894.3339	34172871.6845	A110	273846.2517	345680.1322	V258	273998.6141	345734.3386
83	272894.3339	34172871.6845	A110	273846.2517	345680.1322	V259	273998.6141	345734.3386
84	272894.3339	34172871.6845	A110	273846.2517	345680.1322	V260	273998.6141	345734.3386
85	272894.3339	34172871.6845	A110	273846.2517	345680.1322	V261	273998.6141	345734.3386
86	272894.3339	34172871.6845	A110	273846.2517	345680.1322	V262	273998.6141	345734.3386
87	272894.3339	34172871.6845	A110	273846.2517	345680.1322	V263	273998.6141	345734.3386
88	272894.3339	34172871.6845	A110	273846.2517	345680.1322	V264	273998.6141	345734.3386
89	272894.3339	34172871.6845	A110	273846.2517	345680.1322	V265	273998.6141	345734.3386
90	272894.3339	34172871.6845	A110	273846.2517	345680.1322	V266	273998.6141	345734.3386
91	272894.3339	34172871.6845	A110	273846.2517	345680.1322	V267	273998.6141	345734.3386
92	272894.3339	34172871.6845	A110	273846.2517	345680.1322	V268	273998.6141	345734.3386
93	272894.3339	34172871.6845	A110	273846.2517	345680.1322	V269	273998.6141	345734.3386
94	272894.3339	34172871.6845	A110	273846.2517	345680.1322	V270	273998.6141	345734.3386
95	272894.3339	34172871.6845	A110	273846.2517	345680.1322	V271	273998.6141	345734.3386
96	272894.3339	34172871.6845	A110	273846.2517	345680.1322	V272	273998.6141	345734.3386
97	272894.3339	34172871.6845	A110	273846.2517	345680.1322	V273	273998.6141	345734.3386
98	272894.3339	34172871.6845	A110	273846.2517	345680.1322	V274	273998.6141	345734.3386
99	272894.3339	34172871.6845	A110	273846.2517	345680.1322	V275	273998.6141	345734.3386
100	272894.3339	34172871.6845	A110	273846.2517	345680.1322	V276	273998.6141	345734.3386

		KOPNICE	
I GORŠT		51	2/4
	W	53	2/4
	W	54	2/4
1750	434215.5330	55	2/4
1780	434227.3430	56	2/4
1800	434239.3530	57	2/4
1820	434245.3731	58	2/4
1840	434251.3830	59	2/4
1860	434264.4030	60	2/4
1880	434276.4130	61	2/4
1900	434288.4332	62	2/4
1920	434294.4431	63	2/4
1940	434306.4631	64	2/4
1960	434318.4731	65	2/4
1980	434330.4932	66	2/4
2000	434342.5032	67	2/4
I GORŠT		68	2/4
	W	69	2/4
	W	70	2/4
2010	434354.5131	71	2/4
2030	434366.5332	72	2/4
2050	434378.5432	73	2/4
2070	434386.5532	74	2/4
2090	434398.5733	75	2/4
2110	434410.5833	76	2/4
2130	434422.5933	77	2/4
2150	434434.6033	78	2/4
2170	434446.6234	79	2/4
2190	434458.6334	80	2/4
I GORŠT		81	2/4
	W	82	2/4
	W	83	2/4
2200	434470.6433	84	2/4
2220	434482.6634	85	2/4
2240	434494.6734	86	2/4
2260	434506.6834	87	2/4
2280	434518.7035	88	2/4
2300	434530.7135	89	2/4
2320	434542.7235	90	2/4
2340	434554.7436	91	2/4
2360	434566.7536	92	2/4
2380	434578.7737	93	2/4
2400	434590.7837	94	2/4
2420	434602.8038	95	2/4
2440	434614.8138	96	2/4
2460	434626.8339	97	2/4
2480	434638.8439	98	2/4
2500	434650.8640	99	2/4
2520	434662.8740	100	2/4
I GORŠT		101	2/4
	W	102	2/4
	W	103	2/4
2530	434674.8941	104	2/4
2550	434686.9041	105	2/4
2570	434698.9242	106	2/4
2590	434710.9342	107	2/4
2610	434722.9543	108	2/4
2630	434734.9643	109	2/4
2650	434746.9844	110	2/4
2670	434758.9944	111	2/4
2690	434770.0145	112	2/4
2710	434782.0245	113	2/4
2730	434794.0446	114	2/4
2750	434806.0546	115	2/4
2770	434818.0747	116	2/4
2790	434830.0847	117	2/4
2810	434842.1048	118	2/4
2830	434854.1148	119	2/4
2850	434866.1349	120	2/4
2870	434878.1449	121	2/4
2890	434890.1650	122	2/4
2910	434902.1750	123	2/4
2930	434914.1951	124	2/4
2950	434926.2051	125	2/4
2970	434938.2252	126	2/4
2990	434950.2352	127	2/4
3010	434962.2553	128	2/4
3030	434974.2653	129	2/4
3050	434986.2854	130	2/4
3070	434998.2954	131	2/4
3090	435010.3155	132	2/4
3110	435022.3255	133	2/4
3130	435034.3355	134	2/4
3150	435046.3556	135	2/4
3170	435058.3656	136	2/4
3190	435070.3857	137	2/4
3210	435082.3957	138	2/4
3230	435094.4158	139	2/4
3250	435106.4258	140	2/4
3270	435118.4459	141	2/4
3290	435130.4559	142	2/4
3310	435142.4760	143	2/4
3330	435154.4860	144	2/4
3350	435166.5061	145	2/4
3370	435178.5161	146	2/4
3390	435190.5362	147	2/4
3410	435202.5462	148	2/4
3430	435214.5663	149	2/4
3450	435226.5763	150	2/4
3470	435238.5964	151	2/4
3490	435250.6064	152	2/4
3510	435262.6265	153	2/4
3530	435274.6365	154	2/4
3550	435286.6566	155	2/4
3570	435298.6666	156	2/4
3590	435310.6867	157	2/4
3610	435322.6967	158	2/4
3630	435334.7168	159	2/4
3650	435346.7268	160	2/4
3670	435358.7469	161	2/4
3690	435370.7569	162	2/4
3710	435382.7770	163	2/4
3730	435394.7870	164	2/4
3750	435406.8071	165	2/4
3770	435418.8171	166	2/4
3790	435430.8372	167	2/4
3810	435442.8472	168	2/4
3830	435454.8673	169	2/4
3850	435466.8773	170	2/4
3870	435478.8974	171	2/4
3890	435490.9074	172	2/4
3910	435502.9275	173	2/4
3930	435514.9375	174	2/4
3950	435526.9576	175	2/4
3970	435538.9676	176	2/4
3990	435550.9877	177	2/4
4010	435562.9977	178	2/4
4030	435575.0178	179	2/4
4050	435587.0278	180	2/4
4070	435599.0479	181	2/4
4090	435611.0579	182	2/4
4110	435623.0780	183	2/4
4130	435635.0880	184	2/4
4150	435647.1081	185	2/4
4170	435659.1181	186	2/4
4190	435671.1382	187	2/4
4210	435683.1482	188	2/4
4230	435695.1683	189	2/4
4250	435707.1783	190	2/4
4270	435719.1984	191	2/4
4290	435731.2084	192	2/4
4310	435743.2285	193	2/4
4330	435755.2385	194	2/4
4350	435767.2586	195	2/4
4370	435779.2686	196	2/4
4390	435791.2887	197	2/4
4410	435803.2987	198	2/4
4430	435815.3188	199	2/4
4450	435827.3288	200	2/4
4470	435839.3489	201	2/4
4490	435851.3589	202	2/4
4510	435863.3790	203	2/4
4530	435875.3890	204	2/4
4550	435887.4091	205	2/4
4570	435899.4191	206	2/4
4590	435911.4392	207	2/4
4610	435923.4492	208	2/4
4630	435935.4693	209	2/4
4650	435947.4793	210	2/4
4670	435959.4994	211	2/4
4690	435971.5094	212	2/4
4710	435983.5295	213	2/4
4730	435995.5395	214	2/4
4750	436007.5596	215	2/4
4770	436019.5696	216	2/4
4790	436031.5897	217	2/4
4810	436043.5997	218	2/4
4830	436055.6198	219	2/4
4850	436067.6298	220	2/4
4870	436079.6499	221	2/4
4890	436091.6599	222	2/4
4910	436103.6700	223	2/4
4930	436115.6800	224	2/4
4950	436127.6900	225	2/4
4970	436139.7101	226	2/4
4990	436151.7201	227	2/4
5010	436163.7301	228	2/4
5030	436175.7402	229	2/4
5050	436187.7502	230	2/4
5070	436199.7602	231	2/4
5090	436211.7703	232	2/4
5110	436223.7803	233	2/4
5130	436235.7903	234	2/4
5150	436247.8004	235	2/4
5170	436259.8104	236	2/4
5190	436271.8204	237	2/4
5210	436283.8305	238	2/4
5230	436295.8405	239	2/4
5250	436307.8505	240	2/4
5270	436319.8606	241	2/4
5290	436331.8706	242	2/4
5310	436343.8806	243	2/4
5330	436355.8907	244	2/4
5350	436367.9007	245	2/4
5370	436379.9107	246	2/4
5390	436391.9208	247	2/4
5410	436403.9308	248	2/4
5430	436415.9408	249	2/4
5450	436427.9509	250	2/4
5470	436439.9609	251	2/4
5490	436451.9709	252	2/4
5510	436463.9810	253	2/4
5530	436475.9910	254	2/4
5550	436487.0010	255	2/4
5570	436499.0111	256	2/4
5590	436511.0211	257	2/4
5610	436523.0311	258	2/4
5630	436535.0412	259	2/4
5650	436547.0512	260	2/4
5670	436559.0612	261	2/4
5690	436571.0712	262	2/4
5710	436583.0813	263	2/4
5730	436595.0913	264	2/4
5750	436607.1013	265	2/4
5770	436619.1114	266	2/4
5790	436631.1214	267	2/4
5810	436643.1314	268	2/4
5830	436655.1415	269	2/4
5850	436667.1515	270	2/4
5870	436679.1615	271	2/4
5890	436691.1716	272	2/4
5910	436703.1816	273	2/4
5930	436715.1917	274	2/4
5950	436727.2017	275	2/4
5970	436739.2117	276	2/4
5990	436751.2218	277	2/4
6010	436763.2318	278	2/4
6030	436775.2419	279	2/4
6050	436787.2519	280	2/4
6070	436799.2619	281	2/4
6090	436811.2720	282	2/4
6110	436823.2820	283	2/4
6130	436835.2920	284	2/4
6150	436847.3021	285	2/4
6170	436859.3121	286	2/4
6190	436871.3222	287	2/4
6210	436883.3322	288	2/4
6230	436895.3422	289	2/4
6250	436907.3523	290	2/4
6270	436919.3623	291	2/4
6290	436931.3723	292	2/4
6310	436943.3824	293	2/4
6330	436955.3924	294	2/4
6350	436967.4024	295	2/4
6370	436979.4125	296	2/4
6390	436991.4225	297	2/4
6410	437003.4325	298	2/4
6430	437015.4426	299	2/4
6450	437027.4526	300	2/4
6470	437039.4627	301	2/4
6490	437051.4727	302	2/4
6510	437063.4827	303	2/4
6530	437075.4928	304	2/4
6550	437087.5028	305	2/4
6570	437099.5129	306	2/4
6590	437111.5229	307	2/4
6610	437123.5329	308	2/4
6630	437135.5430	309	2/4
6650	437147.5530	310	2/4
6670	437159.5631	311	2/4
6690	437171.5731	312	2/4
6710	437183.5831	313	2/4
6730	437195.5932	314	2/4
6750	437207.6032	315	2/4
6770	437219.6132	316	2/4
6790	437231.6233	317	2/4
6810	437243.6333	318	2/4
6830	437255.6433	319	2/4
6850	437267.6534	320	2/4
6870	437279.6634	321	2/4
6890	437291.6734	322	2/4
6910	437303.6835	323	2/4
6930	437315.6935	324	2/4
6950	437327.7035	325	2/4
6970	437339.7136	326	2/4
6990	437351.7236	327	2/4
7010	437363.7337	328	2/4
7030	437375.7437	329	2/4
7050	437387.7537	330	2/4
7070	437399.		

K00	274657.830	3472180.85	3472180.85
K01	274657.830	3472180.85	3472180.85
K02	274654.923	3472239.48	3472239.48
K03	274529.128	3472765.443	3472765.443
K04	274529.128	3472765.443	3472765.443
K05	274526.088	3472816.680	3472816.680
K06	274526.088	3472816.680	3472816.680
K07	274522.618	3473233.103	3473233.103
K08	274522.618	3473233.103	3473233.103
K09	274520.936	3473302.716	3473302.716
K10	274520.936	3473302.716	3473302.716
K11	274517.716	3473322.674	3473322.674
K12	274517.716	3473322.674	3473322.674
K13	274517.047	3473325.864	3473325.864
K14	274517.047	3473325.864	3473325.864
K15	274516.488	3473381.140	3473381.140
K16	274517.019	3473531.870	3473531.870
K17	274517.019	3473531.870	3473531.870
K18	274516.181	3473534.112	3473534.112
K19	274516.181	3473534.112	3473534.112
K20	274517.951	3473624.677	3473624.677
K21	274517.951	3473624.677	3473624.677
K22	274517.968	3473672.725	3473672.725
K23	274517.968	3473672.725	3473672.725
K24	274518.312	3473723.508	3473723.508
K25	274518.312	3473723.508	3473723.508
K26	274517.968	3473723.508	3473723.508
K27	274517.968	3473723.508	3473723.508
K28	274517.968	3473723.508	3473723.508
K29	274517.968	3473723.508	3473723.508
K30	274517.968	3473723.508	3473723.508
K31	274517.968	3473723.508	3473723.508
K32	274517.968	3473723.508	3473723.508
K33	274517.968	3473723.508	3473723.508
K34	274517.968	3473723.508	3473723.508
K35	274517.968	3473723.508	3473723.508
K36	274517.968	3473723.508	3473723.508
K37	274517.968	3473723.508	3473723.508
K38	274517.968	3473723.508	3473723.508
K39	274517.968	3473723.508	3473723.508
K40	274517.968	3473723.508	3473723.508
K41	274517.968	3473723.508	3473723.508
K42	274517.968	3473723.508	3473723.508
K43	274517.968	3473723.508	3473723.508
K44	274517.968	3473723.508	3473723.508
K45	274517.968	3473723.508	3473723.508
K46	274517.968	3473723.508	3473723.508
K47	274517.968	3473723.508	3473723.508
K48	274517.968	3473723.508	3473723.508
K49	274517.968	3473723.508	3473723.508
K50	274517.968	3473723.508	3473723.508
K51	274517.968	3473723.508	3473723.508
K52	274517.968	3473723.508	3473723.508
K53	274517.968	3473723.508	3473723.508
K54	274517.968	3473723.508	3473723.508
K55	274517.968	3473723.508	3473723.508
K56	274517.968	3473723.508	3473723.508
K57	274517.968	3473723.508	3473723.508
K58	274517.968	3473723.508	3473723.508
K59	274517.968	3473723.508	3473723.508
K60	274517.968	3473723.508	3473723.508
K61	274517.968	3473723.508	3473723.508
K62	274517.968	3473723.508	3473723.508
K63	274517.968	3473723.508	3473723.508
K64	274517.968	3473723.508	3473723.508
K65	274517.968	3473723.508	3473723.508
K66	274517.968	3473723.508	3473723.508
K67	274517.968	3473723.508	3473723.508
K68	274517.968	3473723.508	3473723.508
K69	274517.968	3473723.508	3473723.508
K70	274517.968	3473723.508	3473723.508
K71	274517.968	3473723.508	3473723.508
K72	274517.968	3473723.508	3473723.508
K73	274517.968	3473723.508	3473723.508
K74	274517.968	3473723.508	3473723.508
K75	274517.968	3473723.508	3473723.508
K76	274517.968	3473723.508	3473723.508
K77	274517.968	3473723.508	3473723.508
K78	274517.968	3473723.508	3473723.508
K79	274517.968	3473723.508	3473723.508
K80	274517.968	3473723.508	3473723.508
K81	274517.968	3473723.508	3473723.508
K82	274517.968	3473723.508	3473723.508
K83	274517.968	3473723.508	3473723.508
K84	274517.968	3473723.508	3473723.508
K85	274517.968	3473723.508	3473723.508
K86	274517.968	3473723.508	3473723.508
K87	274517.968	3473723.508	3473723.508
K88	274517.968	3473723.508	3473723.508
K89	274517.968	3473723.508	3473723.508
K90	274517.968	3473723.508	3473723.508
K91	274517.968	3473723.508	3473723.508
K92	274517.968	3473723.508	3473723.508
K93	274517.968	3473723.508	3473723.508
K94	274517.968	3473723.508	3473723.508
K95	274517.968	3473723.508	3473723.508
K96	274517.968	3473723.508	3473723.508
K97	274517.968	3473723.508	3473723.508
K98	274517.968	3473723.508	3473723.508
K99	274517.968	3473723.508	3473723.508
K100	274517.968	3473723.508	3473723.508
EMBAPOD: 100.00%			
KOPEVCE	χ^2	ψ	
H1	274636.356	3478191.204	3478191.204
H2	274638.521	3478205.6319	3478205.6319
H3	274638.521	3478205.6319	3478205.6319
H4	274646.510	3478177.1860	3478177.1860
H5	274646.510	3478177.1860	3478177.1860
H6	274642.799	3478276.6126	3478276.6126
H7	274649.340	3478174.6876	3478174.6876
H8	274649.340	3478174.6876	3478174.6876
H9	274650.779	3478217.3860	3478217.3860
H10	274650.779	3478217.3860	3478217.3860
H11	274650.958	3478269.6494	3478269.6494
H12	274650.958	3478269.6494	3478269.6494
H13	274650.534	3478730.0051	3478730.0051
H14	274650.534	3478730.0051	3478730.0051
H15	274654.318	3478652.8263	3478652.8263
H16	274654.318	3478652.8263	3478652.8263
H17	274654.285	3478758.2028	3478758.2028
H18	274654.259	3478757.6105	3478757.6105
H19	274654.259	3478757.6105	3478757.6105
H20	274656.923	3478763.2811	3478763.2811
H21	274656.923	3478763.2811	3478763.2811
H22	274657.381	3478756.8088	3478756.8088
H23	274657.381	3478756.8088	3478756.8088
H24	274651.954	3478771.7840	3478771.7840
H25	274651.954	3478771.7840	3478771.7840
H26	274651.954	3478771.7840	3478771.7840
H27	274651.954	3478771.7840	3478771.7840
H28	274651.954	3478771.7840	3478771.7840
H29	274651.954	3478771.7840	3478771.7840
H30	274651.954	3478771.7840	3478771.7840
H31	274651.954	3478771.7840	3478771.7840
H32	274651.954	3478771.7840	3478771.7840
H33	274651.954	3478771.7840	3478771.7840
H34	274651.954	3478771.7840	3478771.7840
H35	274651.954	3478771.7840	3478771.7840
H36	274651.954	3478771.7840	3478771.7840
H37	274651.954	3478771.7840	3478771.7840
H38	274651.954	3478771.7840	3478771.7840
H39	274651.954	3478771.7840	3478771.7840
H40	274651.954	3478771.7840	3478771.7840
H41	274651.954	3478771.7840	3478771.7840
H42	274651.954	3478771.7840	3478771.7840
H43	274651.954	3478771.7840	3478771.7840
H44	274651.954	3478771.7840	3478771.7840
H45	274651.954	3478771.7840	3478771.7840
H46	274651.954	3478771.7840	3478771.7840
H47	274651.954	3478771.7840	3478771.7840
H48	274651.954	3478771.7840	3478771.7840
H49	274651.954	3478771.7840	3478771.7840
H50	274651.954	3478771.7840	3478771.7840
H51	274651.954	3478771.7840	3478771.7840
H52	274651.954	3478771.7840	3478771.7840
H53	274651.954	3478771.7840	3478771.7840
H54	274651.954	3478771.7840	3478771.7840
H55	274651.954	3478771.7840	3478771.7840
H56	274651.954	3478771.7840	3478771.7840
H57	274651.954	3478771.7840	3478771.7840
H58	274651.954	3478771.7840	3478771.7840
H59	274651.954	3478771.7840	3478771.7840
H60	274651.954	3478771.7840	3478771.7840
H61	274651.954	3478771.7840	3478771.7840
H62	274651.954	3478771.7840	3478771.7840
H63	274651.954	3478771.7840	3478771.7840
H64	274651.954	3478771.7840	3478771.7840
H65	274651.954	3478771.7840	3478771.7840
H66	274651.954	3478771.7840	3478771.7840
H67	274651.954	3478771.7840	3478771.7840
H68	274651.954	3478771.7840	3478771.7840
H69	274651.954	3478771.7840	3478771.7840
H70	274651.954	3478771.7840	3478771.7840
H71	274651.954	3478771.7840	3478771.7840
H72	274651.954	3478771.7840	3478771.7840
H73	274651.954	3478771.7840	3478771.7840
H74	274651.954	3478771.7840	3478771.7840
H75	274651.954	3478771.7840	3478771.7840
H76	274651.954	3478771.7840	3478771.7840
H77	274651.954	3478771.7840	3478771.7840
H78	274651.954	3478771.7840	3478771.7840
H79	274651.954	3478771.7840	3478771.7840
H80	274651.954	3478771.7840	3478771.7840
H81	274651.954	3478771.7840	3478771.7840
H82	274651.954	3478771.7840	3478771.7840
H83	274651.954	3478771.7840	3478771.7840
H84	274651.954	3478771.7840	3478771.7840
H85	274651.954	3478771.7840	3478771.7840
H86	274651.954	3478771.7840	3478771.7840
H87	274651.954	3478771.7840	3478771.7840
H88	274651.954	3478771.7840	3478771.7840
H89	274651.954	3478771.7840	3478771.7840
H90	274651.954	3478771.7840	3478771.7840
H91	274651.954	3478771.7840	3478771.7840
H92	274651.954	3478771.7840	3478771.7840
H93	274651.954	3478771.7840	3478771.7840
H94	274651.954	3478771.7840	3478771.7840
H95	274651.954	3478771.7840	3478771.7840
H96	274651.954	3478771.7840	3478771.7840
H97	274651.954	3478771.7840	3478771.7840
H98	274651.954	3478771.7840	3478771.7840
H99	274651.954	3478771.7840	3478771.7840
H100	274651.954	3478771.7840	3478771.7840
EMBAPOD: 100.00%			
KOPEVCE	χ^2	ψ	
O1	275247.248	3478706.143	3478706.143
O2	275247.248	3478706.143	3478706.143
O3	275262.073	3478109.052	3478109.052
O4	275262.073	3478109.052	3478109.052
O5	275266.106	3478258.103	3478258.103
O6	275266.106	3478258.103	3478258.103
O7	275266.410	3478107.4049	3478107.4049
O8	27		

EMBAION: 8077.34 m ² GRSRST		
KOPPEX	α	ψ
N1	273410-8900	4340070.79
N2	273415-2746	4340072.98
N3	273416-2746	4340073.98
M3	273440-8831	4340085.65
M4	273447-3008	4340088.63
M5	273447-3008	4340088.63
M6	273449-9209	4340081.39
M7	273449-9209	4340081.39
M8	273500-6236	434104.14
M9	273500-6236	434104.14
M10	273504-0200	434215.09
M11	273505-7236	434215.09
M12	273505-7236	434215.09
M13	273505-7236	434215.09
M14	273505-7236	434215.09
M15	273505-7236	434215.09
M16	273505-7236	434215.09
M17	273505-7236	434215.09
EMBAION: 8584.94 m ² GRSRST		
KOPPEX	α	ψ
N1	273370-7802	434074.03
N2	273373-8654	434071.02
N3	273373-8654	434071.02
M3	273358-6899	433967.70
M4	273358-6899	433967.70
M5	273358-6899	433967.70
M6	273358-6899	433967.70
M7	273358-6899	433967.70
M8	273358-6899	433967.70
M9	273358-6899	433967.70
M10	273358-6899	433967.70
M11	273358-6899	433967.70
M12	273358-6899	433967.70
M13	273358-6899	433967.70
M14	273358-6899	433967.70
M15	273358-6899	433967.70
M16	273406-4661	434207.35
M17	273406-4661	434207.35
M18	273406-4661	434207.35
EMBAION: 10045.98 m ² GRSRST		
KOPPEX	α	ψ
N1	273191-8000	4346689.02
N2	273191-8000	4346689.02
N3	273207-7465	4346681.58
N4	273212-2678	4346691.53
N5	273224-2200	4346697.22
N6	273224-2200	4346697.22
N7	273224-2200	4346697.22
N8	273224-2200	4346697.22
N9	273224-2200	4346697.22
N10	273224-2200	4346697.22
N11	273224-2200	4346697.22
N12	273224-2200	4346697.22
N13	273224-2200	4346697.22
N14	273224-2200	4346697.22
N15	273224-2200	4346697.22
N16	273224-2200	4346697.22
N17	273224-2200	4346697.22
N18	273224-2200	4346697.22
N19	273224-2200	4346697.22
N20	273224-2200	4346697.22
N21	273224-2200	4346697.22
N22	273224-2200	4346697.22
N23	273224-2200	4346697.22
N24	273224-2200	4346697.22
N25	273224-2200	4346697.22
N26	273224-2200	4346697.22
N27	273224-2200	4346697.22
N28	273224-2200	4346697.22
N29	273224-2200	4346697.22
N30	273224-2200	4346697.22
N31	273224-2200	4346697.22
N32	273224-2200	4346697.22
N33	273224-2200	4346697.22
N34	273224-2200	4346697.22
N35	273224-2200	4346697.22
N36	273224-2200	4346697.22
N37	273224-2200	4346697.22
N38	273224-2200	4346697.22
N39	273224-2200	4346697.22
N40	273224-2200	4346697.22
N41	273224-2200	4346697.22
N42	273224-2200	4346697.22
N43	273224-2200	4346697.22
N44	273224-2200	4346697.22
N45	273224-2200	4346697.22
N46	273224-2200	4346697.22
N47	273224-2200	4346697.22
N48	273224-2200	4346697.22
N49	273224-2200	4346697.22
N50	273224-2200	4346697.22
N51	273224-2200	4346697.22
N52	273224-2200	4346697.22
N53	273224-2200	4346697.22
N54	273224-2200	4346697.22
N55	273224-2200	4346697.22
N56	273224-2200	4346697.22
N57	273224-2200	4346697.22
N58	273224-2200	4346697.22
N59	273224-2200	4346697.22
N60	273224-2200	4346697.22
N61	273224-2200	4346697.22
N62	273224-2200	4346697.22
N63	273224-2200	4346697.22
N64	273224-2200	4346697.22
N65	273224-2200	4346697.22
N66	273224-2200	4346697.22
N67	273224-2200	4346697.22
N68	273224-2200	4346697.22
N69	273224-2200	4346697.22
N70	273224-2200	4346697.22
N71	273224-2200	4346697.22
N72	273224-2200	4346697.22
N73	273224-2200	4346697.22
N74	273224-2200	4346697.22
N75	273224-2200	4346697.22
N76	273224-2200	4346697.22
N77	273224-2200	4346697.22
N78	273224-2200	4346697.22
N79	273224-2200	4346697.22
N80	273224-2200	4346697.22
N81	273224-2200	4346697.22
N82	273224-2200	4346697.22
N83	273224-2200	4346697.22
N84	273224-2200	4346697.22
N85	273224-2200	4346697.22
N86	273224-2200	4346697.22
N87	273224-2200	4346697.22
N88	273224-2200	4346697.22
N89	273224-2200	4346697.22
N90	273224-2200	4346697.22
N91	273224-2200	4346697.22
N92	273224-2200	4346697.22
N93	273224-2200	4346697.22
N94	273224-2200	4346697.22
N95	273224-2200	4346697.22
N96	273224-2200	4346697.22
N97	273224-2200	4346697.22
N98	273224-2200	4346697.22
N99	273224-2200	4346697.22
N100	273224-2200	4346697.22
N101	273224-2200	4346697.22
N102	273224-2200	4346697.22
N103	273224-2200	4346697.22
N104	273224-2200	4346697.22
N105	273224-2200	4346697.22
N106	273224-2200	4346697.22
N107	273224-2200	4346697.22
N108	273224-2200	4346697.22
N109	273224-2200	4346697.22
N110	273224-2200	4346697.22
N111	273224-2200	4346697.22
N112	273224-2200	4346697.22
N113	273224-2200	4346697.22
N114	273224-2200	4346697.22
N115	273224-2200	4346697.22
N116	273224-2200	4346697.22
N117	273224-2200	4346697.22
N118	273224-2200	4346697.22
N119	273224-2200	4346697.22
N120	273224-2200	4346697.22
N121	273224-2200	4346697.22
N122	273224-2200	4346697.22
N123	273224-2200	4346697.22
N124	273224-2200	4346697.22
N125	273224-2200	4346697.22
N126	273224-2200	4346697.22
N127	273224-2200	4346697.22
N128	273224-2200	4346697.22
N129	273224-2200	4346697.22
N130	273224-2200	4346697.22
N131	273224-2200	4346697.22
N132	273224-2200	4346697.22
N133	273224-2200	4346697.22
N134	273224-2200	4346697.22
N135	273224-2200	4346697.22
N136	273224-2200	4346697.22
N137	273224-2200	4346697.22
N138	273224-2200	4346697.22
N139	273224-2200	4346697.22
N140	273224-2200	4346697.22
N141	273224-2200	4346697.22
N142	273224-2200	4346697.22
N143	273224-2200	4346697.22
N144	273224-2200	4346697.22
N145	273224-2200	4346697.22
N146	273224-2200	4346697.22
N147	273224-2200	4346697.22
N148	273224-2200	4346697.22
N149	273224-2200	4346697.22
N150	273224-2200	4346697.22
N151	273224-2200	4346697.22
N152	273224-2200	4346697.22
N153	273224-2200	4346697.22
N154	273224-2200	4346697.22
N155	273224-2200	4346697.22
N156	273224-2200	4346697.22
N157	273224-2200	4346697.22
N158	273224-2200	4346697.22
N159	273224-2200	4346697.22
N160	273224-2200	4346697.22
N161	273224-2200	4346697.22
N162	273224-2200	4346697.22
N163	273224-2200	4346697.22
N164	273224-2200	4346697.22
N165	273224-2200	4346697.22
N166	273224-2200	4346697.22
N167	273224-2200	4346697.22
N168	273224-2200	4346697.22
N169	273224-2200	4346697.22
N170	273224-2200	4346697.22
N171	273224-2200	4346697.22
N172	273224-2200	4346697.22
N173	273224-2200	4346697.22
N174	273224-2200	4346697.22
N175	273224-2200	4346697.22
N176	273224-2200	4346697.22
N177	273224-2200	4346697.22
N178	273224-2200	4346697.22
N179	273224-2200	4346697.22
N180	273224-2200	4346697.22
N181	273224-2200	4346697.22
N182	273224-2200	4346697.22
N183	273224-2200	4346697.22
N184	273224-2200	4346697.22
N185	273224-2200	4346697.22
N186	273224-2200	4346697.22
N187	273224-2200	4346697.22
N188	273224-2200	4346697.22
N189	273224-2200	4346697.22
N190	273224-2200	4346697.22
N191	273224-2200	4346697.22
N192	273224-2200	4346697.22
N193	273224-2200	4346697.22
N194	273224-2200	4346697.22
N195	273224-2200	4346697.22
N196	273224-2200	4346697.22
N197	273224-2200	4346697.22
N198	273224-2200	4346697.22
N199	273224-2200	4346697.22
N200	273224-2200	4346697.22
N201	273224-2200	4346697.22
N202	273224-2200	4346697.22
N203	273224-2200	4346697.22
N204	273224-2200	4346697.22
N205	273224-2200	4346697.22
N206	273224-2200	4346697.22
N207	273224-2200	4346697.22
N208	273224-2200	4346697.22
N209	273224-2200	4346697.22
N210	273224-2200	4346697.22
N211	273224-2200	4346697.22
N212	273224-2200	4346697.22
N213	273224-2200	4346697.22
N214	273224-2200	4346697.22
N215	273224-2200	4346697.22
N216	273224-2200	4346697.22
N217	273224-2200	4346697.22
N218	273224-2200	4346697.22
N219	273224-2200	4346697.22
N220	273224-2200	4346697.22
N221	273224-2200	4346697.22
N222	273224-2200	4346697.22
N223	273224-2200	4346697.22
N224	273224-2200	4346697.22
N225	273224-2200	4346697.22
N226	273224-2200	4346697.22
N227	273224-2200	4346697.22
N228	273224-2200	4346697.22
N229	273224-2200	4346697.22
N230	273224-2200	4346697.22
N231	273224-2200	4346697.22
N232	273224-2200	4346697.22
N233	273224-2200	4346697.22
N234	273224-2200	4346697.22
N235	273224-2200	4346697.22
N236	273224-2200	4346697.22
N237	273224-2200	4346697.22
N238	273224-2200	4346697.22
N239	273224-2200	4346697.22
N240	273224-2200	4346697.22
N241	273224-2200	4346697.22
N242	273224-2200	4346697.22
N243	273224-2200	4346697.22
N244	273224-2200	4346697.22
N245	273224-2200	4346697.22
N246	273224-2200	4346697.22
N247	273224-2200	4346697.22
N248	273224-2200	4346697.22
N249	273224-2200	4346697.22
N250	273224-2200	4346697.22
N251	273224-2200	



Aριθμός No	Hμ.νία Date	Περιγραφή Description	Μέληση Design	Έλεγχος Checked	Υπογραφή Approval				
ΑΝΑΘΕΩΡΗΣΗ / REVISIONS									
ΚΥΡΙΟΣ ΤΟΥ ΕΡΓΟΥ: PROJECT PROMOTER:									
<div style="text-align: center;"><p>ΤΕΡΝΑ ΕΝΕΡΓΕΙΑΚΗ ΟΜΙΛΟΣ ΦΕΡ ΤΕΡΝΑ</p></div>									
Τίτλος Έργου: Project Title:									
<div style="text-align: center;">ΥΔΡΟΗΛΕКТΙΚΟ ΕΡΓΟ "ΑΥΛΑΚΙ" επί του ποταμού Αχελώυ</div> <div style="text-align: center;">HYDROPOWER PLANT "AVLAKI" on Acheloos river</div>									
Όταν:									
							ΤΕΜΑΧΙΟ Ε2 ΣΤΙΣ Τ.Κ. ΜΗΛΙΑΝΩΝ ΚΑΙ ΠΗΓΩΝ Π.Ε. ΑΡΤΑΣ.		
Τίτλος Σχεδίου: Drawing Title:							Αριθμός Σχεδίου Drawing No		
ΤΟΠΟΓΡΑΦΙΚΟ ΔΙΑΓΡΑΜΜΑ							E2/T1		
							Κλίμακα / Scale		
							1:2.000		
ΣΥΝΤΑΞΗ / DESIGN:			Όνομα / Name			Υπογραφή / Signature			
ΓΙΑ ΤΟΝ ΚΥΡΙΟ ΤΟΥ ΕΡΓΟΥ / FOR THE PROJECT PROMOTER:			Δ. ΛΙΝΑΡΔΑΤΟΣ D. LINARDATOS			Ι. ΖΑΛΑΧΟΡΗ I. ZALACHORI			
			Ελέγξει/checked			Ι. ΖΑΛΑΧΟΡΗ I. ZALACHORI			
			Έγκριση/approved			Π. ΤΣΙΚΝΑΚΟΥ P. TSIKNAKOU			
Kωδ. Έργου/ Project Code	5314	MD	PX	DRW		Έκδοση / Revision			

