

ΣΥΝΤΕΤΑΓΜΕΝΕΣ ΚΟΡΥΦΩΝ ΤΜΗΜΑ 1

ΣΥΣΤΗΜΑ ΣΥΝΤΕΤΑΓΜΕΝΩΝ ΕΓΓ'Α '87

α/α		X	Y
1	A	317.399,7	4.224.764,5
2	B	317.447,0	4.224.086,0
3	Γ	317.523,0	4.224.041,0
4	Δ	317.594,0	4.223.962,0
5	Ε	317.644,0	4.223.866,0
6	Ζ	317.659,0	4.223.820,0
7	Η	317.702,0	4.223.819,4
8	Θ	317.807,7	4.223.813,5
9		317.807,7	4.223.806,4
10		317.809,3	4.223.802,6
11		317.807,1	4.223.796,6
12		317.803,5	4.223.789,4
13		317.801,9	4.223.780,8
14		317.806,4	4.223.774,5
15		317.808,2	4.223.785,0
16	AM	317.784,0	4.223.814,0
17	AK	317.726,0	4.223.836,0
18	AO	317.670,0	4.223.958,0
19	AI	317.588,0	4.223.996,0
20	AP	317.502,0	4.223.996,0
21	AE	317.422,0	4.224.061,0
22	AT	317.330,8	4.224.154,2
23	AY	317.349,2	4.224.159,3
24	AF	317.350,6	4.224.159,7
25	AX	317.358,4	4.224.161,5

ΤΜΗΜΑ 1 = 24.709,97 τ.μ.

ΣΥΝΤΕΤΑΓΜΕΝΕΣ ΚΟΡΥΦΩΝ ΤΜΗΜΑ 2

ΣΥΣΤΗΜΑ ΣΥΝΤΕΤΑΓΜΕΝΩΝ ΕΓΓ'Α '87

α/α		X	Y
8	Θ	317.807,7	4.223.819,4
26	I	317.820,0	4.223.814,0
27	K	317.873,5	4.223.801,8
28		317.880,1	4.223.784,7
29		317.895,3	4.223.781,3
30		317.892,6	4.223.793,9
31	Λ	317.897,8	4.223.796,2
32	M	317.915,7	4.223.792,1
33		317.912,9	4.223.789,0
34		317.907,4	4.223.781,1
35		317.906,0	4.223.776,1
36		317.905,0	4.223.769,6
37		317.905,0	4.223.764,0
38	AI	317.907,4	4.223.755,2
39	AK	317.887,8	4.223.759,1
40		317.886,6	4.223.780,0
41		317.869,4	4.223.784,4
42	AL	317.865,0	4.223.763,5
15	AM	317.808,2	4.223.774,5
14		317.806,4	4.223.780,8
13		317.801,9	4.223.789,4
12		317.803,5	4.223.796,6
11		317.807,1	4.223.796,6
10		317.809,3	4.223.802,6
9		317.807,7	4.223.813,5

ΤΜΗΜΑ 2 = 3.441,85 τ.μ.

ΣΥΝΤΕΤΑΓΜΕΝΕΣ ΚΟΡΥΦΩΝ ΤΜΗΜΑ 3

ΣΥΣΤΗΜΑ ΣΥΝΤΕΤΑΓΜΕΝΩΝ ΕΓΓ'Α '87

α/α		X	Y
32	M	317.915,7	4.223.792,1
43	N	317.938,0	4.223.787,0
44	Ξ	317.979,8	4.223.780,8
45	O	318.066,0	4.223.768,0
46	Π	318.077,7	4.223.764,5
47		318.062,0	4.223.750,6
48		318.055,3	4.223.743,0
49	AZ	318.053,0	4.223.727,1
50	AH	317.992,2	4.223.738,9
51	AO	317.932,3	4.223.750,5
38	AI	317.907,4	4.223.755,2
37		317.905,0	4.223.764,0
36		317.905,0	4.223.769,6
35		317.906,0	4.223.776,1
34		317.907,4	4.223.781,1
33		317.912,9	4.223.789,0

ΤΜΗΜΑ 3 = 6.158,86 τ.μ.

ΣΥΝΤΕΤΑΓΜΕΝΕΣ ΚΟΡΥΦΩΝ ΤΜΗΜΑ 4

ΣΥΣΤΗΜΑ ΣΥΝΤΕΤΑΓΜΕΝΩΝ ΕΓΓ'Α '87

α/α		X	Y
46		318.077,7	4.223.764,5
52		318.120,0	4.223.752,0
53		318.198,0	4.223.706,0
54		318.235,0	4.223.688,0
55		318.247,0	4.223.673,2
56		318.245,4	4.223.668,6
57		318.239,1	4.223.662,7
58		318.231,0	4.223.651,6
59		318.226,7	4.223.637,1
60		318.222,0	4.223.640,0
61		318.201,0	4.223.664,0
62		318.069,0	4.223.724,0
49		318.053,0	4.223.727,1
48		318.055,3	4.223.743,0
47		318.062,0	4.223.750,6
46*		318.072,4	4.223.759,8

ΤΜΗΜΑ 4 = 8.210,60 τ.μ.

ΣΥΝΤΕΤΑΓΜΕΝΕΣ ΚΟΡΥΦΩΝ ΤΜΗΜΑ 5

ΣΥΣΤΗΜΑ ΣΥΝΤΕΤΑΓΜΕΝΩΝ ΕΓΓ'Α '87

α/α		X	Y
55		318.247,0	4.223.673,2
63		318.261,0	4.223.656,0
64		318.313,0	4.223.625,0
65		318.317,5	4.223.610,4
66		318.324,2	4.223.586,3
67		318.327,0	4.223.575,0
59		318.226,7	4.223.637,1
58		318.231,0	4.223.651,6
57		318.239,1	4.223.662,7
56		318.245,4	4.223.668,6

ΤΜΗΜΑ 5 = 3.600,23 τ.μ.

ΣΥΝΤΕΤΑΓΜΕΝΕΣ ΚΟΡΥΦΩΝ ΤΜΗΜΑ 6

ΣΥΣΤΗΜΑ ΣΥΝΤΕΤΑΓΜΕΝΩΝ ΕΓΓ'Α '87

α/α		X	Y
27	K	317.873,5	4.223.801,8
31	Λ	317.897,8	4.223.796,2
30		317.892,6	4.223.793,9
29		317.895,3	4.223.781,3
28		317.880,1	4.223.784,7

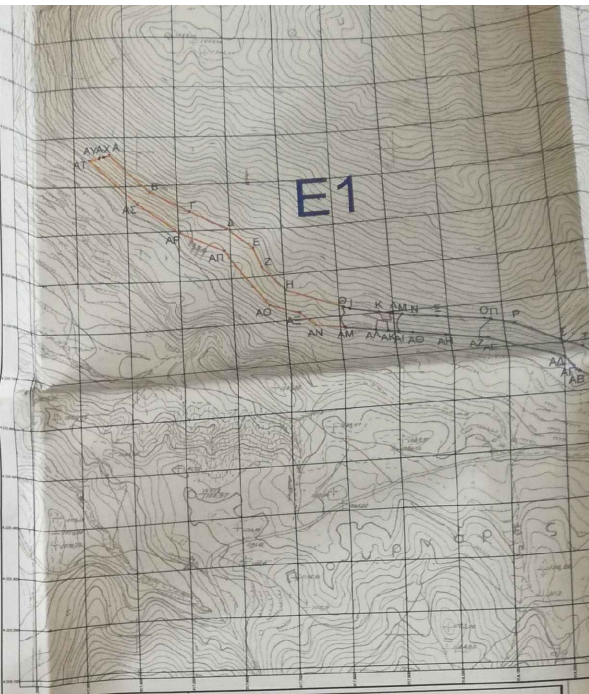
ΤΜΗΜΑ 6 = 270,31 τ.μ.

ΣΥΝΤΕΤΑΓΜΕΝΕΣ ΚΟΡΥΦΩΝ ΤΜΗΜΑ 7

ΣΥΣΤΗΜΑ ΣΥΝΤΕΤΑΓΜΕΝΩΝ ΕΓΓ'Α '87

α/α		X	Y
42		317.865,0	4.223.763,5
41		317.869,4	4.223.784,4
40		317.886,6	4.223.780,0
39		317.887,8	4.223.759,1

ΤΜΗΜΑ 7 = 424,64 τ.μ.



ΣΥΝΤΕΤΑΓΜΕΝΕΣ ΚΟΡΥΦΩΝ ΕΚΤΑΣΕΩΣ Ε1 ΑΙΤΗΣΗΣ ΧΑΡΑΚΤΗΡΙΣΜΟΥ

ΣΥΣΤΗΜΑ ΣΥΝΤΕΤΑΓΜΕΝΩΝ ΕΓΓ'Α '87

α/α	X	Y
A	317.369,7	4.224.164,3
B	317.447,0	4.224.086,0
Γ	317.523,0	4.224.041,0
Δ	317.594,0	4.224.002,0
E	317.644,0	4.223.962,0
Z	317.659,0	4.223.920,0
H	317.702,0	4.223.866,0
Θ	317.807,7	4.223.819,4
I	317.820,0	4.223.814,0
K	317.873,5	4.223.801,8
Λ	317.897,8	4.223.796,2
M	317.915,7	4.223.792,1
N	317.938,0	4.223.787,0
Ξ	317.979,8	4.223.780,8
O	318.066,0	4.223.768,0
Π	318.077,7	4.223.764,5
P	318.120,0	4.223.752,0
Σ	318.198,0	4.223.706,0
T	318.235,0	4.223.688,0
Y	318.247,0	4.223.673,2
Φ	318.261,0	4.223.656,0
X	318.313,0	4.223.625,0
Ψ	318.317,5	4.223.610,4
Ω	318.324,2	4.223.586,3
AA	318.327,0	4.223.575,0
AB	318.226,7	4.223.637,1
AG	318.222,0	4.223.640,0
AD	318.201,0	4.223.664,0
AE	318.069,0	4.223.724,0
AZ	318.053,0	4.223.727,1
AH	317.992,2	4.223.738,9
AO	317.932,3	4.223.750,5
AJ	317.907,4	4.223.755,2
AK	317.887,8	4.223.759,1
AL	317.865,0	4.223.763,5
AM	317.808,2	4.223.774,5
AN	317.754,0	4.223.785,0
AE	317.726,0	4.223.814,0
AO	317.670,0	4.223.836,0
AI	317.588,0	4.223.958,0
AP	317.502,0	4.223.996,0
AS	317.422,0	4.224.061,0
AT	317.330,8	4.224.154,2
AY	317.349,2	4.224.159,3
AF	317.350,6	4.224.159,7
AX	317.358,4	4.224.161,5

ΕΜΒΑΔΟΝ ΠΟΛΥΓΩΝΟΥ
E2= 46.816,46 τ.μ.