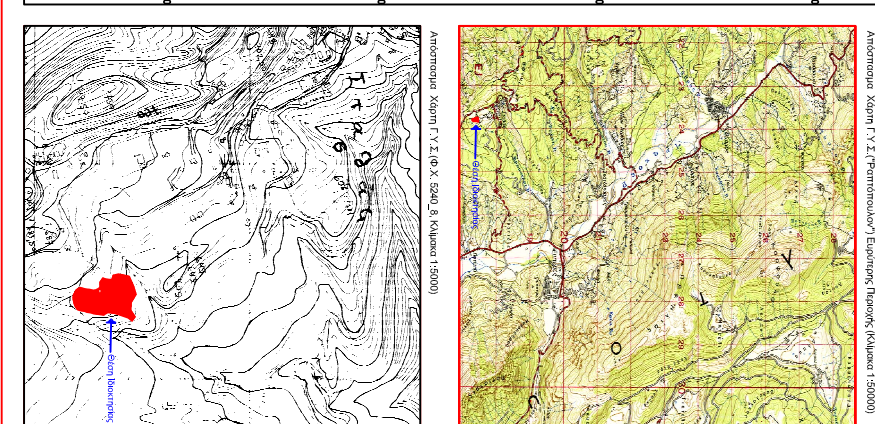
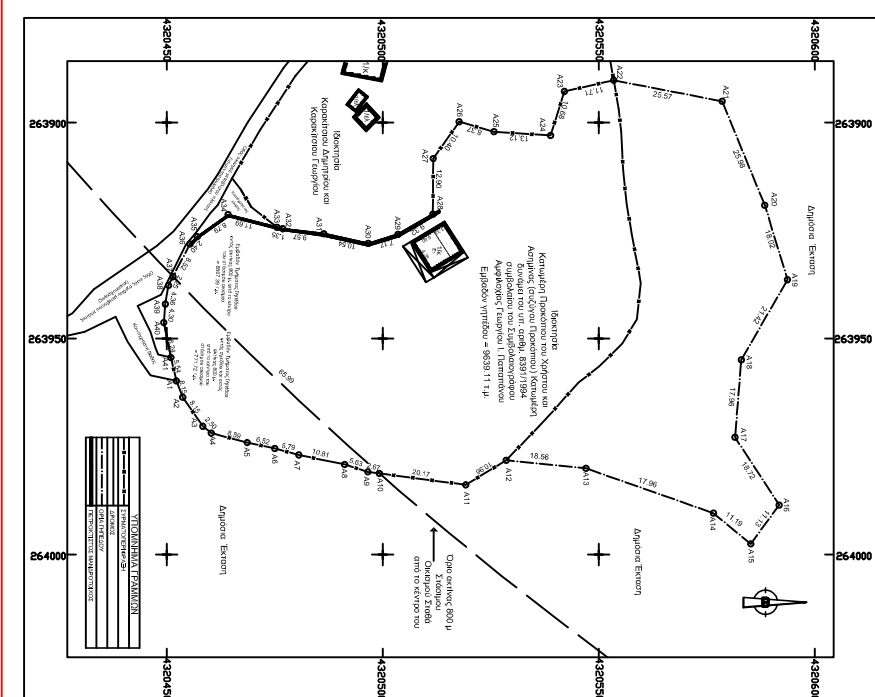


Κοιτούς	X	Y	Ανομοιότητα
A1	263656727	432044252	Α1Α12 = 8,13
A2	263656351	432045179	Α2Α12 = 15,13
A3	263671704	432048388	Α3Α12 = 8,50
A4	263671871	432048351	Α4Α12 = 8,50
A5	263672458	432047401	Α5Α12 = 8,80
A6	263672458	432047401	Α6Α12 = 8,80
A7	263672448	432048412	Α7Α12 = 8,79
A8	263672416	432048412	Α8Α12 = 8,79
A9	263672404	432048357	Α9Α12 = 8,79
A10	263672404	432048357	Α10Α12 = 8,79
A11	263656342	432045179	Α11Α12 = 8,88
A12	263656351	432045179	Α12Α12 = 15,13
A13	263691025	432047208	Α13Α12 = 8,87
A14	263691025	432047208	Α14Α12 = 8,87
A15	263691221	432051124	Α15Α12 = 10,40
A16	263691221	432051124	Α16Α12 = 10,40
A17	263691221	432051124	Α17Α12 = 10,40
A18	263691221	432051124	Α18Α12 = 10,40
A19	263691221	432051124	Α19Α12 = 10,40
A20	263691221	432051124	Α20Α12 = 10,40
A21	263691221	432051124	Α21Α12 = 10,40
A22	263691221	432051124	Α22Α12 = 10,40
A23	263691221	432051124	Α23Α12 = 10,40
A24	263691221	432051124	Α24Α12 = 10,40
A25	263691221	432051124	Α25Α12 = 10,40
A26	263691221	432051124	Α26Α12 = 10,40
A27	263691221	432051124	Α27Α12 = 10,40
A28	263691221	432051124	Α28Α12 = 10,40
A29	263691221	432051124	Α29Α12 = 10,40
A30	263691221	432051124	Α30Α12 = 10,40
A31	263691221	432051124	Α31Α12 = 10,40
A32	263691221	432051124	Α32Α12 = 10,40
A33	263691221	432051124	Α33Α12 = 10,40
A34	263691221	432051124	Α34Α12 = 10,40
A35	263691221	432051124	Α35Α12 = 10,40
A36	263691221	432051124	Α36Α12 = 10,40
A37	263691221	432051124	Α37Α12 = 10,40
A38	263691221	432051124	Α38Α12 = 10,40
A39	263691221	432051124	Α39Α12 = 10,40
A40	263691221	432051124	Α40Α12 = 10,40
A41	263691221	432051124	Α41Α12 = 10,40
A42	263691221	432051124	Α42Α12 = 10,40
A43	263691221	432051124	Α43Α12 = 10,40
A44	263691221	432051124	Α44Α12 = 10,40
A45	263691221	432051124	Α45Α12 = 10,40
A46	263691221	432051124	Α46Α12 = 10,40
A47	263691221	432051124	Α47Α12 = 10,40
A48	263691221	432051124	Α48Α12 = 10,40
A49	263691221	432051124	Α49Α12 = 10,40
A50	263691221	432051124	Α50Α12 = 10,40
A51	263691221	432051124	Α51Α12 = 10,40
A52	263691221	432051124	Α52Α12 = 10,40
A53	263691221	432051124	Α53Α12 = 10,40
A54	263691221	432051124	Α54Α12 = 10,40
A55	263691221	432051124	Α55Α12 = 10,40
A56	263691221	432051124	Α56Α12 = 10,40
A57	263691221	432051124	Α57Α12 = 10,40
A58	263691221	432051124	Α58Α12 = 10,40
A59	263691221	432051124	Α59Α12 = 10,40
A60	263691221	432051124	Α60Α12 = 10,40
A61	263691221	432051124	Α61Α12 = 10,40
A62	263691221	432051124	Α62Α12 = 10,40
A63	263691221	432051124	Α63Α12 = 10,40
A64	263691221	432051124	Α64Α12 = 10,40
A65	263691221	432051124	Α65Α12 = 10,40
A66	263691221	432051124	Α66Α12 = 10,40
A67	263691221	432051124	Α67Α12 = 10,40
A68	263691221	432051124	Α68Α12 = 10,40
A69	263691221	432051124	Α69Α12 = 10,40
A70	263691221	432051124	Α70Α12 = 10,40
A71	263691221	432051124	Α71Α12 = 10,40
A72	263691221	432051124	Α72Α12 = 10,40
A73	263691221	432051124	Α73Α12 = 10,40
A74	263691221	432051124	Α74Α12 = 10,40
A75	263691221	432051124	Α75Α12 = 10,40
A76	263691221	432051124	Α76Α12 = 10,40
A77	263691221	432051124	Α77Α12 = 10,40
A78	263691221	432051124	Α78Α12 = 10,40
A79	263691221	432051124	Α79Α12 = 10,40
A80	263691221	432051124	Α80Α12 = 10,40
A81	263691221	432051124	Α81Α12 = 10,40
A82	263691221	432051124	Α82Α12 = 10,40
A83	263691221	432051124	Α83Α12 = 10,40
A84	263691221	432051124	Α84Α12 = 10,40
A85	263691221	432051124	Α85Α12 = 10,40
A86	263691221	432051124	Α86Α12 = 10,40
A87	263691221	432051124	Α87Α12 = 10,40
A88	263691221	432051124	Α88Α12 = 10,40
A89	263691221	432051124	Α89Α12 = 10,40
A90	263691221	432051124	Α90Α12 = 10,40
A91	263691221	432051124	Α91Α12 = 10,40
A92	263691221	432051124	Α92Α12 = 10,40
A93	263691221	432051124	Α93Α12 = 10,40
A94	263691221	432051124	Α94Α12 = 10,40
A95	263691221	432051124	Α95Α12 = 10,40
A96	263691221	432051124	Α96Α12 = 10,40
A97	263691221	432051124	Α97Α12 = 10,40
A98	263691221	432051124	Α98Α12 = 10,40
A99	263691221	432051124	Α99Α12 = 10,40
A100	263691221	432051124	Α100Α12 = 10,40

Κοιτούς	X	Y	Ανομοιότητα
A1	263656727	432044252	Α1Α12 = 8,13
A2	263656351	432045179	Α2Α12 = 15,13
A3	263671704	432048388	Α3Α12 = 8,50
A4	263671871	432048351	Α4Α12 = 8,50
A5	263672458	432047401	Α5Α12 = 8,80
A6	263672458	432047401	Α6Α12 = 8,80
A7	263672448	432048412	Α7Α12 = 8,79
A8	263672416	432048412	Α8Α12 = 8,79
A9	263672404	432048357	Α9Α12 = 8,79
A10	263672404	432048357	Α10Α12 = 8,79
A11	263656342	432045179	Α11Α12 = 8,88
A12	263656351	432045179	Α12Α12 = 15,13
A13	263691025	432047208	Α13Α12 = 8,87
A14	263691025	432047208	Α14Α12 = 8,87
A15	263691221	432051124	Α15Α12 = 10,40
A16	263691221	432051124	Α16Α12 = 10,40
A17	263691221	432051124	Α17Α12 = 10,40
A18	263691221	432051124	Α18Α12 = 10,40
A19	263691221	432051124	Α19Α12 = 10,40
A20	263691221	432051124	Α20Α12 = 10,40
A21	263691221	432051124	Α21Α12 = 10,40
A22	263691221	432051124	Α22Α12 = 10,40
A23	263691221	432051124	Α23Α12 = 10,40
A24	263691221	432051124	Α24Α12 = 10,40
A25	263691221	432051124	Α25Α12 = 10,40
A26	263691221	432051124	Α26Α12 = 10,40
A27	263691221	432051124	Α27Α12 = 10,40
A28	263691221	432051124	Α28Α12 = 10,40
A29	263691221	432051124	Α29Α12 = 10,40
A30	263691221	432051124	Α30Α12 = 10,40
A31	263691221	432051124	Α31Α12 = 10,40
A32	263691221	432051124	Α32Α12 = 10,40
A33	263691221	432051124	Α33Α12 = 10,40
A34	263691221	432051124	Α34Α12 = 10,40
A35	263691221	432051124	Α35Α12 = 10,40
A36	263691221	432051124	Α36Α12 = 10,40
A37	263691221	432051124	Α37Α12 = 10,40
A38	263691221	432051124	Α38Α12 = 10,40
A39	263691221	432051124	Α39Α12 = 10,40
A40	263691221	432051124	Α40Α12 = 10,40
A41	263691221	432051124	Α41Α12 = 10,40
A42	263691221	432051124	Α42Α12 = 10,40
A43	263691221	432051124	Α43Α12 = 10,40
A44	263691221	432051124	Α44Α12 = 10,40
A45	263691221	432051124	Α45Α12 = 10,40
A46	263691221	432051124	Α46Α12 = 10,40
A47	263691221	432051124	Α47Α12 = 10,40
A48	263691221	432051124	Α48Α12 = 10,40
A49	263691221	432051124	Α49Α12 = 10,40
A50	263691221	432051124	Α50Α12 = 10,40
A51	263691221	432051124	Α51Α12 = 10,40
A52	263691221	432051124	Α52Α12 = 10,40
A53	263691221	432051124	Α53Α12 = 10,40
A54	263691221	432051124	Α54Α12 = 10,40
A55	263691221	432051124	Α55Α12 = 10,40
A56	263691221	432051124	Α56Α12 = 10,40
A57	263691221	432051124	Α57Α12 = 10,40
A58	263691221	432051124	Α58Α12 = 10,40
A59	263691221	432051124	Α59Α12 = 10,40
A60	263691221	432051124	Α60Α12 = 10,40
A61	263691221	432051124	Α61Α12 = 10,40
A62	263691221	432051124	Α62Α12 = 10,40
A63	263691221	432051124	Α63Α12 = 10,40
A64	263691221	432051124	Α64Α12 = 10,40
A65	263691221	432051124	Α65Α12 = 10,40
A66	263691221	432051124	Α66Α12 = 10,40
A67	263691221	432051124	Α67Α12 = 10,40
A68	263691221	432051124	Α68Α12 = 10,40
A69	263691221	432051124	Α69Α12 = 10,40
A70	263691221	432051124	Α70Α12 = 10,40
A71	263691221	432051124	Α71Α12 = 10,40
A72	263691221	432051124	Α72Α12 = 10,40
A73	263691221	432051124	Α73Α12 = 10,40
A74	263691221	432051124	Α74Α12 = 10,40
A75	263691221	432051124	Α75Α12 = 10,40
A76	263691221	432051124	Α76Α12 = 10,40
A77	263691221	432051124	Α77Α12 = 10,40
A78	263691221	432051124	Α78Α12 = 10,40
A79	263691221	432051124	Α79Α12 = 10,40
A80	263691221	432051124	Α80Α12 = 10,40
A81	263691221	432051124	Α81Α12 = 10,40
A82	263691221	432051124	Α82Α12 = 10,40
A83	263691221	432051124	Α83Α12 = 10,40
A84	263691221	432051124	Α84Α12 = 10,40
A85	263691221	432051124	Α85Α12 = 10,40
A86	263691221	432051124	Α86Α12 = 10,40
A87	263691221	432051124	Α87Α12 = 10,40
A88	263691221	432051124	Α88Α12 = 10,40
A89	263691221	432051124	Α89Α12 = 10,40
A90	263691221	432051124	Α90Α12 = 10,40
A91	263691221	432051124	Α91Α12 = 10,40
A92	263691221	432051124	Α92Α12 = 10,40
A93	263691221	432051124	Α93Α12 = 10,40
A94	263691221	432051124	Α94Α12 = 10,40
A95	263691221	432051124	Α95Α12 = 10,40
A96	263691221	432051124	Α96Α12 = 10,40
A97	263691221	432051124	Α97Α12 = 10,40
A98	263691221	432051124	Α98Α12 = 10,40
A99	263691221	432051124	Α99Α12 = 10,40
A100	263691221	432051124	Α100Α12 = 10,40



Ανομοιότητα Χάρτη Γ.Χ.Σ. (Ρετρομοίωση) Ελαφίτης Πλάκειας (Κλίμακα 1:50000)

Ανομοιότητα Οδοβωρολόγιου Κτηματολογίου Α.Ε.

ΤΕΧΝΙΚΟ ΓΡΑΦΕΙΟ ΜΕΛΕΤΩΝ
ΚΩΝΣΤΑΝΤΙΝΟΣ ΓΑΓΚΑΝΑΛΙΟΥ
δ/νση Αγροτικής Τοπογραφίας, Αγ.Θ. Μ.Σ.

Επίσημος: Κτηματολόγιο Γραφείο του Χορηγού

Εργο: Ανομοιότητα Γραφείο

ΜΑΚΑ ΜΑΥΡΩΤΑ
Η/μ. 05/05/2015
952101155

Αριθμός Σχεδίου: 753/2012
Κλίμακα: 1:500
Χρόνος Μελέτης: Μάρτιος 2012

Σημειώσεις:
Εντός Σχεδίου Χωρίζονται 2 κομμάτια γης, από τα οποία το κομμάτι που ορίζεται με τη συνθήκη είναι χωρικό και έχει πλάτος 18,80 μ. και μήκος 14,62 μ. Η συνολική επιφ