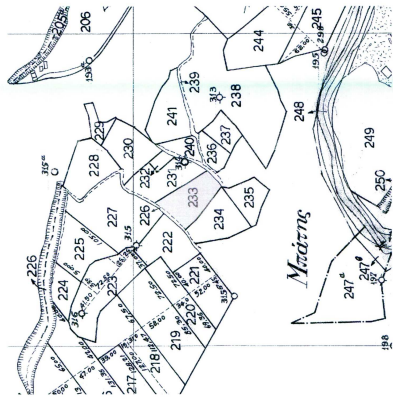
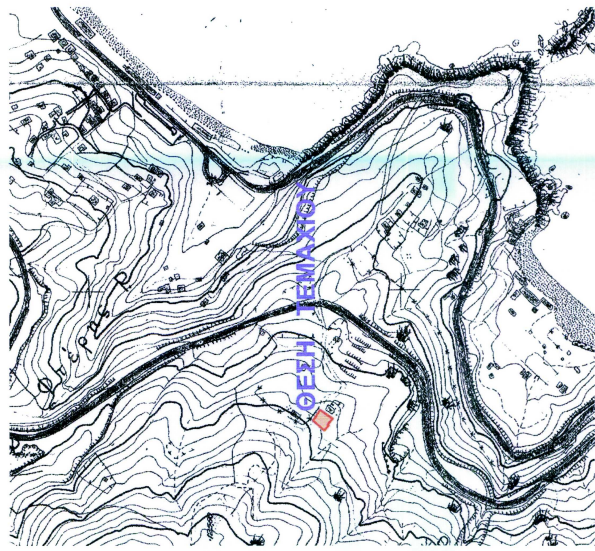


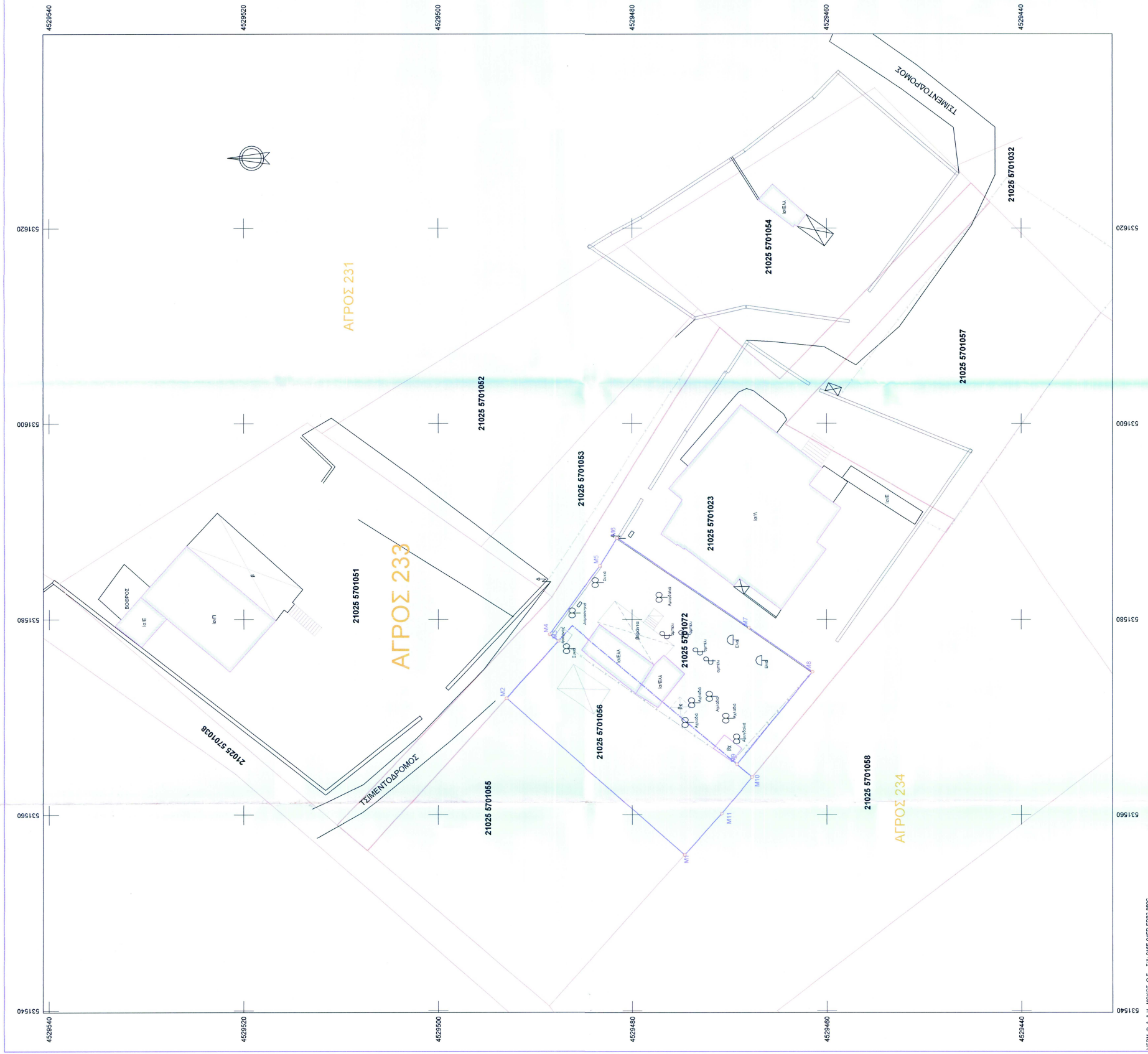
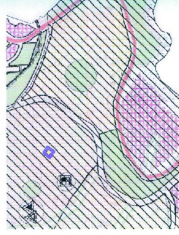
ΑΠΟΣΠΑΣΜΑ ΑΠΟ ΤΗ ΔΙΑΔΟΧΗ "ΟΦΜΑΝ ΚΑΙ ΥΦΙΜΑΤΑ" ΚΑΒΑΛΑΣ
ΕΤΟΥΣ 1959 - 1960 ΚΛΙΜΑΚΑ 1:5000



ΑΠΟΣΠΑΣΜΑ ΑΠΟ ΤΗΝ ΠΙΝΑΚΙΔΑ ΓΥΣ 1:5000 ΦΥΛΛΟ 3551-8



ΑΠΟΣΠΑΣΜΑ ΑΠΟ ΤΟ ΓΠΣ 1:10000 ΔΗΜΟΥ ΚΑΒΑΛΑΣ



ΣΥΝΤΕΤΡΙΜΕΝΕΣ ΟΔΟΙ

Σημείο	X (m)	Y (m)	Σημείο	X (m)	Y (m)
M1	53155.911	452947.636	M2	53157.940	452946.978
M2	53157.940	452946.978	M3	53157.794	452948.616
M3	53157.794	452948.616	M4	53157.794	452949.254
M4	53157.794	452949.254	M5	53157.638	452949.254
M5	53157.638	452949.254	M6	53156.991	452949.254
M6	53156.991	452949.254	M7	53157.145	452947.074
M7	53157.145	452947.074	M8	53157.638	452947.074
M8	53157.638	452947.074	M9	53158.285	452947.074
M9	53158.285	452947.074	M10	53159.010	452947.074
M10	53159.010	452947.074	M11	53159.010	452947.852
M11	53159.010	452947.852	M12	53159.010	452948.630
M12	53159.010	452948.630	M13	53159.010	452949.408
M13	53159.010	452949.408	M14	53158.285	452949.408
M14	53158.285	452949.408	M15	53157.559	452949.408
M15	53157.559	452949.408	M16	53156.833	452949.408
M16	53156.833	452949.408	M17	53156.077	452949.408
M17	53156.077	452949.408	M18	53155.321	452949.408
M18	53155.321	452949.408	M19	53154.565	452949.408
M19	53154.565	452949.408	M20	53153.809	452949.408
M20	53153.809	452949.408	M21	53153.053	452949.408
M21	53153.053	452949.408	M22	53152.297	452949.408
M22	53152.297	452949.408	M23	53151.541	452949.408
M23	53151.541	452949.408	M24	53150.785	452949.408
M24	53150.785	452949.408	M25	53150.029	452949.408
M25	53150.029	452949.408	M26	53149.273	452949.408
M26	53149.273	452949.408	M27	53148.517	452949.408
M27	53148.517	452949.408	M28	53147.761	452949.408
M28	53147.761	452949.408	M29	53147.005	452949.408
M29	53147.005	452949.408	M30	53146.249	452949.408
M30	53146.249	452949.408	M31	53145.493	452949.408
M31	53145.493	452949.408	M32	53144.737	452949.408
M32	53144.737	452949.408	M33	53143.981	452949.408
M33	53143.981	452949.408	M34	53143.225	452949.408
M34	53143.225	452949.408	M35	53142.469	452949.408
M35	53142.469	452949.408	M36	53141.713	452949.408
M36	53141.713	452949.408	M37	53140.957	452949.408
M37	53140.957	452949.408	M38	53140.201	452949.408
M38	53140.201	452949.408	M39	53139.445	452949.408
M39	53139.445	452949.408	M40	53138.689	452949.408
M40	53138.689	452949.408	M41	53137.933	452949.408
M41	53137.933	452949.408	M42	53137.177	452949.408
M42	53137.177	452949.408	M43	53136.421	452949.408
M43	53136.421	452949.408	M44	53135.665	452949.408
M44	53135.665	452949.408	M45	53134.909	452949.408
M45	53134.909	452949.408	M46	53134.153	452949.408
M46	53134.153	452949.408	M47	53133.397	452949.408
M47	53133.397	452949.408	M48	53132.641	452949.408
M48	53132.641	452949.408	M49	53131.885	452949.408
M49	53131.885	452949.408	M50	53131.129	452949.408
M50	53131.129	452949.408	M51	53130.373	452949.408
M51	53130.373	452949.408	M52	53129.617	452949.408
M52	53129.617	452949.408	M53	53128.861	452949.408
M53	53128.861	452949.408	M54	53128.105	452949.408
M54	53128.105	452949.408	M55	53127.349	452949.408
M55	53127.349	452949.408	M56	53126.593	452949.408
M56	53126.593	452949.408	M57	53125.837	452949.408
M57	53125.837	452949.408	M58	53125.081	452949.408
M58	53125.081	452949.408	M59	53124.325	452949.408
M59	53124.325	452949.408	M60	53123.569	452949.408
M60	53123.569	452949.408	M61	53122.813	452949.408
M61	53122.813	452949.408	M62	53122.057	452949.408
M62	53122.057	452949.408	M63	53121.301	452949.408
M63	53121.301	452949.408	M64	53120.545	452949.408
M64	53120.545	452949.408	M65	53119.789	452949.408
M65	53119.789	452949.408	M66	53119.033	452949.408
M66	53119.033	452949.408	M67	53118.277	452949.408
M67	53118.277	452949.408	M68	53117.521	452949.408
M68	53117.521	452949.408	M69	53116.765	452949.408
M69	53116.765	452949.408	M70	53116.009	452949.408
M70	53116.009	452949.408	M71	53115.253	452949.408
M71	53115.253	452949.408	M72	53114.497	452949.408
M72	53114.497	452949.408	M73	53113.741	452949.408
M73	53113.741	452949.408	M74	53112.985	452949.408
M74	53112.985	452949.408	M75	53112.229	452949.408
M75	53112.229	452949.408	M76	53111.473	452949.408
M76	53111.473	452949.408	M77	53110.717	452949.408
M77	53110.717	452949.408	M78	53109.961	452949.408
M78	53109.961	452949.408	M79	53109.205	452949.408
M79	53109.205	452949.408	M80	53108.449	452949.408
M80	53108.449	452949.408	M81	53107.693	452949.408
M81	53107.693	452949.408	M82	53106.937	452949.408
M82	53106.937	452949.408	M83	53106.181	452949.408
M83	53106.181	452949.408	M84	53105.425	452949.408
M84	53105.425	452949.408	M85	53104.669	452949.408
M85	53104.669	452949.408	M86	53103.913	452949.408
M86	53103.913	452949.408	M87	53103.157	452949.408
M87	53103.157	452949.408	M88	53102.401	452949.408
M88	53102.401	452949.408	M89	53101.645	452949.408
M89	53101.645	452949.408	M90	53100.889	452949.408
M90	53100.889	452949.408	M91	53100.133	452949.408
M91	53100.133	452949.408	M92	53099.377	452949.408
M92	53099.377	452949.408	M93	53098.621	452949.408
M93	53098.621	452949.408	M94	53097.865	452949.408
M94	53097.865	452949.408	M95	53097.109	452949.408
M95	53097.109	452949.408	M96	53096.353	452949.408
M96	53096.353	452949.408	M97	53095.597	452949.408
M97	53095.597	452949.408	M98	53094.841	452949.408
M98	53094.841	452949.408	M99	53094.085	452949.408
M99	53094.085	452949.408	M100	53093.329	452949.408
M100	53093.329	452949.408	M101	53092.573	452949.408
M101	53092.573	452949.408	M102	53091.817	452949.408
M102	53091.817	452949.408	M103	53091.061	452949.408
M103	53091.061	452949.408	M104	53090.305	452949.408
M104	53090.305	452949.408	M105	53089.549	452949.408
M105	53089.549	452949.408	M106	53088.793	452949.408
M106	53088.793	452949.408	M107	53088.037	452949.408
M107	53088.037	452949.408	M108	53087.281	452949.408
M108	53087.281	452949.408	M109	53086.525	452949.408
M109	53086.525	452949.408	M110	53085.769	452949.408
M110	53085.769	452949.408	M111	53085.013	452949.408
M111	53085.013	452949.408	M112	53084.257	452949.408
M112	53084.257	452949.408	M113	53083.501	452949.408
M113	53083.501	452949.408	M114	53082.745	452949.408
M114	53082.745	452949.408	M115	53081.989	452949.408
M115	53081.989	452949.408	M116	53081.233	452949.408
M116	53081.233	452949.408	M117	53080.477	452949.408
M117	53080.477	452949.408	M118	53079.721	452949.408
M118	53079.721	452949.408	M119	53078.965	452949.408
M119	53078.965	452949.408	M120	53078.209	452949.408
M120	53078.209	452949.408	M121	53077.453	452949.408
M121	53077.453	452949.408	M122	53076.697	452949.408
M122	53076.697	452949.408	M123	53075.941	452949.408
M123	53075.941	452949.408	M124	53075.185	452949.408
M124	53075.185	452949.408	M125	53074.429	452949.408
M125	53074.429	452949.408	M126	53073.673	452949.408
M126	53073.673	452949.408	M127	53072.917	452949.408
M127	53072.917	452949.408	M128	53072.161	452949.408
M128	53072.161	452949.408	M129	53071.405	452949.408
M129	53071.405	452949.408	M130	53070.649	452949.408
M130	53070.649	452949.408	M131	53069.893	452949.408
M131	53069.893	452949.408	M132	53069.137	452949.408
M132	53069.137	452949.408	M133	53068.381	452949.408
M133	53068.381	452949.408	M134	53067.625	45