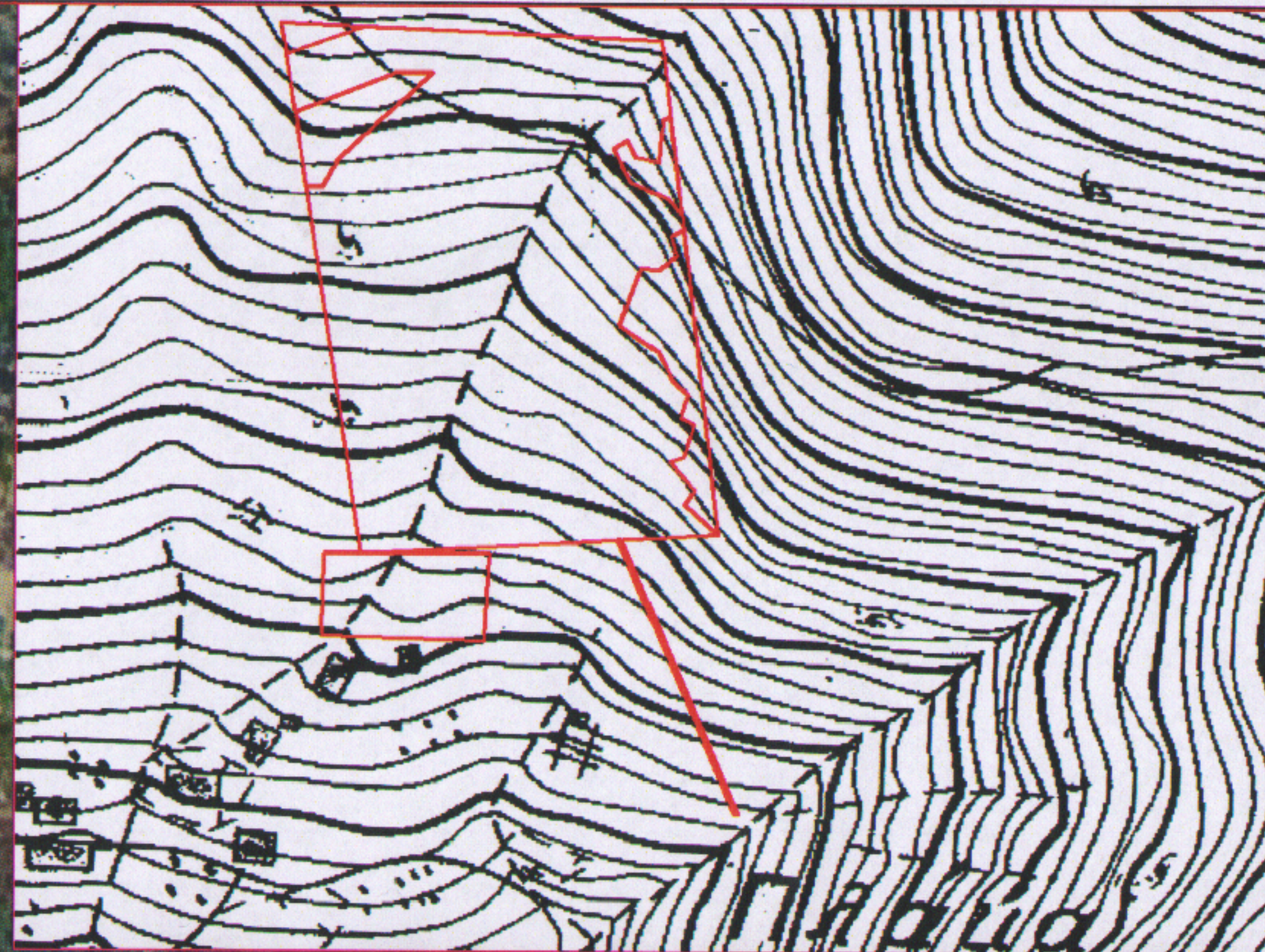
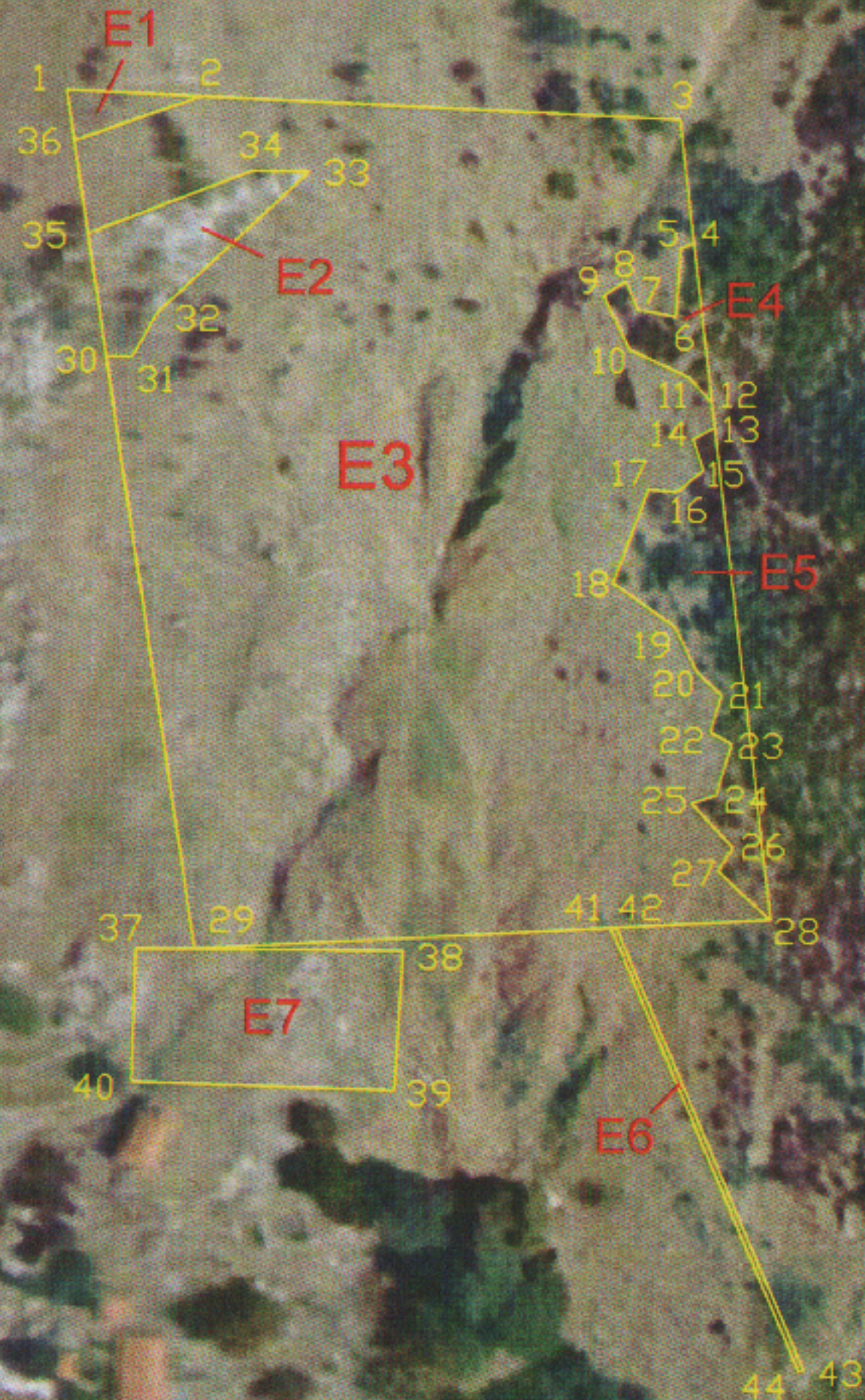




ΚΑΙΜΑΚΑ
1:2,000



Γ.Υ.Σ. 6256_8

	X	Y		X	Y		X	Y		X	Y
1	312325.2318	4198785.0012	12	312433.5371	4198733.1926	23	312437.1309	4198675.8309	34	312356.3332	4198771.5080
2	312347.8851	4198784.0067	13	312434.0418	4198728.9036	24	312434.4834	4198667.0934	35	312328.9375	4198760.9107
3	312427.9710	4198780.4907	14	312430.4506	4198727.0135	25	312430.4722	4198665.7610	36	312326.5440	4198776.4710
4	312430.3984	4198759.8635	15	312432.1632	4198721.7696	26	312437.4502	4198658.3042	37	312337.6040	4198640.8540
5	312428.2446	4198758.9570	16	312427.7754	4198718.1304	27	312434.9478	4198654.4671	38	312382.1870	4198640.7220
6	312427.4061	4198747.3801	17	312422.9724	4198718.4916	28	312443.7721	4198646.2201	39	312380.8640	4198617.1740
7	312421.1423	4198748.6590	18	312417.1373	4198702.8110	29	312347.3970	4198840.9077	40	312336.9430	4198618.4970
8	312419.0119	4198753.4528	19	312427.5682	4198695.5294	30	312332.0976	4198740.3673	41	312417.0000	4198644.7200
9	312415.2829	4198750.9677	20	312431.3228	4198687.8433	31	312336.5446	4198740.3673	42	312418.0000	4198644.7200
10	312419.7220	4198741.9125	21	312435.3603	4198684.1045	32	312340.7619	4198747.8282	43	312449.7630	4198570.3760
11	312429.8276	4198737.2466	22	312433.5660	4198677.8238	33	312366.0660	4198771.5080	44	312448.7630	4198570.3760

E1(1-2-36-1) = 95,97 τ.μ., E2(36-34-...-30-35) = 474,46 τ.μ., E3(2-3-4-...-35-36-2) = 12.403,75 τ.μ., E4(4-12-11-...-6-5-4) = 186,05 τ.μ.,
E5(13-28-27-...-14-13) = 703,95 τ.μ., E6(41-42-43-44-41) = 74,34 τ.μ. και E7(37-38-39-40-37) = 1.016,42 τ.μ.

ΘΕΩΡΗΘΗΚΕ

Σύμφωνα με το αρθ. 83284/436

Διεύθυνση της υπηρεσίας μας

Θεσσαλονίκη 17-8-2016

Ο Δασάρχης α.α.



Γεώργιος Τσαγιαννίδης
Δασολόγος

Ο/Η ενεργήσας την
αυτοψία
Γεώργιος Τσαγιαννίδης
Δασολόγος