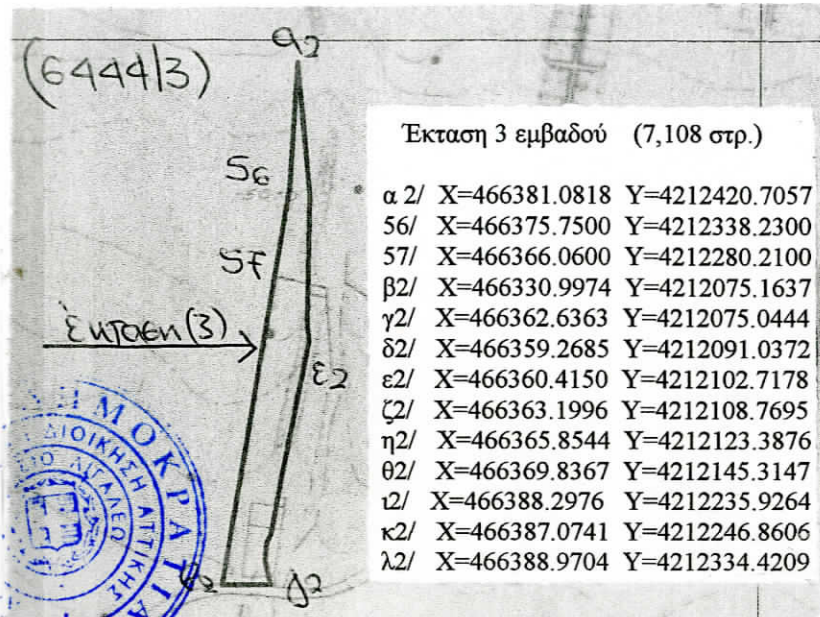
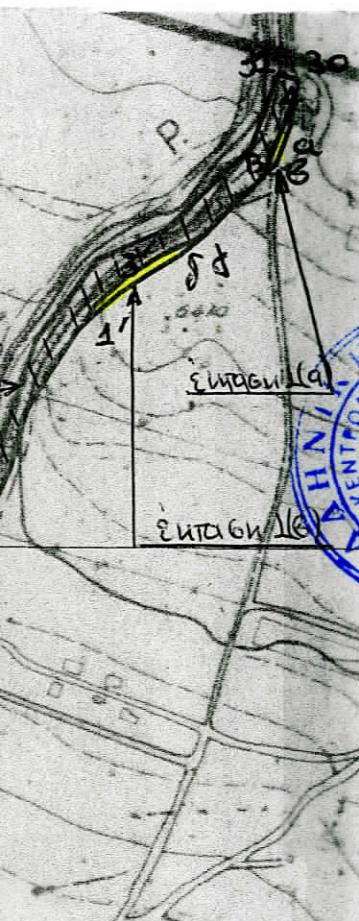


ΤΟΠΟΓΡΑΦΙΚΟ ΔΙΑΓΡΑΜΜΑ

επί αποσπασμάτων χαρτών Γ.Υ.Σ. κλίμακας 1:5.000 (6443/4) & (6444/3) των προς χαρακτηρισμό εκτάσεων και συγκεκριμένα: έκταση 1(α), έκταση 1(β), έκταση 1(γ), έκταση (3), έκταση 4(α), έκταση (5), έκταση 6(α) και έκταση (7) όπως αυτές αναλυτικά απεικονίζονται στο εν λόγω τοπογραφικό.

0,207 στρ.) &

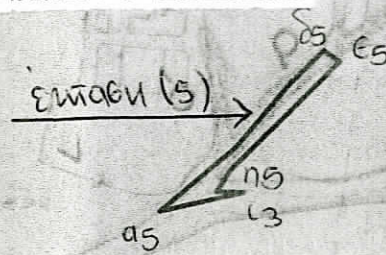


Εκταση 3 εμβαδού (7,108 στρ.)

| | | |
|-----|---------------|----------------|
| α2/ | X=466381.0818 | Y=4212420.7057 |
| β2/ | X=466330.9974 | Y=4212075.1637 |
| γ2/ | X=466362.6363 | Y=4212075.0444 |
| δ2/ | X=466359.2685 | Y=4212091.0372 |
| ε2/ | X=466360.4150 | Y=4212102.7178 |
| ζ2/ | X=466363.1996 | Y=4212108.7695 |
| η2/ | X=466365.8544 | Y=4212123.3876 |
| θ2/ | X=466369.8367 | Y=4212145.3147 |
| ι2/ | X=466388.2976 | Y=4212235.9264 |
| κ2/ | X=466387.0741 | Y=4212246.8606 |
| λ2/ | X=466388.9704 | Y=4212334.4209 |

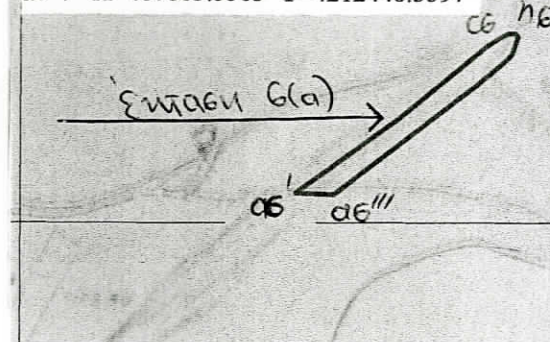
Εκταση (5) εμβαδού (1,693 στρ.)

| | | |
|-----|---------------|----------------|
| α5/ | X=467436.5458 | Y=4212203.6273 |
| β5/ | X=467487.2007 | Y=4212245.0813 |
| γ5/ | X=467524.1276 | Y=4212287.0754 |
| δ5/ | X=467547.0264 | Y=4212308.6187 |
| ε5/ | X=467557.4890 | Y=4212301.3693 |
| ζ5/ | X=467505.4721 | Y=4212251.2702 |
| η5/ | X=467483.4672 | Y=4212230.0664 |
| θ5/ | X=467474.2349 | Y=4212215.8262 |
| ι5/ | X=467492.3254 | Y=4212215.1602 |



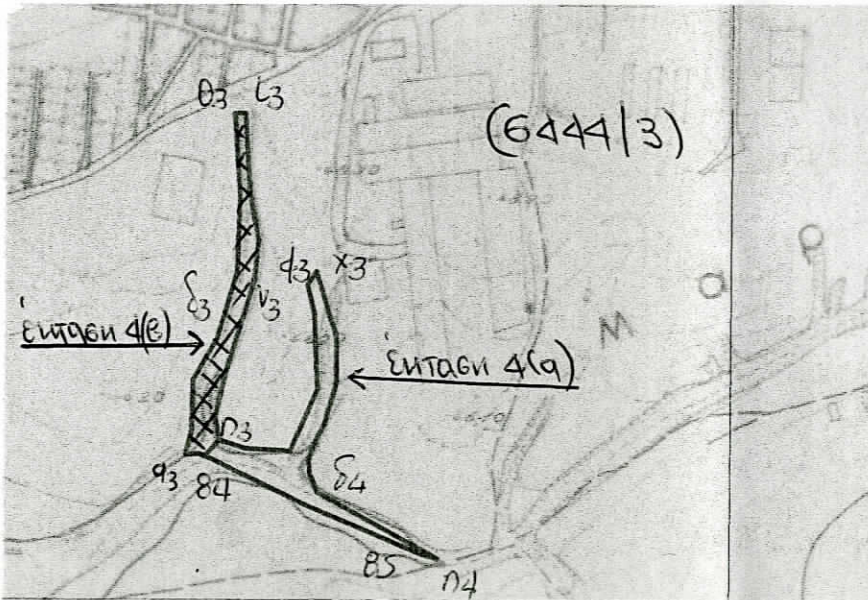
Εκταση 6(α) εμβαδόν (2,446 στρ.)

| | | |
|--------|---------------|----------------|
| α6'/ | X=467873.5583 | Y=4212448.3597 |
| β6'/ | X=467941.8580 | Y=4212497.0112 |
| γ6'/ | X=467980.0782 | Y=4212528.0375 |
| δ6'/ | X=468000.0000 | Y=4212544.2096 |
| ε6'/ | X=468002.1400 | Y=4212545.9468 |
| ζ6'/ | X=468008.9308 | Y=4212550.0201 |
| η6'/ | X=468014.3634 | Y=4212552.1926 |
| θ6'/ | X=468018.7095 | Y=4212552.1926 |
| ι6'/ | X=468020.3393 | Y=4212549.7486 |
| κ6'/ | X=468015.9932 | Y=4212538.3432 |
| λ6'/ | X=468010.4392 | Y=4212532.6117 |
| μ6'/ | X=468000.0000 | Y=4212523.8760 |
| ν6'/ | X=467991.1919 | Y=4212517.1559 |
| α6'''/ | X=467901.3136 | Y=4212448.5848 |
| α6''/ | X=467883.5583 | Y=4212448.3597 |



Εκταση 4 εμβαδόν (6,395 στρ.) αποτελούμενη από τις: έκταση 4(α) εμβαδού (3,540 στρ.) & έκταση 4(β) εμβαδού (2,855 στρ.)

| | | |
|-----|---------------|----------------|
| α3/ | X=466825.7563 | Y=4212030.1755 |
| β3/ | X=466829.6616 | Y=4212046.8240 |
| γ3/ | X=466830.5614 | Y=4212079.6560 |
| δ3/ | X=466846.2528 | Y=4212106.8062 |
| ε3/ | X=466859.8158 | Y=4212151.3470 |
| ζ3/ | X=466861.4331 | Y=4212201.7358 |
| η3/ | X=466858.9229 | Y=4212248.6443 |
| θ3/ | X=466858.0735 | Y=4212256.9094 |
| ι3/ | X=466865.2355 | Y=4212256.5672 |
| κ3/ | X=466866.7194 | Y=4212224.0258 |
| λ3/ | X=466868.3135 | Y=4212203.3133 |
| μ3/ | X=466874.0523 | Y=4212172.4043 |
| ν3/ | X=466871.1828 | Y=4212145.3189 |
| ξ3/ | X=466852.0493 | Y=4212083.4253 |
| ο3/ | X=466845.4063 | Y=4212054.8264 |
| π3/ | X=466848.4585 | Y=4212039.7749 |
| ρ3/ | X=466865.0600 | Y=4212033.9724 |
| σ3/ | X=466895.0254 | Y=4212032.4736 |
| τ3/ | X=466913.1172 | Y=4212073.3933 |
| υ3/ | X=466911.1330 | Y=4212123.7078 |
| φ3/ | X=466906.2927 | Y=4212142.7152 |
| χ3/ | X=466912.4341 | Y=4212151.4496 |
| ψ3/ | X=466925.9075 | Y=4212107.3743 |
| ω3/ | X=466925.9075 | Y=4212077.6340 |
| α4/ | X=466918.1143 | Y=4212050.7262 |
| β4/ | X=466911.8332 | Y=4212038.6941 |
| γ4/ | X=466907.3178 | Y=4212027.5043 |
| δ4/ | X=466907.8316 | Y=4212017.5877 |
| ε4/ | X=466910.1799 | Y=4212011.9505 |
| ζ4/ | X=466912.7258 | Y=4212004.8473 |
| η4/ | X=466992.5794 | Y=4211960.2684 |
| θ4/ | X=466982.9100 | Y=4211963.0000 |
| ι4/ | X=466992.5794 | Y=4211960.2684 |
| κ4/ | X=466834.8100 | Y=4212030.5000 |
| λ4/ | X=466834.8100 | Y=4212030.5000 |
| μ4/ | X=466874.0523 | Y=4212172.4043 |
| ν4/ | X=466871.1828 | Y=4212145.3189 |
| ξ4/ | X=466852.0493 | Y=4212083.4253 |
| ο4/ | X=466845.4063 | Y=4212054.8264 |



Συντεταγμένες έκτασης 4(α)

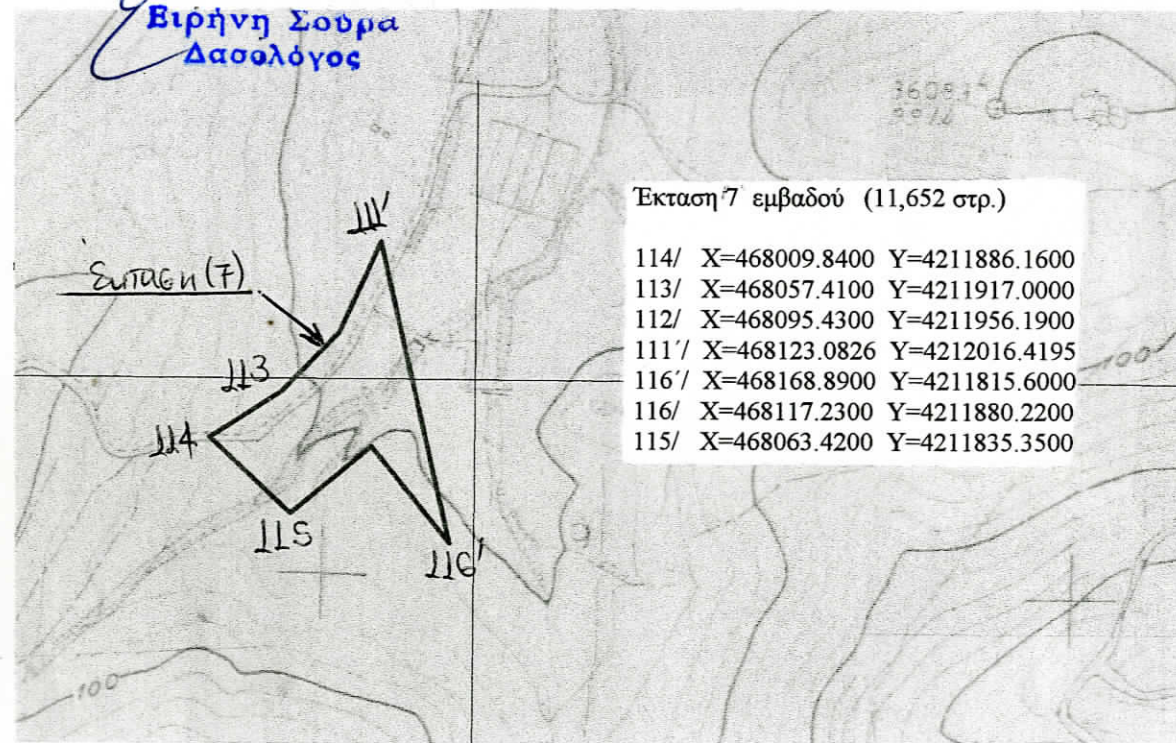
| | | |
|-----|---------------|----------------|
| π3/ | X=466848.4585 | Y=4212039.7749 |
| 84/ | X=466838.7800 | Y=4212029.1100 |
| 85/ | X=466907.5000 | Y=4211995.5000 |
| θ4/ | X=466982.9100 | Y=4211963.0000 |
| η4/ | X=466992.5794 | Y=4211960.2684 |
| ζ4/ | X=466912.7258 | Y=4212004.8473 |
| ε4/ | X=466910.1799 | Y=4212011.9505 |
| δ4/ | X=466907.8316 | Y=4212017.5877 |
| γ4/ | X=466907.3178 | Y=4212027.5043 |
| β4/ | X=466911.8332 | Y=4212038.6941 |
| α4/ | X=466918.1143 | Y=4212050.7262 |
| ω3/ | X=466925.9075 | Y=4212077.6340 |
| ι3/ | X=466865.2355 | Y=4212256.5672 |
| κ3/ | X=466866.7194 | Y=4212224.0258 |
| λ3/ | X=466868.3135 | Y=4212203.3133 |
| μ3/ | X=466874.0523 | Y=4212172.4043 |
| ν3/ | X=466871.1828 | Y=4212145.3189 |
| ξ3/ | X=466852.0493 | Y=4212083.4253 |
| ο3/ | X=466845.4063 | Y=4212054.8264 |

Συντεταγμένες έκτασης 4(β)

| | | |
|-----|---------------|----------------|
| π3/ | X=466848.4585 | Y=4212039.7749 |
| 84/ | X=466838.7800 | Y=4212029.1100 |
| 83/ | X=466834.8100 | Y=4212030.5000 |
| α3/ | X=466825.7563 | Y=4212030.1755 |
| β3/ | X=466829.6616 | Y=4212046.8240 |
| γ3/ | X=466830.5614 | Y=4212079.6560 |
| δ3/ | X=466846.2528 | Y=4212106.8062 |
| ε3/ | X=466859.8158 | Y=4212151.3470 |
| ζ3/ | X=466861.4331 | Y=4212201.7358 |
| η3/ | X=466858.9229 | Y=4212248.6443 |
| θ3/ | X=466858.0735 | Y=4212256.9094 |
| ι3/ | X=466865.2355 | Y=4212256.5672 |
| κ3/ | X=466866.7194 | Y=4212224.0258 |
| λ3/ | X=466868.3135 | Y=4212203.3133 |
| μ3/ | X=466874.0523 | Y=4212172.4043 |
| ν3/ | X=466871.1828 | Y=4212145.3189 |
| ξ3/ | X=466852.0493 | Y=4212083.4253 |
| ο3/ | X=466845.4063 | Y=4212054.8264 |

Γο παρόν ανήκει αναπόσπαστα στο 42703/1601/31-5-16 έγγραφο του Δασαρχείου Αιγάλεω.
Αιγάλεω 31-5-16
Ο Δασάρχης

Βιρήνη Σούρα
Δασολόγος



Εκταση 7 εμβαδού (11,652 στρ.)

| | | |
|-------|---------------|----------------|
| 114/ | X=468009.8400 | Y=4211886.1600 |
| 113/ | X=468057.4100 | Y=4211917.0000 |
| 112/ | X=468095.4300 | Y=4211956.1900 |
| 111'/ | X=468123.0826 | Y=4212016.4195 |
| 116'/ | X=468168.8900 | Y=4211815.6000 |
| 116/ | X=468117.2300 | Y=4211880.2200 |
| 115/ | X=468063.4200 | Y=4211835.3500 |

Αιγάλεω 27-5-16
Η Σουταπης
Β. οικονομική
Διακομιδή

ς 1(γ) προκύπτουν από
από την έκταση (1).

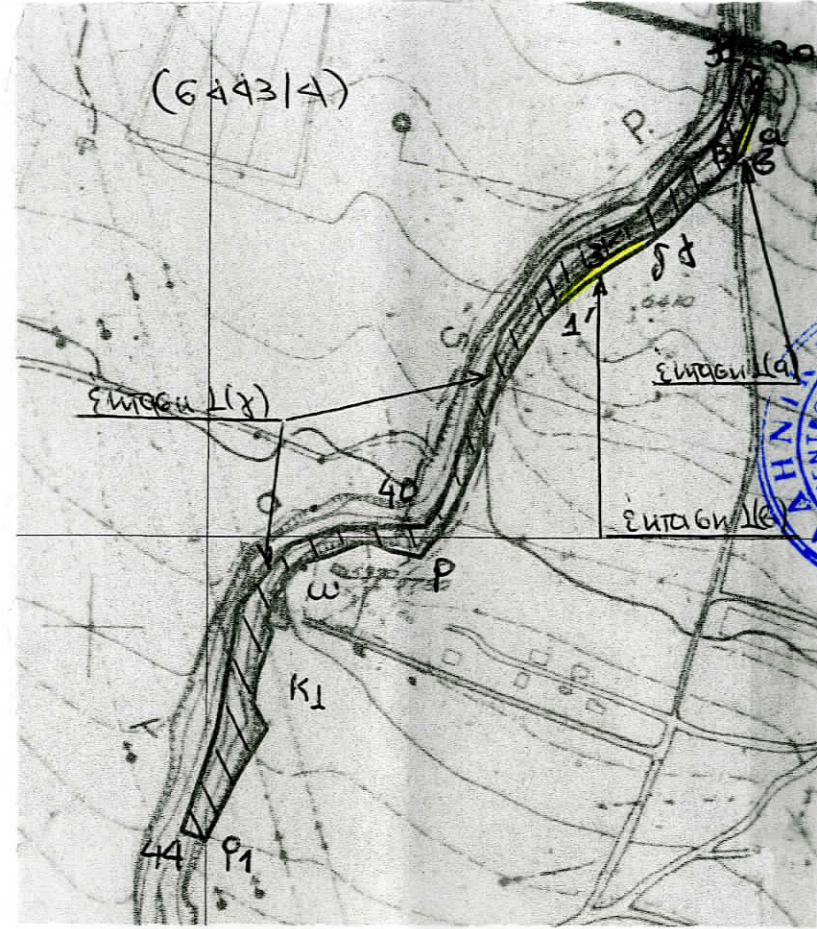
ΤΟΠΟΓΡΑΦΙΚΟ ΔΙΑΓΡΑΜΜΑ

επί αποσπασμάτων χαρτών Γ.Υ.Σ. κλίμακας 1:5.000 (6443/4) & (6444/3) των εκτάσεων και συγκεκριμένα: έκταση 1(α), έκταση 1(β), έκταση 1(γ), έκταση (3), (5), έκταση 6(α) και έκταση (7) όπως αυτές αναλυτικά απεικονίζονται στο εν λόγω

Έκταση (1) συνολικού εμβαδού (12,163 στρ.) αποτελούμενη από: έκταση 1(α) εμβαδού (0,207 στρ.) & έκταση 1(β) εμβαδού (0,441 στρ.) & έκταση 1(γ) εμβαδού (11,515 στρ.)

Συντεταγμένες έκταση (1)

- 44/ X=465675.7100 Y=4212742.2500
- 43/ X=465698.8600 Y=4212810.5300
- 42/ X=465713.1400 Y=4212891.3000
- 41/ X=465747.6700 Y=4212932.6800
- 40/ X=465779.6100 Y=4212943.9600
- 39/ X=465837.5300 Y=4212945.0200
- 38/ X=465847.3800 Y=4212958.4900
- 37/ X=465888.7400 Y=4213077.3800
- 36/ X=465906.4400 Y=4213098.9500
- 35/ X=465927.9500 Y=4213129.1700
- 34/ X=465972.9500 Y=4213148.1800
- 33/ X=466009.3900 Y=4213182.9200
- 32/ X=466030.0500 Y=4213203.1400
- 31/ X=466047.7200 Y=4213251.8400
- 30/ X=466061.2000 Y=4213248.3200
- α/ X=466057.0039 Y=4213219.8342
- β/ X=466047.1097 Y=4213192.9872
- γ/ X=466005.9481 Y=4213151.7376
- δ/ X=465999.5182 Y=4213145.0360
- ε/ X=465982.0866 Y=4213131.3443
- ζ/ X=465962.9118 Y=4213119.3951
- η/ X=465943.4881 Y=4213106.9481
- θ/ X=465925.3094 Y=4213091.7627
- ι/ X=465915.5975 Y=4213082.3030
- κ/ X=465897.4189 Y=4213054.1727
- λ/ X=465884.9981 Y=4213034.1637
- μ/ X=465879.5442 Y=4213024.0772
- ν/ X=465871.9087 Y=4212990.9554
- ξ/ X=465861.6096 Y=4212968.1057
- ο/ X=465847.3529 Y=4212940.5428
- π/ X=465839.5341 Y=4212932.4259
- ρ/ X=465834.4218 Y=4212924.6097
- σ/ X=465814.1228 Y=4212928.8184
- τ/ X=465802.2585 Y=4212934.1160
- υ/ X=465797.6193 Y=4212934.1160
- φ/ X=465793.8089 Y=4212933.7551
- χ/ X=465773.6597 Y=4212925.9579
- ψ/ X=465754.9550 Y=4212920.6877
- ω/ X=465749.1053 Y=4212917.0780
- α1/ X=465746.2887 Y=4212915.1287
- β1/ X=465741.6667 Y=4212906.4652
- γ1/ X=465742.5535 Y=4212903.9895
- δ1/ X=465739.0071 Y=4212900.5919
- ε1/ X=465737.5294 Y=4212896.0127
- ζ1/ X=465733.8352 Y=4212889.9563
- η1/ X=465731.3232 Y=4212881.8318
- θ1/ X=465735.6084 Y=4212874.8890
- ι1/ X=465732.5053 Y=4212866.3214
- κ1/ X=465730.4366 Y=4212859.2309
- λ1/ X=465726.0036 Y=4212847.7089
- μ1/ X=465723.4916 Y=4212836.9254
- ν1/ X=465723.0617 Y=4212826.6120
- ξ1/ X=465731.7665 Y=4212810.7793
- ο1/ X=465718.5014 Y=4212788.7385
- π1/ X=465710.6252 Y=4212775.6518
- ρ1/ X=465691.0636 Y=4212736.1652

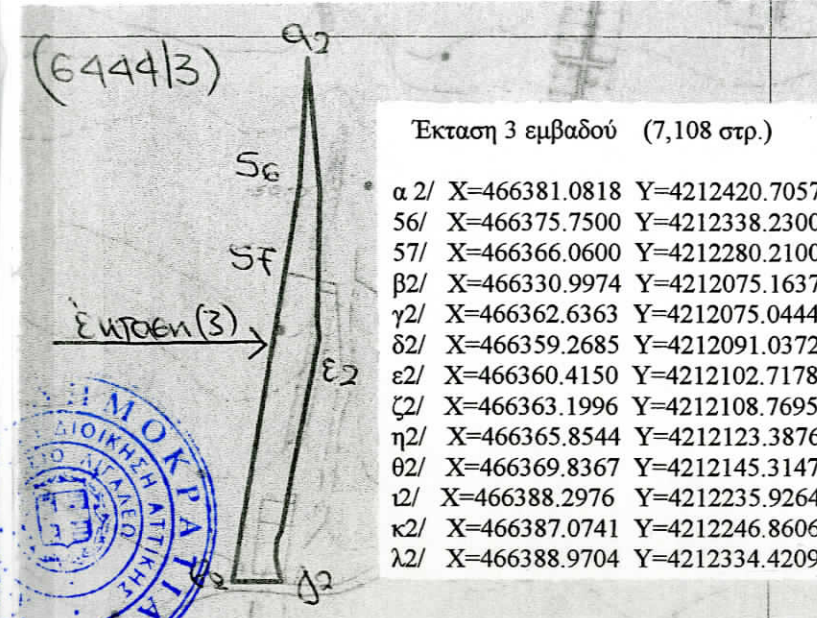


Συντεταγμένες έκταση 1(α)

- B/ X=466040.3674 Y=4213190.6443
- Γ/ X=466050.0782 Y=4213213.7062
- Δ/ X=466058.3591 Y=4213236.3895
- E/ X=466059.7348 Y=4213238.3745
- α/ X=466057.0039 Y=4213219.8342
- β/ X=466047.1097 Y=4213192.9872
- A/ X=466040.4140 Y=4213186.2770

Συντεταγμένες έκταση 1(β)

- ε/ X=465982.0866 Y=4213131.3443
- ζ/ X=465962.9118 Y=4213119.3951
- η/ X=465943.4881 Y=4213106.9481
- θ/ X=465925.3094 Y=4213091.7627
- ι/ X=465920.6055 Y=4213087.1798
- 2/ X=465925.3713 Y=4213097.1693
- 3/ X=465947.8275 Y=4213117.2652
- 4/ X=465969.6716 Y=4213131.0541
- δ/ X=465999.5182 Y=4213145.0360

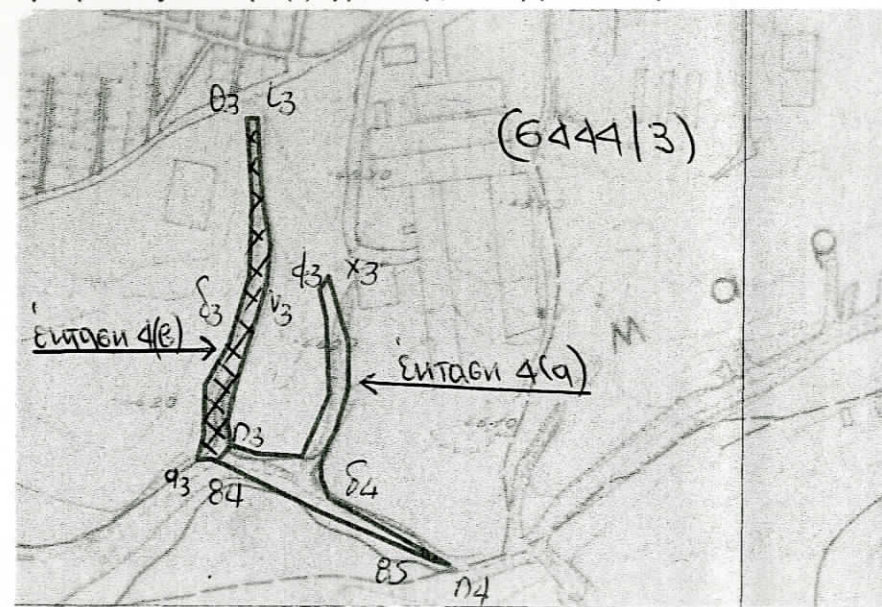


Εκταση 3 εμβαδού (7,108 στρ.)

- α 2/ X=466381.0818 Y=4212420.7057
- 56/ X=466375.7500 Y=4212338.2300
- 57/ X=466366.0600 Y=4212280.2100
- β2/ X=466330.9974 Y=4212075.1637
- γ2/ X=466362.6363 Y=4212075.0444
- δ2/ X=466359.2685 Y=4212091.0372
- ε2/ X=466360.4150 Y=4212102.7178
- ζ2/ X=466363.1996 Y=4212108.7695
- η2/ X=466365.8544 Y=4212123.3876
- θ2/ X=466369.8367 Y=4212145.3147
- ι2/ X=466388.2976 Y=4212235.9264
- κ2/ X=466387.0741 Y=4212246.8606
- λ2/ X=466388.9704 Y=4212334.4209

Έκταση 4 εμβαδόν (6,395 στρ.) αποτελούμενη από τις: έκταση 4 (α) εμβαδού (3,540 στρ.) & έκταση 4(β) εμβαδού (2,855 στρ.)

- α3/ X=466825.7563 Y=4212030.1755
- β3/ X=466829.6616 Y=4212046.8240
- γ3/ X=466830.5614 Y=4212079.6560
- δ3/ X=466846.2528 Y=4212106.8062
- ε3/ X=466859.8158 Y=4212151.3470
- ζ3/ X=466861.4331 Y=4212201.7358
- η3/ X=466858.9229 Y=4212248.6443
- θ3/ X=466858.0735 Y=4212256.9094
- ι3/ X=466865.2355 Y=4212256.5672
- κ3/ X=466866.7194 Y=4212224.0258
- λ3/ X=466868.3135 Y=4212203.3133
- μ3/ X=466874.0523 Y=4212172.4043
- ν3/ X=466871.1828 Y=4212145.3189
- ξ3/ X=466852.0493 Y=4212083.4253
- ο3/ X=466845.4063 Y=4212054.8264
- π3/ X=466848.4585 Y=4212039.7749
- ρ3/ X=466865.0600 Y=4212033.9724
- σ3/ X=466895.0254 Y=4212032.4736
- τ3/ X=466913.1172 Y=4212073.3933
- υ3/ X=466911.1330 Y=4212123.7078
- φ3/ X=466906.2927 Y=4212142.7152
- χ3/ X=466912.4341 Y=4212151.4496
- ψ3/ X=466925.9075 Y=4212107.3743
- ω3/ X=466925.9075 Y=4212077.6340
- α4/ X=466918.1143 Y=4212050.7262
- β4/ X=466911.8332 Y=4212038.6941
- γ4/ X=466907.3178 Y=4212027.5043
- δ4/ X=466907.8316 Y=4212017.5877
- ε4/ X=466910.1799 Y=4212011.9505
- ζ4/ X=466912.7258 Y=4212004.8473
- η4/ X=466992.5794 Y=4211960.2684
- θ4/ X=466982.9100 Y=4211963.0000
- ι4/ X=466992.5794 Y=4211960.2684
- κ4/ X=466910.1799 Y=4212011.9505
- λ4/ X=466911.8332 Y=4212038.6941
- μ4/ X=466918.1143 Y=4212050.7262
- ν4/ X=466925.9075 Y=4212077.6340
- ξ4/ X=466925.9075 Y=4212107.3743
- ο4/ X=466907.8316 Y=4212017.5877
- π4/ X=466907.3178 Y=4212027.5043
- ρ4/ X=466910.1799 Y=4212011.9505
- σ4/ X=466912.7258 Y=4212004.8473
- τ4/ X=466992.5794 Y=4211960.2684
- υ4/ X=466982.9100 Y=4211963.0000
- φ4/ X=466907.8316 Y=4212017.5877
- χ4/ X=466910.1799 Y=4212011.9505
- ψ4/ X=466911.8332 Y=4212038.6941
- ω4/ X=466918.1143 Y=4212050.7262
- α5/ X=466925.9075 Y=4212077.6340
- β5/ X=466925.9075 Y=4212107.3743
- γ5/ X=466912.4341 Y=4212151.4496
- δ5/ X=466906.2927 Y=4212142.7152
- ε5/ X=466911.1330 Y=4212123.7078
- ς5/ X=466913.1172 Y=4212073.3933
- ζ5/ X=466895.0254 Y=4212032.4736
- η5/ X=466865.0600 Y=4212033.9724
- θ5/ X=466848.4585 Y=4212039.7749
- ι5/ X=466838.7800 Y=4212029.1100
- κ5/ X=466834.8100 Y=4212030.5000



Συντεταγμένες έκτασης 4(α)

- π3/ X=466848.4585 Y=4212039.7749
- 84/ X=466838.7800 Y=4212029.1100
- 85/ X=466907.5000 Y=4211995.5000
- 04/ X=466982.9100 Y=4211963.0000
- ζ4/ X=466912.7258 Y=4212004.8473
- ε4/ X=466910.1799 Y=4212011.9505
- δ4/ X=466907.8316 Y=4212017.5877
- γ4/ X=466907.3178 Y=4212027.5043
- β4/ X=466911.8332 Y=4212038.6941
- α4/ X=466918.1143 Y=4212050.7262
- ω3/ X=466925.9075 Y=4212077.6340
- ψ3/ X=466925.9075 Y=4212107.3743
- χ3/ X=466912.4341 Y=4212151.4496
- φ3/ X=466906.2927 Y=4212142.7152
- υ3/ X=466911.1330 Y=4212123.7078
- τ3/ X=466913.1172 Y=4212073.3933
- σ3/ X=466895.0254 Y=4212032.4736
- ρ3/ X=466865.0600 Y=4212033.9724

Συντεταγμένες έκτασης 4(β)

- π3/ X=466848.4585 Y=4212039.7749
- 84/ X=466838.7800 Y=4212029.1100
- 83/ X=466834.8100 Y=4212030.5000
- α3/ X=466825.7563 Y=4212030.1755
- β3/ X=466829.6616 Y=4212046.8240
- γ3/ X=466830.5614 Y=4212079.6560
- δ3/ X=466846.2528 Y=4212106.8062
- ε3/ X=466859.8158 Y=4212151.3470
- ζ3/ X=466861.4331 Y=4212201.7358
- η3/ X=466858.9229 Y=4212248.6443
- θ3/ X=466858.0735 Y=4212256.9094
- ι3/ X=466865.2355 Y=4212256.5672
- κ3/ X=466866.7194 Y=4212224.0258
- λ3/ X=466868.3135 Y=4212203.3133
- μ3/ X=466874.0523 Y=4212172.4043
- ν3/ X=466871.1828 Y=4212145.3189
- ξ3/ X=466852.0493 Y=4212083.4253
- ο3/ X=466845.4063 Y=4212054.8264

Παρατήρηση: Οι συντεταγμένες της έκτασης 1(γ) προκύπτουν από την «αφαίρεση» των εκτάσεων 1(α) & 1(β) από την έκταση (1).