

Τοπογραφικό επί αποβλαβήματος
 χαρτών ΓΥΣ κλίμ. 1:5000 (6444/3 & 6444/5)

Εκταση (Γ1)

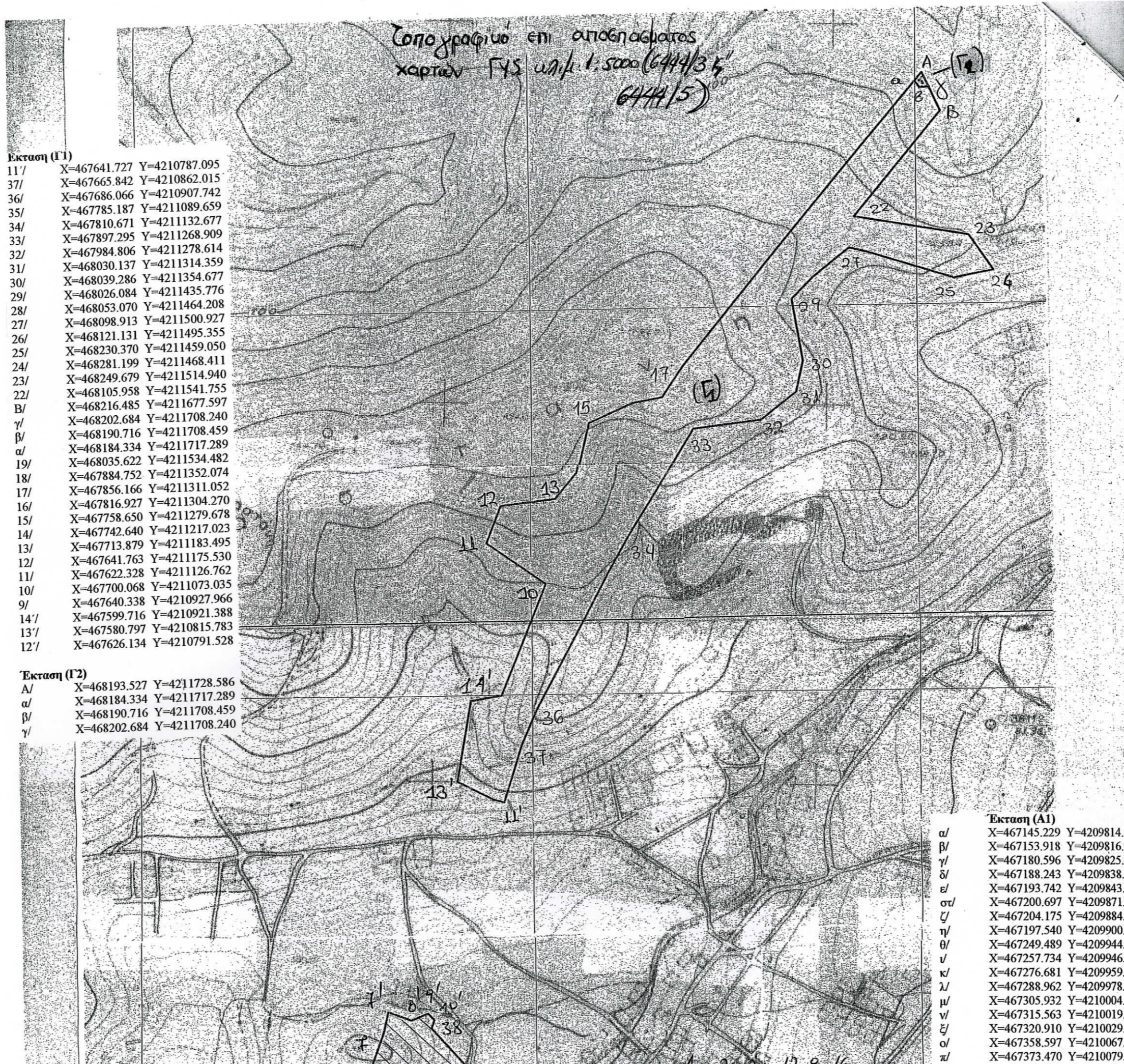
11'/	X=467641.727	Y=4210787.095
37/	X=467665.842	Y=4210862.015
36/	X=467686.066	Y=4210907.742
35/	X=467785.187	Y=4211089.659
34/	X=467810.671	Y=4211132.677
33/	X=467897.295	Y=4211268.909
32/	X=467984.806	Y=4211278.614
31/	X=468030.137	Y=4211314.359
30/	X=468039.286	Y=4211354.677
29/	X=468026.084	Y=4211435.776
28/	X=468053.070	Y=4211464.208
27/	X=468098.913	Y=4211500.927
26/	X=468121.131	Y=4211495.355
25/	X=468230.370	Y=4211459.050
24/	X=468281.199	Y=4211468.411
23/	X=468249.679	Y=4211514.940
22/	X=468105.958	Y=4211541.755
β/	X=468216.485	Y=4211677.597
γ/	X=468202.684	Y=4211708.240
β/	X=468190.716	Y=4211708.459
α/	X=468184.334	Y=4211717.289
19/	X=468035.622	Y=4211534.482
18/	X=467884.752	Y=4211352.074
17/	X=467856.166	Y=4211311.052
16/	X=467816.927	Y=4211304.270
15/	X=467758.650	Y=4211279.678
14/	X=467742.640	Y=4211217.023
13/	X=467713.879	Y=4211183.495
12/	X=467641.763	Y=4211175.530
11/	X=467622.328	Y=4211126.762
10/	X=467700.068	Y=4211073.035
9/	X=467640.338	Y=4210927.966
14'/	X=467599.716	Y=4210921.388
13'/	X=467580.797	Y=4210815.783
12'/	X=467626.134	Y=4210791.528

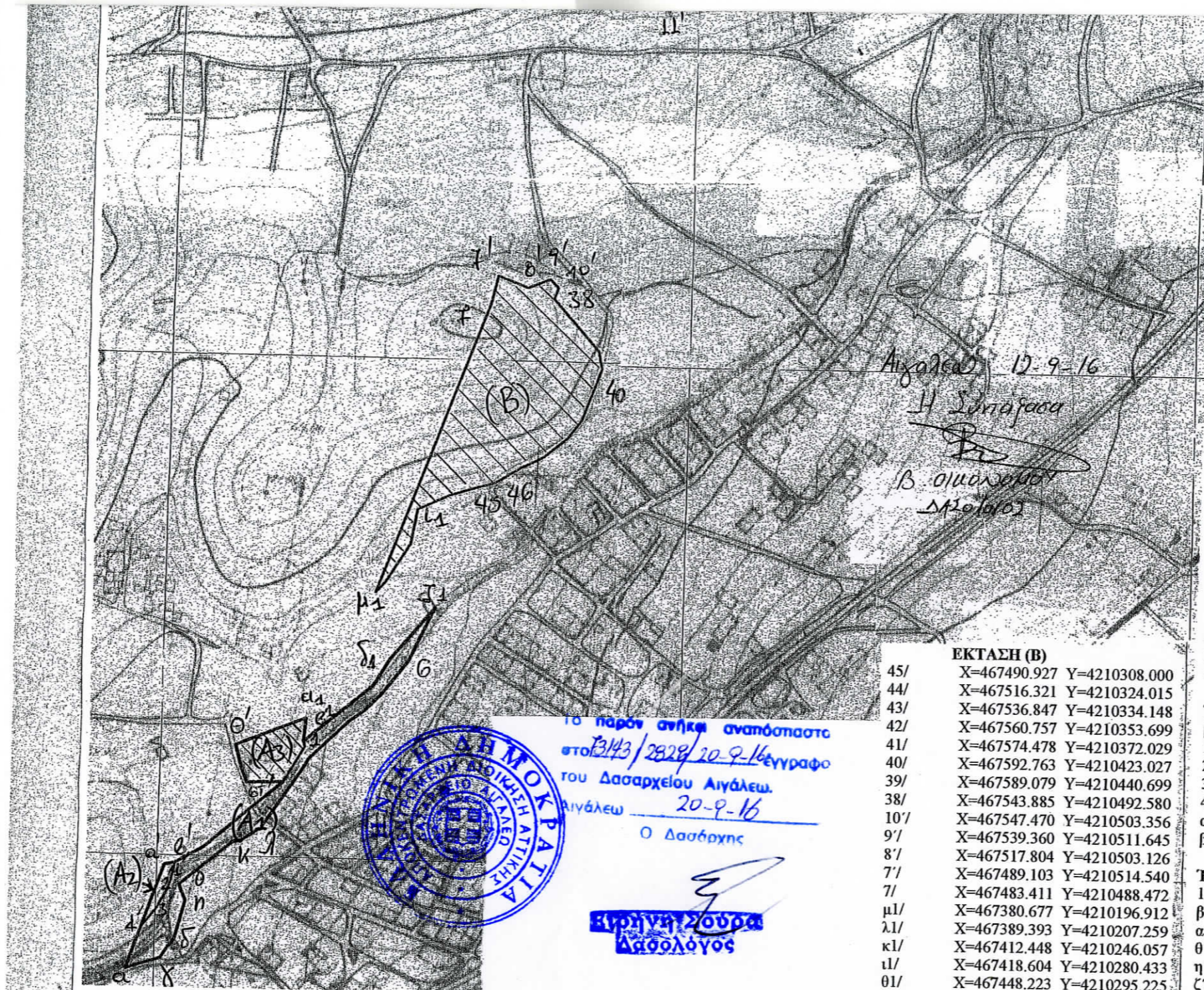
Εκταση (Γ2)

Α/	X=468193.527	Y=4211728.586
α/	X=468184.334	Y=4211717.289
β/	X=468190.716	Y=4211708.459
γ/	X=468202.684	Y=4211708.240

Εκταση (Α1)

α/	X=467145.229	Y=4209814.575
β/	X=467153.918	Y=4209816.902
γ/	X=467180.596	Y=4209825.856
δ/	X=467188.243	Y=4209838.205
ε/	X=467193.742	Y=4209843.842
σδ/	X=467200.697	Y=4209871.000
ζ/	X=467204.175	Y=4209884.578
η/	X=467197.540	Y=4209900.821
θ/	X=467249.489	Y=4209944.552
ι/	X=467257.734	Y=4209946.305
κ/	X=467276.681	Y=4209959.284
λ/	X=467288.962	Y=4209978.402
μ/	X=467305.932	Y=4210004.314
ν/	X=467315.563	Y=4210019.021
ξ/	X=467320.910	Y=4210029.265
ο/	X=467358.597	Y=4210067.484
π/	X=467373.470	Y=4210079.540





Αιγάλεω 12-9-16
 Η Σύμβαση
 Β. Οικονομική
 Διεύθυνση

ΕΚΤΑΣΗ (B)

45/	X=467490.927	Y=4210308.000
44/	X=467516.321	Y=4210324.015
43/	X=467536.847	Y=4210334.148
42/	X=467560.757	Y=4210353.699
41/	X=467574.478	Y=4210372.029
40/	X=467592.763	Y=4210423.027
39/	X=467589.079	Y=4210440.699
38/	X=467543.885	Y=4210492.580
10'/	X=467547.470	Y=4210503.356
9'/	X=467539.360	Y=4210511.645
8'/	X=467517.804	Y=4210503.126
7'/	X=467489.103	Y=4210514.540
7/	X=467483.411	Y=4210488.472
μ1/	X=467380.677	Y=4210196.912
λ1/	X=467389.393	Y=4210207.259
κ1/	X=467412.448	Y=4210246.057
ι1/	X=467418.604	Y=4210280.433
θ1/	X=467448.223	Y=4210295.225
η1/	X=467469.658	Y=4210302.124

Έκταση (A1)

α/	X=467145.229	Y=4209814.575
β/	X=467153.918	Y=4209816.902
γ/	X=467180.596	Y=4209825.856
δ/	X=467188.243	Y=4209838.205
ε/	X=467193.742	Y=4209843.842
στ/	X=467200.697	Y=4209871.000
ζ/	X=467204.175	Y=4209884.578
η/	X=467197.540	Y=4209900.821
θ/	X=467249.489	Y=4209944.552
ι/	X=467257.734	Y=4209946.305
κ/	X=467276.681	Y=4209959.284
λ/	X=467288.962	Y=4209978.402
μ/	X=467305.932	Y=4210004.314
ν/	X=467315.563	Y=4210019.021
ξ/	X=467320.910	Y=4210029.265
ο/	X=467358.597	Y=4210067.484
π/	X=467373.470	Y=4210079.540
ρ/	X=467387.841	Y=4210094.671
σ/	X=467413.035	Y=4210128.985
ζι/	X=467437.272	Y=4210182.380
στ1/	X=467425.798	Y=4210168.361
ει/	X=467396.245	Y=4210131.020
δι/	X=467380.760	Y=4210104.324
γι/	X=467357.534	Y=4210083.473
βι/	X=467315.748	Y=4210047.048
ι/	X=467317.290	Y=4210041.328
στ'/	X=467297.022	Y=4210005.690
ε'/	X=467267.410	Y=4209979.806
γ'/	X=467220.837	Y=4209939.098
β'/	X=467192.807	Y=4209923.093
ι'/	X=467190.351	Y=4209910.931
2'/	X=467186.128	Y=4209895.994
3'/	X=467174.432	Y=4209875.212
4'/	X=467160.137	Y=4209857.028

Έκταση (A2)

β'/	X=467192.807	Y=4209923.093
ι'/	X=467190.351	Y=4209910.931
2'/	X=467186.128	Y=4209895.994
3'/	X=467174.432	Y=4209875.212
4'/	X=467160.137	Y=4209857.028
α'/	X=467182.338	Y=4209920.566
β'/	X=467192.807	Y=4209923.093

Έκταση (A3)

ι/	X=467317.290	Y=4210041.328
βι/	X=467315.748	Y=4210047.048
αι/	X=467317.586	Y=4210069.978
θ/	X=467250.279	Y=4210042.353
η/	X=467255.642	Y=4210020.596
ζ/	X=467261.578	Y=4210005.079
στ/	X=467297.022	Y=4210005.690



το παρόν σχέδιο αναπόσπαστο
 στο 13143/2828/20-9-16 έγγραφο
 του Δασαρχείου Αιγάλεω.
 Αιγάλεω 20-9-16
 Ο Δασάρχης

Ειρήνη Σούρα
 Δασολόγος