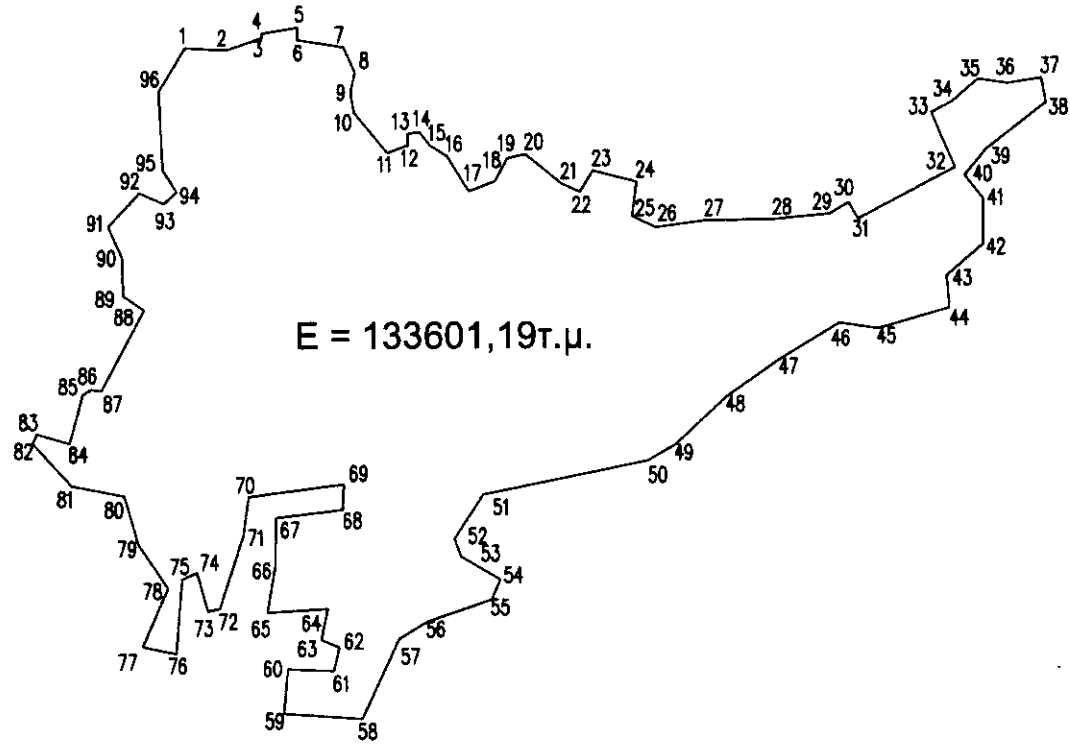
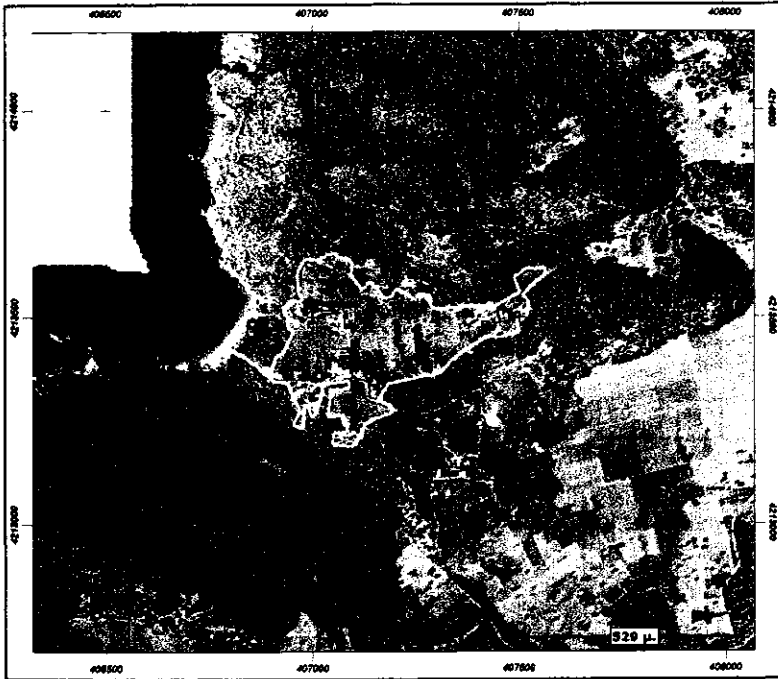


ΑΥΤΕΠΑΓΓΕΛΤΗ ΠΡΑΞΗ ΧΑΡΑΚΤΗΡΙΣΜΟΥ ΣΤΟΝ ΔΗΜΟ ΛΟΥΤΡΑΚΙΟΥ - ΑΓΙΩΝ ΘΕΟΔΩΡΩΝ Δ.Κ. ΠΕΡΑΧΩΡΑΣ ΠΕΡΙΟΧΗ ΣΚΑΛΩΣΙΑ ΑΣΠΡΟΚΑΜΠΟΥ

ΑΠΟΣΠΑΣΜΑ ΟΡΘΟΦΩΤΟΧΑΡΤΗ ΕΚΧΑ



ΑΝΗΚΕΙ ΣΤΗΝ ΥΠ ΑΡΙΘΜ. 159303  
ΠΡΑΞΗ ΧΑΡ. ΤΟΥ ΔΑΣ. ΚΟΡΙΝΘΟΥ  
ΚΟΡΙΝΘΟΣ 27/09/2016  
Ο ΔΑΣΑΡΧΗΣ

ΜΠΟΥΛΙΑΣ ΠΑΝΑΓΙΩΤΗΣ  
ΔΑΣΟΛΟΓΟΣ

Ο ΣΥΝΤΑΚΤΗΣ ΤΟΥ ΤΟΠΟΓΡΑΦΙΚΟΥ  
ΚΟΡΙΝΘΟΣ 27/09/2016

ΑΛΕΞΗΣ ΑΔΑΜ  
ΔΑΣΟΛΟΓΟΣ

### ΕΜΒΑΔΟΜΕΤΡΗΣΗ ΓΗΠΕΔΟΥ

Με τη βοήθεια  
των ορθογωνικών συντεταγμένων  
των κορυφών του

ΣΗΜΕΙΟ	X	Y	ΜΗΚΟΣ
1	406982.33	4213640.29	
2	407009.97	4213638.52	27.70
3	407034.31	4213646.74	25.69
4	407034.01	4213649.91	3.18
5	407058.17	4213653.69	24.46
6	407058.32	4213645.23	8.45
7	407089.58	4213640.40	31.63
8	407097.44	4213623.35	18.78
9	407094.42	4213609.16	14.51
10	407096.98	4213595.88	13.53
11	407119.09	4213568.95	34.84
12	407133.29	4213573.93	15.04
13	407132.98	4213581.63	7.70
14	407140.98	4213582.94	8.11
15	407147.78	4213573.93	11.28
16	407159.41	4213566.39	13.86
17	407174.06	4213542.69	27.86
18	407191.73	4213549.33	18.88
19	407199.91	4213564.75	17.45
20	407212.07	4213567.79	12.54
21	407236.50	4213547.95	31.47
22	407248.95	4213542.08	13.76
23	407257.77	4213556.59	16.99
24	407287.37	4213548.88	30.59
25	407284.27	4213525.71	23.38
26	407300.60	4213518.10	18.02
27	407334.03	4213522.71	33.74
28	407380.01	4213523.40	45.99
29	407417.96	4213526.93	38.11
30	407430.50	4213534.58	14.69
31	407436.88	4213523.60	12.71
32	407502.31	4213558.12	73.98
33	407486.41	4213594.99	40.16
34	407500.65	4213602.51	16.11
35	407518.15	4213617.70	23.18
36	407538.32	4213614.66	20.39
37	407560.92	4213618.37	22.91
38	407563.93	4213601.67	16.97
39	407523.50	4213570.28	51.19
40	407508.79	4213552.58	23.01
41	407521.41	4213536.88	20.14
42	407521.41	4213506.15	30.73
43	407496.62	4213484.94	32.62
44	407498.53	4213463.26	21.76
45	407450.38	4213449.45	50.09
46	407424.15	4213453.29	26.51
47	407384.36	4213429.03	46.60
48	407348.51	4213403.97	43.74
49	407313.53	4213371.35	47.83
50	407294.88	4213360.72	21.47
51	407183.81	4213337.96	113.37
52	407164.38	4213308.22	35.53
53	407168.67	4213296.31	12.66
54	407194.89	4213280.82	30.45
55	407189.41	4213267.24	14.64
56	407146.22	4213252.60	45.60
57	407126.97	4213240.98	22.49
58	407102.13	4213187.08	59.34

58	407102.13	4213187.08	
59	407048.73	4213190.89	53.53
60	407051.59	4213220.91	30.15
61	407082.82	4213219.48	31.26
62	407086.49	4213235.43	16.37
63	407074.24	4213240.45	13.24
64	407078.53	4213261.41	21.40
65	407037.64	4213259.10	40.95
66	407042.82	4213289.16	30.51
67	407043.70	4213322.92	33.78
68	407088.69	4213328.09	45.28
69	407089.73	4213345.36	17.30
70	407025.14	4213337.29	65.09
71	407021.56	4213311.57	25.97
72	407005.53	4213261.93	52.17
73	406997.67	4213260.02	8.09
74	406989.97	4213286.14	27.23
75	406980.14	4213281.70	10.78
76	406976.22	4213231.67	50.18
77	406953.56	4213236.43	23.15
78	406970.49	4213275.98	43.02
79	406950.71	4213305.28	35.36
80	406941.33	4213338.13	34.16
81	406905.54	4213345.29	36.50
82	406879.32	4213374.01	38.89
83	406882.25	4213380.39	7.01
84	406904.31	4213373.67	23.06
85	406913.10	4213406.74	34.22
86	406918.80	4213410.10	6.62
87	406925.69	4213409.07	6.97
88	406954.65	4213463.50	61.65
89	406940.32	4213473.21	17.31
90	406939.81	4213499.40	26.19
91	406930.49	4213519.80	22.43
92	406951.36	4213542.60	30.91
93	406968.11	4213535.08	18.36
94	406976.36	4213543.09	11.50
95	406967.03	4213557.98	17.57
96	406964.68	4213611.19	53.26
1	406982.33	4213640.29	34.03

$$E = 1/2 \sum (X_i + X_{i+1})(Y_i - Y_{i+1})$$

$$E = 133601.19 \mu^2$$