

ΘΕΣΗ ΙΔΙΟΚΤΗΣΙΩΝ -ΧΑΡΤΗ ΓΥΣ ΚΑΙ 1:5000



ΘΕΣΗ ΙΔΙΟΚΤΗΣΙΩΝ -ΑΕΡΟΦΩΤΟΓΡΑΦΙΑ ΠΕΡΙΟΧΗΣ ΚΑΙ 1:5000

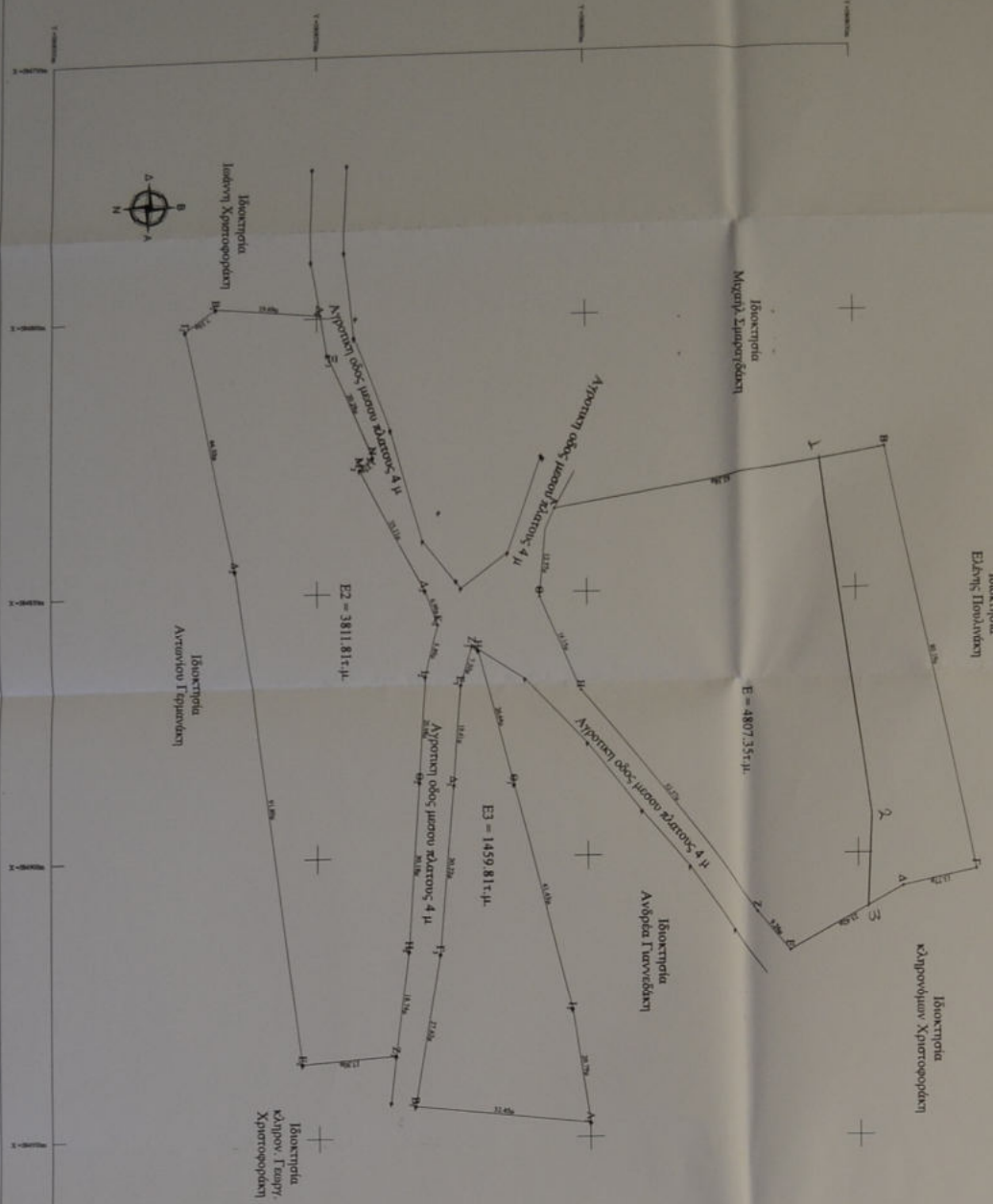
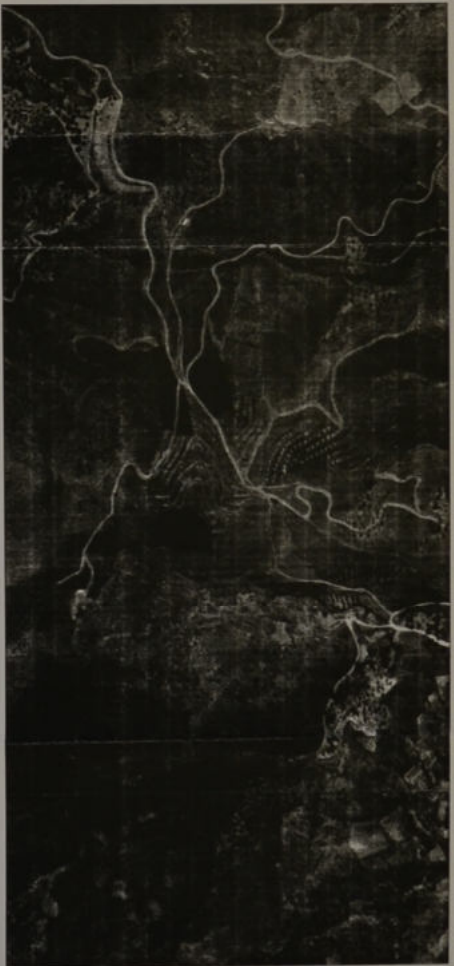


Table with 3 columns: Station, X (m), Y (m), and Elevation (m). It lists coordinates for points A1 through A14.

Table with 3 columns: Station, X (m), Y (m), and Elevation (m). It lists coordinates for points B1 through B14.

Table with 3 columns: Station, X (m), Y (m), and Elevation (m). It lists coordinates for points C1 through C14.

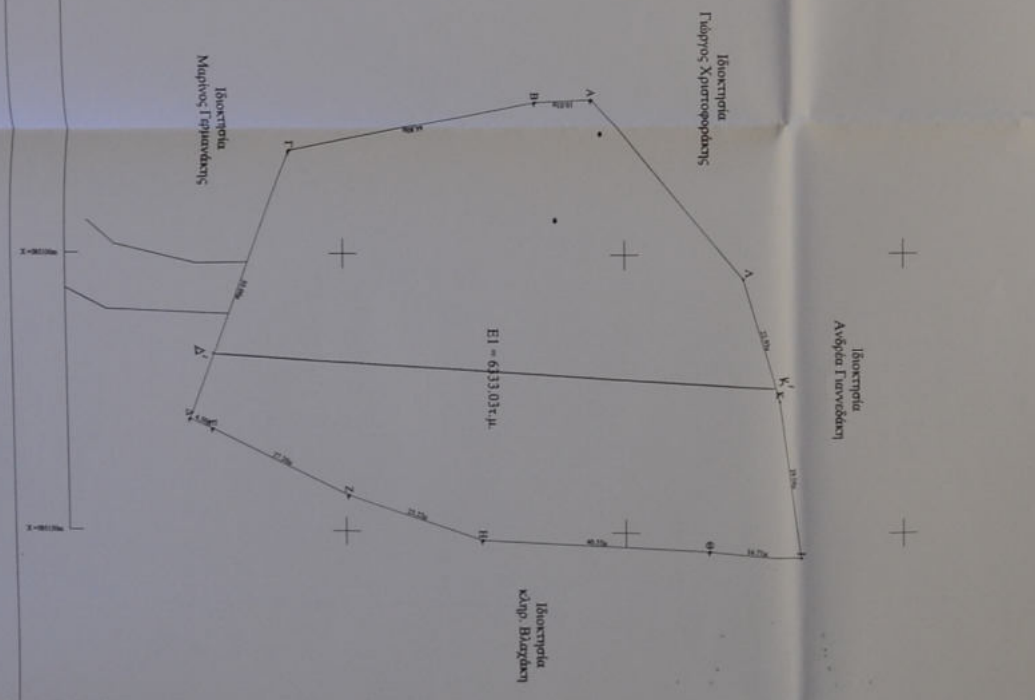


Table with 3 columns: Station, X (m), Y (m), and Elevation (m). It lists coordinates for points A1 through A14.

Table with 3 columns: Station, X (m), Y (m), and Elevation (m). It lists coordinates for points B1 through B14.

Table with 3 columns: Station, X (m), Y (m), and Elevation (m). It lists coordinates for points C1 through C14.

ΓΕΝΙΚΟΙ ΟΡΟΙ ΔΟΜΗΣΗΣ... ΠΡΟΒΛΕΨΗ ΤΟΥ ΚΕΝΤΑΙ ΕΚΤΟΣ... ΠΡΑΞΗ... ΕΠΙΣΤΗΜΟΝΙΚΗ... ΑΝΑΓΝΩΣΤΗΡΙΟΝ... ΑΝΑΓΝΩΣΤΗΡΙΟΝ... ΑΝΑΓΝΩΣΤΗΡΙΟΝ...

Official planning document header including the title 'ΤΟΠΟΓΡΑΦΙΚΟ ΔΙΑΓΡΑΜΜΑ', scale '1/500', and various official stamps and signatures.