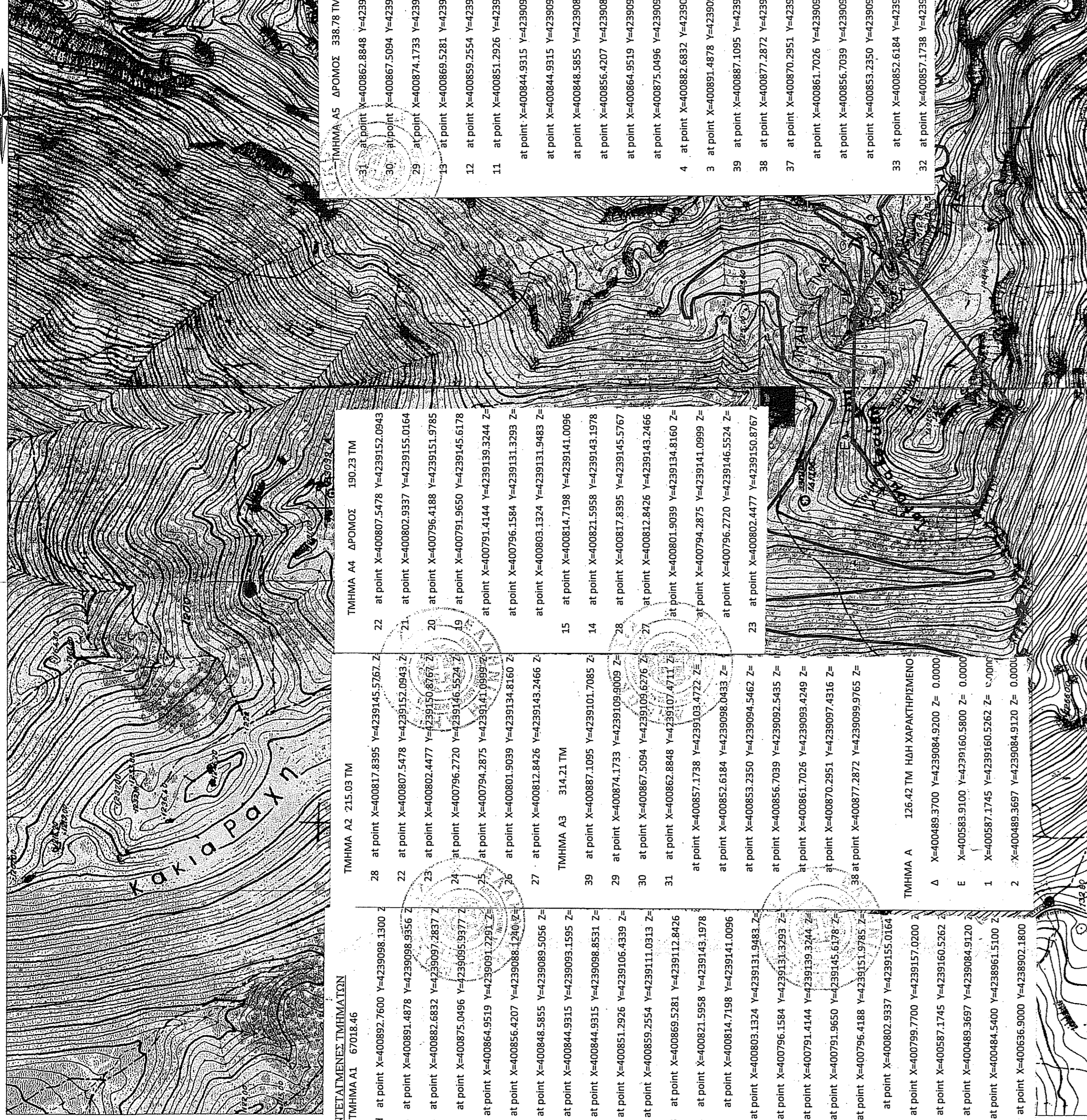
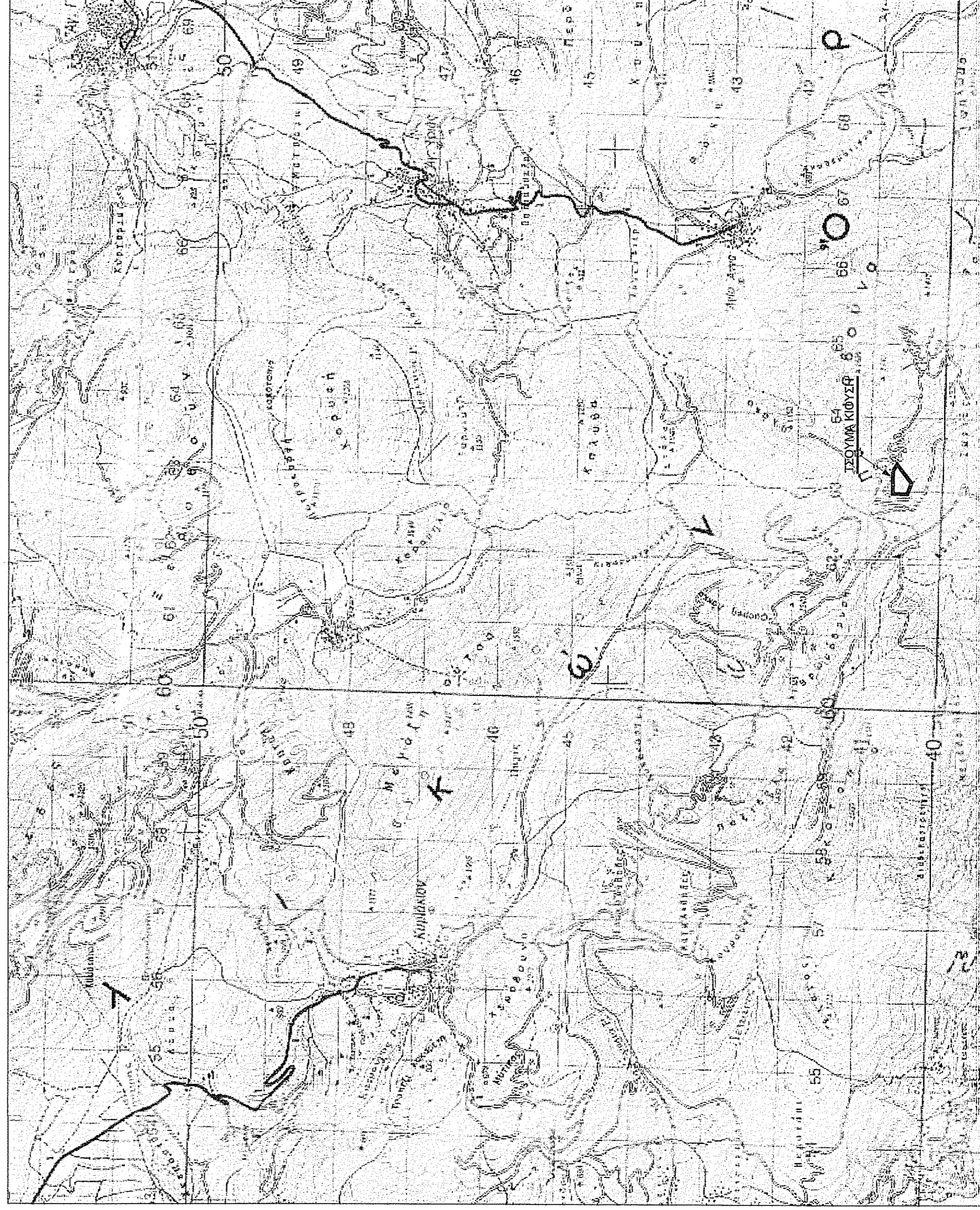


ΦΥΛΟ ΧΑΡΤΗ Γ.Υ.Σ. 6316/7.8 & 6326/1,2 ΚΛΙΜΑΚΑ 1:5.000
ΟΡΘΟΦΩΤΟΧΑΡΤΗΣ 396-239&400-239 ΚΛΙΜΑΚΑ 1:5.000



ΣΥΝΤΕΤΑΓΜΕΝΕΣ ΤΜΗΜΑΤΩΝ	ΤΜΗΜΑ Α1 67018.46	ΤΜΗΜΑ Α2 215.03 ΤΜ	ΤΜΗΜΑ Α4 ΔΡΟΜΟΣ 190.23 ΤΜ	ΤΜΗΜΑ Α5 ΔΡΟΜΟΣ 338.78 ΤΜ
H	at point X=400892.7600 Y=4239098.1300 Z=	28 at point X=400817.8395 Y=4239145.5767 Z=	22 at point X=400807.5478 Y=4239152.0943 Z=	31 at point X=400862.8848 Y=4239107.4711 Z=
3	at point X=400891.4878 Y=4239096.9595 Z=	22 at point X=400807.5478 Y=4239152.0943 Z=	21 at point X=400802.9337 Y=4239155.0164 Z=	30 at point X=400867.5094 Y=4239109.6276 Z=
4	at point X=400882.6832 Y=4239097.2837 Z=	23 at point X=400802.4477 Y=4239150.8767 Z=	20 at point X=400796.4188 Y=4239151.9785 Z=	29 at point X=400874.1733 Y=4239109.9009 Z=
5	at point X=400875.0496 Y=4239095.9377 Z=	24 at point X=400796.2720 Y=4239146.5524 Z=	19 at point X=400791.9650 Y=4239145.6178 Z=	13 at point X=400869.5281 Y=4239112.8426 Z=
6	at point X=400881.1280 Z=	26 at point X=400794.2875 Y=4239142.1989 Z=	18 at point X=400791.4144 Y=4239139.3244 Z=	12 at point X=400852.2554 Y=4239111.0313 Z=
7	at point X=400888.1280 Z=	26 at point X=400801.9039 Y=4239134.8160 Z=	17 at point X=400796.1584 Y=4239131.3293 Z=	11 at point X=400851.2926 Y=4239106.4939 Z=
8	at point X=400844.5915 Y=4239093.1595 Z=	27 at point X=400812.8426 Y=4239143.2466 Z=	16 at point X=400814.7198 Y=4239131.9483 Z=	at point X=400844.9315 Y=4239088.8531 Z=
9	at point X=400851.2926 Y=4239106.4339 Z=	27 at point X=400812.8426 Y=4239143.2466 Z=	15 at point X=400814.7198 Y=4239131.9483 Z=	at point X=400844.9315 Y=4239088.8531 Z=
10	at point X=400859.2554 Y=4239111.0313 Z=	28 at point X=400817.8395 Y=4239145.5767 Z=	14 at point X=400814.7198 Y=4239131.9483 Z=	at point X=400848.5855 Y=4239089.5056 Z=
11	at point X=400869.5281 Y=4239112.8426 Z=	28 at point X=400817.8395 Y=4239145.5767 Z=	14 at point X=400814.7198 Y=4239131.9483 Z=	at point X=400856.4207 Y=4239088.1240 Z=
12	at point X=400874.1733 Y=4239109.9009 Z=	27 at point X=400812.8426 Y=4239143.2466 Z=	13 at point X=400812.8426 Y=4239143.2466 Z=	at point X=400864.9519 Y=4239091.2291 Z=
13	at point X=400882.6832 Y=4239107.4711 Z=	27 at point X=400812.8426 Y=4239143.2466 Z=	12 at point X=400812.8426 Y=4239143.2466 Z=	at point X=400875.0496 Y=4239095.9377 Z=
14	at point X=400885.2554 Y=4239111.0313 Z=	27 at point X=400812.8426 Y=4239143.2466 Z=	11 at point X=400812.8426 Y=4239143.2466 Z=	4 at point X=400882.6832 Y=4239097.2837 Z=
15	at point X=400888.1280 Z=	28 at point X=400817.8395 Y=4239145.5767 Z=	10 at point X=400812.8426 Y=4239143.2466 Z=	3 at point X=400891.4878 Y=4239098.9356 Z=
16	at point X=400891.4878 Y=4239098.9356 Z=	28 at point X=400817.8395 Y=4239145.5767 Z=	9 at point X=400812.8426 Y=4239143.2466 Z=	39 at point X=400887.1095 Y=4239101.7085 Z=
17	at point X=400892.7600 Y=4239098.1300 Z=	28 at point X=400817.8395 Y=4239145.5767 Z=	8 at point X=400812.8426 Y=4239143.2466 Z=	38 at point X=400877.2872 Y=4239099.9765 Z=
18	at point X=400895.2554 Y=4239106.4339 Z=	29 at point X=400821.8426 Y=4239146.5524 Z=	7 at point X=400812.8426 Y=4239143.2466 Z=	37 at point X=400877.2872 Y=4239097.4316 Z=
19	at point X=400898.1280 Z=	29 at point X=400821.8426 Y=4239146.5524 Z=	6 at point X=400812.8426 Y=4239143.2466 Z=	at point X=400861.7026 Y=4239093.4249 Z=
20	at point X=400901.2291 Z=	30 at point X=400826.8426 Y=4239147.5771 Z=	5 at point X=400812.8426 Y=4239143.2466 Z=	at point X=400856.7039 Y=4239092.5435 Z=
21	at point X=400904.1733 Y=4239109.9009 Z=	30 at point X=400826.8426 Y=4239147.5771 Z=	4 at point X=400812.8426 Y=4239143.2466 Z=	at point X=400902.7600 Y=4239102.9100 Z=
22	at point X=400907.1280 Z=	31 at point X=400831.8426 Y=4239148.6028 Z=	3 at point X=400812.8426 Y=4239143.2466 Z=	32 at point X=400902.7600 Y=4239102.9100 Z=
23	at point X=400910.0771 Y=4239107.4711 Z=	31 at point X=400831.8426 Y=4239148.6028 Z=	2 at point X=400812.8426 Y=4239143.2466 Z=	31 at point X=400907.1280 Y=4239102.9100 Z=
24	at point X=400913.0271 Y=4239109.9009 Z=	32 at point X=400836.8426 Y=4239149.6285 Z=	1 at point X=400812.8426 Y=4239143.2466 Z=	33 at point X=400907.1280 Y=4239102.9100 Z=
25	at point X=400916.0771 Y=4239112.8426 Z=	32 at point X=400836.8426 Y=4239149.6285 Z=	0 at point X=400812.8426 Y=4239143.2466 Z=	32 at point X=400907.1280 Y=4239102.9100 Z=
26	at point X=400919.1280 Z=	33 at point X=400841.8426 Y=4239150.6542 Z=		33 at point X=400907.1280 Y=4239102.9100 Z=
27	at point X=400922.1771 Y=4239115.2991 Z=	33 at point X=400841.8426 Y=4239150.6542 Z=		32 at point X=400907.1280 Y=4239102.9100 Z=
28	at point X=400925.2271 Y=4239117.7491 Z=	34 at point X=400846.8426 Y=4239151.6800 Z=		31 at point X=400907.1280 Y=4239102.9100 Z=
29	at point X=400928.2771 Y=4239120.2011 Z=	34 at point X=400846.8426 Y=4239151.6800 Z=		30 at point X=400907.1280 Y=4239102.9100 Z=
30	at point X=400931.3271 Y=4239122.6531 Z=	35 at point X=400851.8426 Y=4239152.7058 Z=		29 at point X=400907.1280 Y=4239102.9100 Z=
31	at point X=400934.3771 Y=4239125.1051 Z=	35 at point X=400851.8426 Y=4239152.7058 Z=		28 at point X=400907.1280 Y=4239102.9100 Z=
32	at point X=400937.4271 Y=4239127.5571 Z=	36 at point X=400856.8426 Y=4239153.7316 Z=		27 at point X=400907.1280 Y=4239102.9100 Z=
33	at point X=400940.4771 Y=4239130.0091 Z=	36 at point X=400856.8426 Y=4239153.7316 Z=		26 at point X=400907.1280 Y=4239102.9100 Z=
34	at point X=400943.5271 Y=4239132.4611 Z=	37 at point X=400861.8426 Y=4239154.7574 Z=		25 at point X=400907.1280 Y=4239102.9100 Z=
35	at point X=400946.5771 Y=4239134.9131 Z=	37 at point X=400861.8426 Y=4239154.7574 Z=		24 at point X=400907.1280 Y=4239102.9100 Z=
36	at point X=400949.6271 Y=4239137.3651 Z=	38 at point X=400866.8426 Y=4239155.7832 Z=		23 at point X=400907.1280 Y=4239102.9100 Z=
37	at point X=400952.6771 Y=4239139.8171 Z=	38 at point X=400866.8426 Y=4239155.7832 Z=		22 at point X=400907.1280 Y=4239102.9100 Z=
38	at point X=400955.7271 Y=4239141.2691 Z=	39 at point X=400871.8426 Y=4239156.8130 Z=		21 at point X=400907.1280 Y=4239102.9100 Z=
39	at point X=400958.7771 Y=4239143.7211 Z=	39 at point X=400871.8426 Y=4239156.8130 Z=		20 at point X=400907.1280 Y=4239102.9100 Z=
40	at point X=400961.8271 Y=4239146.1731 Z=	40 at point X=400876.8426 Y=4239157.8388 Z=		19 at point X=400907.1280 Y=4239102.9100 Z=
41	at point X=400964.8771 Y=4239148.6251 Z=	40 at point X=400876.8426 Y=4239157.8388 Z=		18 at point X=400907.1280 Y=4239102.9100 Z=

ΟΔΟΙΠΟΡΙΚΟ ΚΛΙΜΑΚΑ 1:50.000
ΦΥΛΟ ΧΑΡΤΟΥ 188 ΛΙΒΑΔΕΙΑ



ΣΥΝΤΕΤΑΓΜΕΝΕΣ ΚΟΡΥΦΩΝ ΠΟΛΥΓΩΝΟΥ

Ε= 68082.97 Τ.μ.

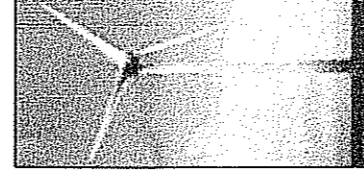
ΕΜΒΛΩΝ ΠΟΛΥΓΩΝΟΥ	Ε= 68082.97 Τ.μ.	Κορυφές	X	Y	Πλευρές
Δ	400489.37	4239084.92	123.71		
Ε	400583.91	4239160.58	212.56		
Ζ	400799.77	4239157.02	110.07		
Η	400892.76	4239098.13	322.28		
Θ	400636.90	4238902.18	163.50		
Ι	400484.54	4238961.51	123.50		

ΣΥΝΤΕΤΑΓΜΕΝΕΣ ΔΡΟΜΟΥ 1	Κορυφές	X	Y	Πλευρές
1	400840.5	4239148.4	19.25	
2	400821.2	4239148.7	18.62	
3	400806.8	4239142.7	8.11	
4	400798.8	4239141.3	4.31	
5	400796.9	4239145.2	7.07	
6	400803.1	4239148.5	25.20	
7	400827.6	4239154.3	5.62	
8	400855.8	4239159.6	16.51	
9	400809.5	4239156.7	20.16	
10	400790.4	4239150.4	7.07	
11	400787.7	4239143.9	8.45	
12	400789.1	4239135.6	7.99	
13	400796.0	4239131.5	6.00	
14	400802.0	4239131.5	8.68	
15	400808.5	4239137.2	7.15	
16	400814.3	4239141.4	14.03	
17	400828.3	4239142.6	13.55	
18	400841.8	4239141.4	7.15	

ΣΥΝΤΕΤΑΓΜΕΝΕΣ ΔΡΟΜΟΥ 2	Κορυφές	X	Y	Πλευρές
20	400888.3	4239118.1	18.98	
21	400869.6	4239115.1	18.80	
22	400850.9	4239112.9	8.73	
23	400843.1	4239109.0	7.23	
24	400839.9	4239102.5	7.10	
25	400839.9	4239095.4	6.18	
26	400842.8	4239090.0	9.46	
27	400851.7	4239086.7	13.74	
28	400865.1	4239089.6	28.93	
29	400892.8	4239098.1	11.42	
30	400904.7	4239099.0	4.13	
31	400902.8	4239102.9	10.72	
32	400892.1	4239102.9	18.99	
33	400873.8	4239097.7	9.31	
34	400864.9	4239094.9	8.27	
35	400856.9	4239093.0	3.70	
36	400853.4	4239094.4	3.48	
37	400850.8	4239096.8	4.08	
38	400850.8	4239100.8	15.81	
39	400864.9	4239108.0	17.60	
40	400882.5	4239109.0	8.07	
41	400890.2	4239111.5	6.88	

ΠΑΡΑΤΗΡΗΣΕΙΣ

- α) Τα όρια υπεδείξε ο Κων/νος Μαυρουδής.
- β) Το εμβαδόν υπολογίσθηκε με συντεταγμένες.
- γ) Σύστημα συντεταγμένων ΕΓΣΑ '87.



ΤΟΠΟΓΡΑΦΙΚΟ ΔΙΑΓΡΑΜΜΑ

ΦΟΡΕΑΣ ΕΚΤΕΛΕΣΗΣ ΕΡΓΟΥ:
ΜΑΕΛ ΕΝΕΡΓΕΙΑΚΗ ΕΠΕ
ΚΥΝΟΥΡΙΑΣ 5, 165 61 ΓΥΦΑΔΑ ΑΙΤΤΙΚΗΣ
ΤΗΛ. 210 9634098, 9604454, 6932 628 413
ΦΑΞ 210 9604274

ΘΕΣΗ: ΤΣΟΥΜΑ ΚΟΥΖΗ
~~Α.Ε.Κ.Ε.Φ.Ε.Π.Ε.Σ.Δ.Η.Μ.Ο.Υ. ΛΕΒΑΔΕΩΝ - Ν.Ο.Μ.ΟΥ ΒΟΙΩΤΙΑΣ~~

ΠΡΑΞΗ ΧΑΡΑΚΤΗΡΙΣΜΟΥ

ΤΤΚ

ΚΛΙΜΑΚΑ 1:5.000

ΜΑΙΟΣ 2019

ΥΠΟΓΡΑΦΗ

ΣΦΡΑΓΙΔΑ

ΚΩΔ. ΚΑΤΑΣΚΕΥΑΣΤΙΚΗ ΙΚΕ
ΚΑΤΑΣΚΕΥΑΣΤΙΚΗ ΕΤΑΙΡΙΑ
Α.Α. ΠΑΠΑΝΑΣΤΑΣΙΟΥ 12, 1524 ΚΑΡΔΙΑ
Τ.Κ. 15121, ΑΡΧ. ΜΗΤΡΟΥ 1524
Τ.ΗΛ. 210 29502, 29503, 29504
Α.Φ.Μ. 9906813, 6977, 45944
E-mail: ktkconstructions@gmail.com

ΑΒΟΡΙΤΗΣ Δ. ΜΙΧΑΗΛ
ΔΙΠΛΩΜ. ΠΟΛΙΤΙΚΟΣ ΜΗΧΑΝΙΚΟΣ
ΑΡΙΣΤΟΤΕΛΕΙΟ ΠΑΝ/ΜΙΟΥ ΘΕΣΣΟΝΙΚΗΣ
ΜΕΛΟΣ Τ.Ε.Ε. ΑΡΧ. ΜΗΤΡΟΥ 1524
Τ.Κ. 15121, ΑΡΧ. ΜΗΤΡΟΥ 1524
Τ.ΗΛ. 210 29502, 29503, 29504
Α.Φ.Μ. 123722174 - Δ.Ο.Υ. Α.Α. Α.Ε.Κ.Ε.Φ.Ε.Π.Ε.Σ.Δ.Η.Μ.Ο.Υ. ΛΕΒΑΔΕΩΝ

ΕΓΚΡΙΣΗ

