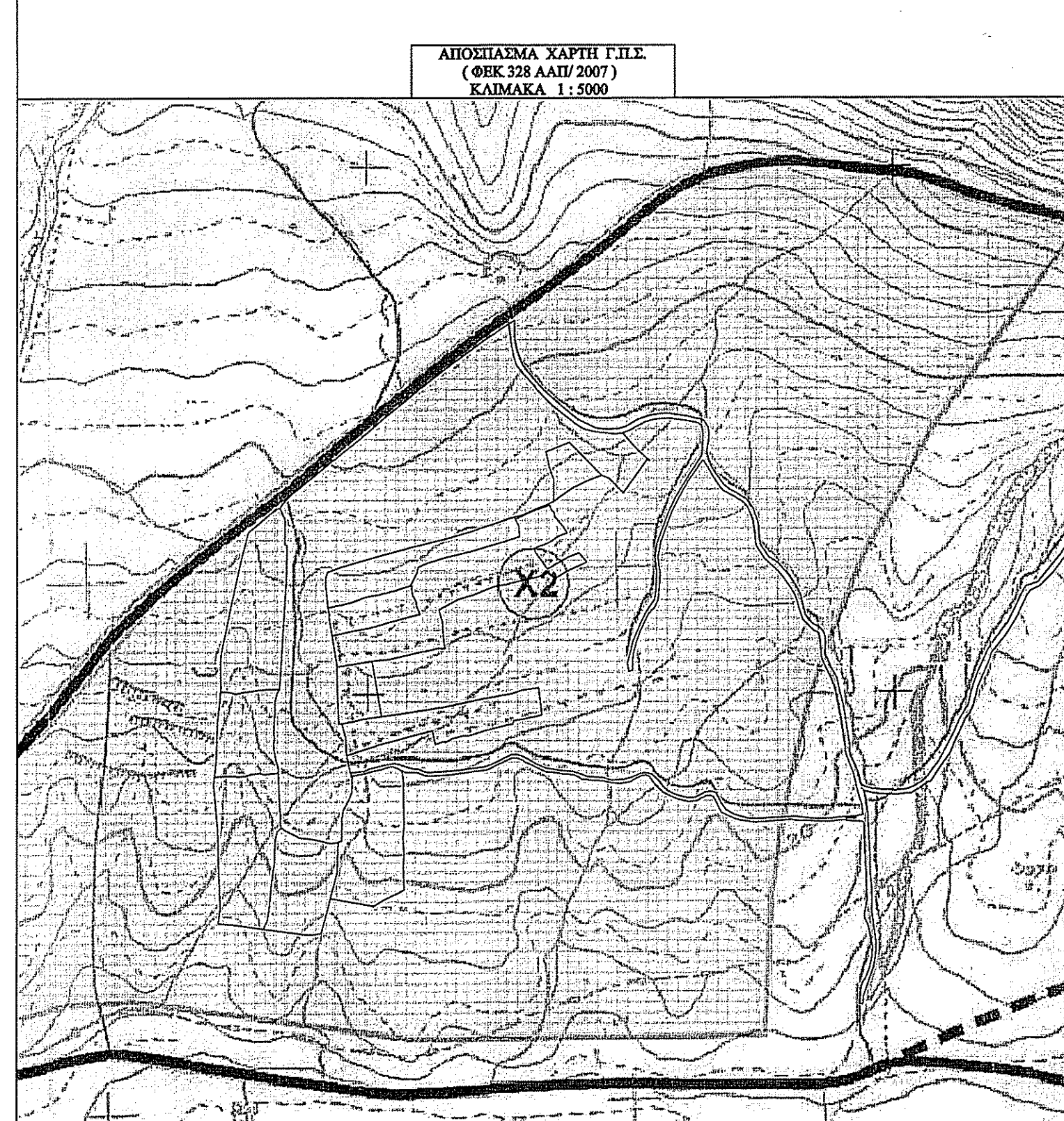
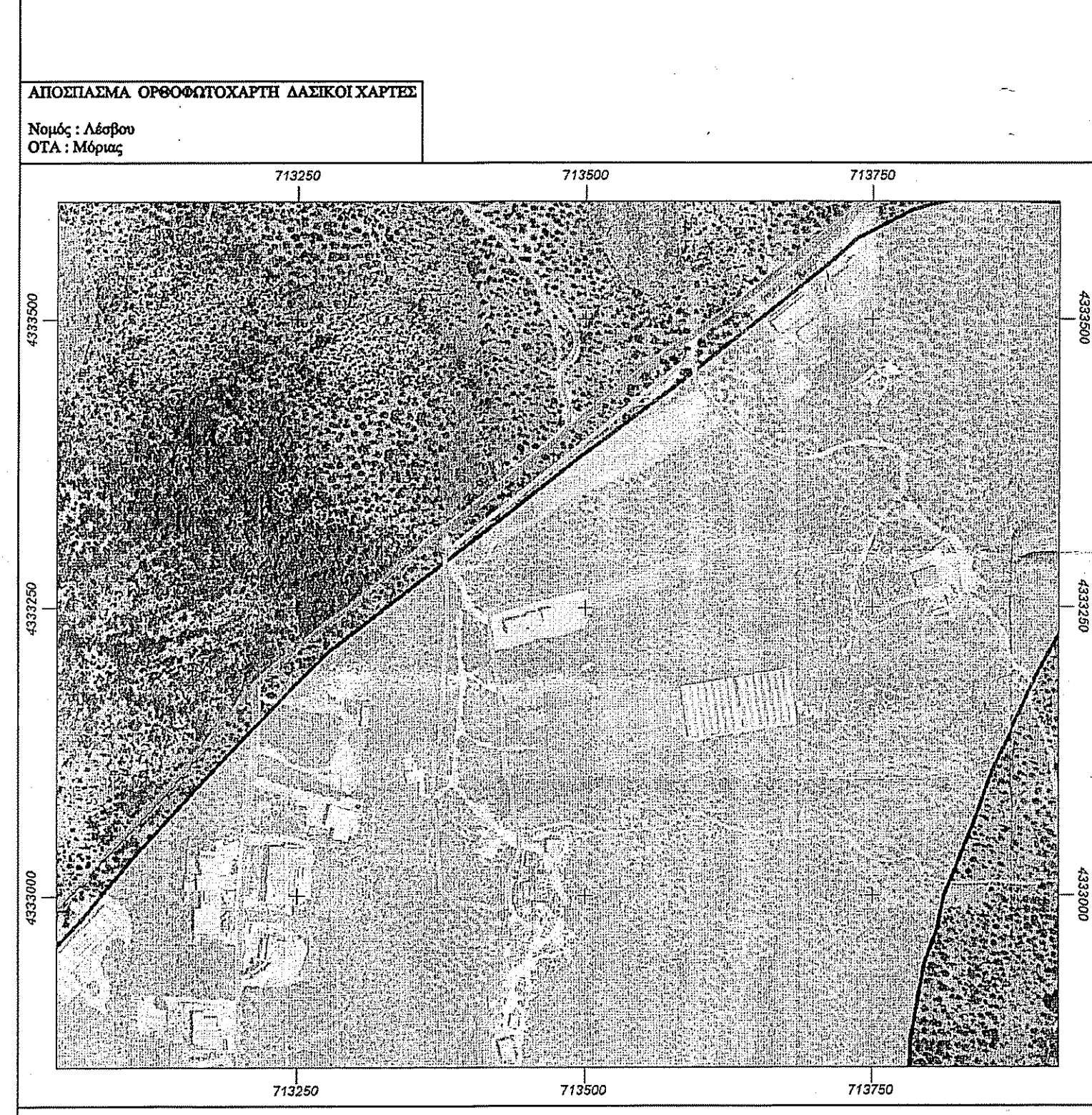


Πίνακας Συντεταγμένων Κορυφών Μείκτων
Κτίσματος σε ΕΓΣΑ '87

ΣΗΜΕΙΟ	X	Y
Α	713973.19	4333346.52
Β	713882.89	4333454.81
Γ	713684.11	4333383.68
Δ	713514.40	4333295.31



ΕΜΒΛΑΟΜΕΤΡΙΚΗ ΓΡΗΘΑΥ

Πίνακας Συντεταγμένων Κορυφών
Βασισμένος ως ΕΓΣΑ '87

ΣΗΜΕΙΟ	X	Y	ΜΙΚΡΟ
1	713787.45	4333295.31	25.35
2	71403.85	433316.95	36.47
3	71450.48	433339.24	77.80
4	71491.28	433338.89	122.30
5	71532.67	433347.46	18.54
6	71589.92	433429.29	8.11
7	71599.23	433441.43	1.03
8	71599.87	433440.03	9.82
9	71599.96	433433.29	13.82
10	71614.12	433442.57	9.71
11	71620.21	433442.56	11.96
12	71624.73	433410.46	6.41
13	71623.21	433404.61	15.25
14	71624.49	433392.12	13.68
15	71624.76	433384.94	9.64
16	71625.00	433377.69	8.36
17	71625.42	433368.00	6.09
18	71625.76	433357.88	4.48
19	71625.89	433347.78	2.85
20	71625.92	433337.69	1.22
21	71625.95	433327.60	0.58
22	71625.98	433317.51	0.00
23	71626.01	433307.42	0.58
24	71626.04	433297.33	1.22
25	71626.07	433287.24	1.86
26	71626.10	433277.15	2.49
27	71626.13	433267.06	3.13
28	71626.16	433256.97	3.77
29	71626.19	433246.88	4.41
30	71626.22	433236.79	5.04
31	71626.25	433226.70	5.68
32	71626.28	433216.61	6.32
33	71626.31	433206.52	6.96
34	71626.34	433196.43	7.60
35	71626.37	433186.34	8.24
36	71626.40	433176.25	8.88
37	71626.43	433166.16	9.52
38	71626.46	433156.07	10.16
39	71626.49	433145.98	10.80
40	71626.52	433135.89	11.44
41	71626.55	433125.80	12.08
42	71626.58	433115.71	12.72
43	71626.61	433105.62	13.36
44	71626.64	433095.53	14.00
45	71626.67	433085.44	14.64
46	71626.70	433075.35	15.28
47	71626.73	433065.26	15.92
48	71626.76	433055.17	16.56
49	71626.79	433045.08	17.20
50	71626.82	433034.99	17.84
51	71626.85	433024.90	18.48
52	71626.88	433014.81	19.12
53	71626.91	433004.72	19.76
54	71626.94	432994.63	20.40
55	71626.97	432984.54	21.04
56	71627.00	432974.45	21.68
57	71627.03	432964.36	22.32
58	71627.06	432954.27	22.96
59	71627.09	432944.18	23.60
60	71627.12	432934.09	24.24
61	71627.15	432924.00	24.88
62	71627.18	432913.91	25.52
63	71627.21	432903.82	26.16
64	71627.24	432893.73	26.80
65	71627.27	432883.64	27.44
66	71627.30	432873.55	28.08
67	71627.33	432863.46	28.72
68	71627.36	432853.37	29.36
69	71627.39	432843.28	30.00
70	71627.42	432833.19	30.64
71	71627.45	432823.10	31.28
72	71627.48	432813.01	31.92
73	71627.51	432802.92	32.56
74	71627.54	432792.83	33.20
75	71627.57	432782.74	33.84
76	71627.60	432772.65	34.48
77	71627.63	432762.56	35.12
78	71627.66	432752.47	35.76
79	71627.69	432742.38	36.40
80	71627.72	432732.29	37.04
81	71627.75	432722.20	37.68
82	71627.78	432712.11	38.32
83	71627.81	432702.02	38.96
84	71627.84	432691.93	39.60
85	71627.87	432681.84	40.24
86	71627.90	432671.75	40.88
87	71627.93	432661.66	41.52
88	71627.96	432651.57	42.16
89	71627.99	432641.48	42.80
90	71628.02	432631.39	43.44
91	71628.05	432621.30	44.08
92	71628.08	432611.21	44.72
93	71628.11	432601.12	45.36
94	71628.14	432591.03	46.00
95	71628.17	432580.94	46.64
96	71628.20	432570.85	47.28
97	71628.23	432560.76	47.92
98	71628.26	432550.67	48.56
99	71628.29	432540.58	49.20
100	71628.32	432530.49	49.84
101	71628.35	432520.40	50.48
102	71628.38	432510.31	51.12
103	71628.41	432500.22	51.76
104	71628.44	432490.13	52.40
105	71628.47	432480.04	53.04
106	71628.50	432469.95	53.68
107	71628.53	432459.86	54.32
108	71628.56	432449.77	54.96
109	71628.59	432439.68	55.60
110	71628.62	432429.59	56.24
111	71628.65	432419.50	56.88
112	71628.68	432409.41	57.52
113	71628.71	432399.32	58.16
114	71628.74	432389.23	58.80
115	71628.77	432379.14	59.44
116	71628.80	432369.05	60.08
117	71628.83	432358.96	60.72
118	71628.86	432348.87	61.36
119	71628.89	432338.78	62.00
120	71628.92	432328.69	62.64
121	71628.95	432318.60	63.28
122	71628.98	432308.51	63.92
123	71629.01	432298.42	64.56
124	71629.04	432288.33	65.20
125	71629.07	432278.24	65.84
126	71629.10	432268.15	66.48
127	71629.13	432258.06	67.12
128	71629.16	432247.97	67.76
129	71629.19	432237.88	68.40
130	71629.22	432227.79	69.04
131	71629.25	432217.70	69.68
132	71629.28	432207.61	70.32
133	71629.31	432197.52	70.96
134	71629.34	432187.43	71.60
135	71629.37	432177.34	72.24
136	71629.40	432167.25	72.88
137	71629.43	432157.16	73.52
138	71629.46	432147.07	74.16
139	71629.49	432136.98	74.80
140	71629.52	432126.89	75.44
141	71629.55	432116.80	76.08
142	71629.58	432106.71	76.72
143	71629.61	432096.62	77.36
144	71629.64	432086.53	78.00
145	71629.67	432076.44	78.64
146	71629.70	432066.35	79.28
147	71629.73	432056.26	79.92
148	71629.76	432046.17	80.56
149	71629.79	432036.08	81.20
150	71629.82	432025.99	81.84
151	71629.85	432015.90	82.48
152	71629.88	432005.81	83.12
153	71629.91	431995.72	83.76
154	71629.94	431985.63	84.40
155	71629.97	431975.54	85.04
156	71630.00	431965.45	85.68
157	71630.03	431955.36	86.32
158	71630.06	431945.27	86.96
159	71630.09	431935.18	87.60
160	71630.12	431925.09	88.24
161	71630.15	431915.00	88.88
162	71630.18	431904.91	89.52
163	71630.21	431894.82	90.16
164	71630.24	431884.73	90.80
165	71630.27	431874.64	91.44
166	71630.30	431864.55	92.08
167	71630.33	431854.46	92.72
168	71630.36	431844.37	93.36
169	71630.39	431834.28	94.00
170	71630.42	431824.19	94.64
171	71630.45	431814.10	95.28
172	71630.48	431804.01	95.92
173	71630.51	431793.92	96.56
174	71630.54	431783.83	97.20
175	71630.57	431773.74	97.84
176	71630.60	431763.65	98.48
177	71630.63	431753.56	99.12
178	71630.66	431743.47	99.76
179	71630.69	431733.38	100.40
180	71630.72	431723.29	101.04
181	71630.75	431713.20	101.68
182	71630.78	431703.11	102.32
183	71630.81	431693.02	102.96
184	71630.84	431682.93	103.60
185	71630.87	431672.84	104.24
186	71630.90	431662.75	104.88
187	71630.93	431652.66	105.52
188	71630.96	431642.57	106.16
189	71630.99	431632.48	106.80
190	71631.02	431622.39	107.44
191	71631.05	431612.30	108.08
192	71631.08	431602.21	108.72
193	71631.11	431592.12	109.36
194	71631.14	431582.03	110.00
195	71631.17	431571.94	110.64
196	71631.20	431561.85	111.28
197	71631.23	431551.76	111.92
198	71631.26	431541.67	112.56
199	71631.29	431531.58	113.20
200	71631.32	431521.49	113.84
201	71631.35	431511.40	114.48
202	71631.38	431501.31	115.12
203	71631.41	431491.22	115.76
204	71631.44	431481.13	116.40
205	71631.47	431471.04	117.04
206	71631.50	431460.95	117.68
207	71631.53	431450.86	118.32
208	71631.56	431440.77	118.96
209	71631.59	431430.68	119.60
210	71631.62	431420.59	120.24
211	71631.65	431410.50	120.88
212	71631.68	431400.41	121.52
213	71631.71	431390.32	122.16
214	71631.74	431380.23	122.80
215	71631.77	431370.14	123.44
216	71631.80	431360.05	124.08
217	71631.83	431349.96	124.72
218	71631.86	431339.87	125.36
219	71631.89	431329.78	126.00
220	71631.92	431319.69	126.64
221	71631.95	431309.60	127.28
222	71631.98	431299.51	127.92
223	71632.01	431289.42	128.56
224	71632.04	431279.33	129.20
225	71632.07	431269.24	129.84
226	71632.10	431259.15	130.48
227	71632.13	431249.06	131.12
228	71632.16	431238.97	131.76
229	71632.19	431228.88	132.40
230	71632.22	431218.79	133.04