

ΤΕΧΝΙΚΟ ΓΡΑΦΕΙΟ

ΓΙΩΡΓΟΣ Ε ΔΑΜΑΣΚΗΝΑΚΗΣ

ΑΓΡΟΝΟΜΟΣ ΤΟΠΟΓΡΑΦΟΣ ΜΗΧΑΝΙΚΟΣ ΑΠΘ

ΕΛΙΚΩΝΟΣ 61 ΗΡΑΚΛΕΙΟ Τ.Κ. 71307

2810 22 22 56 6944 20 97 95

ΒΙΟΤΕΧΝΙΚΟ ΠΑΡΚΟ ΙΕΡΑΠΕΤΡΑΣ



Έργο

ΑΠΟΤΥΠΩΣΗ ΙΔΙΟΚΤΗΣΙΩΝ

Θέση

" ΞΕΡΟΣΤΕΡΝΕΣ "
ΕΚΤΟΣ ΣΧΕΔΙΟΥ , ΕΚΤΟΣ ΖΩΝΗΣ ΙΕΡΑΠΕΤΡΑΣ

Θέμα σχεδίου

ΤΟΠΟΓΡΑΦΙΚΟ ΔΙΑΓΡΑΜΜΑ

αριθμός
σχεδίου

ΚΛΙΜΑΚΑ
1:2000

Ισοδιάσταση=1.00 m

Προβολικό σύστημα
ΕΓΣΑ 87

Χρόνος μελέτης: ΙΟΥΛΙΟΣ 2008

Υπογραφή

Σφραγίδα

ΓΙΩΡΓΟΣ Ε. ΔΑΜΑΣΚΗΝΑΚΗΣ
ΑΓΡΟΝΟΜΟΣ ΤΟΠΟΓΡΑΦΟΣ ΜΗΧ/ΚΟΣ Α.Π.Θ.
ΜΕΛΟσ Τ.Ε.Ε. ΑΡΙΘΜΟσ ΜΗΤΡΩΟΥ 70450
ΕΛΙΚΩΝΟσ 61 ΠΟΡΟσ Τ.Κ. 713 07
ΤΗΛ & FAX, 2810 222256 - ΚΙΝ. 6944 209795
Α.Φ.Μ. 031142312 -Β' Δ.Ο.Υ. ΗΡΑΚΛΕΙΟΥ

657600

3878200

3878000

3877800

3877600



ΘΕΩΡΗΘΗΚΕ

Και ακολουθεί την υπ' αριθμ. 50/2010
Απόφαση της Ε.Ε.Δ.Α. Νομού Λασιθίου
της οποίας αποτελεί αναπόσπαστο τμήμα
Αγιος Νικόλαος, 6-9-2010
Ο Γραμματέας της Επιτροπής

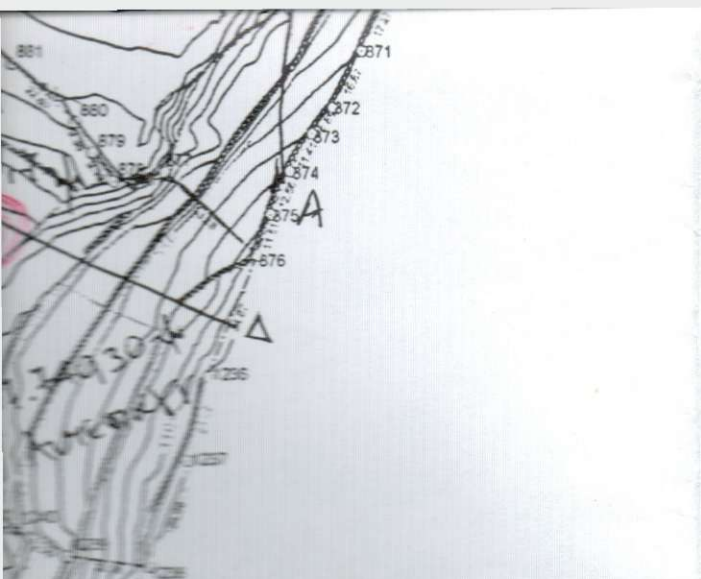
Παναγιώτα
Δασοφύλακας



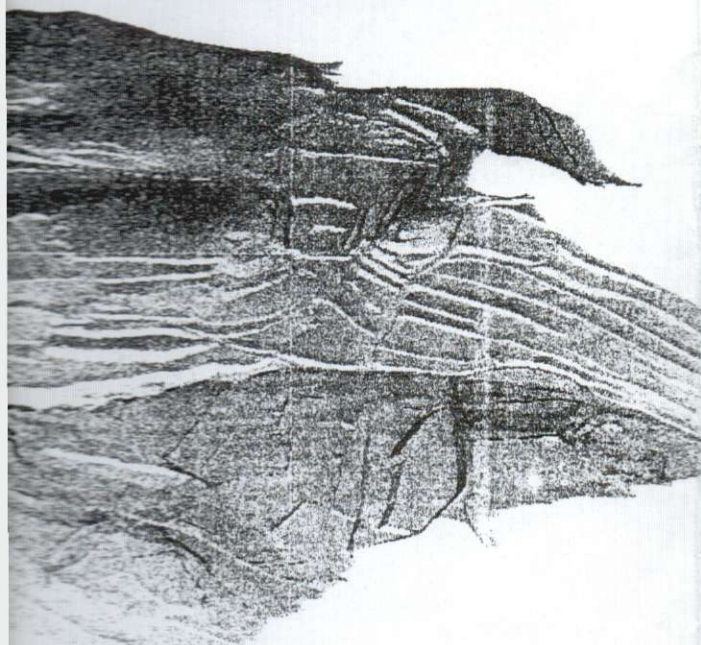
Συντεταγμένες ορίων

Σημείο	X (m)	Y (m)	Σημείο	X (m)	Y (m)	Σημείο	X (m)	Y
1	656760.468	3877385.019	2	656764.853	3877384.301	3	656787.971	387
4	656801.170	3877395.842	5	656817.522	3877394.172	6	656832.197	387
7	656851.776	3877390.258	8	656866.742	3877388.419	9	656878.788	387
10	656888.874	3877383.121	11	656893.752	3877383.389	12	656903.746	387
13	656911.342	3877384.457	14	656920.861	3877388.585	15	656941.652	387
16	656944.629	3877386.793	17	656939.580	3877371.470	18	656938.513	387
19	656940.089	3877347.694	20	656940.938	3877339.431	21	656941.919	387
22	656924.453	3877315.313	23	656914.536	3877312.760	24	656904.016	387
25	656891.489	3877311.339	26	656849.453	3877318.924	27	656836.199	387
28	656820.476	3877323.291	29	656803.800	3877324.385	30	656797.785	387
31	656799.003	3877313.328	32	656800.129	3877288.692	33	656787.598	387
34	656775.900	3877293.542	35	656766.164	3877297.102	36	656747.536	387
37	656741.932	3877310.300	38	656742.376	3877318.925	39	656753.118	387
40	656763.863	3877324.456	41	656771.784	3877328.824	42	656781.510	387
43	656789.211	3877339.156	44	656791.722	3877344.803	45	656789.785	387
46	656784.820	3877354.814	47	656773.796	3877360.068	48	656764.848	387
49	656782.271	3877366.784	50	656759.686	3877372.791	51	656759.581	387
52	656718.030	3877320.066	53	656728.250	3877318.890	54	656733.365	387
55	656736.957	3877308.334	56	656744.998	3877300.383	57	656762.422	387
58	656776.685	3877288.208	59	656787.335	3877286.073	60	656799.404	387
61	656804.319	3877274.542	62	656807.226	3877267.149	63	656809.377	387
64	656810.763	3877247.976	65	656812.453	3877237.721	66	656815.208	387
67	656817.074	3877217.195	68	656818.600	3877206.901	69	656821.520	387
70	656825.346	3877186.495	71	656828.732	3877178.856	72	656841.474	387
73	656856.523	3877168.178	74	656867.812	3877169.950	75	656875.488	387
76	656883.244	3877170.915	77	656889.962	3877170.375	78	656900.032	387
79	656881.172	3877159.817	80	656867.319	3877148.827	81	656861.460	387
82	656851.714	3877130.082	83	656844.659	3877122.853	84	656826.460	387
85	656814.419	3877095.783	86	656807.436	3877102.461	87	656792.300	387
88	656776.595	3877136.249	89	656764.845	3877153.632	90	656756.646	387
91	656725.663	3877204.025	92	656705.090	3877232.115	93	656705.977	387
94	656740.201	3877277.042	95	656711.597	3877285.718	96	656714.500	387
97	656715.074	3877303.963	99	656769.896	3876975.177	100	656776.891	387
101	656781.219	3876990.281	102	656786.001	3876998.004	103	656790.067	387
104	656796.976	3877012.471	105	656802.207	3877020.795	106	656805.786	387
107	656806.937	3877039.412	108	656807.819	3877052.710	109	656807.893	387
110	656810.450	3877078.336	111	656812.157	3877082.720	112	656816.952	387
113	656823.853	3877098.941	114	656829.421	3877104.924	115	656838.489	387
116	656847.193	3877119.847	117	656854.353	3877127.231	118	656864.074	387
119	656869.863	3877146.022	120	656876.032	3877150.809	121	656883.631	387
122	656890.682	3877160.058	123	656903.466	3877166.236	124	656915.529	387
125	656912.592	3877164.086	126	656899.378	3877153.411	127	656892.698	387
128	656882.986	3877135.166	129	656867.543	3877117.689	130	656857.421	387
131	656852.944	3877095.752	132	656848.866	3877089.109	133	656845.274	387
134	656842.262	3877074.525	135	656839.426	3877066.886	136	656836.386	387
137	656836.916	3877049.132	138	656836.259	3877042.427	139	656835.854	387
140	656835.078	3877019.730	141	656833.296	3877006.730	142	656833.274	387
143	656831.238	3876993.985	144	656831.104	3876980.599	145	656829.888	387
146	656828.019	3876965.407	147	656826.909	3876955.178	148	656826.151	387
149	656820.646	3876947.047	150	656814.907	3876940.848	151	656798.369	387
152	656788.305	3876953.705	153	656781.186	3876959.555	154	656773.195	387
155	657037.620	3877687.295	156	657052.966	3877678.336	157	657064.623	387
158	657062.791	3877668.213	159	657065.426	3877652.320	160	657067.034	387
161	657072.528	3877637.855	162	657074.701	3877630.897	163	657076.539	387
164	657077.167	3877585.135	165	657070.985	3877580.984	166	657053.777	387
167	657032.762	3877557.292	168	657028.199	3877552.876	169	657026.256	387
170	657025.706	3877563.972	171	657028.147	3877576.510	172	657028.033	387
173	657026.072	3877602.103	174	657027.395	3877616.046	175	657030.477	387
176	657031.037	3877637.661	177	657034.047	3877651.059	178	657036.173	387
179	657034.012	3877665.976	180	657034.283	3877679.658	181	657032.942	387
182	657086.457	3877662.143	183	657102.106	3877657.531	184	657101.947	387
185	657100.386	3877623.978	186	657101.780	3877596.919	187	657103.713	387
188	657106.637	3877565.540	189	657098.148	3877570.892	190	657086.117	387
191	656915.612	3877540.460	192	656937.489	3877539.418	193	656951.566	387
194	656962.873	3877540.220	195	656976.739	3877540.521	196	656985.397	387
201	657022.131	3877541.923	202	657029.392	3877542.848	203	657054.045	387
204	657053.237	3877537.394	205	657053.978	3877526.735	206	657055.705	387
207	657058.052	3877502.544	208	657063.626	3877489.865	209	657061.841	387
210	657057.519	3877480.213	211	657052.930	3877473.658	212	657047.816	387
213	657041.114	3877453.902	214	657035.015	3877442.922	215	657031.360	387
216	657026.701	3877434.026	217	657021.412	3877426.914	218	657013.861	387
219	656958.371	3877442.455	220	656940.841	3877451.321	221	656929.310	387
222	656929.402	3877472.734	223	656927.286	3877487.892	224	656925.544	387
225	656924.429	3877513.098	226	656924.776	3877518.008	227	656922.607	387
228	657106.041	3877541.440	229	657114.194	3877539.264	230	657124.868	387
231	657125.447	3877521.952	232	657123.891	3877511.110	233	657122.641	387
234	657121.375	3877497.286	235	657119.110	3877482.423	236	657117.370	387
237	657114.078	3877453.537	238	657090.388	3877461.003	239	657081.165	387
240	657062.626	3877469.303	241	656931.951	3877437.094	242	656937.246	387
243	656763.344	3877394.781	244	656768.655	3877405.989	245	656774.924	387
246	656780.943	3877427.575	247	656787.334	3877440.571	248	656793.118	387

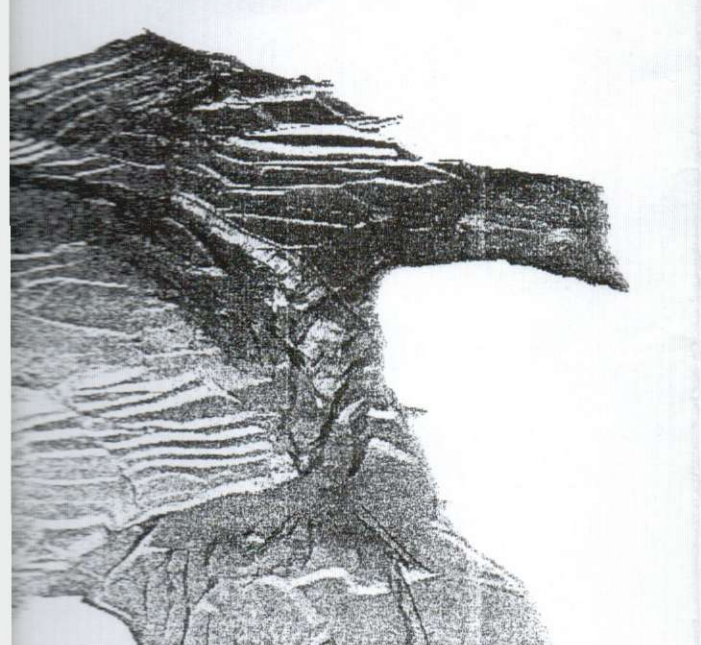




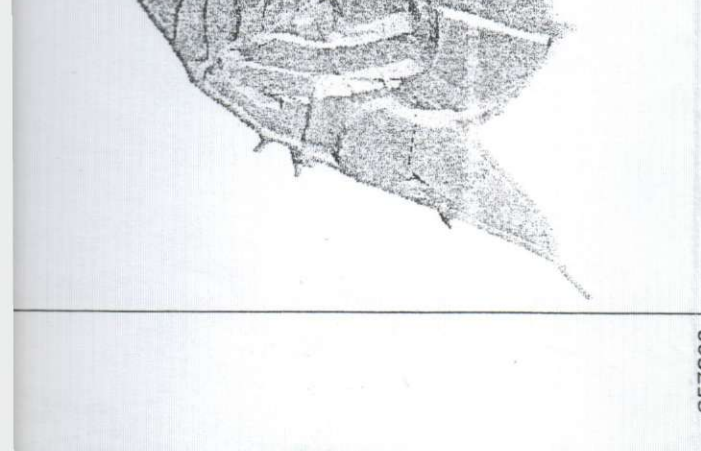
3877400



3877200



3877000



3876800

657600

257	657129.851	3877445.712	258	657141.015	3877441.819	259	657157.703	3877441.819
260	657154.639	3877432.535	261	657154.970	3877413.488	262	657153.743	3877441.819
263	657152.461	3877398.387	264	657153.854	3877387.879	265	657149.307	3877441.819
266	657149.956	3877363.770	267	657147.672	3877354.172	268	657144.738	3877441.819
269	657140.723	3877337.670	270	657135.386	3877329.505	271	657129.078	3877441.819
272	657123.944	3877310.930	273	657113.643	3877300.508	274	657107.554	3877441.819
275	657103.015	3877284.729	276	657097.399	3877251.312	277	657093.702	3877441.819
278	657089.346	3877310.848	279	657083.313	3877321.109	280	657074.438	3877441.819
281	657067.893	3877347.854	282	657066.165	3877356.886	283	657060.002	3877441.819
286	657028.043	3877340.792	287	657021.336	3877340.770	288	657020.963	3877441.819
289	657018.791	3877359.669	290	657019.317	3877372.163	291	657016.067	3877441.819
292	657021.857	3877391.349	293	657028.532	3877395.996	294	657029.532	3877441.819
295	657020.634	3877405.463	296	657018.314	3877338.462	297	656979.608	3877441.819
298	656961.730	3877325.012	299	656962.046	3877307.282	300	656973.013	3877441.819
301	656974.091	3877282.461	302	656966.957	3877282.009	303	656930.341	3877441.819
304	656923.350	3877285.411	305	656919.259	3877285.896	306	656921.953	3877441.819
307	656974.874	3877274.301	308	656977.275	3877267.271	309	656977.990	3877441.819
310	656969.203	3877252.641	311	656943.581	3877252.977	312	656936.180	3877441.819
313	656929.051	3877256.939	314	656923.957	3877255.867	315	656911.007	3877441.819
316	656918.753	3877282.758	317	656982.558	3877251.054	318	656979.516	3877441.819
320	656959.867	3877213.886	321	656955.859	3877209.984	322	656950.753	3877441.819
323	656941.255	3877210.142	324	656929.810	3877209.386	325	656919.046	3877441.819
326	656912.624	3877213.906	327	656895.757	3877223.556	328	656905.823	3877441.819
329	656950.654	3877200.212	330	656948.019	3877197.139	331	656929.000	3877441.819
332	656923.266	3877180.547	333	656918.300	3877172.160	334	656909.034	3877441.819
335	656880.715	3877175.281	336	656858.030	3877173.813	337	656873.213	3877441.819
338	656877.485	3877183.408	340	656885.034	3877201.499	341	656888.792	3877441.819
342	656852.715	3877174.617	343	656861.950	3877189.449	344	656863.525	3877441.819
345	656865.130	3877203.490	346	656871.316	3877226.169	347	656876.580	3877441.819
348	656880.885	3877257.892	349	656883.914	3877277.428	350	656889.074	3877441.819
351	656842.936	3877178.967	352	656832.512	3877183.201	353	656826.026	3877441.819
354	656821.636	3877217.737	355	656816.840	3877238.859	356	656813.728	3877441.819
357	656809.241	3877276.720	358	656802.185	3877548.442	359	656825.763	3877441.819
360	656815.018	3877516.155	361	656805.463	3877489.270	362	656795.637	3877441.819
363	656785.835	3877447.334	364	656773.439	3877422.775	365	656760.519	3877441.819
366	656756.574	3877386.172	367	656752.384	3877376.885	368	656757.577	3877441.819
369	656763.308	3877359.056	370	656771.444	3877354.956	371	656785.049	3877441.819
372	656766.238	3877344.821	373	656758.062	3877343.809	374	656735.108	3877441.819
375	656727.319	3877353.183	376	656715.470	3877362.093	377	656707.489	3877441.819
378	656687.012	3877391.606	379	656687.582	3877420.983	380	656686.238	3877441.819
381	656688.174	3877466.311	382	656693.816	3877484.244	383	656693.657	3877441.819
384	656700.264	3877522.819	385	656705.914	3877563.874	386	656740.217	3877441.819
387	656757.987	3877532.164	388	656783.401	3877526.424	389	656797.499	3877441.819
390	656659.839	3877411.169	391	656662.326	3877415.056	392	656663.088	3877441.819
393	656657.394	3877439.217	394	656655.465	3877449.305	395	656655.902	3877441.819
396	656668.684	3877475.809	397	656673.658	3877488.729	398	656676.554	3877441.819
399	656681.590	3877524.361	400	656682.521	3877540.251	401	656686.849	3877441.819
402	656697.674	3877558.468	403	656596.365	3877442.332	404	656599.700	3877441.819
405	656607.208	3877460.782	406	656615.766	3877475.947	407	656619.687	3877441.819
408	656634.557	3877473.588	409	656655.588	3877458.118	410	656662.357	3877441.819
411	656617.588	3877378.752	412	656593.852	3877383.187	413	656599.914	3877441.819
414	656580.617	3877380.353	415	656584.649	3877390.036	416	656568.877	3877441.819
417	656553.410	3877394.285	418	656535.339	3877396.390	419	656508.330	3877441.819
420	656498.548	3877404.380	421	656492.438	3877406.966	422	656457.014	3877441.819
423	656453.735	3877408.800	424	656441.444	3877411.510	425	656435.190	3877441.819
426	656432.946	3877434.579	427	656432.671	3877451.737	428	656431.979	3877441.819
429	656443.569	3877472.068	430	656457.330	3877469.841	431	656500.758	3877441.819
432	656521.424	3877459.784	433	656530.756	3877459.994	434	656544.328	3877441.819
435	656561.495	3877457.987	436	656361.618	3877530.197	437	656447.666	3877441.819
438	656443.962	3877499.771	439	656424.876	3877422.025	440	656406.150	3877441.819
441	656391.505	3877435.312	442	656384.350	3877445.973	443	656380.029	3877441.819
444	656375.728	3877475.341	445	656370.825	3877492.165	446	656365.729	3877441.819
447	656360.760	3877516.539	448	656368.458	3877551.129	449	656373.302	3877441.819
450	656377.222	3877596.220	451	656380.113	3877616.231	452	656389.391	3877441.819
453	656401.086	3877663.495	454	656471.257	3877625.229	455	656489.802	3877441.819
456	656506.929	3877613.509	457	656519.994	3877610.458	458	656528.583	3877441.819
459	656530.830	3877602.547	460	656535.841	3877597.012	461	656544.333	3877441.819
462	656550.997	3877584.091	463	656554.730	3877575.582	464	656551.717	3877441.819
465	656547.054	3877530.369	466	656520.614	3877534.398	467	656491.462	3877441.819
468	656477.051	3877536.774	469	656461.814	3877525.694	470	656407.472	3877441.819
471	656424.445	3877690.761	472	656449.159	3877714.469	473	656454.756	3877441.819
474	656463.343	3877754.139	475	656546.045	3877698.282	476	656541.997	3877441.819
477	656527.154	3877670.144	478	656514.620	3877648.743	479	656498.381	3877441.819
480	656469.833	3877778.014	481	656472.372	3877789.751	482	656473.116	3877441.819
483	656476.450	3877814.087	484	656483.461	3877827.420	485	656487.446	3877441.819
486	656497.336	3877839.665	487	656507.453	3877845.783	488	656515.930	3877441.819
489	656520.210	3877856.073	490	656532.036	3877858.009	491	656544.554	3877441.819
492	656550.988	3877869.214	493	656636.624	3877808.129	494	656631.882	3877441.819
495	656621.414	3877789.082	496	656613.773	3877777.620	497	656595.036	3877441.819
498	656587.609	3877746.938	499	656571.362	3877734.767	500	656562.711	3877441.819
501	656701.023	3877832.827	502	656743.900	3877813.370	503	656790.833	3877441.819
504	656789.208	3877776.702	506	656771.458	3877758.226	507	656763.627	3877441.819
508	656757.221	3877742.998	509	656747.064	3877732.868	510	656741.953	3877441.819
511	656736.965	3877726.829	512	656730.039	3877725.766	513	656725.184	3877441.819
514	656713.340	3877729.020	515	656701.195	3877731.641	516	656685.398	3877441.819
517	656683.112	3877735.911	518	656681.				

